

Replacement of Dennis Avenue Bridge No. M-0194 over Sligo Creek Tributary (Wheaton Branch)

WELCOME **VIRTUAL PUBLIC HEARING** **April 3, 2024**



North Elevation (looking downstream)



Wheaton Branch (upstream looking north)

We will begin shortly. The Public Hearing will be recorded.

Replacement of Dennis Avenue Bridge No. M-0194 over Sligo Creek Tributary (Wheaton Branch)

WELCOME **VIRTUAL PUBLIC HEARING** **April 3, 2024**



North Elevation (looking downstream)



Wheaton Branch (upstream looking north)

The Public Hearing is being recorded

PUBLIC HEARING FORMAT

- ◆ Cameras and microphones have been turned off to reduce the bandwidth of the meeting
- ◆ Verbal Testimony
 - ❖ Those who wish to testify will be asked to “raise hand” and unmuted when it is their turn to speak
 - ❖ “Raise hand” icon is located at the bottom of the screen under “Reactions” button
- ◆ Written Testimony
 - ❖ May be submitted and will be considered with the same weight as oral testimony
- ◆ Questions and Answers will follow the Testimony Portion of the Hearing
 - ❖ “Raise hand” to ask a question or type it into the Chat Box by clicking “Chat” button on the bottom of screen

PURPOSE OF PUBLIC HEARING

- ◆ Hearing held pursuant to Section 49-53 of Montgomery County Code
- ◆ Obtain testimony and comments regarding the potential project
- ◆ Testimony/comments should be focused entirely on the Replacement of Dennis Avenue Bridge over Sligo Creek Tributary (Wheaton Branch) project
- ◆ All interested persons are entitled to be heard at this hearing; however, the testimony portion of this hearing is not a forum for dialogue, questions and answers, or cross-examination

PUBLIC HEARING RECORD

The Public Hearing Record will remain open for **four weeks** after the hearing to allow any person an opportunity to have their comments included.

Official Closing Date for Testimony and Comments

Wednesday, May 1, 2024

At 7:00 PM

Submissions can be made via:

E-mail: Greg.Hwang@montgomerycountymd.gov

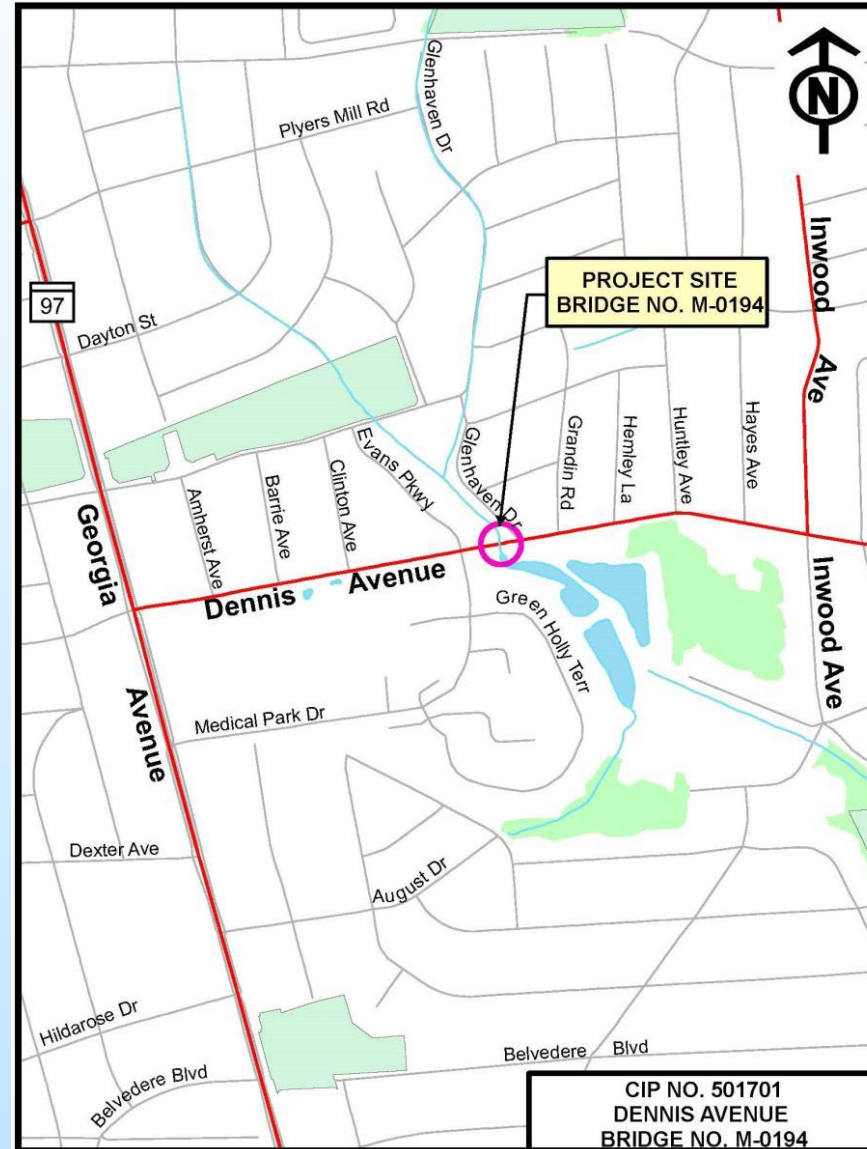
OR

Online comment form at:

<https://forms.office.com/g/uLp8ZvLeLm> in English

<https://forms.office.com/g/GkuPWZk0xJ> in Spanish

Replacement of Dennis Avenue Bridge No. M-0194 over Sligo Creek Tributary (Wheaton Branch)



PROJECT LOCATION

Display A

Replacement of Dennis Avenue Bridge No. M-0194 over Sligo Creek Tributary (Wheaton Branch)



**North Elevation
(looking downstream)**



**South Elevation
(looking upstream)**



**Prestressed Concrete Voids Slab Beams
Spalls, Cracks and Exposed Reinforcement**

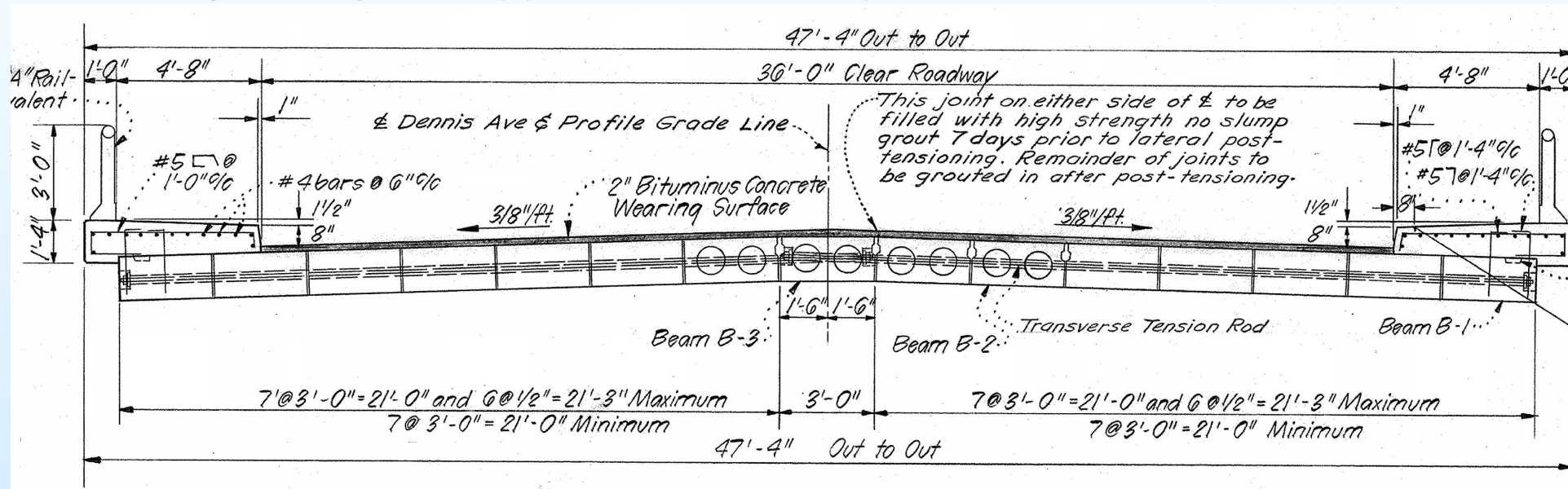
- ◆ Constructed in 1961 (63 years old)
- ◆ Single Span bridge with prestressed concrete voided slab beams
- ◆ 29'-0" Clear span between abutment faces
- ◆ Cantilever concrete abutments and wingwalls on concrete piles

EXISTING BRIDGE

Display B-1

Replacement of Dennis Avenue Bridge No. M-0194 over Sligo Creek Tributary (Wheaton Branch)

Existing Bridge – Typical Roadway Section



- ◆ Through Lane (two lanes) : **18'-0"**
- ◆ Clear Roadway Width : **36'-0"**
- ◆ Sidewalk (both sides) : **4'-8"**
- ◆ Barrier (both sides) : **1'-0"**
- ◆ Out-to-out Structure : **47'-4"**

EXISTING BRIDGE

Display B-2

Replacement of Dennis Avenue Bridge No. M-0194 over Sligo Creek Tributary (Wheaton Branch)

Existing Dennis Avenue Bridge and Wheaton Branch – Bird’s Eye View Looking North

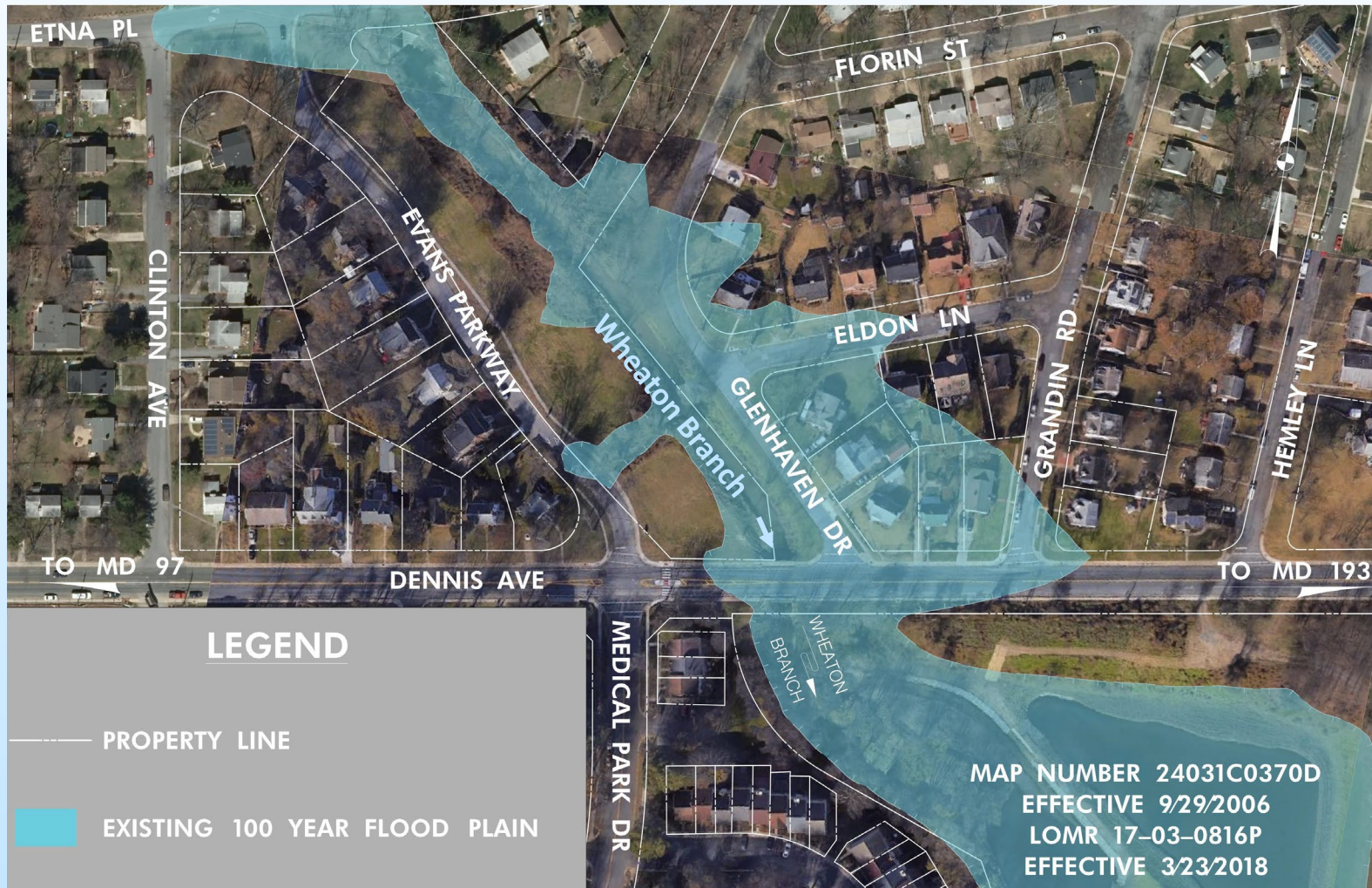


EXISTING BRIDGE

Display B-3

Replacement of Dennis Avenue Bridge No. M-0194 over Sligo Creek Tributary (Wheaton Branch)

Existing 100-Year Floodplain



2010 Storm Event

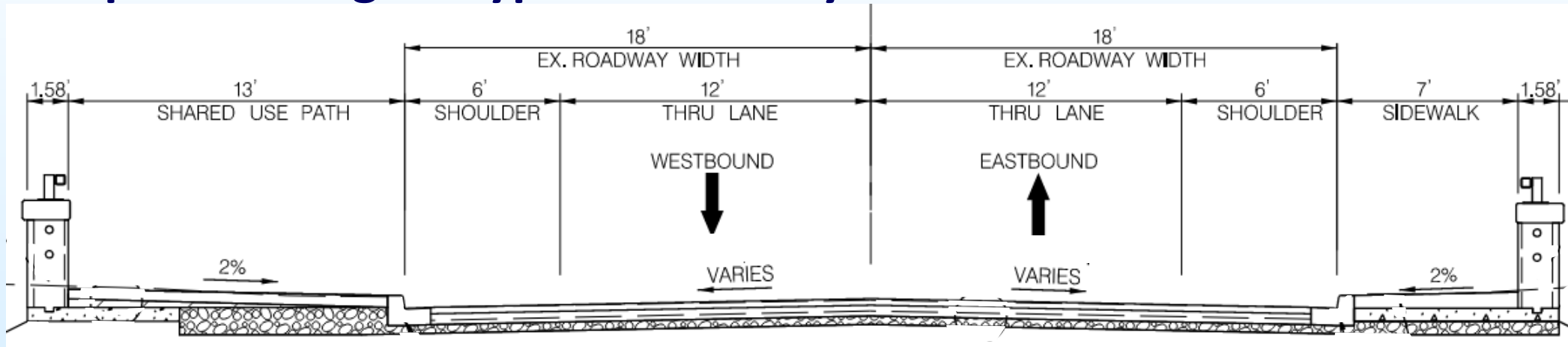


EXISTING BRIDGE

Display B-4

Replacement of Dennis Avenue Bridge No. M-0194 over Sligo Creek Tributary (Wheaton Branch)

Proposed Bridge – Typical Roadway Section



- ◆ Through Lane (two lanes) : 12'-0"
- ◆ Shoulder (both directions) : 6'-0"
- ◆ Clear Roadway : 36'-0"
- ◆ Sidewalk (south side) : 7'-0"
- ◆ Shared Use Path (north side) : 13'-0"
- ◆ Barrier (both sides) : 1'-7"
- ◆ Out-to-out Structure : 59'-2"

PROPOSED BRIDGE

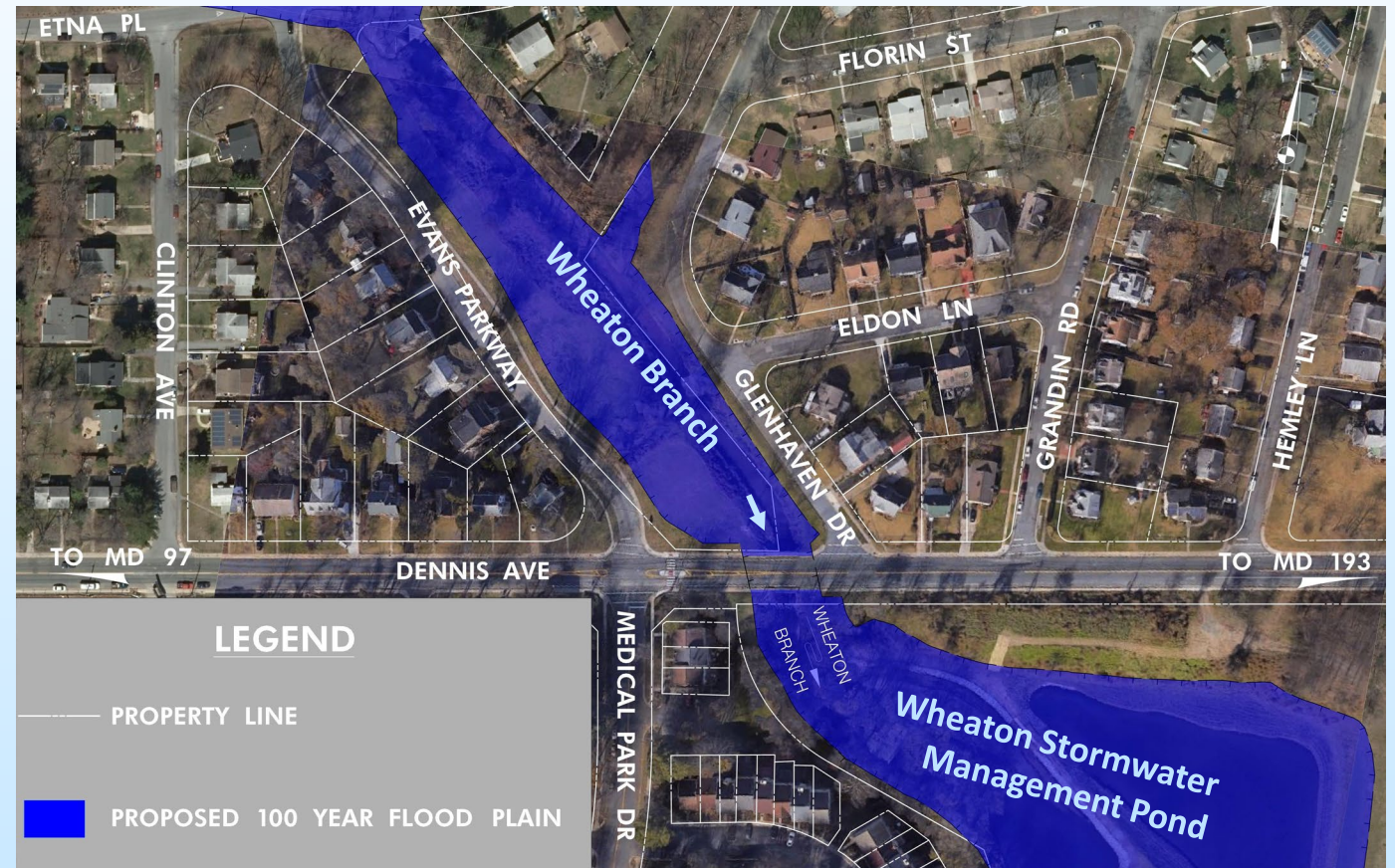
Display C-2

Replacement of Dennis Avenue Bridge No. M-0194 over Sligo Creek Tributary (Wheaton Branch)

Sister Project by DEP - Wheaton Branch Flood Mitigation (CIP Project No. P801710)

- ◆ Be constructed after the bridge replacement project
- ◆ Enlarge Wheaton Branch upstream and downstream of Bridge M-0194
- ◆ Remove sediment in Wheaton Stormwater Management Pond
- ◆ Modify the release structure of the Wheaton Stormwater Management Pond
- ◆ Combined with the bridge replacement project, reduce the floodplain footprint.

Proposed 100-Year Floodplain



PROPOSED BRIDGE
Display C-3

Replacement of Dennis Avenue Bridge No. M-0194 over Sligo Creek Tributary (Wheaton Branch)

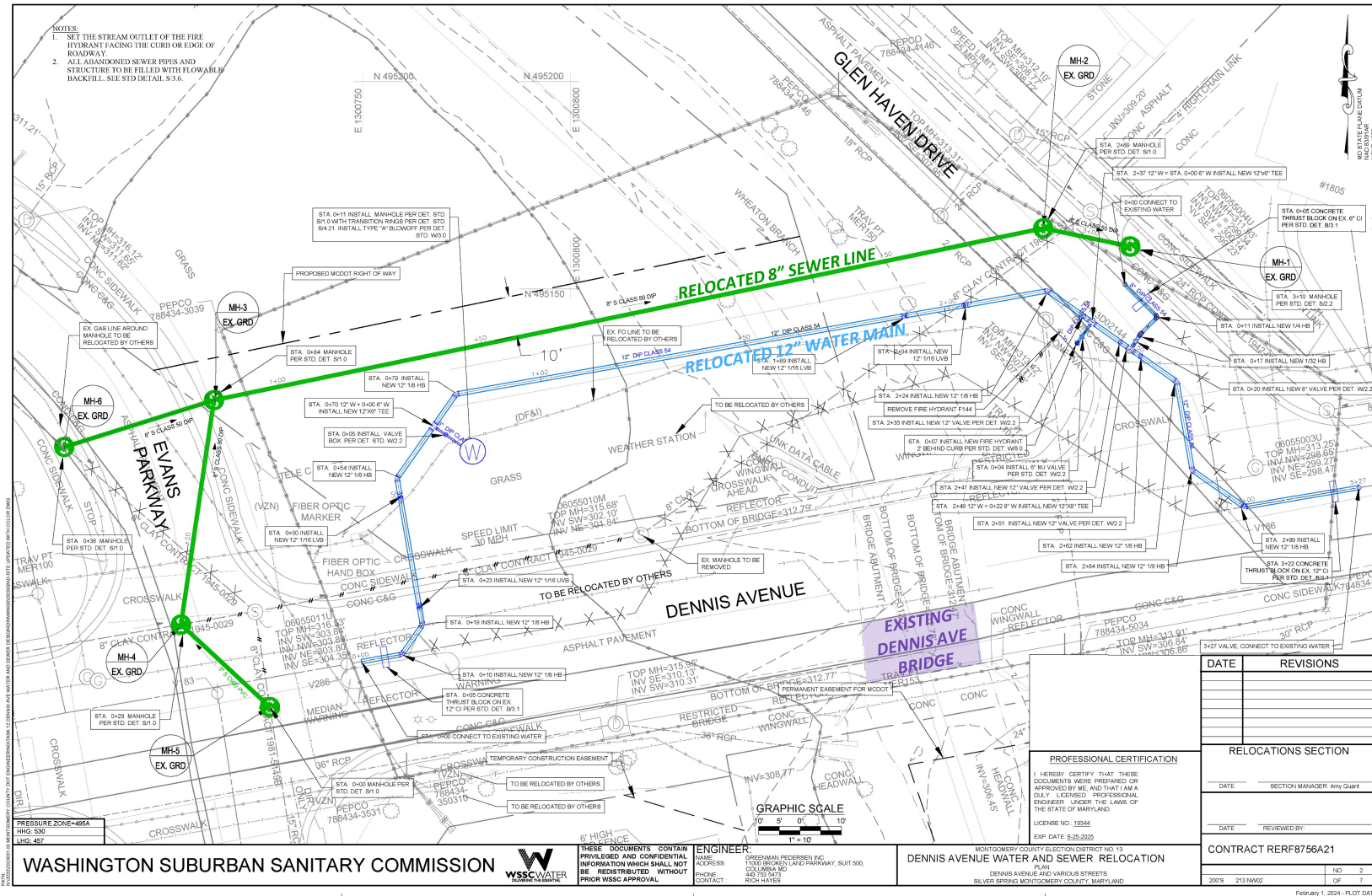
Proposed Dennis Avenue Bridge and Wheaton Branch – Bird’s Eye View Looking North



PROPOSED BRIDGE

Display C-4

Replacement of Dennis Avenue Bridge No. M-0194 over Sligo Creek Tributary (Wheaton Branch)



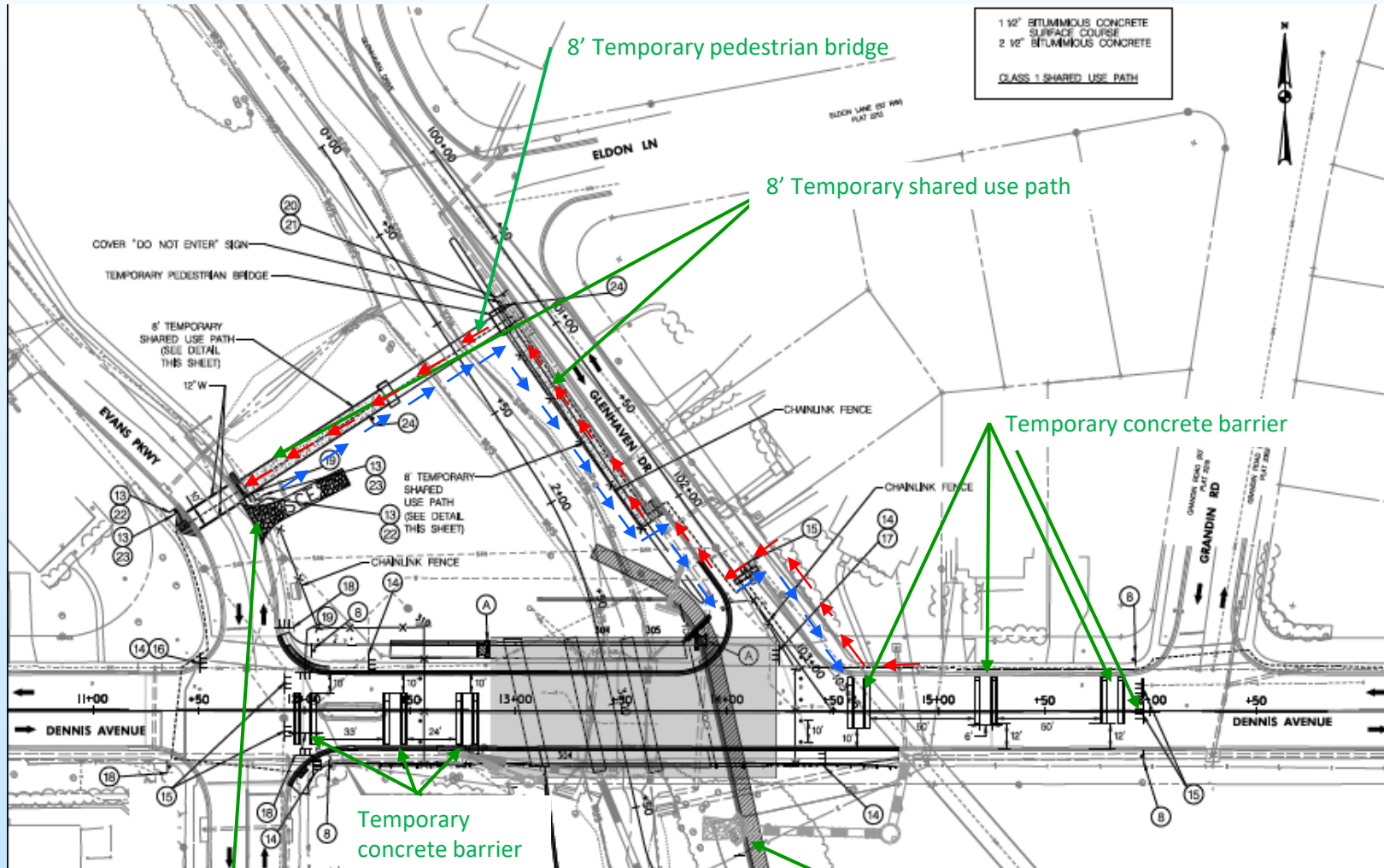
Utility Relocations

- ◆ Pepco, Verizon, Washington Gas, and Fiber Optics relocations will be implemented by utility owners prior to the project
- ◆ WSSC water main and sewer line relocations will be implemented by the Contractor for the project before existing bridge demolition

UTILITY RELOCATIONS

Display C-5

Replacement of Dennis Avenue Bridge No. M-0194 over Sligo Creek Tributary (Wheaton Branch)

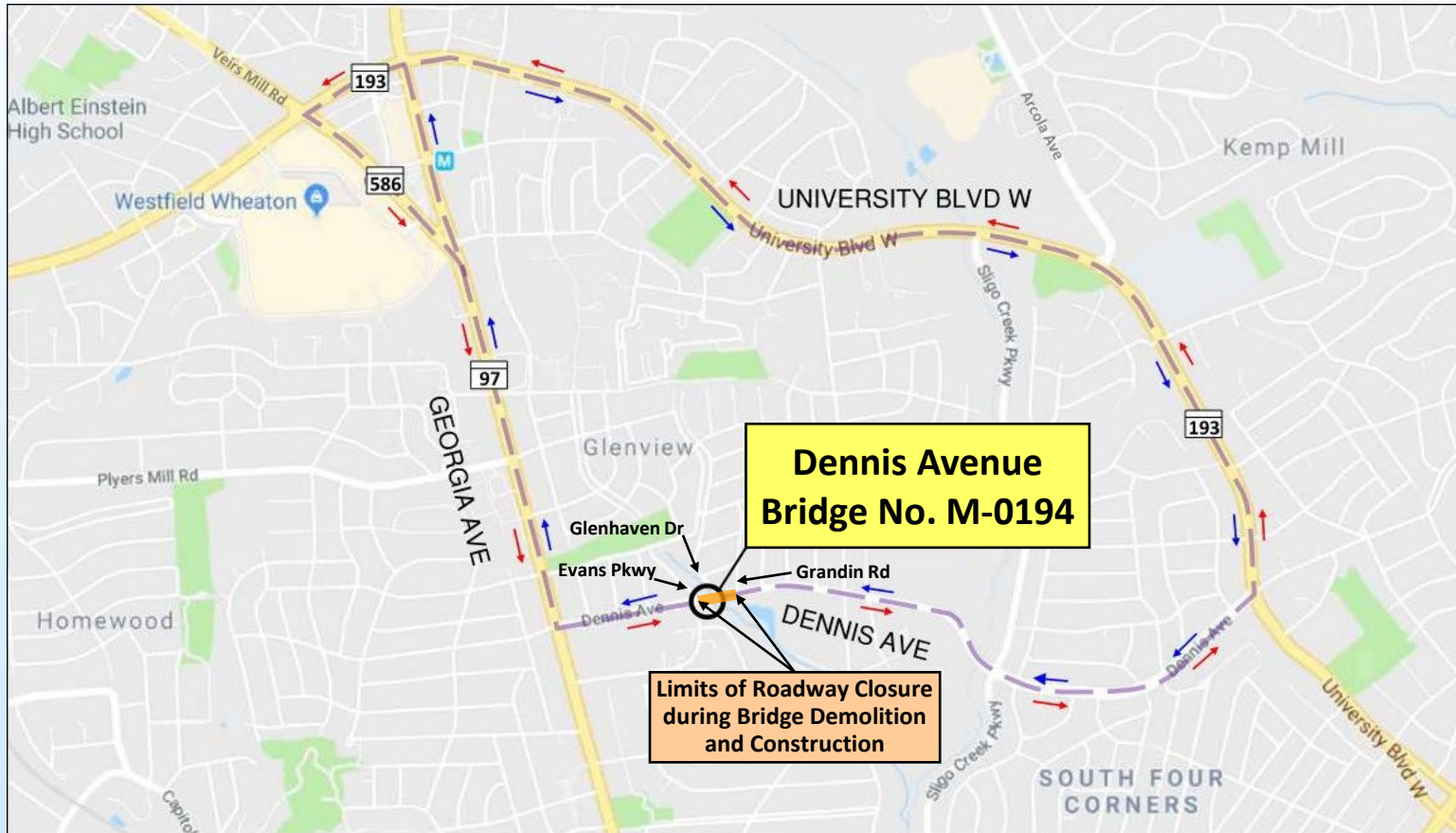


Pedestrian & Bicycle Traffic Detour

- ◆ 8' wide temporary pedestrian bridge and shared use path will be provided north of the bridge before roadway closure for bridge demolition and construction
- ◆ Provide safe pedestrian and bicyclist access during construction
- ◆ Minimize Impact to Residential Properties

***MAINTENANCE OF TRAFFIC
DURING CONSTRUCTION***

Replacement of Dennis Avenue Bridge No. M-0194 over Sligo Creek Tributary (Wheaton Branch)



Replacement of Dennis Avenue Bridge No. M-0194

5-Mile Vehicular Traffic Detour

- Dennis Ave EB – University Blvd (MD 193) WB – Veirs Mill Rd (MD 586) SB – Georgia Ave (MD 97) SB – Dennis Ave EB
- Dennis Ave WB – Georgia Ave (MD 97) NB – University Blvd (MD 193) EB – Dennis Ave WB

Vehicular Traffic Detour

- ◆ Dennis Avenue from east of Evans Parkway to west of Grandin Road, including the intersection with Glenhaven Drive, will be closed to traffic due to bridge demolition and construction after WSSC water main and sewer line relocations are completed

MAINTENANCE OF TRAFFIC
DURING CONSTRUCTION

Display D-2

Minimize Community Disruption

- ◆ Bridge and roadway closure for bridge demolition and construction will begin after schools are closed for 2025 summer break.
- ◆ Detour vehicular traffic to shorten construction duration.
- ◆ Maintain pedestrian and bicycle access with temporary pedestrian bridge and shared use path.
- ◆ Coordination with Police, Fire and Rescue, and Public Schools for roadway closure.
- ◆ Work hours will follow County noise ordinances.
- ◆ Minimal easements and right-of-way needs.
- ◆ Proper Erosion and Sediment Controls implemented to reduce impacts of storms during construction.
- ◆ Work with WSSC to minimize the service interruption to relocate water main and sewer line.

MAINTENANCE OF TRAFFIC
DURING CONSTRUCTION

Display D-3

Replacement of Dennis Avenue Bridge No. M-0194 over Sligo Creek Tributary (Wheaton Branch)



- ◆ **Estimated Project Total Cost**
 - ❖ \$10.87M including costs for bridge replacement, land acquisition, utility relocations, and water main and sewer line relocations
- ◆ **Project Funding**
 - ❖ Federal Funds \$6.51M
 - ❖ County Funds \$4.06M
 - ❖ WSSC Funds \$300K (50% of water main and sewer line relocation costs)
- ◆ **Project Schedule**
 - ❖ Final Design Complete Summer 2024
 - ❖ Advertise for Construction Fall 2024
 - ❖ Begin Construction Spring 2025
 - ❖ End Construction Fall 2025
- ◆ **Front Footage Benefit Assessments**
 - ❖ Pursuant to Section 49-52 of Montgomery County Code
 - ❖ No properties to be assessed for front footage benefit

PROJECT COSTS, FUNDING, SCHEDULE AND ASSESSMENTS

Display E

PUBLIC RECORD EXHIBITS, AND PROJECT RELATED DATA AND FILE

- ◆ Exhibits included in the Public Record binder
 1. The approved FY23-28 and recommended FY25-30 Project Description Forms (PDF) for Capital Improvement Program (CIP) No. P501701, Dennis Avenue Bridge No. M-0194
 2. The latest version of Design Plans
 3. The 2023 Biennial Bridge Inspection Report
 4. Washington Times newspaper, online advertisement proof, and Montgomery County governmental press release
 5. Written Testimony provided prior to and after this Public Hearing
 6. List of Attendees, to be added following this Public Hearing
 7. Hearing Transcript, to be added following this Public Hearing
- ◆ Project related data and file:
 - ❖ Available on the project webpage
<https://www.montgomerycountymd.gov/dot-dte/projects/dennisave/Index.html>
 - ❖ Available to the public until the record for this Public Hearing is officially closed

PUBLIC TESTIMONY

- ◆ Cameras and microphones have been turned off to reduce the bandwidth of the meeting
- ◆ Verbal Testimony
 - ❖ Those who wish to testify will be asked to “raise hand” by clicking “Reactions” and then “raise hand” on the icon bar at the bottom of your screen. If you dialed in by telephone, press *9 to raise your hand. You will be called on in the order their hands are raised
 - ❖ You will be unmuted when it is their turn to speak
 - ❖ **Once given speaking rights, please clearly provide your name and address for the record prior to beginning your testimony**
- ◆ Written Testimony
 - ❖ Will be considered with the same weight as oral testimony and can be submitted via
 - Email to Greg.Hwang@montgomerycountymd.gov
 - Online comment form

QUESTION-AND-ANSWER SESSION

- ◆ Cameras and microphones have been turned off to reduce the bandwidth of the meeting
- ◆ To ask a question
 - ❖ Click on the status icon on the top menu bar that looks like a person with their hand raised or;
 - ❖ Type your question into the chat box on the bottom right corner of the screen

THANK YOU FOR ATTENDING

The Public Hearing Record will remain open for **four weeks** after the hearing to allow any person an opportunity to have their comments included.

Official Closing Date for Testimony and Comments

Wednesday, May 1, 2024

At 7:00 PM

Submissions can be made via:

E-mail: Greg.Hwang@montgomerycountymd.gov

OR

Online comment form at:

<https://forms.office.com/g/uLp8ZvLeLm> in English

<https://forms.office.com/g/GkuPWZk0xJ> in Spanish