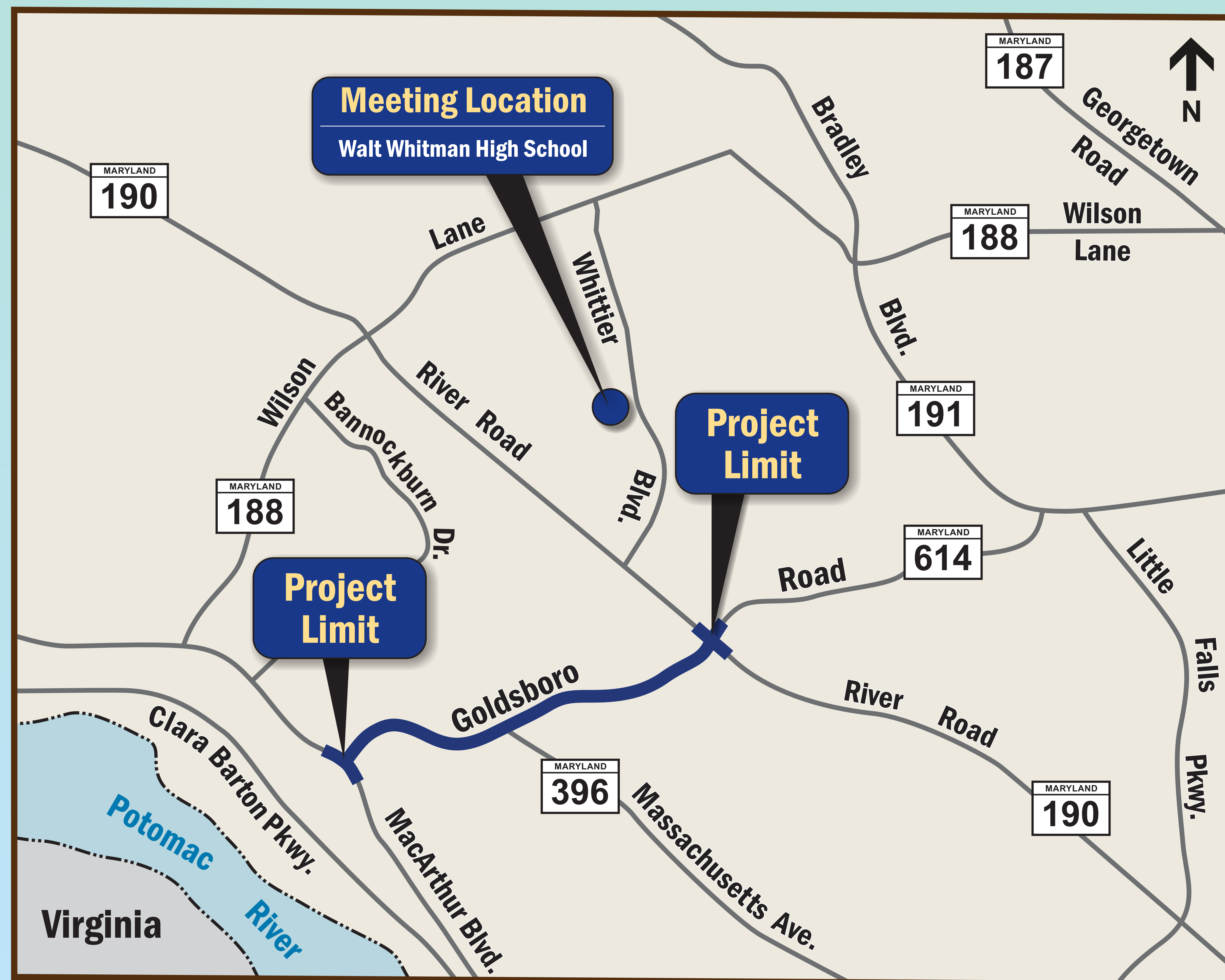


# GOLDSBORO ROAD

## PEDESTRIAN AND BICYCLE IMPROVEMENTS

### FROM MACARTHUR BOULEVARD TO RIVER ROAD



## PUBLIC MEETING

**March 8, 2018**

Walt Whitman High School Cafeteria  
7100 Whittier Blvd., Bethesda, MD 20817

**Project Manager:** John B. “JT” Thomas, PTP

**Phone:** (240) 777-7240

**Email:** [John.Thomas@montgomerycountymd.gov](mailto:John.Thomas@montgomerycountymd.gov)

**Mail:** Montgomery County Division of Transportation  
Division of Transportation Engineering  
100 Edison Park Drive, 4th Floor  
Gaithersburg, MD 20878

**Provide Comments by  
Tonight’s Feedback, Mail, or Email  
thru April 9, 2018**

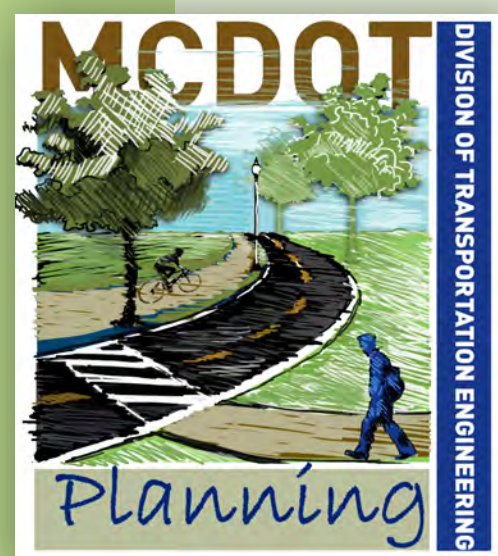
Montgomery County Department of Transportation (MCDOT)  
Division of Transportation Engineering

Al Roshdieh, Director

Project Website: <http://www.montgomerycountymd.gov/dot-dte/projects/goldsboro/index.html>

Isiah Leggett, County Executive





# GOLDSBORO ROAD

## PEDESTRIAN AND BICYCLE IMPROVEMENTS

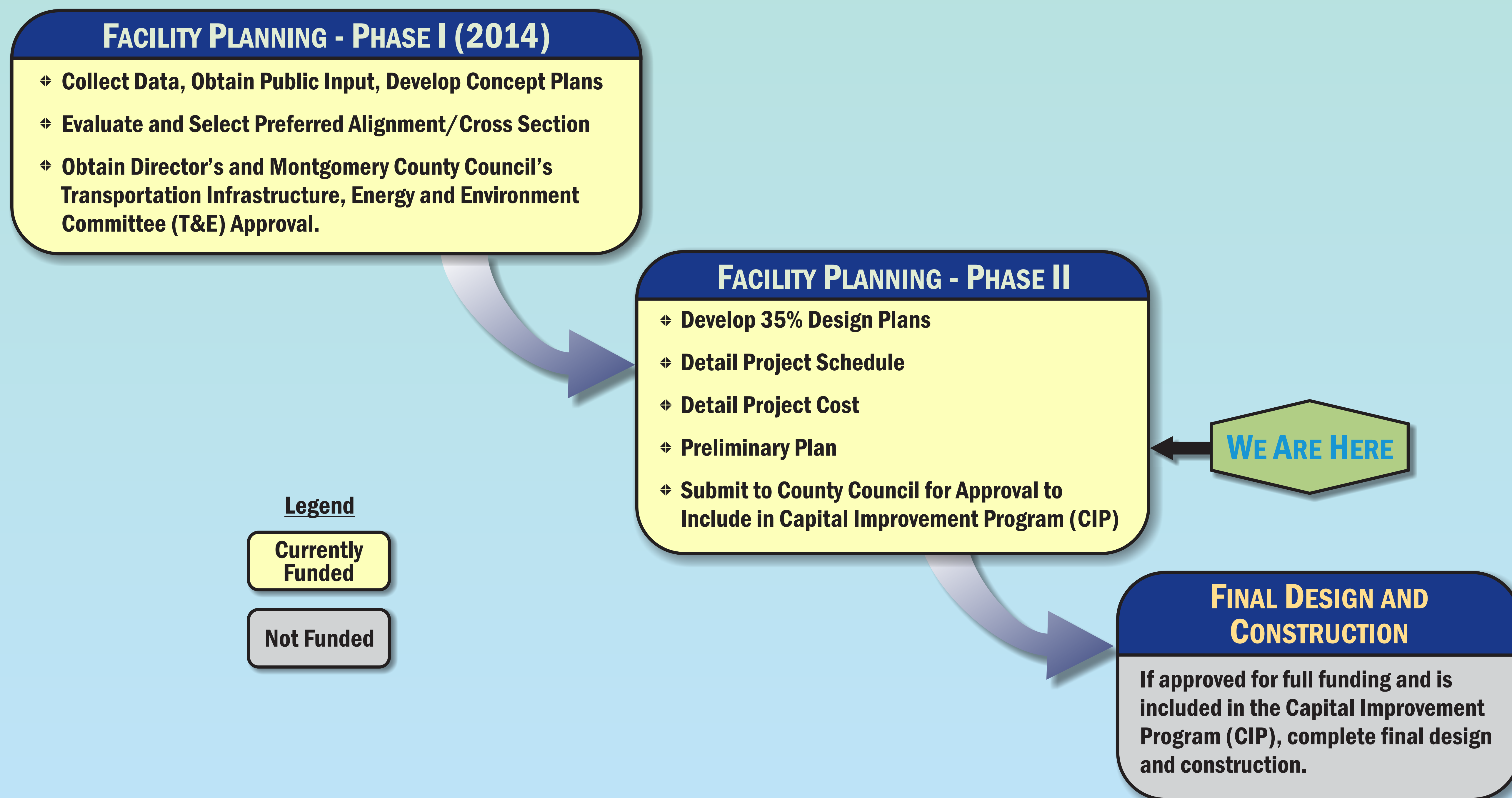
### FROM MACARTHUR BOULEVARD TO RIVER ROAD



#### PROJECT PURPOSE

- ✦ Promote pedestrian and bicycling use along the Goldsboro Road corridor
- ✦ Provide connections to existing and proposed pedestrian and bicycle facilities
- ✦ Improve access for pedestrians and bicyclists to transit stops, parks and recreation areas, places of worship, schools and homes
- ✦ Enhance safety for pedestrians and bicyclists along the corridor

#### THE LIFE OF A TRANSPORTATION PROJECT



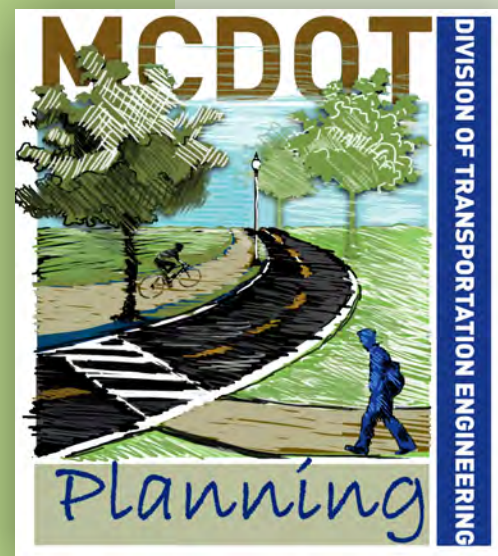
Montgomery County Department of Transportation (MCDOT)  
Division of Transportation Engineering

Al Roshdieh, Director

Project Website: <http://www.montgomerycountymd.gov/dot-dte/projects/goldsboro/index.html>

Isiah Leggett, County Executive





# GOLDSBORO ROAD

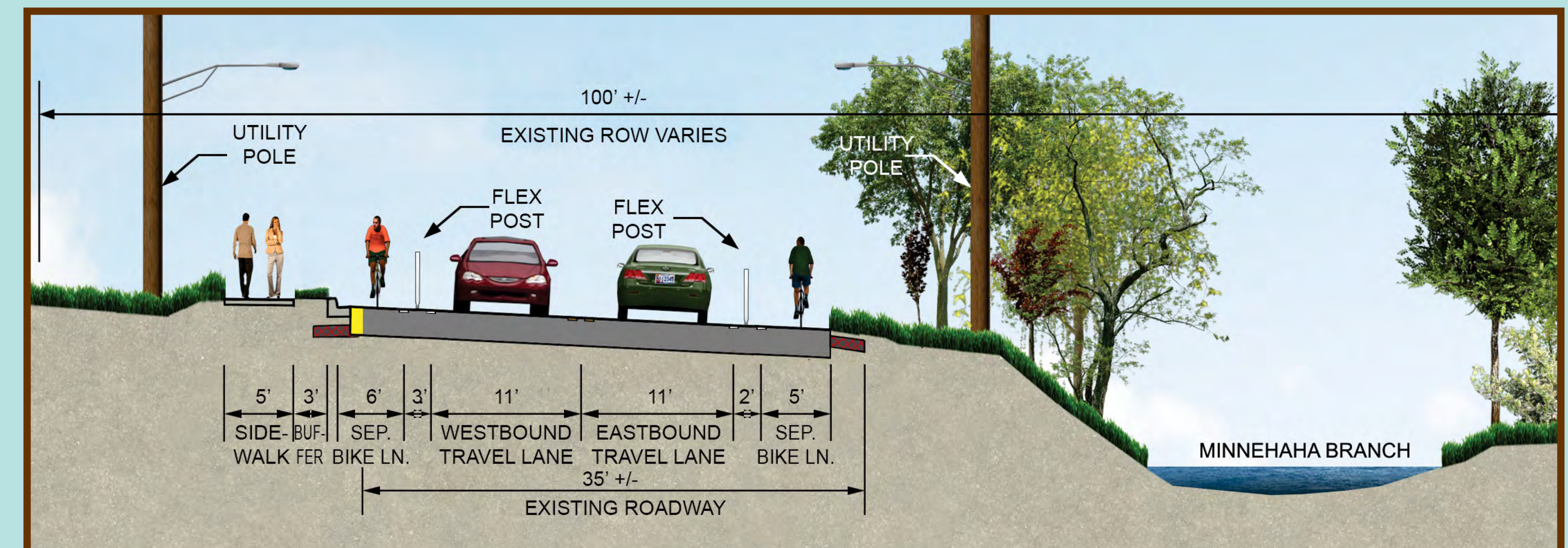
## PEDESTRIAN AND BICYCLE IMPROVEMENTS

### FROM MACARTHUR BOULEVARD TO RIVER ROAD



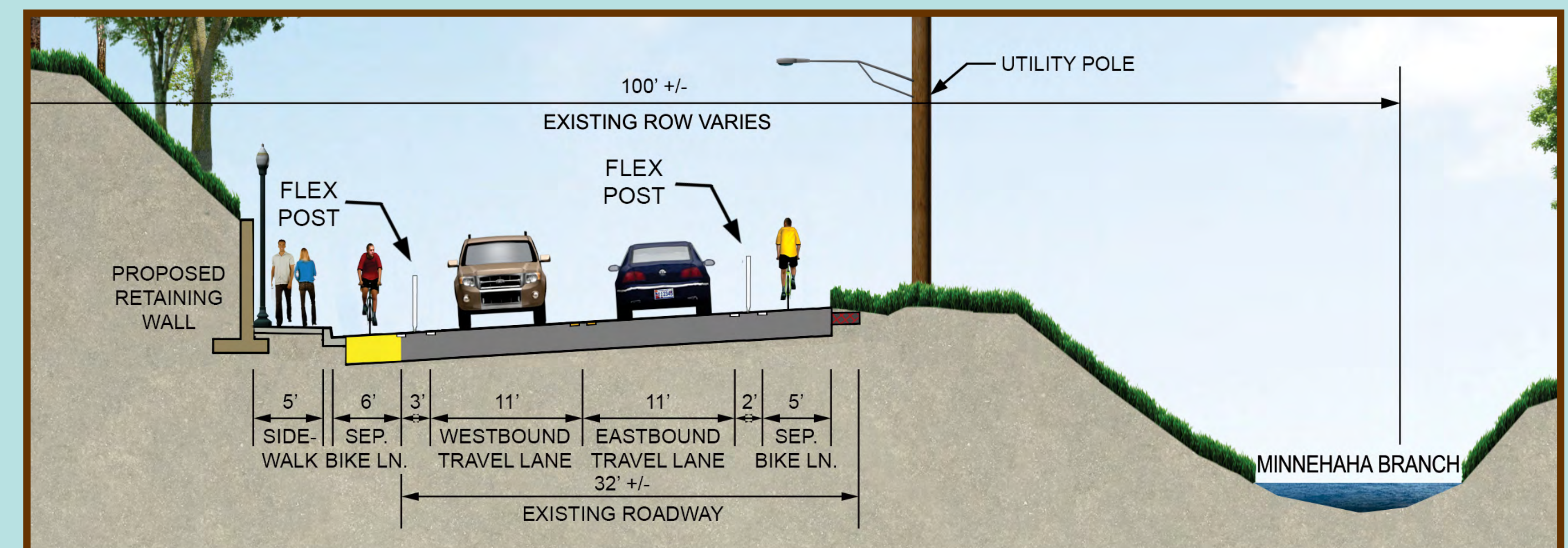
## SIDEWALK WITH GREEN BUFFER + SEPARATED BIKE LANES

### SECTION A-A



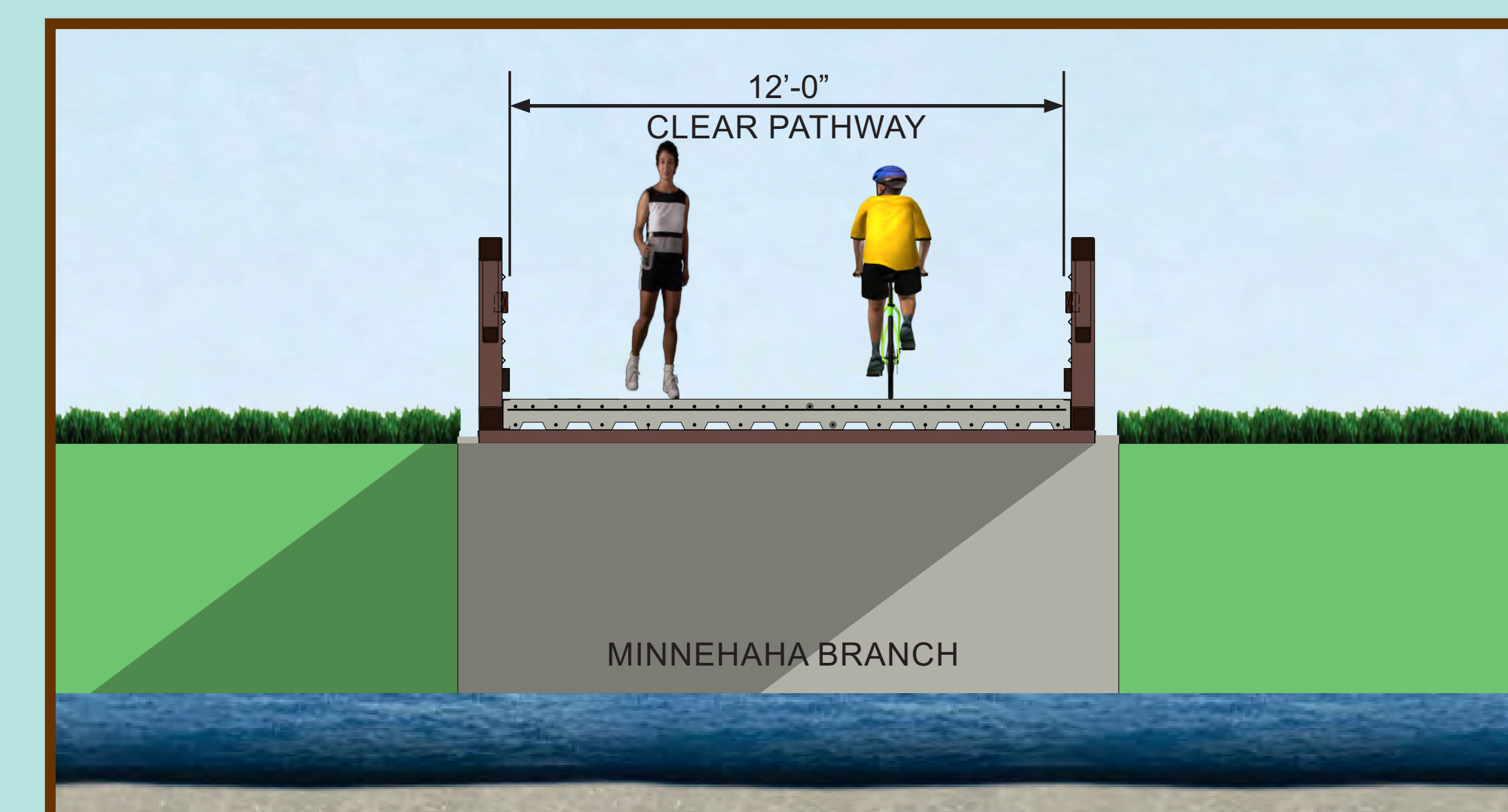
## SIDEWALK + SEPARATED BIKE LANES

### SECTION B-B

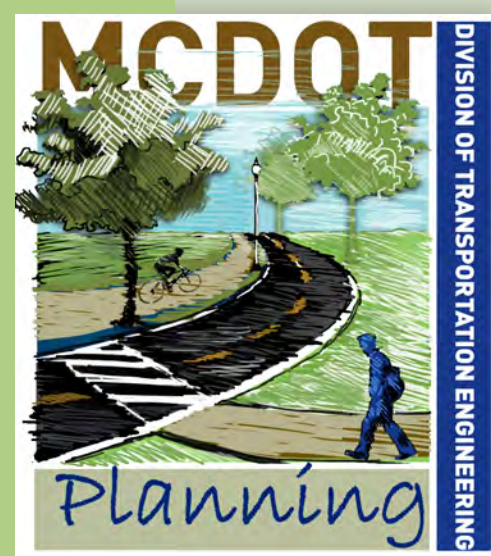


## PEDESTRIAN BRIDGE

OVER MINNEHAHA BRANCH  
AT WEDGEWOOD ROAD, STA. 142+25







# **GOLDSBORO ROAD**

## **PEDESTRIAN AND BICYCLE IMPROVEMENTS**

### **FROM MACARTHUR BOULEVARD TO RIVER ROAD**



#### **Proposed Roadway**



#### **Estimated Right-of-Way Impacts**

- ✦ 5 Properties, 10-15' width along roadway

#### **Estimated Project Construction Costs**

- ✦ Phase 1: \$12M
  - ✦ MacArthur Boulevard to Massachusetts Avenue
- ✦ Phase 2: \$10M
  - ✦ Massachusetts Avenue to River Road

#### **Estimated Project Schedule**

- ✦ 35% Design Completion - Spring 2018
- ✦ Final Design - To Be Determined
- ✦ Construction - To Be Determined

**Montgomery County Department of Transportation (MCDOT)**  
**Division of Transportation Engineering**

**Al Roshdieh, Director**

**Project Website: <http://www.montgomerycountymd.gov/dot-dte/projects/goldsboro/index.html>**

**Isiah Leggett, County Executive**