



# US 29 Flash BRT – Phase 2 CAC Meeting

June 3rd, 2025

# Agenda

- ▶ CAC Adjustments
- ▶ Background
- ▶ Project Overview
- ▶ Recap of Public Outreach
- ▶ Initial Assessment of Bicycle & Pedestrian Facility
- ▶ Next Steps & Engagement

# CAC Adjustments

# CAC Member Additions



## ▶ New Members

- One neighborhood representative
  - *Sharon Canavan - Northwood Four Corners Civic Association*
- One advocacy group representative
  - *Joan Johnson – WABA*
- One transit representative
  - *Michael Larkin - Action Committee for Transit*



## ▶ New Member Introductions

# CAC Format Adjustments



- ▶ Meeting focused on CAC questions and feedback



- ▶ CAC sits at a table together
  - Public seated separately



- ▶ Public provides input after CAC

# Project Overview



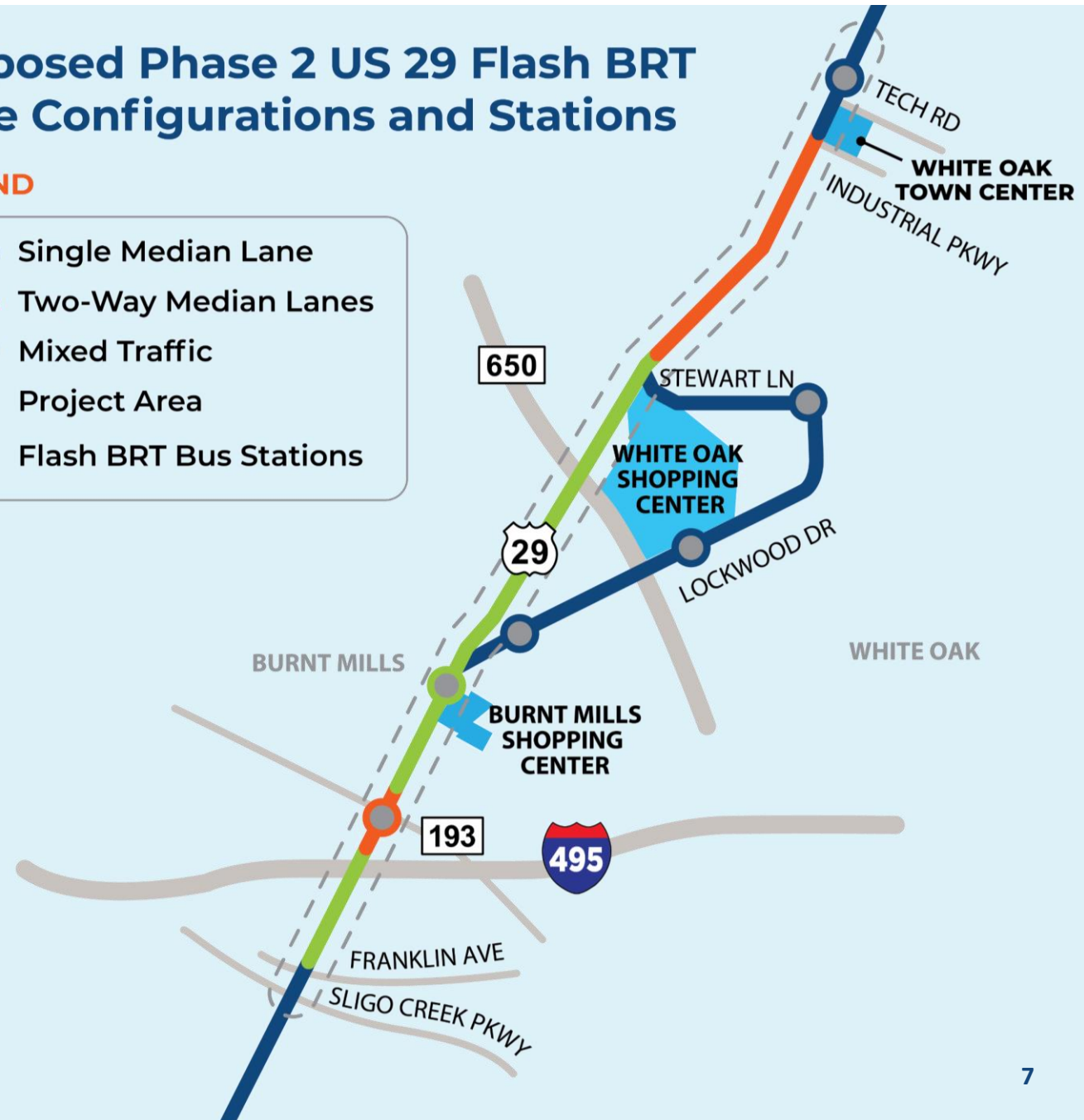
# US 29 Flash BRT – Phase 2

- ▶ **Corridor Length:** ~5 miles
- ▶ **Location:** From Sligo Creek Parkway to Tech Road
- ▶ **System:** Median-Running Bus Lanes Hybrid
- ▶ **Design Task:** 35% Preliminary Engineering
- ▶ **Stations:** Improvements at Four Corners and Burnt Mills

## Proposed Phase 2 US 29 Flash BRT Lane Configurations and Stations

### LEGEND

- Single Median Lane
- Two-Way Median Lanes
- Mixed Traffic
- Project Area
- Flash BRT Bus Stations



# BRT Median Lane Operations

## AM (5 AM - 12 PM): BRT Lane Open to Southbound BRT Services

### LEGEND

- BRT Lane(s) Open
- Mixed Traffic
- Project Area
- Flash BRT Bus Stations



## PM (1 PM - 1 AM): BRT Lane Open to Northbound BRT Services

### LEGEND

- BRT Lane(s) Open
- Mixed Traffic
- Project Area
- Flash BRT Bus Stations





# Recap of Public Feedback

# Feedback Summary

- ▶ Add stops and expand service for existing Flash service.
- ▶ Traffic congestion concerns.
- ▶ Supportive of dedicated bus lanes on US 29.
- ▶ Pedestrian safety at crossings and at the stations.
- ▶ Neighborhood cut through traffic concerns.
- ▶ Neighborhood access concerns.
- ▶ Concern about loss of property.

# Initial Assessment of Bicycle & Pedestrian Facility Feasibility

# Initial Feasibility Assessment Approach

- ▶ Identify planned bicycle and pedestrian facilities
  - Master planned facilities
  - Facilities noted in studies
  - Facilities noted by public
- ▶ Bicycle and pedestrian facility parameters
  - Elements and size of facilities
- ▶ Map planned bicycle and pedestrian facilities
- ▶ Identify conflicts

# Initial Feasibility Considerations

- ▶ Significant encroachment on residential and business structures
- ▶ Need for new or adjustments to major structures
  - Retaining walls
  - Bridge structures
- ▶ Potential to negatively affect parks and cultural resources
- ▶ Potential to negatively affect natural resources



# Planned Bicycle and Pedestrian Facilities



## Reviewing documented recommendations

- 2018 Bicycle Master Plan
- US 29 Mobility & Reliability Study
- Small Area Plans
- 2023 Pedestrian Plan
- 2024 Complete Streets Design Guide



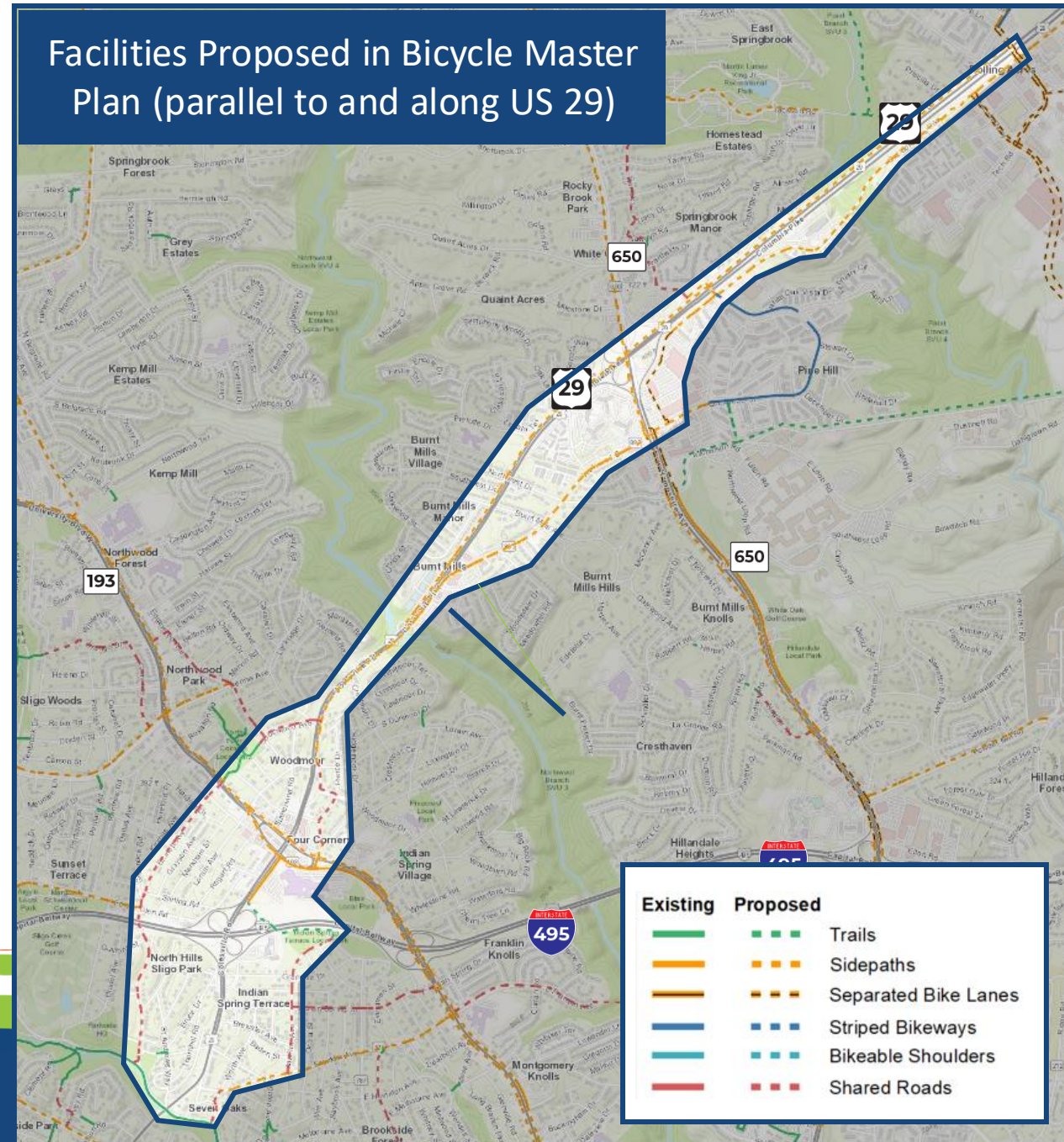
## Identifying conflicting recommendations



## Developing and evaluating feasibility

- Impact
- Property Needs
- Cost Implications

## Facilities Proposed in Bicycle Master Plan (parallel to and along US 29)



# Planned Bicycle and Pedestrian Facilities

- ▶ Plans reflect long-range aspirations
- ▶ Planned facilities focus on needs when new structures are built
- ▶ Transportation projects may not be able to construct all planned facilities
  - Land is not available
  - Conflicts are major
- ▶ Advance planned facilities which are feasible

# Bicycle and Pedestrian Facility Parameters

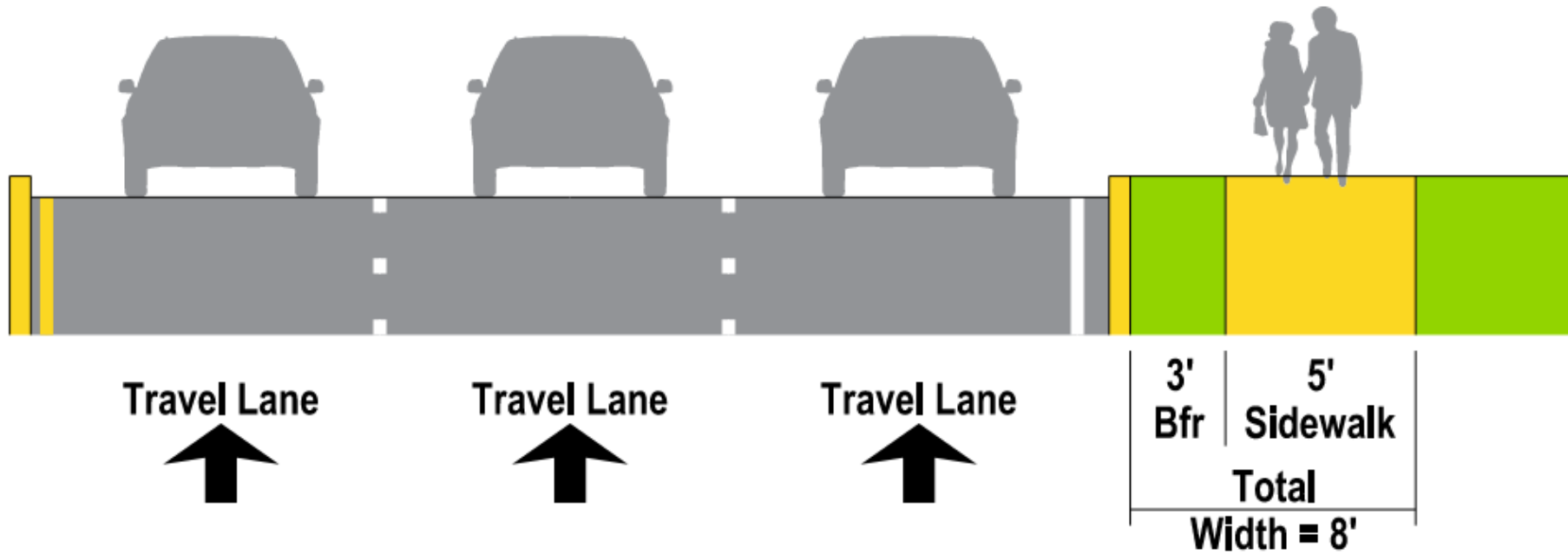
- ▶ Identified dimensions for various facility types
  - Sidewalk, sidepath, breezeway
- ▶ Dimensions are defined in various planning documents
- ▶ Developed visuals to show these facilities

# Facility Types and Parameters\*

- ▶ Sidewalk (5' minimum width)
- ▶ Sidepath (11' minimum width)
- ▶ *Breezeway* (varies)
  - Sidepath
  - Shared Road
  - *Breezeway* Trail
- ▶ Buffers
  - Each facility type has a buffer between the street and the facility

*\*Dimensions from Complete Streets Design Guide  
(variable widths dependent on location)*

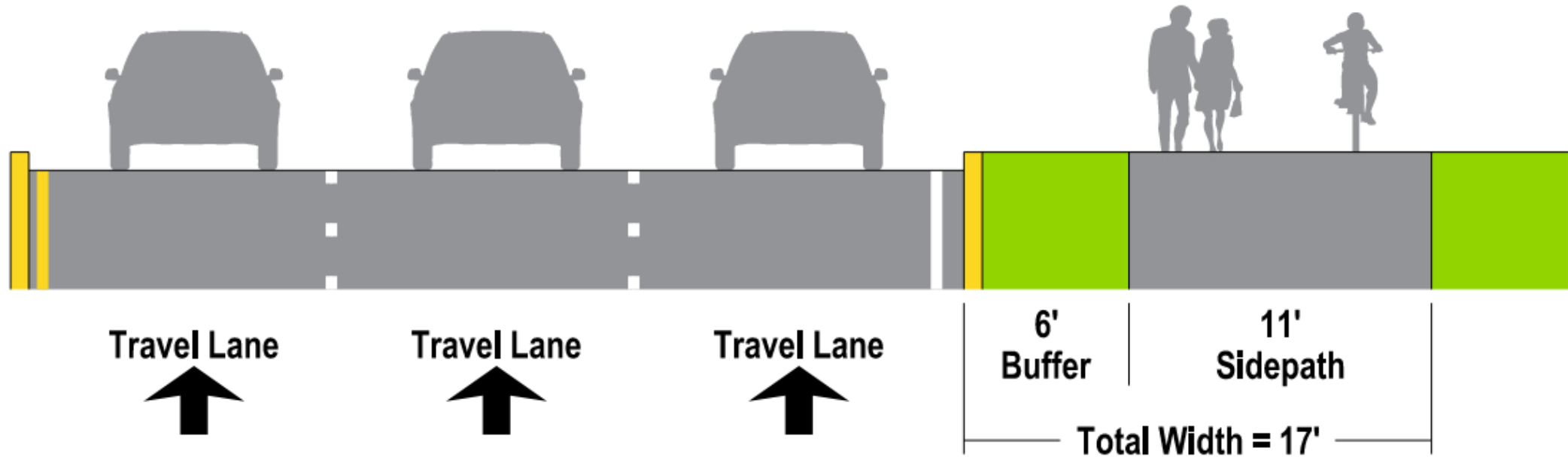
# Potential Bike/Ped Treatment - Sidewalk\*



*\*Dimensions from Complete Streets Design Guide  
(variable widths dependent on location)*

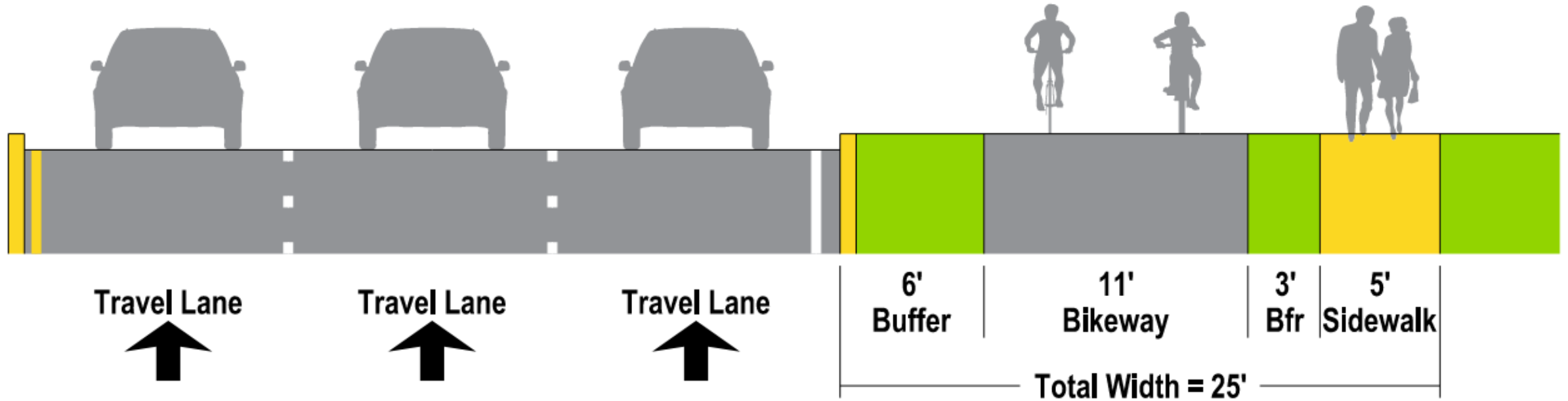


# Potential Bike/Ped Treatment – Sidepath\*



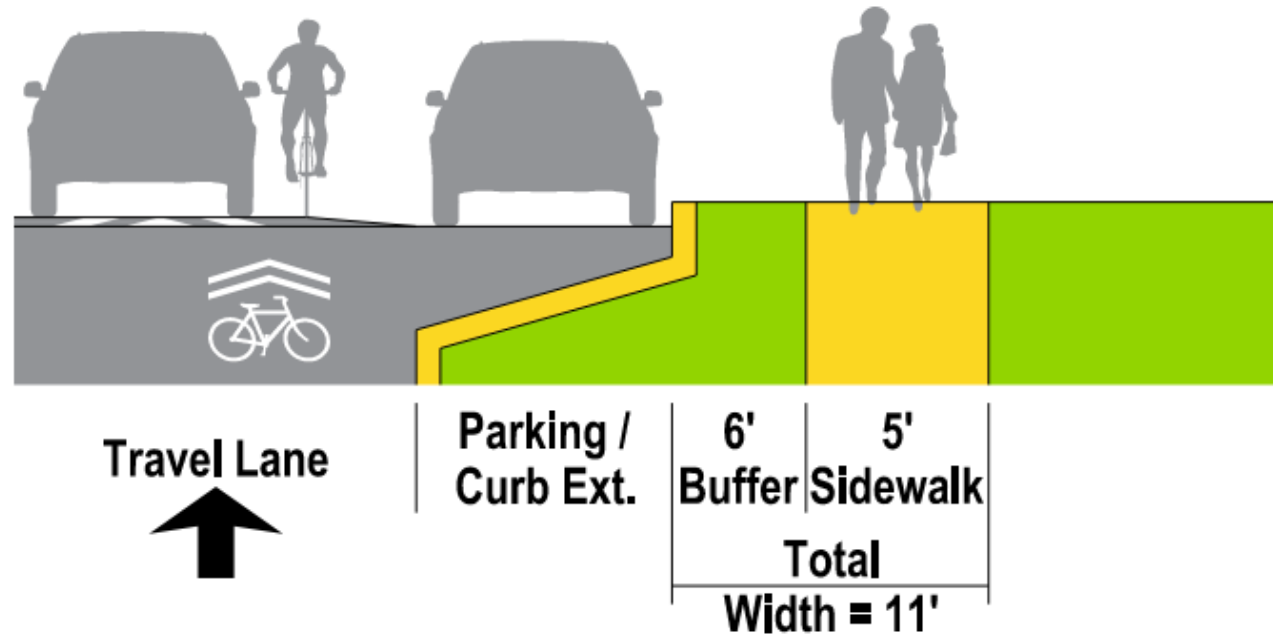
*\*Dimensions from Complete Streets Design Guide  
(variable widths dependent on location)*

# Potential Bike/Ped Treatment - *Breezeway* Sidepath\*



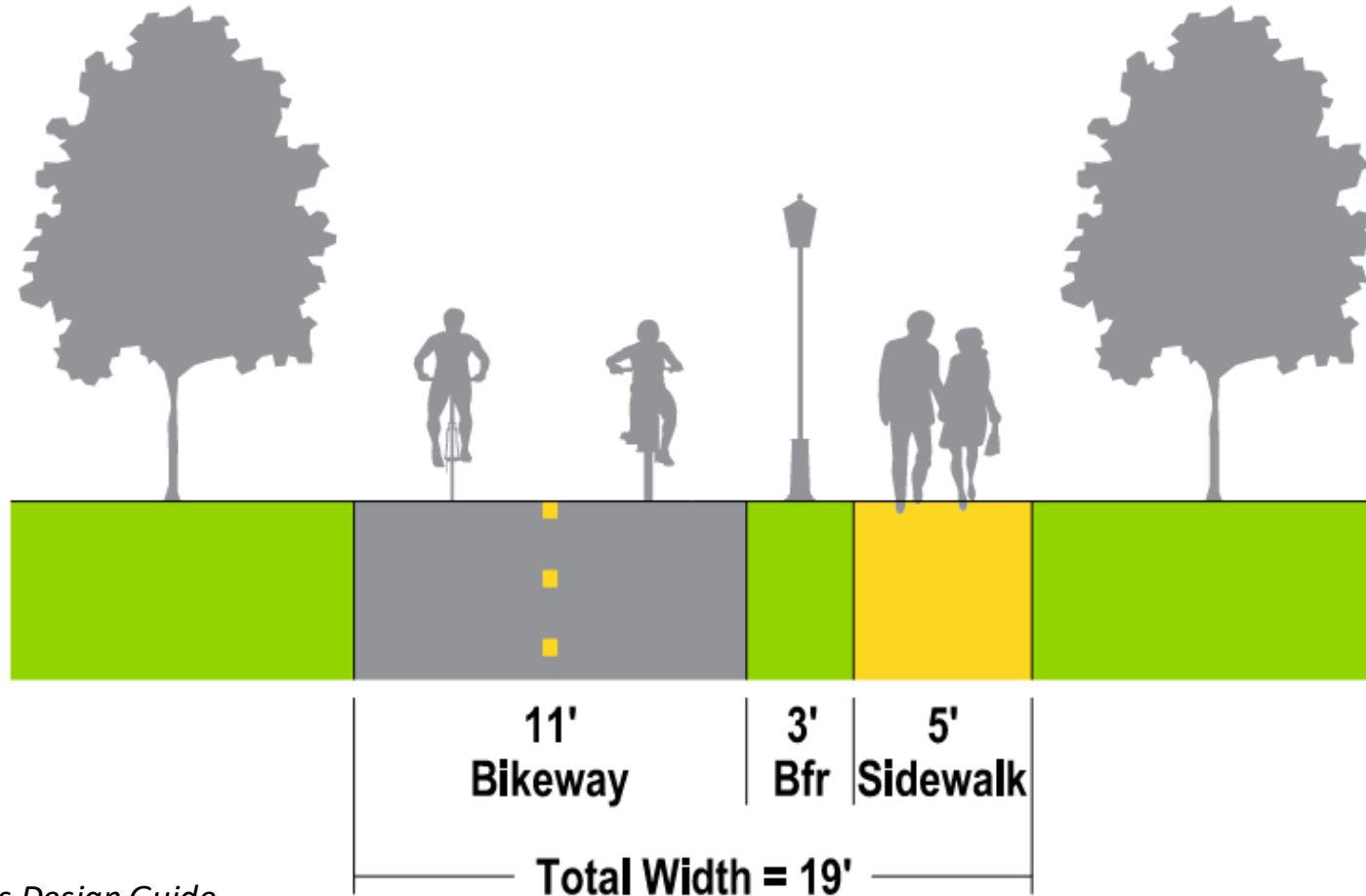
*\*Dimensions from Complete Streets Design Guide  
(variable widths dependent on location)*

# Potential Bike/Ped Treatment - *Breezeway Shared Road*\*



*\*Dimensions from Complete Streets Design Guide  
(variable widths dependent on location)*

# Potential Bike/Ped Treatment - *Breezeway Trail*\*



*\*Dimensions from Complete Streets Design Guide  
(variable widths dependent on location)*

# Map Planned Bicycle and Pedestrian Facilities

- ▶ Added all planned bicycle and pedestrian facilities to the corridor
- ▶ Identified potential for major conflicts
- ▶ Many of the planned facilities would be infeasible
- ▶ Focused on one section to demonstrate concerns across the corridor



# Documented Recommended Bicycle and Pedestrian Facilities

## Southwood Avenue to Lockwood Drive



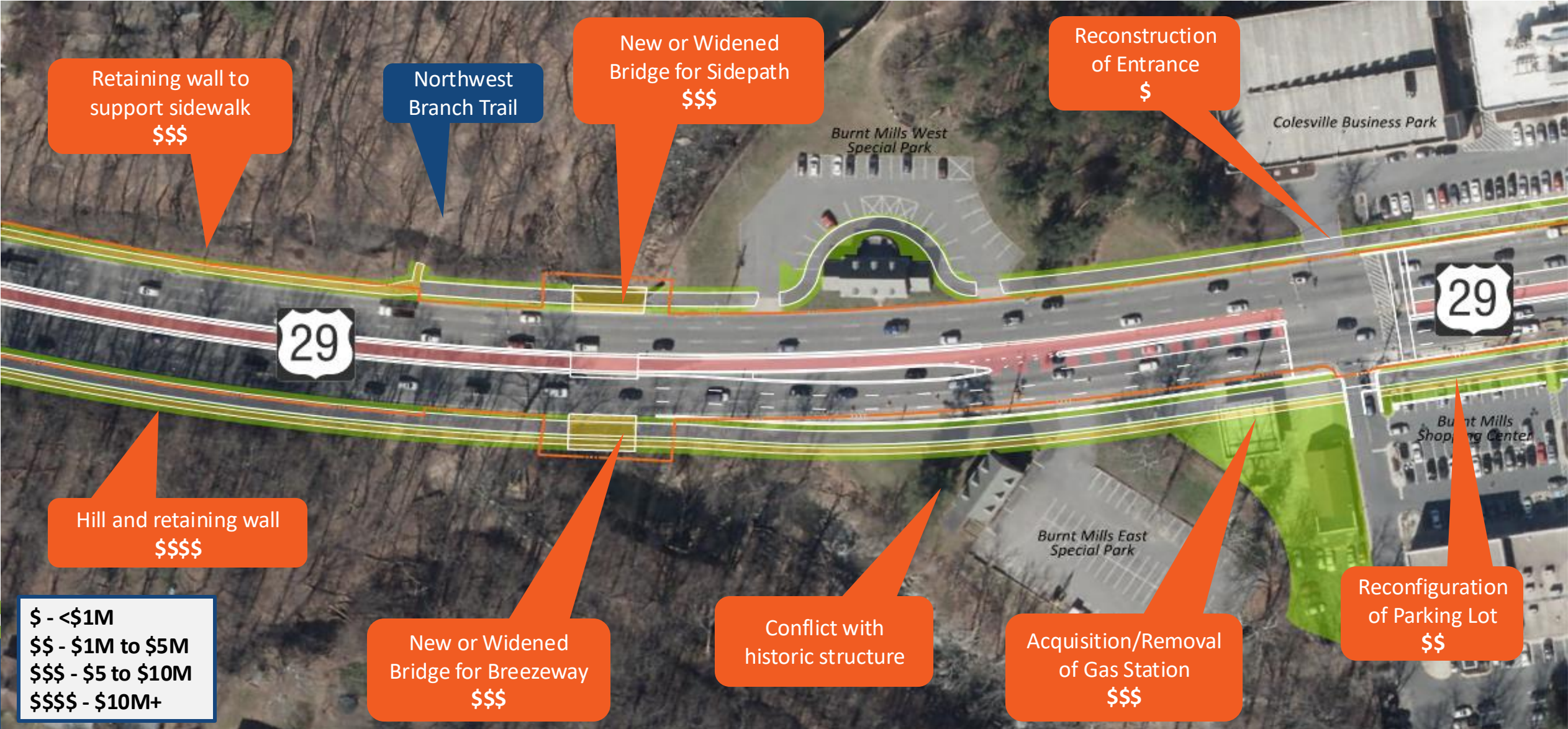
Existing	Proposed	
		Trails
		Sidepaths
		Separated Bike Lanes
		Shared Roads
		Sidewalks
		Breezeway Network

# Identified Potential for Major Conflicts

- ▶ Additional property needs
- ▶ Conflicts with existing structures
- ▶ Need for major retaining walls
- ▶ Additional bridge structures
- ▶ Utility relocations
- ▶ Environmental Concerns

# Specific Conflicts at Northwest Branch & Burnt Mills

## Conceptual Plan View



# Conflicts in Other Portions of the Corridor

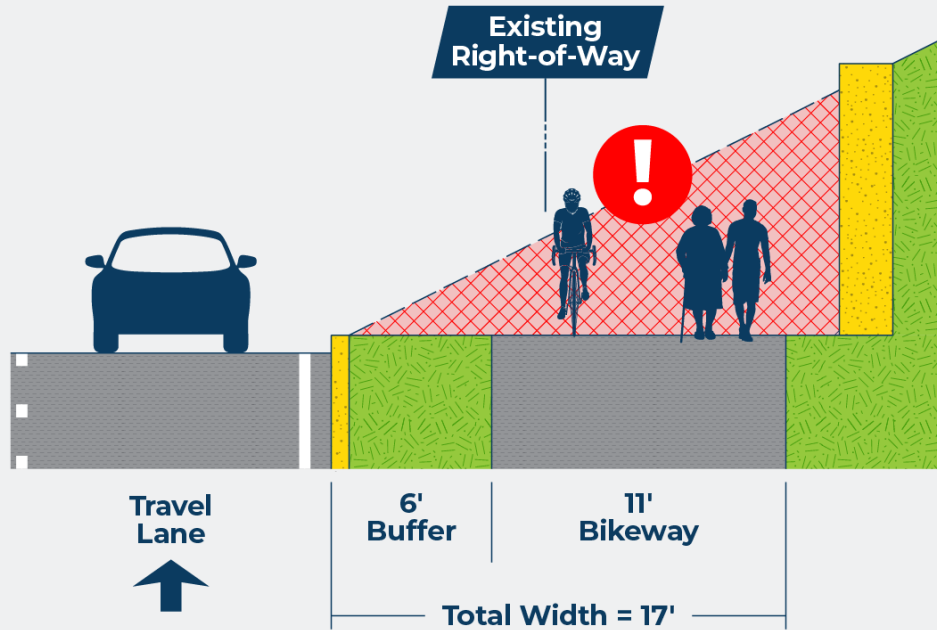
- ▶ Illustrate conflicts at specific corridor locations
  - Simple visualization of proposed facility
  - Photo of location
  - Note specific concerns
- ▶ Locations for consideration
  - North of Burnt Mills
  - Burnt Mills
  - South of Northwest Branch
  - North of Four Corners
  - South of Beltway





# North of Burnt Mills

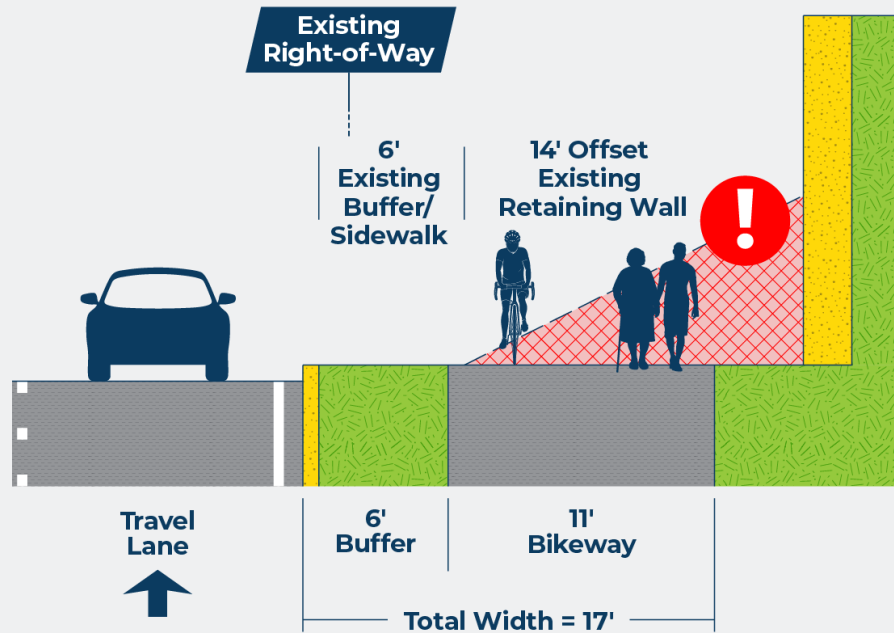
- ! ROW impacts
- ! Excavation and tree removal
- ! Construction of retaining wall





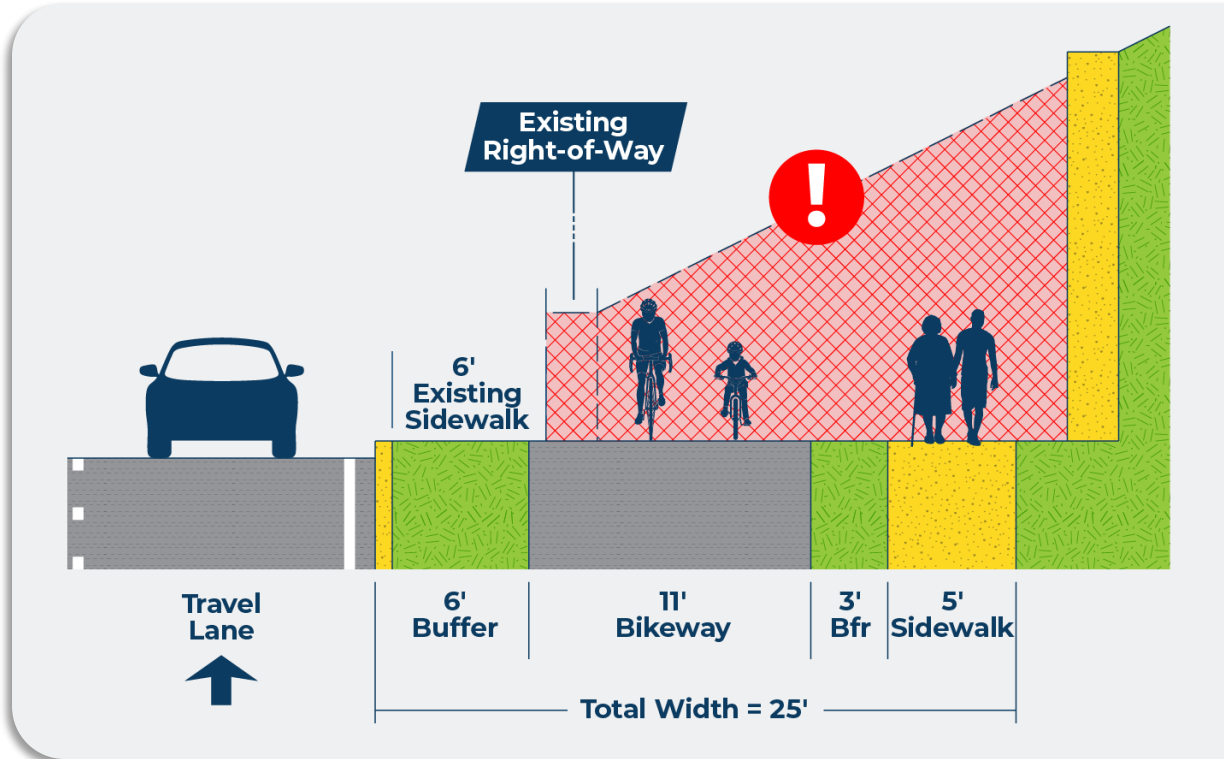
# Burnt Mills

- ! ROW impacts
- ! Excavation
- ! Utility relocation
- ! Streetlight relocation
- ! Modification of existing retaining wall



# South of Northwest Branch

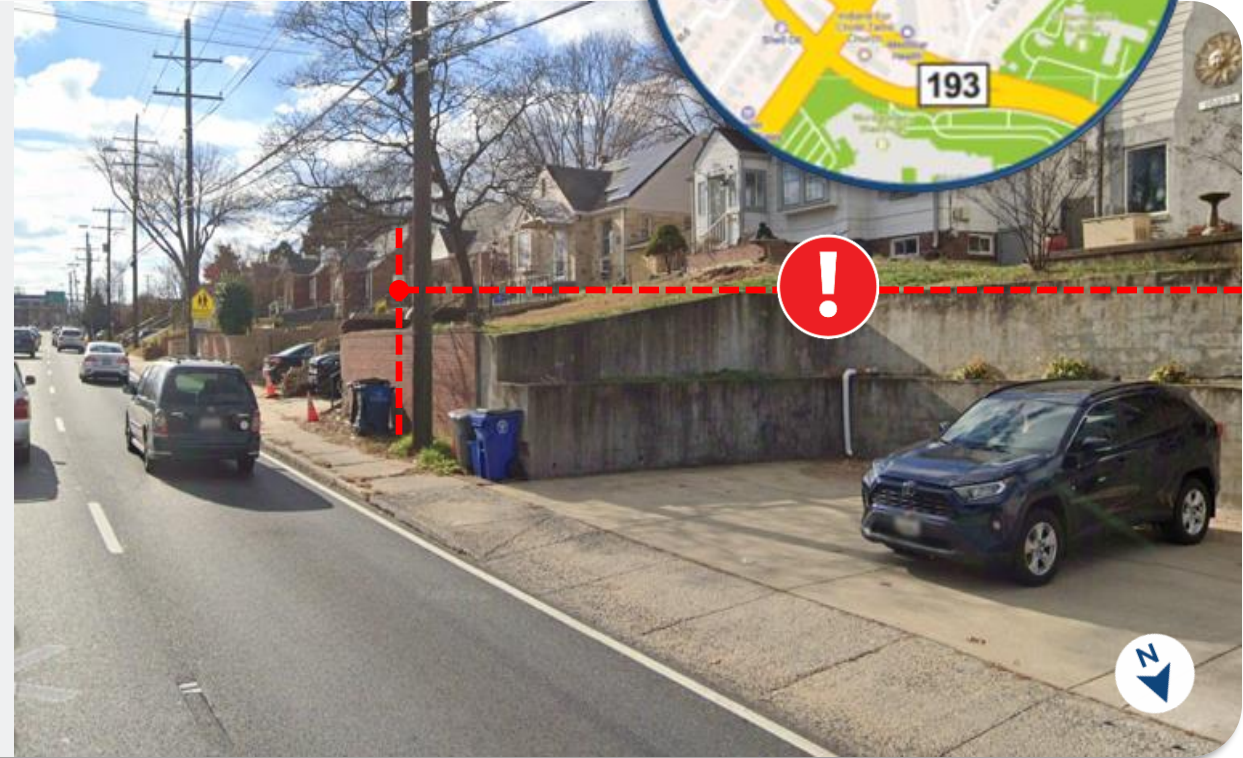
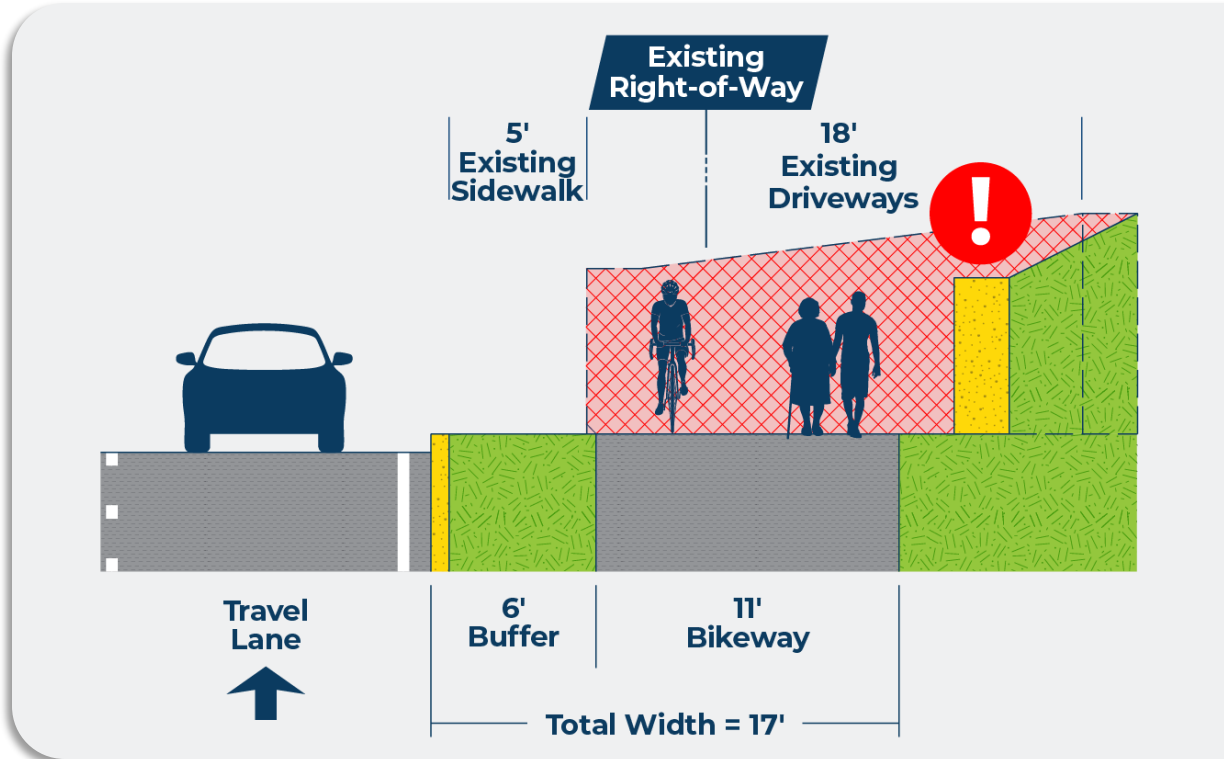
- ! ROW impacts
- ! Utility relocation
- ! Streetlight relocation
- ! Excavation and tree removal
- ! Construction of retaining wall





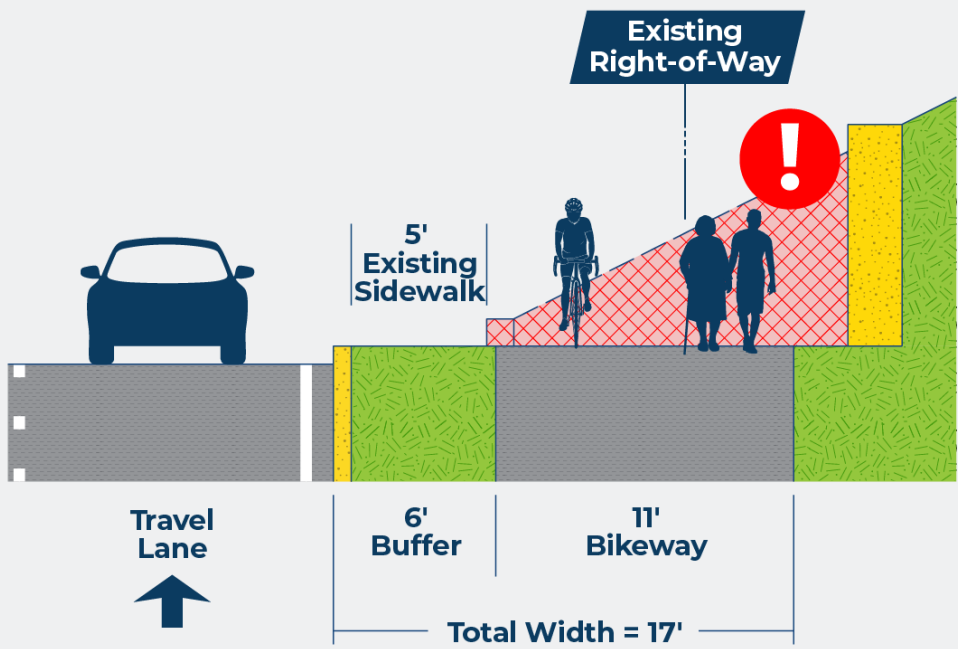
# North of Four Corners

- ! ROW impacts
- ! Residential modifications
- ! Parking removal
- ! Utility relocation
- ! Streetlight relocation
- ! Construction of retaining wall



# South of Beltway

- ! ROW impacts
- ! Residential modifications
- ! Utility relocation
- ! Construction of retaining wall



# Implementation of Documented Recommended Facilities Is Not Feasible

- ▶ Major conflicts exist across much of the corridor
- ▶ High impact on adjacent properties
- ▶ Potential for environmental impacts
- ▶ High cost for many facilities
- ▶ Construction timeline would be long



# Implementation of Some Facilities Is Possible

- ▶ Some sections will have minimal conflicts
- ▶ Some sections are important connections and should be prioritized
- ▶ Facility type should be reconsidered in some sections



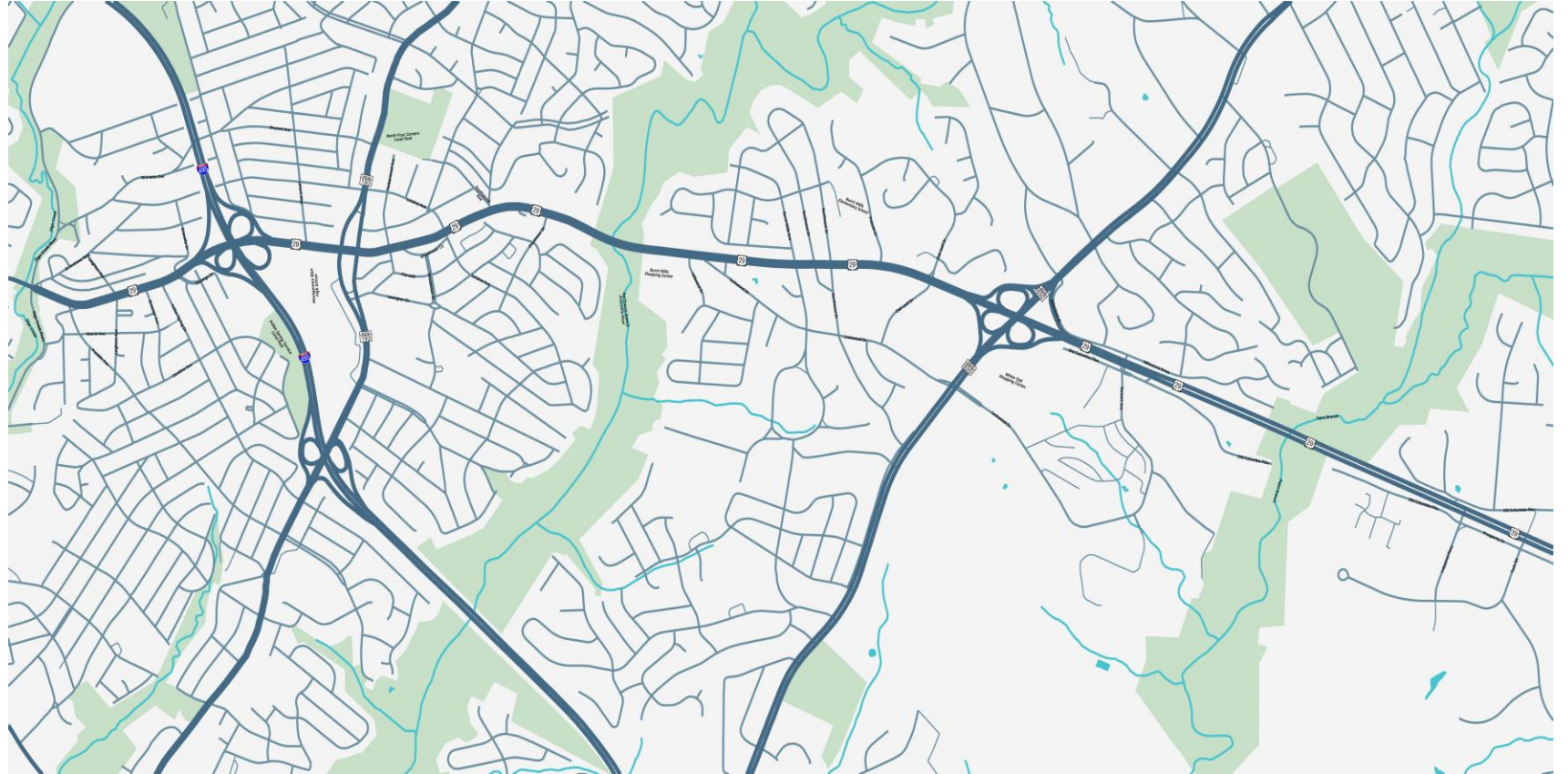
# Identify Most Pressing Bicycle and Pedestrian Needs

- ▶ Connections that are most important
- ▶ Facilities that are most constrained
- ▶ Understand the types of uses to be served

# Overview of Public Meeting Feedback Activity

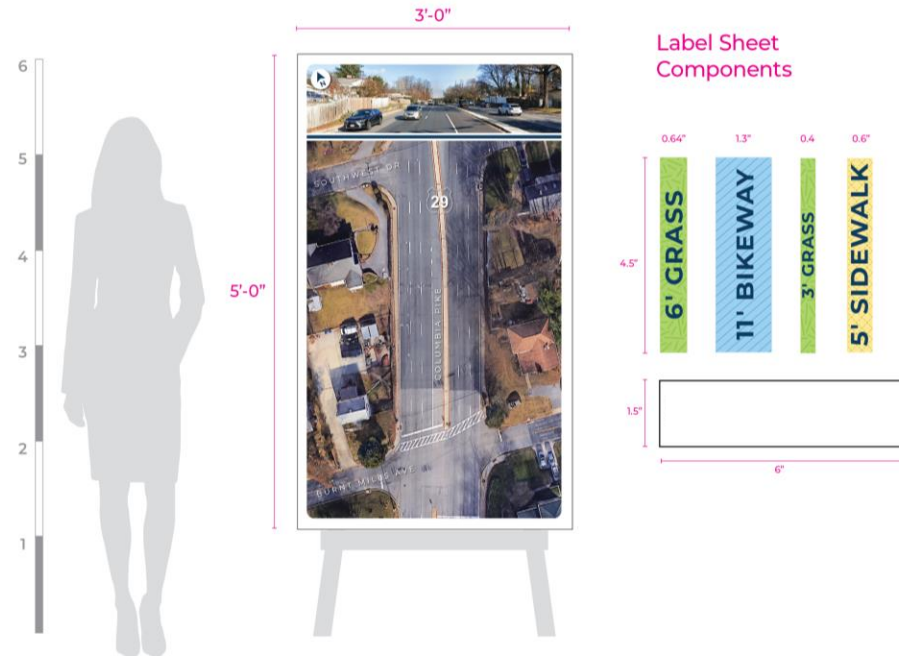
# Connection Activity

- Roll Map of Corridor
  - Provide the attendees sticky dots to identify:
    - *constraints*
    - *key connections*



# Facility Fit Activity

- ▶ Board Map with Aerial Images at Sample Areas
  - “Create your own” Typical Sections – Provide pieces on stickers that the public can overlay on the aerial map at each location with their name next to it to show their recommendation.

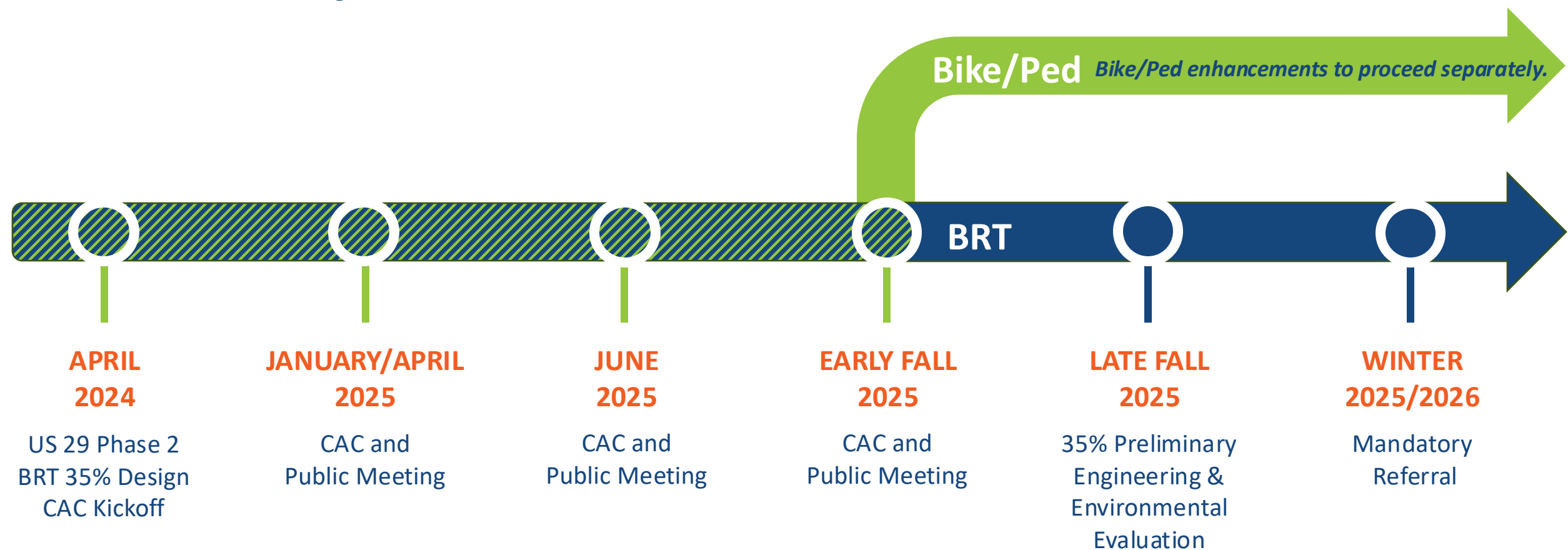


Board Activity Sample



# Next Steps & Engagement

# Phase 2 Project Timeline





# Thank You

## Questions?

Niño I. Ranjo

Project Manager

[nino.ranjo@montgomerycountymd.gov](mailto:nino.ranjo@montgomerycountymd.gov)