

# MACARTHUR BOULEVARD BIKEWAY & PEDESTRIAN SAFETY IMPROVEMENTS

(OLD ANGLERS INN TO FALLS RD.  
INTERSECTION)

PUBLIC MEETING  
JANUARY 28, 2026



MacArthur Blvd.  
at Old Anglers Inn  
Looking North

**THIS MEETING WILL BE RECORDED**





# MACARTHUR BOULEVARD BIKEWAY & PEDESTRIAN SAFETY IMPROVEMENTS

(OLD ANGLERS INN TO FALLS RD.  
INTERSECTION)

PUBLIC MEETING  
JANUARY 28, 2026



MacArthur Blvd.  
at Old Anglers Inn  
Looking North

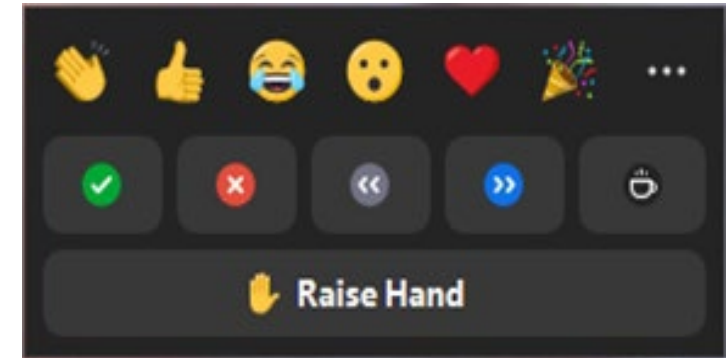
**THIS MEETING IS BEING RECORDED**





# Zoom Meeting Controls

- All microphones have been muted and cameras turned off.
- **To reduce the bandwidth of tonight's meeting, please do not turn on your video camera.**
- Following tonight's presentation, you will have the opportunity to provide testimony. There will also be a Question-and-Answer session after the testimony portion if time allows. **Please wait until the presentation ends to raise your hand to testify or ask a question.** Alternatively, you may type your question into the chat box any time during tonight's hearing.
- **To raise your hand** following the presentation, please click on the "React" icon at the bottom of your screen, and then click "Raise Hand."
- **If you called into tonight's meeting via telephone, press \*9 to raise your hand and \*6 to unmute yourself.**



# Project Team

- *Montgomery County Department of Transportation*

Division of Transportation Engineering:

- **Cameron McAllister**, Sr. Planning Specialist – Project Manager
- **Rebecca S. Park**, P.E., Unit Manager - Transportation Engineering
- **Dara Soum**, Chief - Planning & Design Section
- **Joseph Moges**, Chief - Division of Transportation Engineering
- *Consulting Design Team – Mercado Consultants, Inc.*
  - **Michael W. Mercado**, P.E.







# Agenda

1. Project Purpose
2. Project Goals
3. Ped/Bike Facility Connectivity
4. Existing Conditions
5. Project Scope
6. Preliminary Design Concepts
7. Next Steps
8. Cost Estimates
9. Question and Answer Session





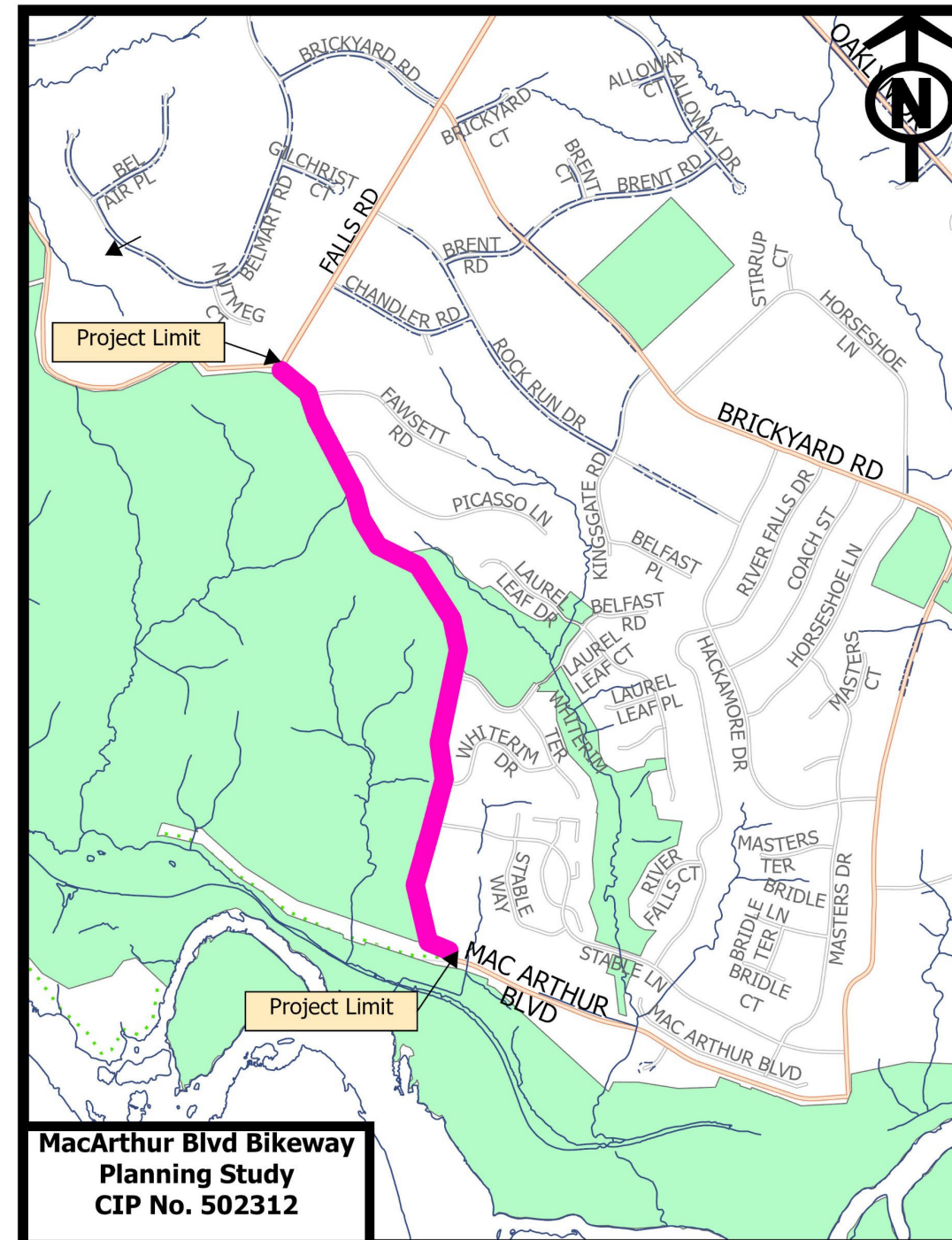
# Project Purpose

**Project Purpose:** To develop conceptual alternatives for a shared use path on MacArthur Blvd between Old Anglers Inn and MD189 (Falls Road).

**Project Phase:** Facility Planning-Phase I.

**Project Funding:** Not funded for final design and construction.

**Meeting Purpose-**To gather community feedback on the proposed alternatives.



MacArthur Blvd Bikeway  
Planning Study  
CIP No. 502312





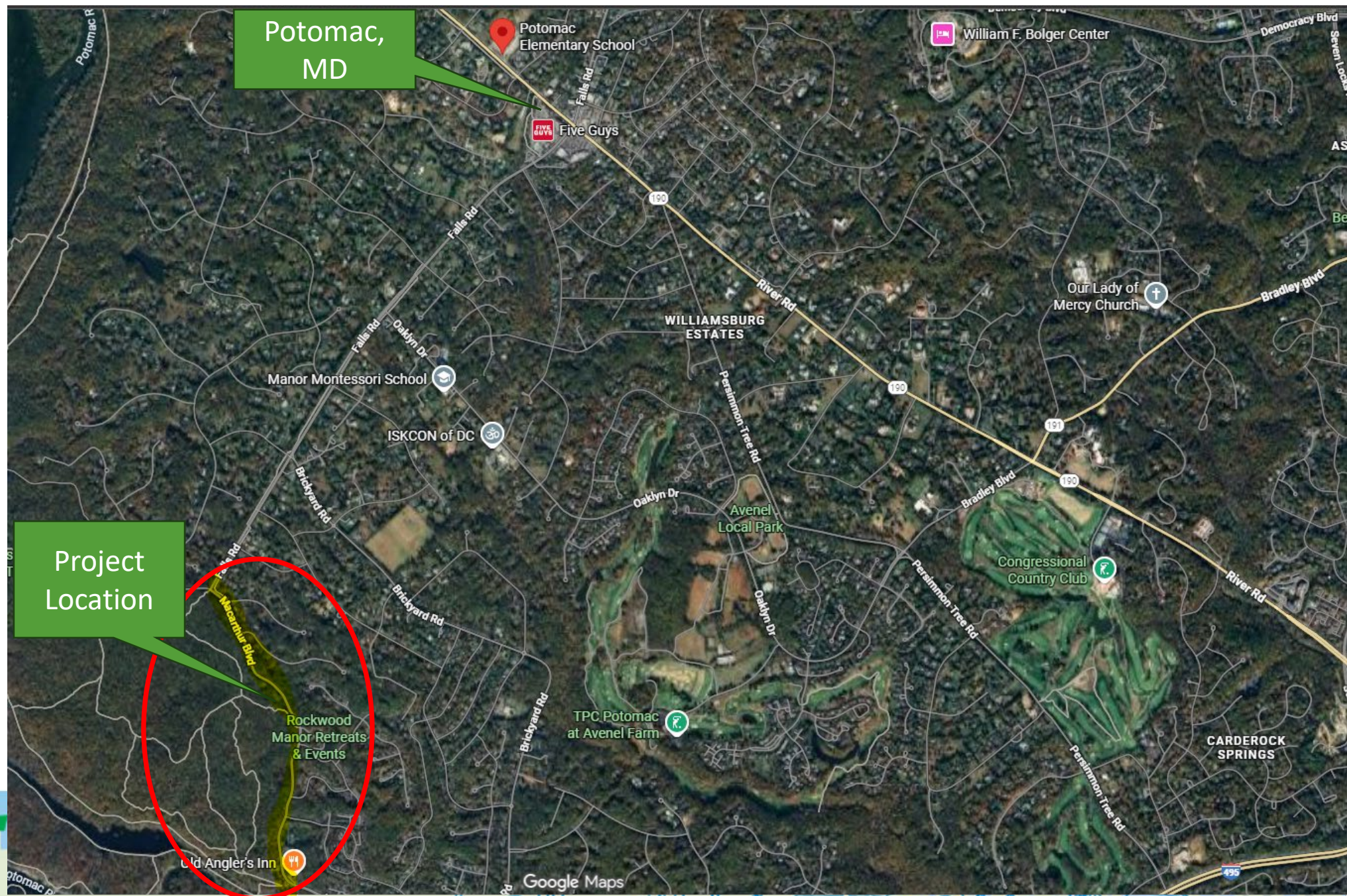
# Project Goals

- Improve access and safety for all residents traveling the corridor
- Improve roadway safety by providing an alternate route for pedestrians of all ages and cyclists at any experience level.
- Provide connections to the Chesapeake and Ohio Canal National Historical Park, Old Angler's Inn restaurant, and the Shared Use Path along Falls Road.





# Project Area





# Ped/Bike Facility Connectivity

## ➤ MacArthur Blvd – Old Anglers Inn to Falls Rd.

- Concept Design Stage (This Project)

## ➤ MacArthur Blvd - Segment 1

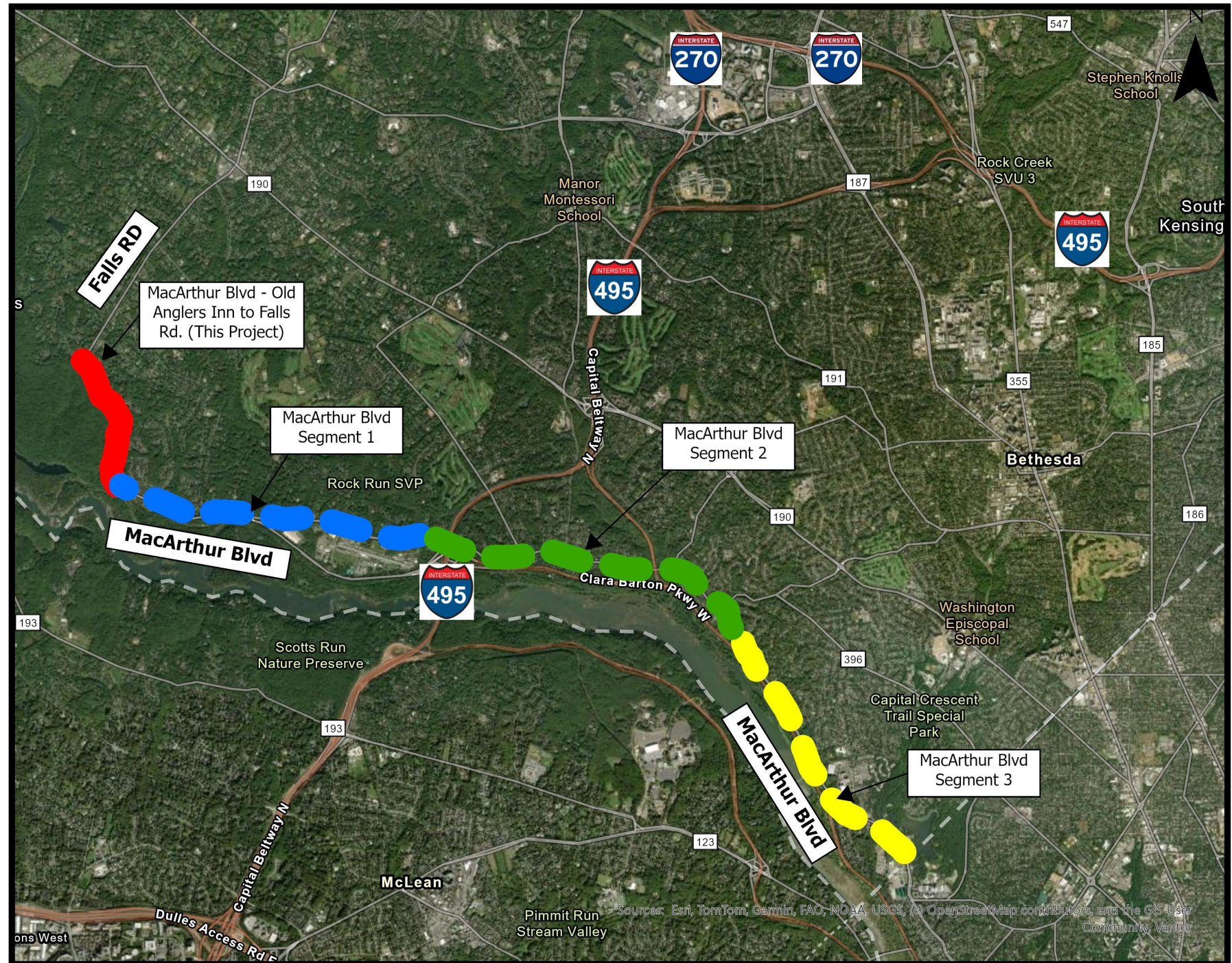
- 35% Design was completed in 2020.
- Not Funded for Final Design/Construction
- MCDOT-Division of Highways Services is currently planning to resurface
- [Project Website](#)

## ➤ MacArthur Blvd – Segment 2

- MCDOT-Division of Highways Services is currently planning to resurface
- [Pavement Resurfacing Program](#)

## ➤ MacArthur Blvd - Segment 3

- Final Design
- Construction scheduled during the repaving of Segments 1 & 2
- [Project Website](#)

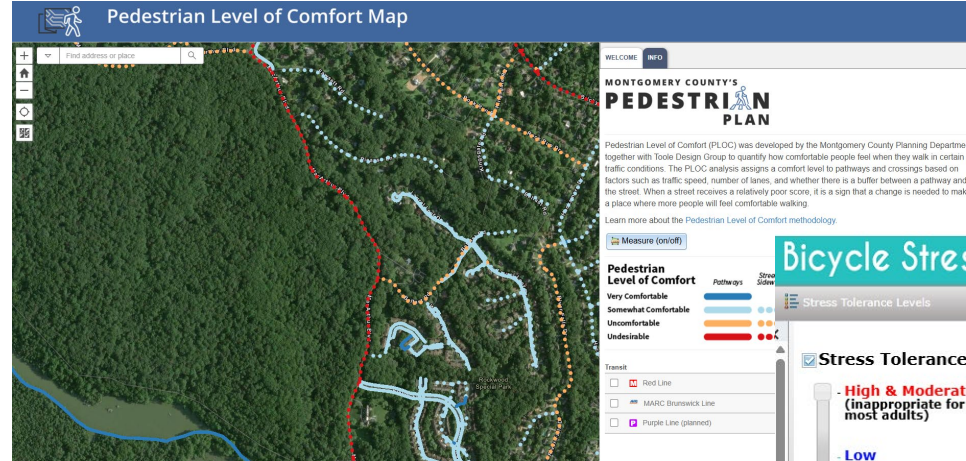




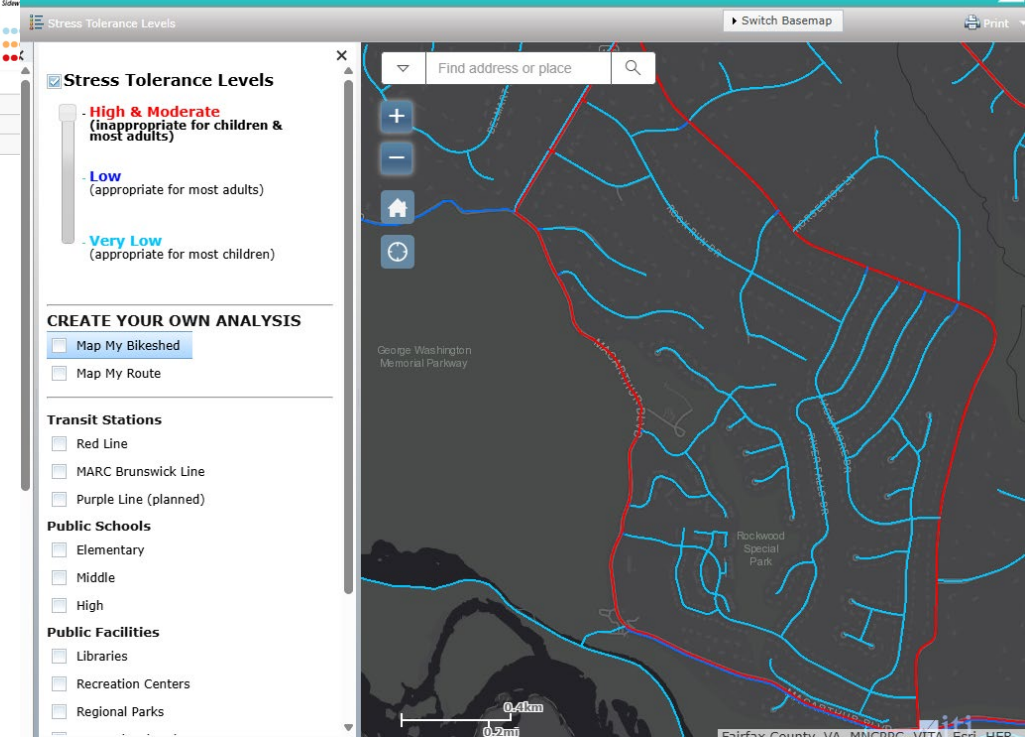
# Operational Considerations

## County Bicycle Stress Map

- Existing Conditions
- High Stress on MacArthur Blvd.
- Only Bikeable Shoulders are currently available, which provide no buffer from motor vehicle traffic
- Project will provide space with a buffer to facilitate space for residents to cycle & walk



## Bicycle Stress Map





# Existing Conditions

- Two 12-foot travel lanes
- 30 MPH posted speed limit
- Average Daily Traffic = 12,191 vehicles
  - MDOT Annual Average Daily Traffic (AADT)  
Locator





# MacArthur Blvd: Existing Conditions



Existing Bike Lane  
Looking South  
Near Old Anglers Inn



# MacArthur Blvd: Existing Conditions (Cont'd)



Near Old Anglers Inn  
Looking North



# MacArthur Blvd: Existing Conditions (Cont'd)



Old Anglers Inn  
looking North



# MacArthur Blvd: Existing Conditions (Cont'd)



Crosswalk South of  
Old Anglers Inn



# MacArthur Blvd: Existing Conditions (Cont'd)



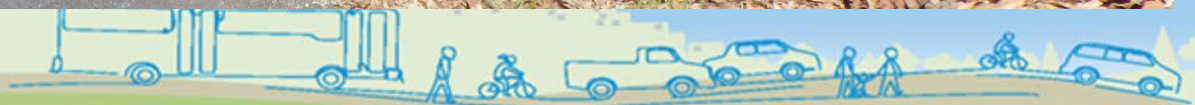
Looking North  
Near Stable Lane



# MacArthur Blvd: Existing Conditions (Cont'd)



Looking North  
Near Whiterim Drive





# MacArthur Blvd: Existing Conditions (cont'd)



Looking North  
Near Belfast Lane





# MacArthur Blvd: Existing Conditions (Cont'd)



Looking South  
Falls Road Intersection



# Project Scope

## Planned Facilities

- Paved, ADA compliant, 10' wide Shared Use Path
- Crosswalks and Signage
- Lighting
- Connection to Planned and Existing Facilities





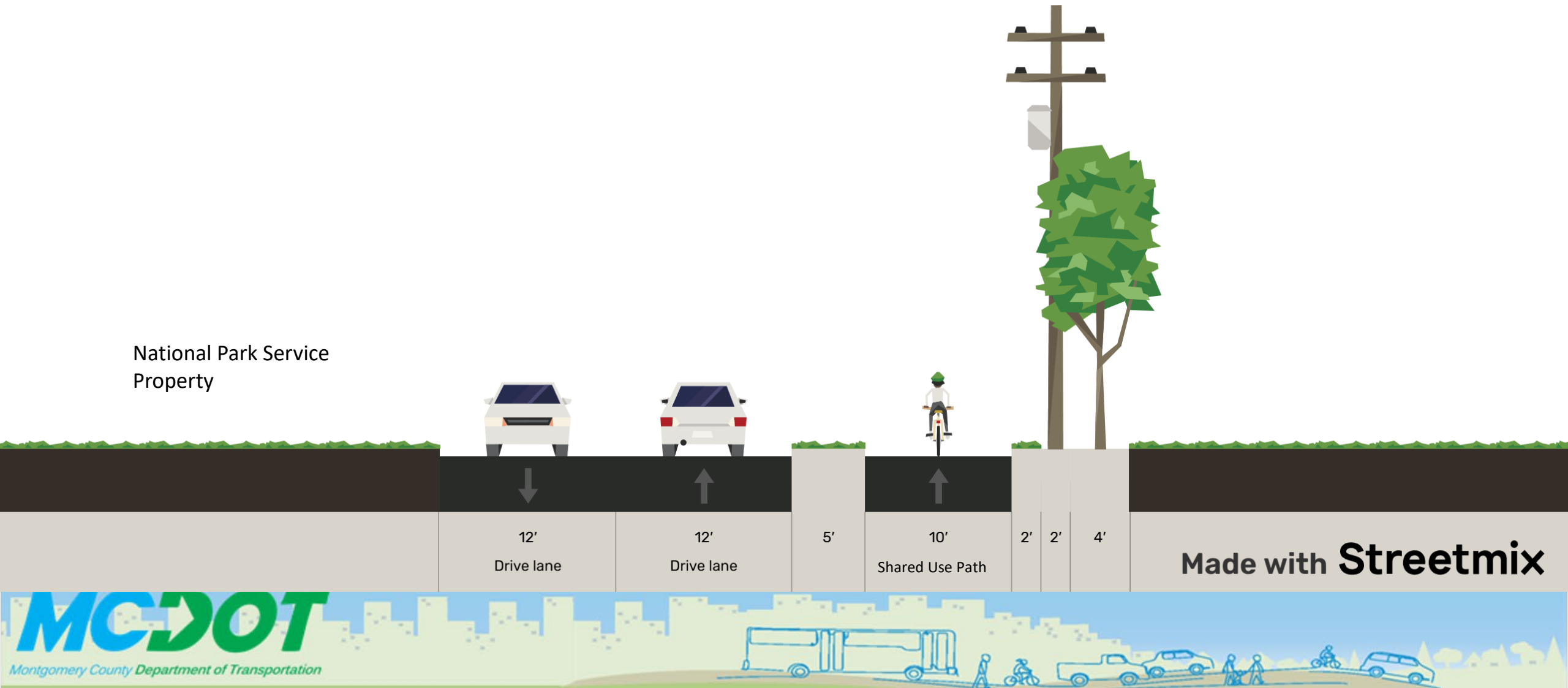
# Stakeholders

- Community
- MDOT SHA
- M-NCPPC-Parks Development
- Department of Permitting Services
- National Park Services





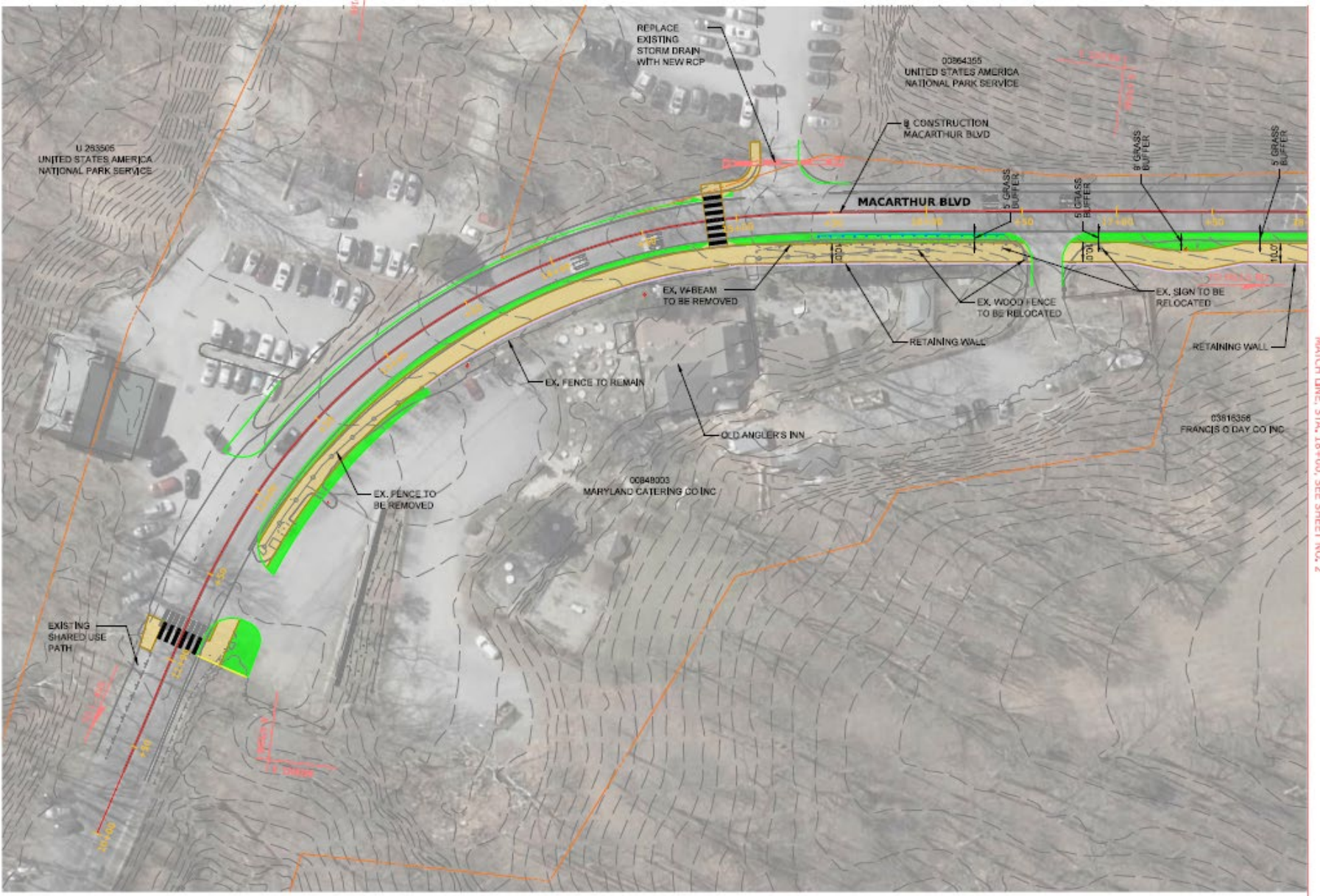
# Typical Section Option 1





# Conceptual Plan

## Option 1



Sheet 1

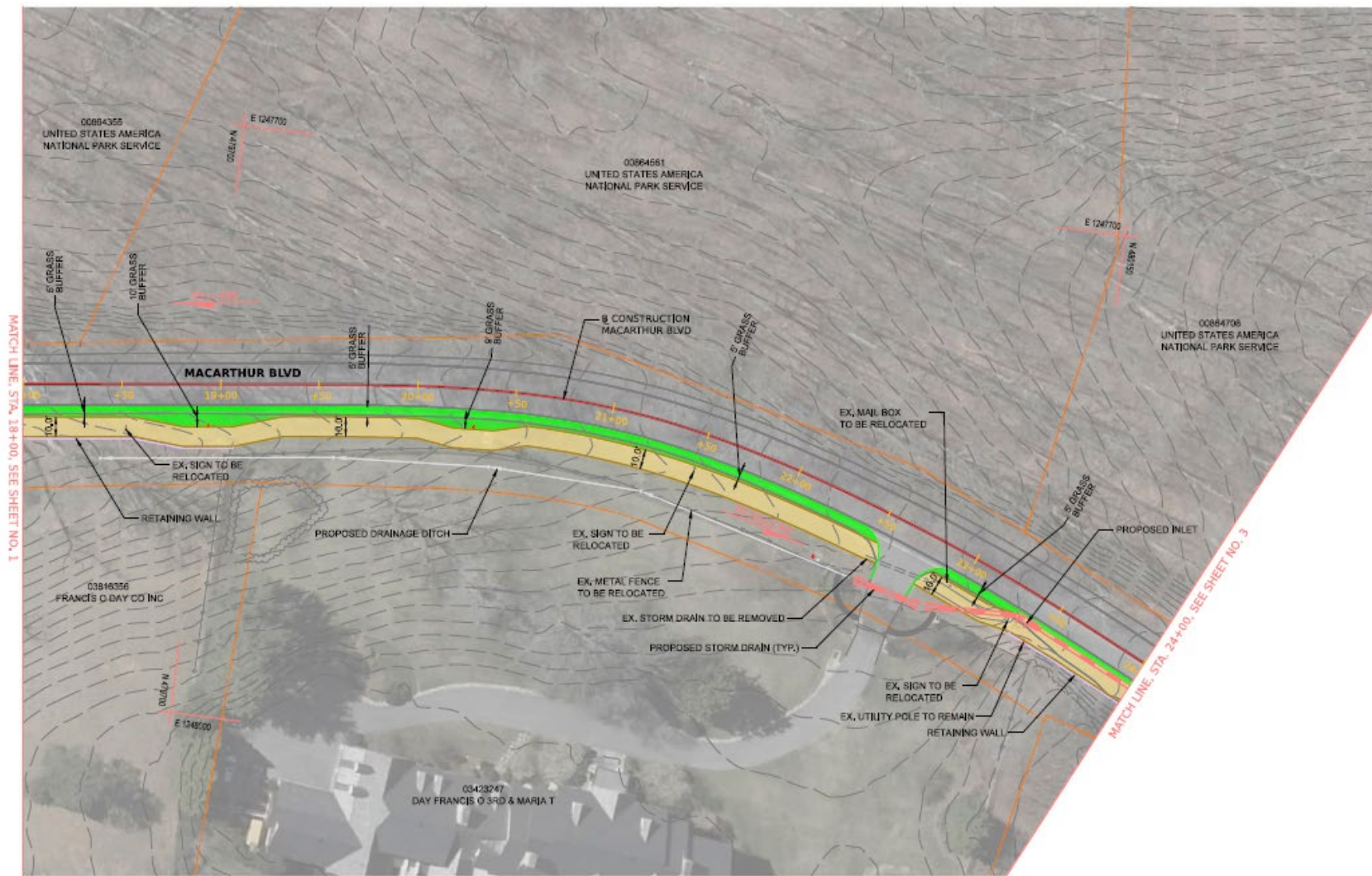
- LEGEND
- TRAVEL SHARED USE PATH
  - GRASS BUFFER
  - CURB AND GUTTER
  - RIGHT OF WAY
  - PROPOSED V-BEAM GUARDRAIL
  - EXISTING CONTOUR
  - EXISTING UTILITY POLE



# Conceptual Plan

## Option 1

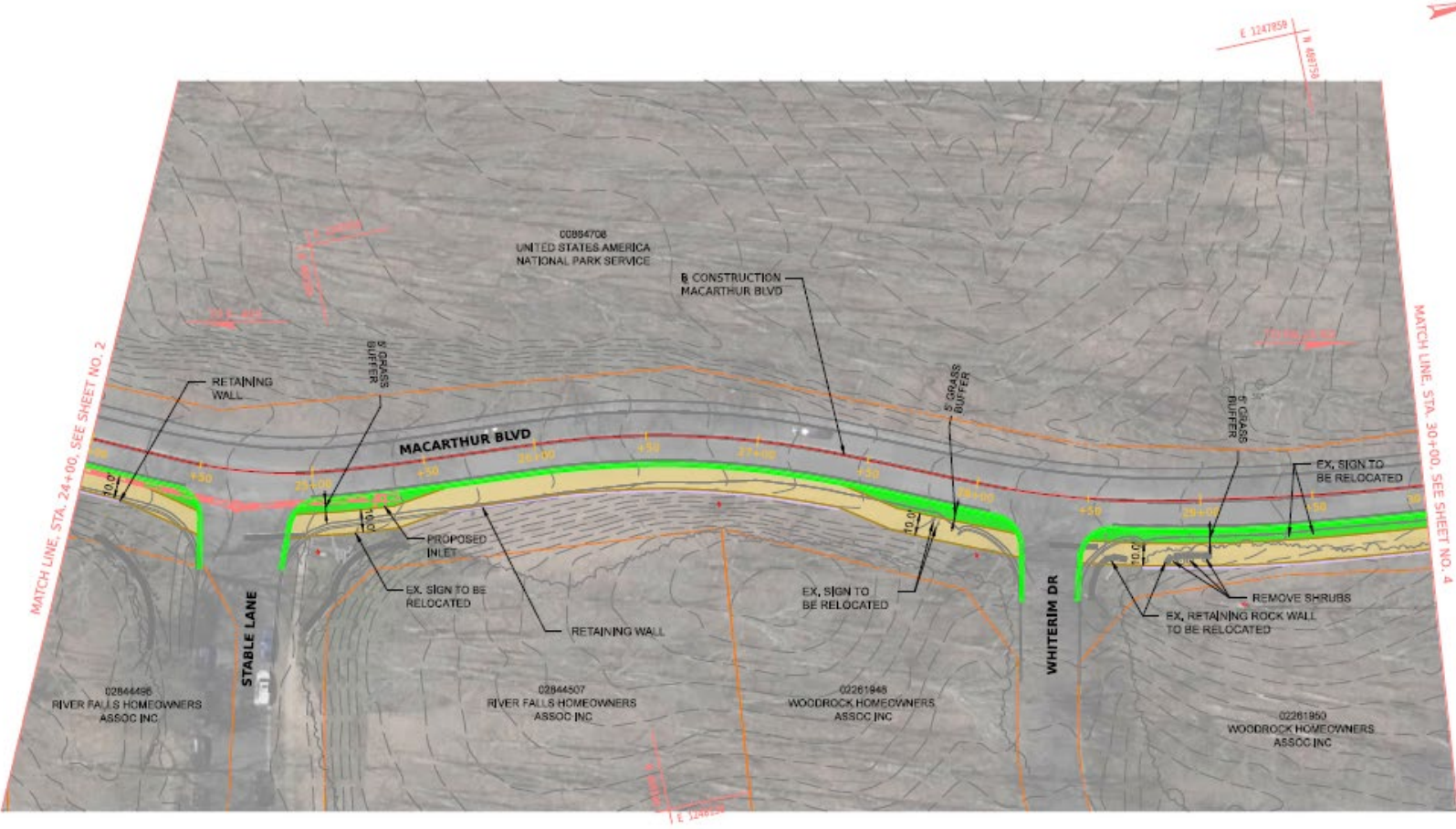
Sheet 2





# Conceptual Plan

## Option 1

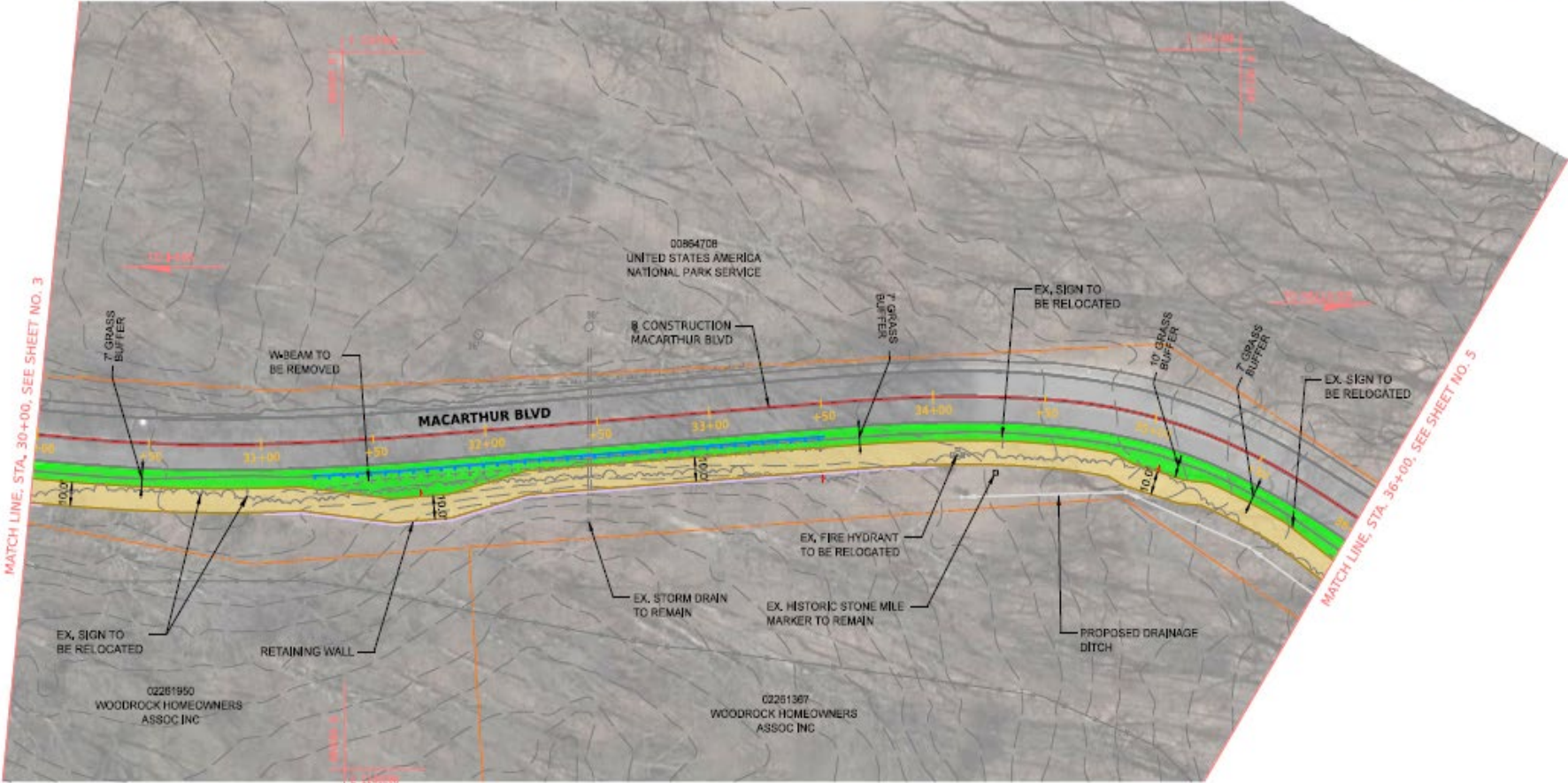


Sheet 3



# Conceptual Plan

## Option 1



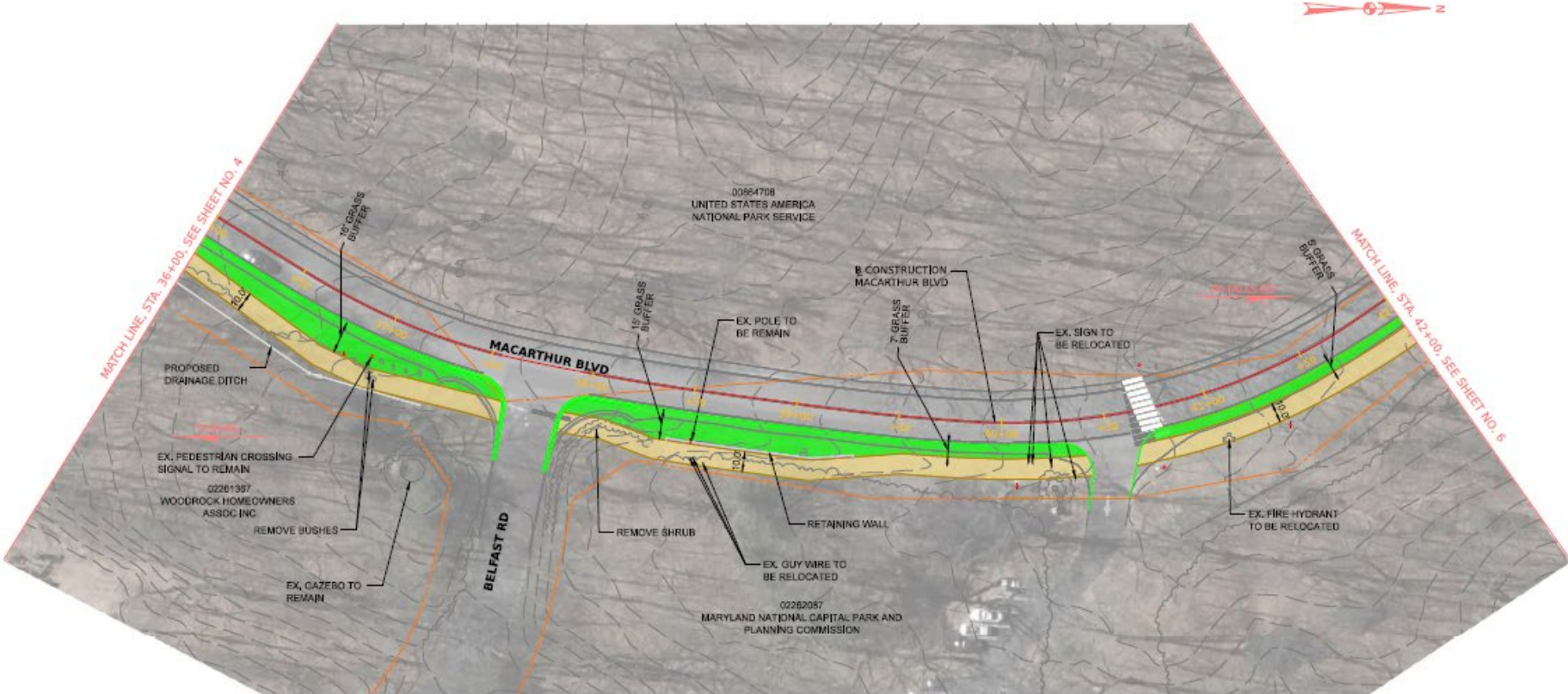
Sheet 4





# Conceptual Plan

## Option 1



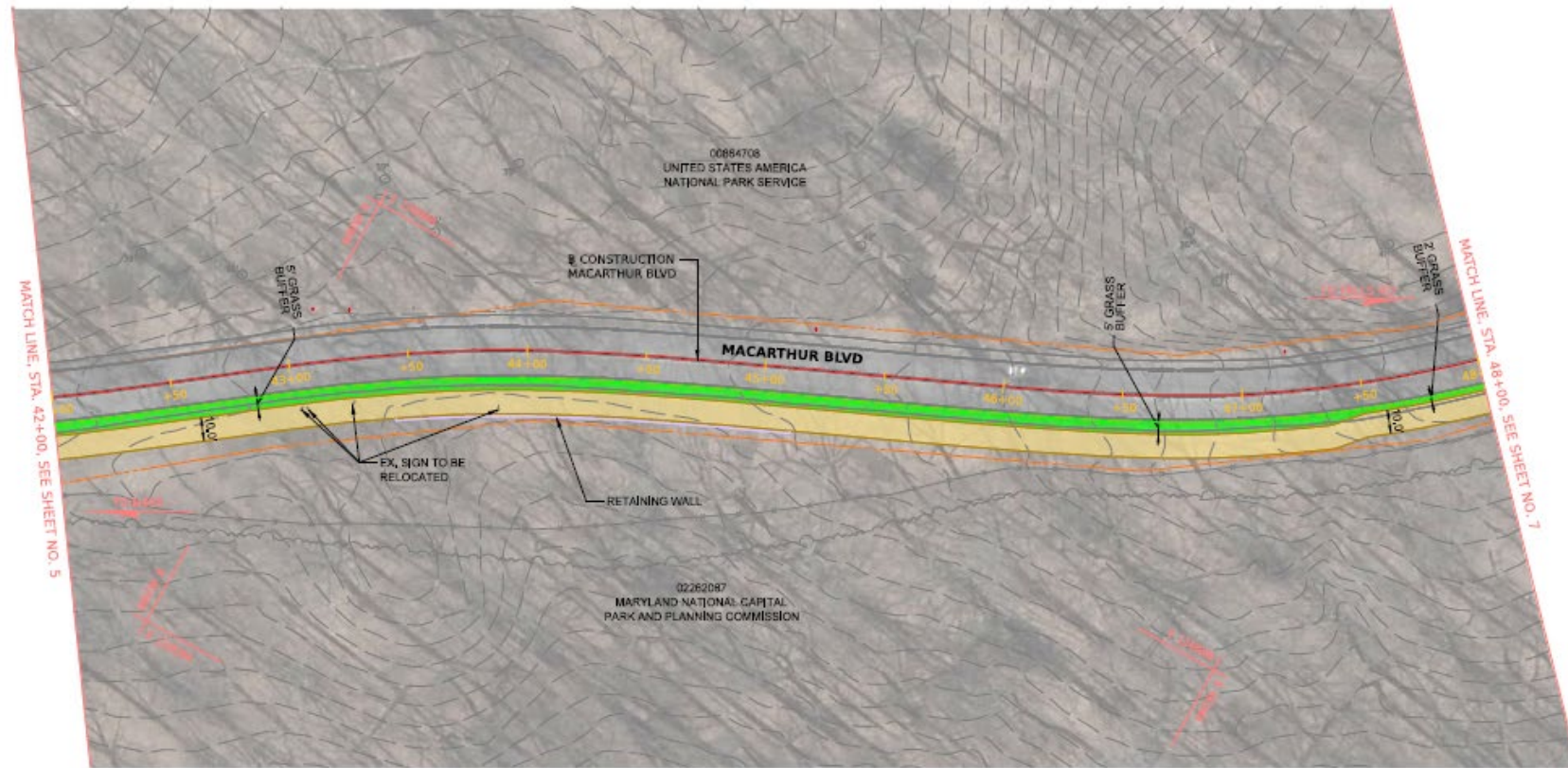
Sheet 5





# Conceptual Plan

## Option 1

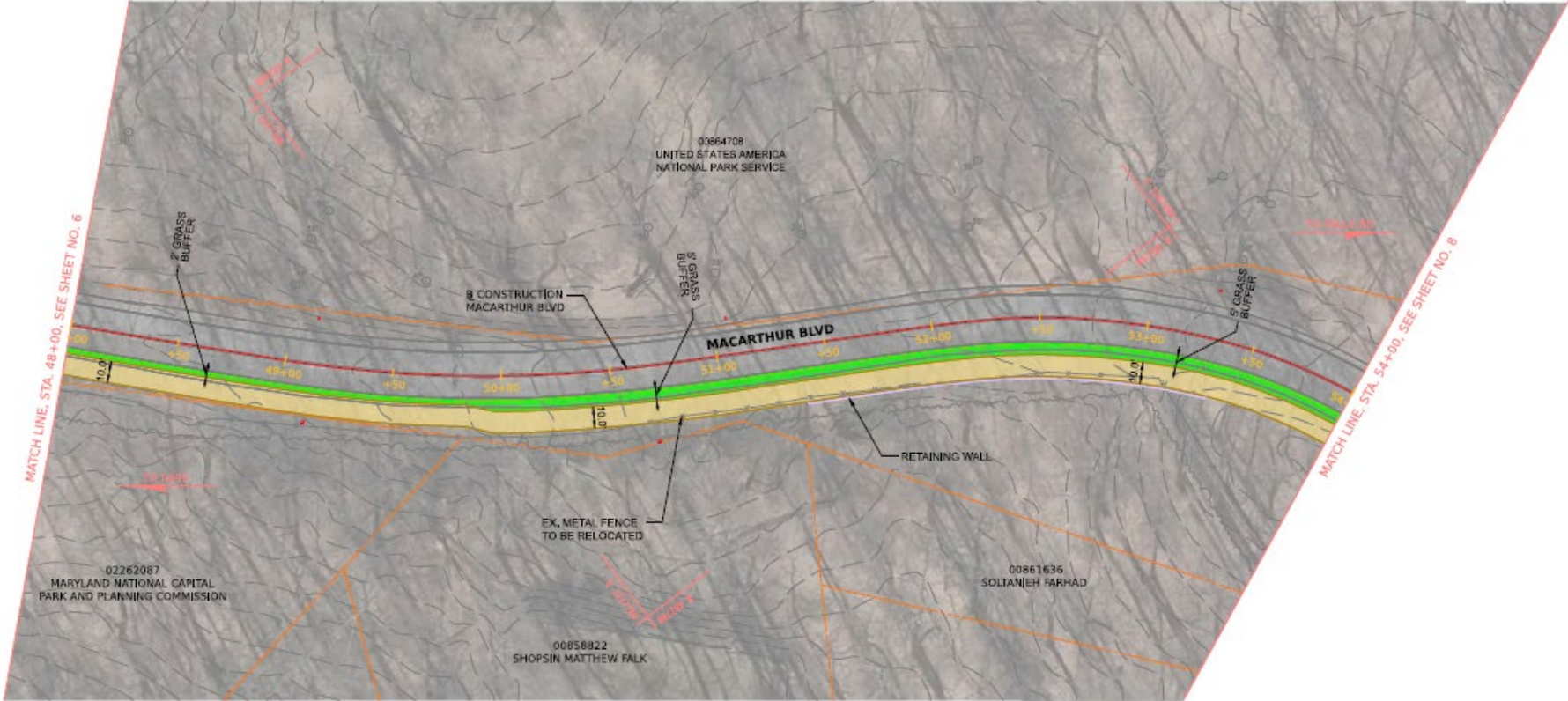


Sheet 6



# Conceptual Plan

## Option 1

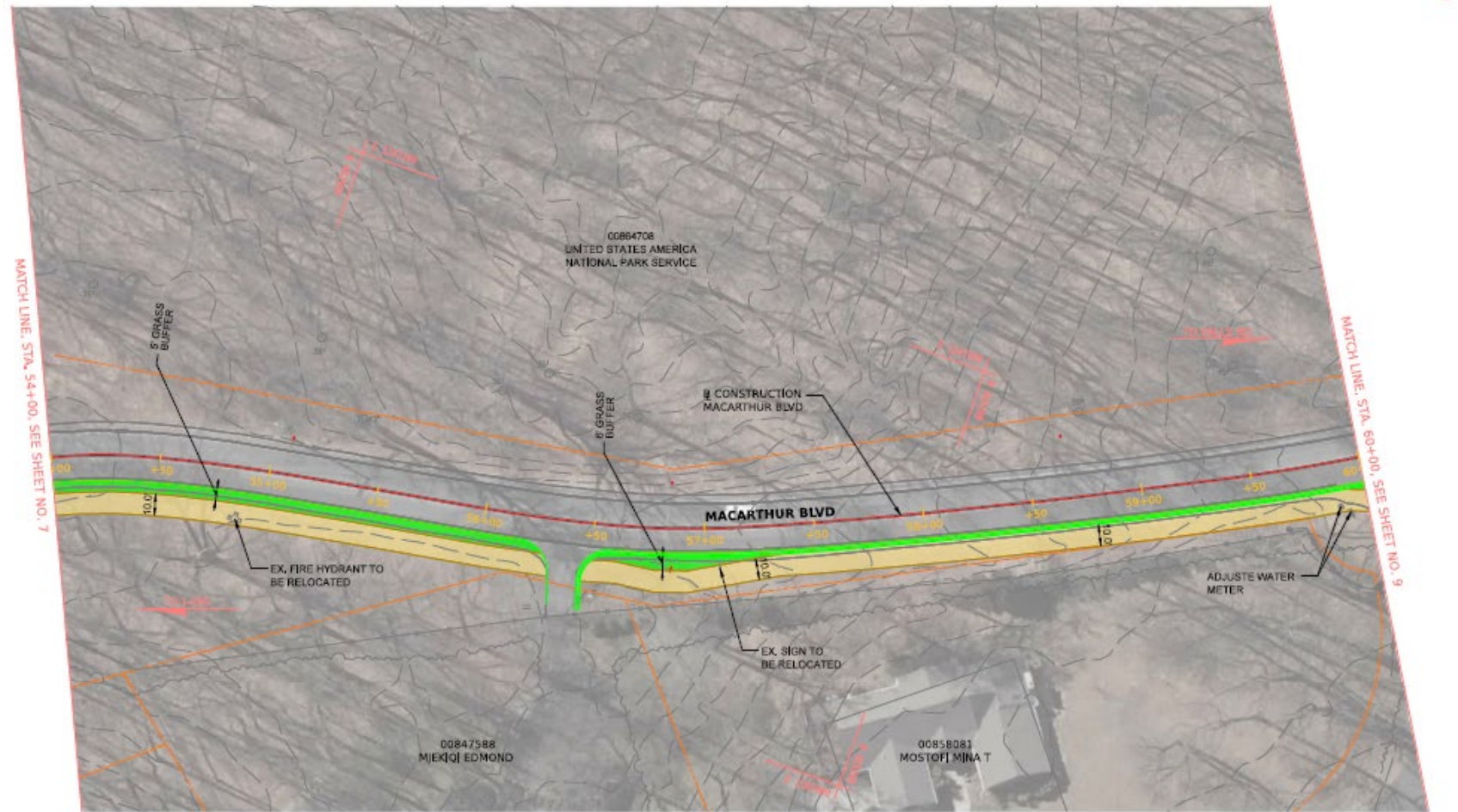


Sheet 7



# Conceptual Plan

## Option 1

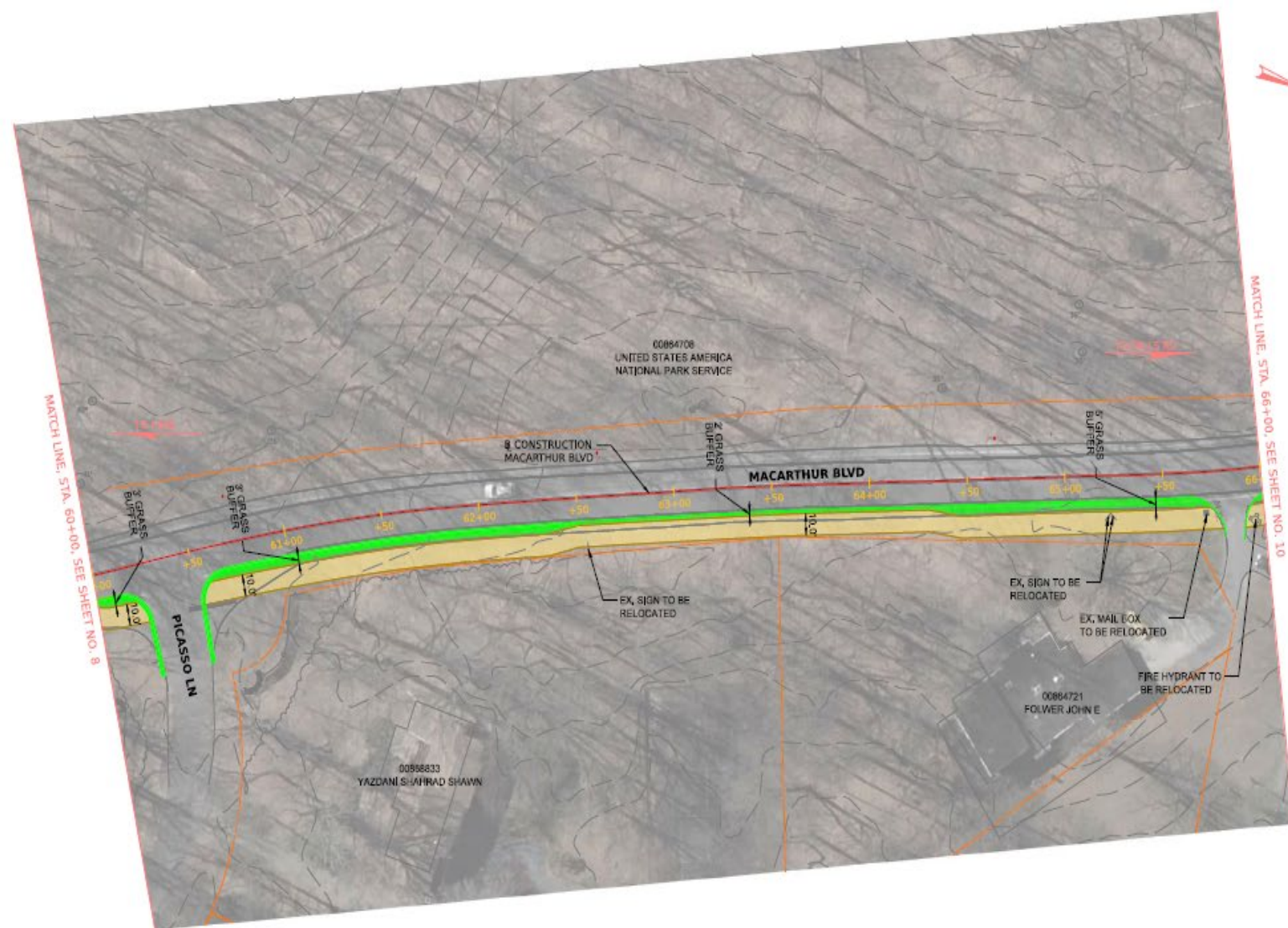


Sheet 8

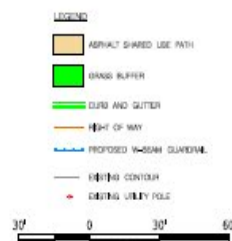


# Conceptual Plan

## Option 1



Sheet 9



MCDOT Facility Plan  
MACARTHUR BOULEVARD  
OLD ANGLER'S  
GREAT FALLS PARK

OPTION 1 -

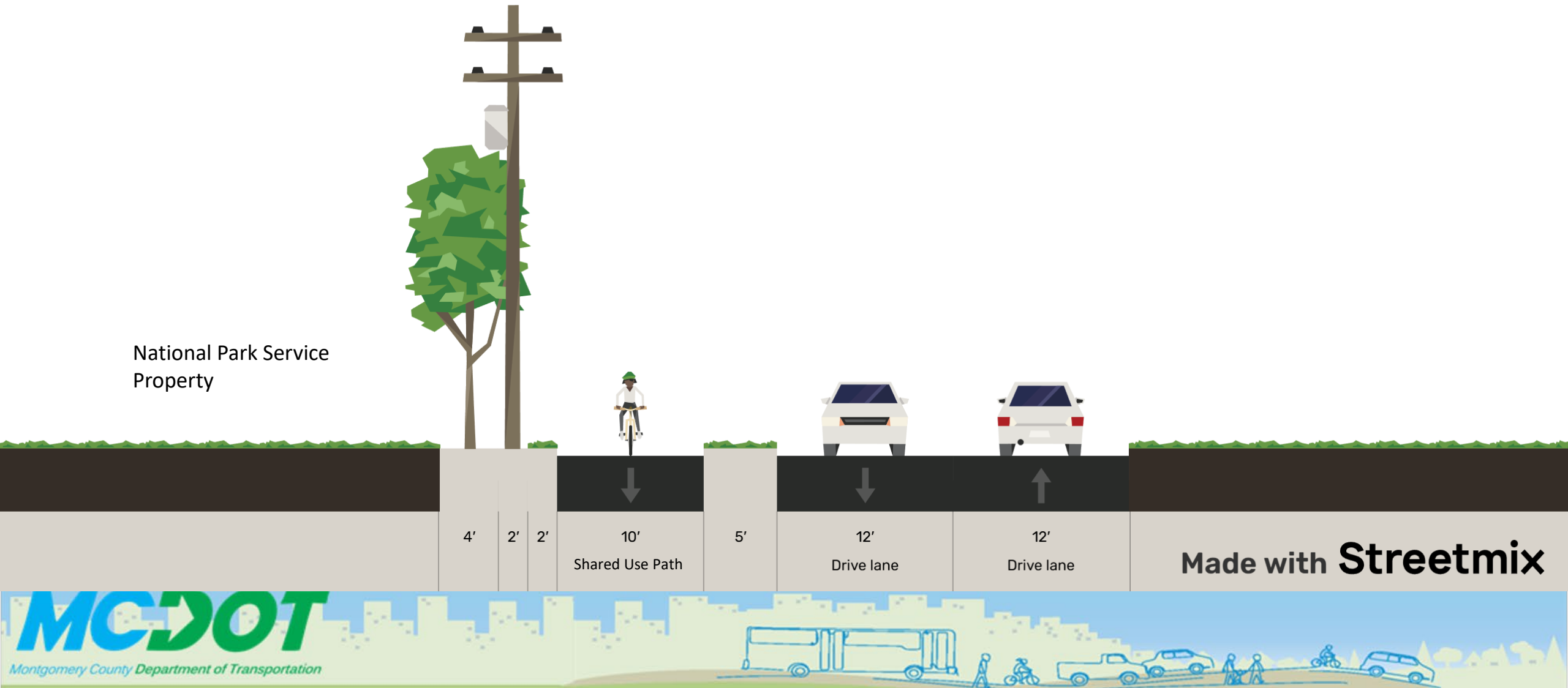
SCALE : 1" = 30'-0"







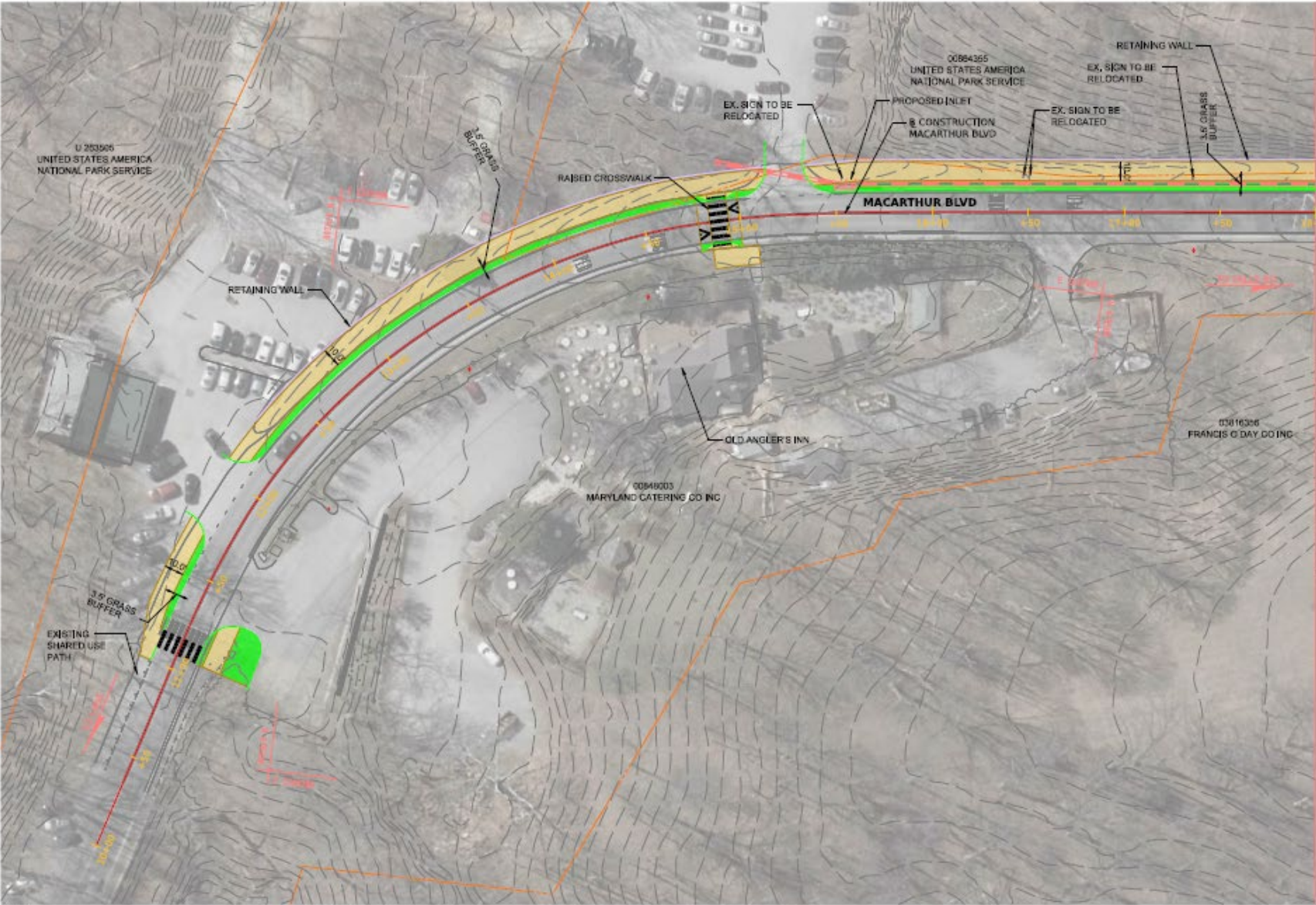
# Typical Section Option 2





# Conceptual Plan

## Option 2



Sheet 1



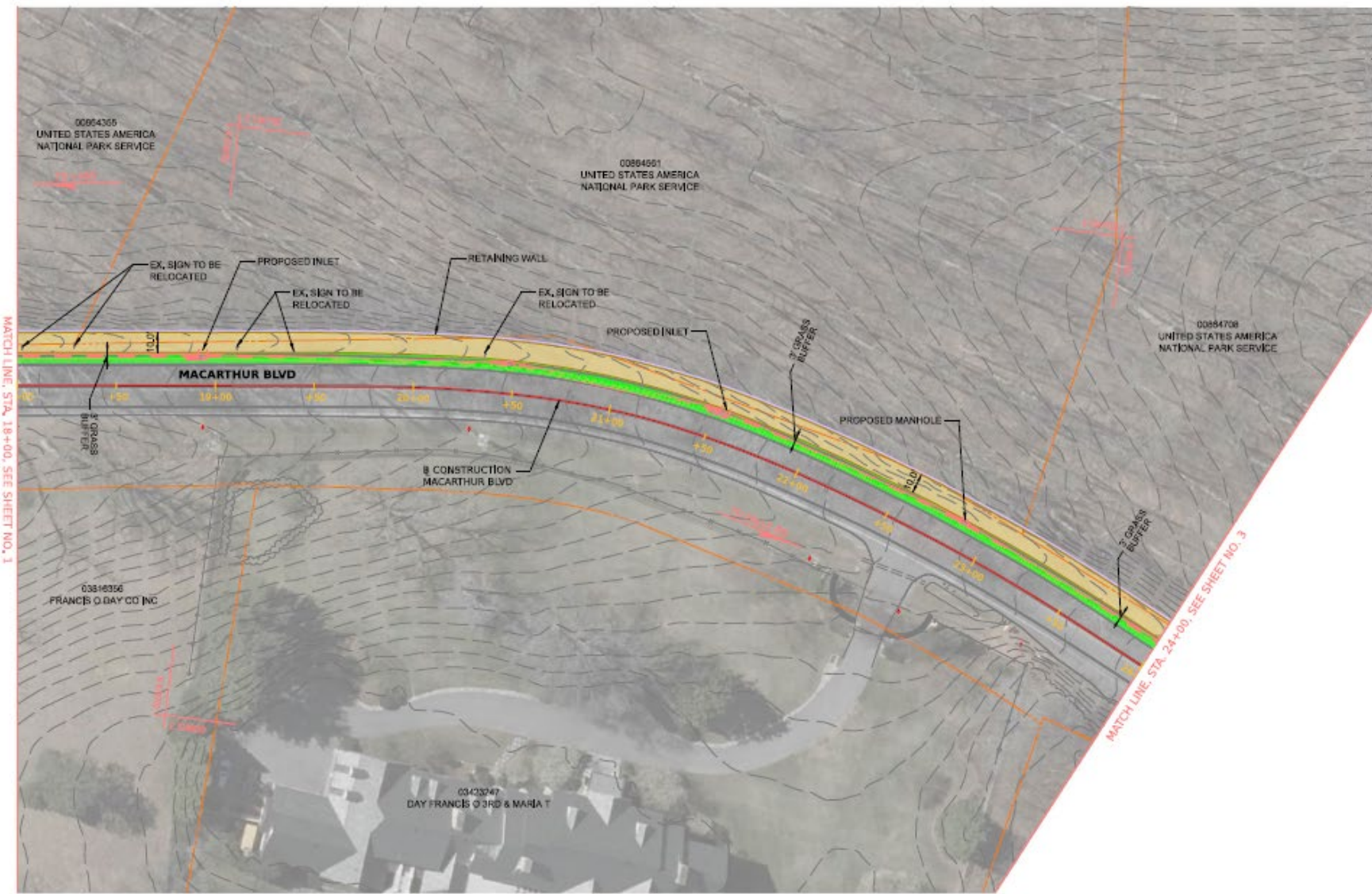
MCDOT  
MACARTHUR BLVD  
OLIVE BRIDGE  
SCALE: 1" = 100'



# Conceptual Plan

## Option 2

Sheet 2

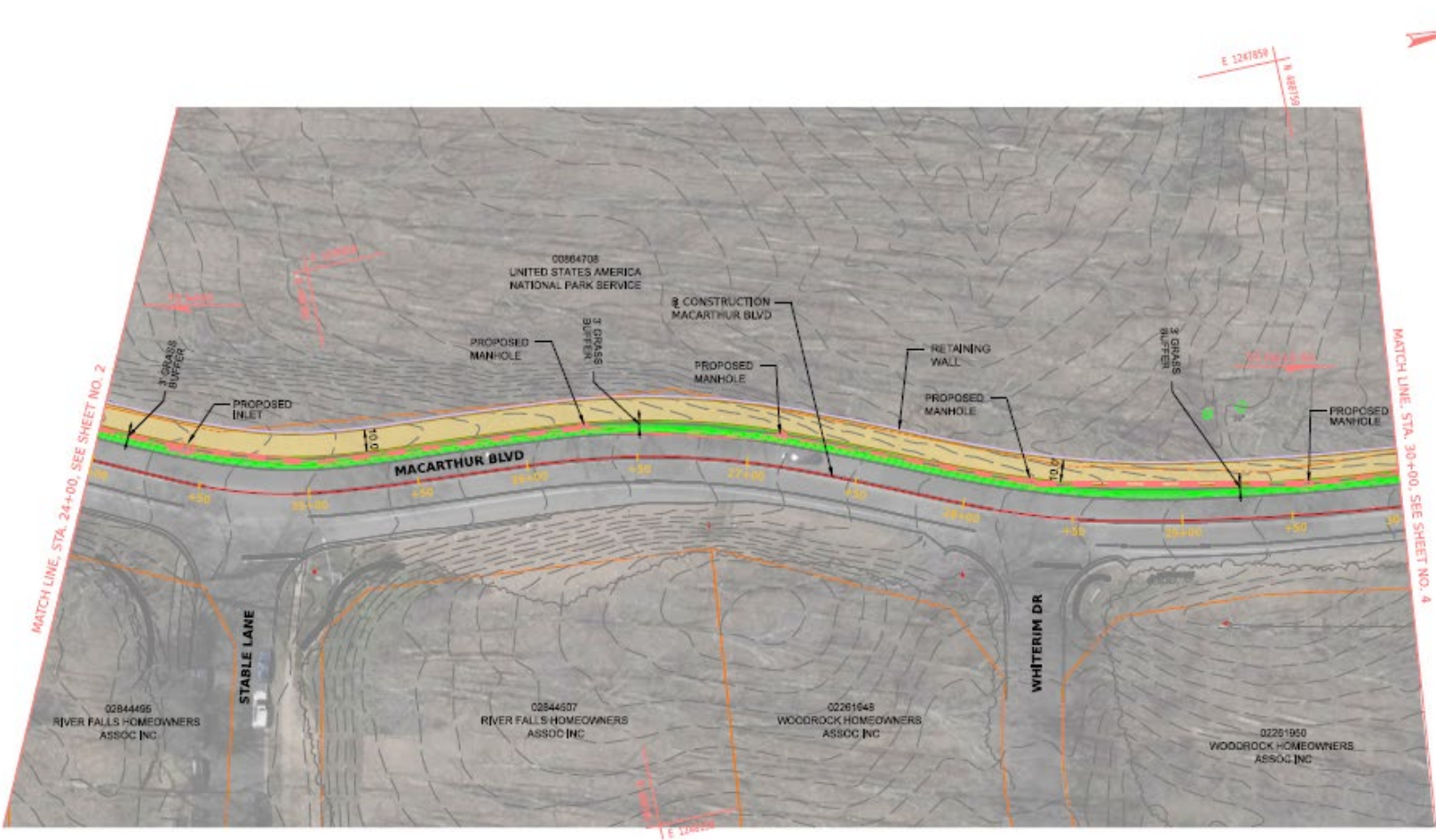


MCDOT Facility  
MACARTHUR BOULEVARD  
OLD ANGLER ROAD  
GREAT FALLS PARK  
OPTION 2  
SCALE : 1" = 30'-0"




# Conceptual Plan

## Option 2



Sheet 3



Montgomery County Department of Transportation

**LEGEND**

- ASPHALT SHARED USE PATH
- GRASS BUFFER
- CURB AND GUTTER
- RIGHT OF WAY
- PROPOSED INSTREAM OBSTRUCTION
- EXISTING CONTOUR
- EXISTING UTILITY POLE
- TRAIL OF EXISTING AND PROPOSED
- PROPOSED STORM DRAIN

SCALE: 1" = 30'



MERCADO CONSULTANTS, INC.

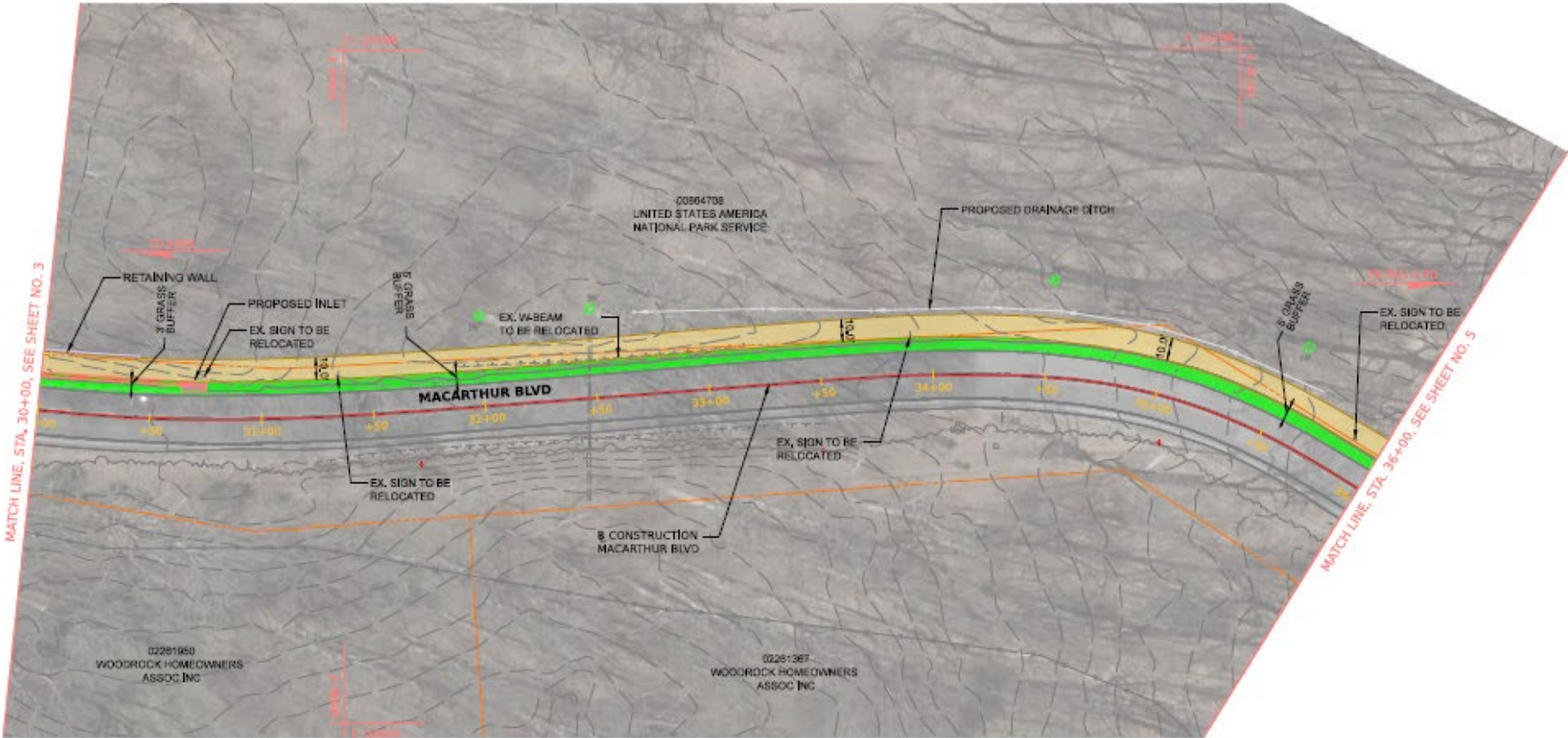
MCDOT  
MACARTHUR  
OLD  
GREAT

SCALE: 1" = 30'

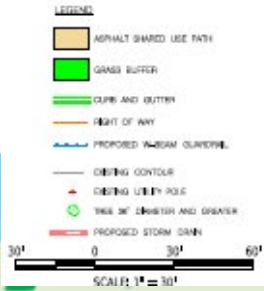


# Conceptual Plan

## Option 2



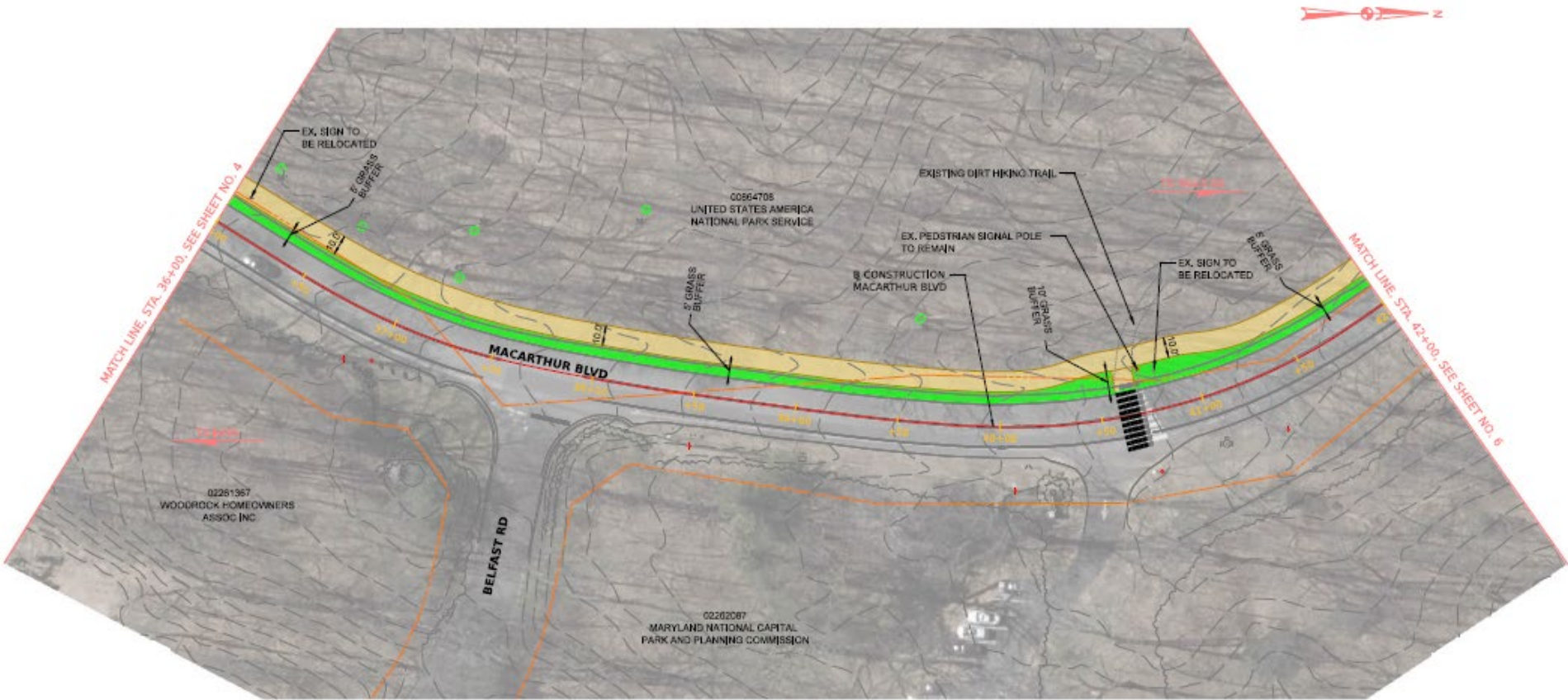
Sheet 4





# Conceptual Plan

## Option 2



Sheet 5



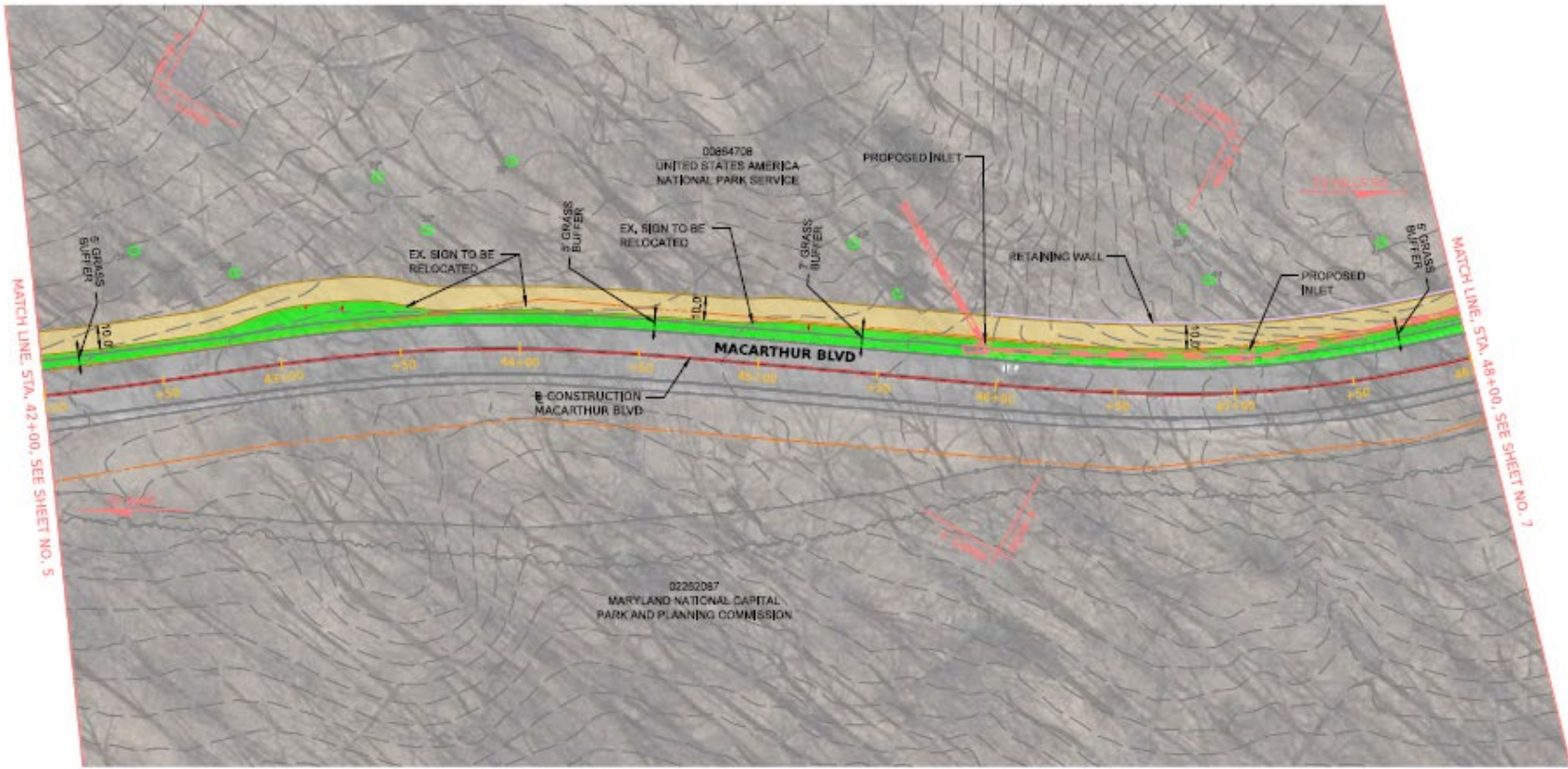
MERCADO  
CONSULTANTS, INC.

MCDOT  
MACARTHUR  
OLD  
GREAT F  
O  
SCALE : 1" =

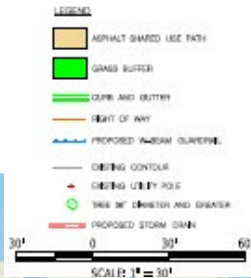




## Option 2



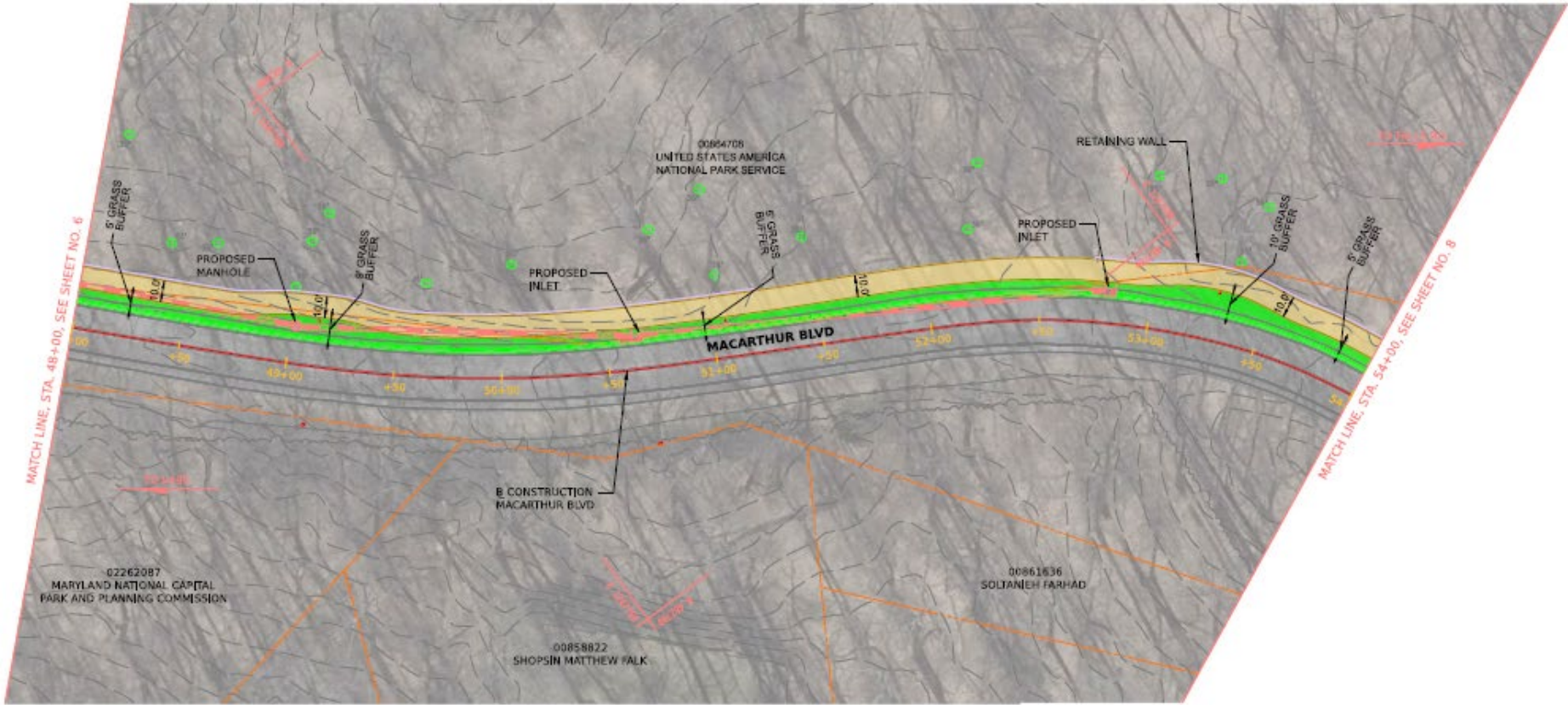
Sheet 6





# Conceptual Plan

## Option 2



Sheet 7



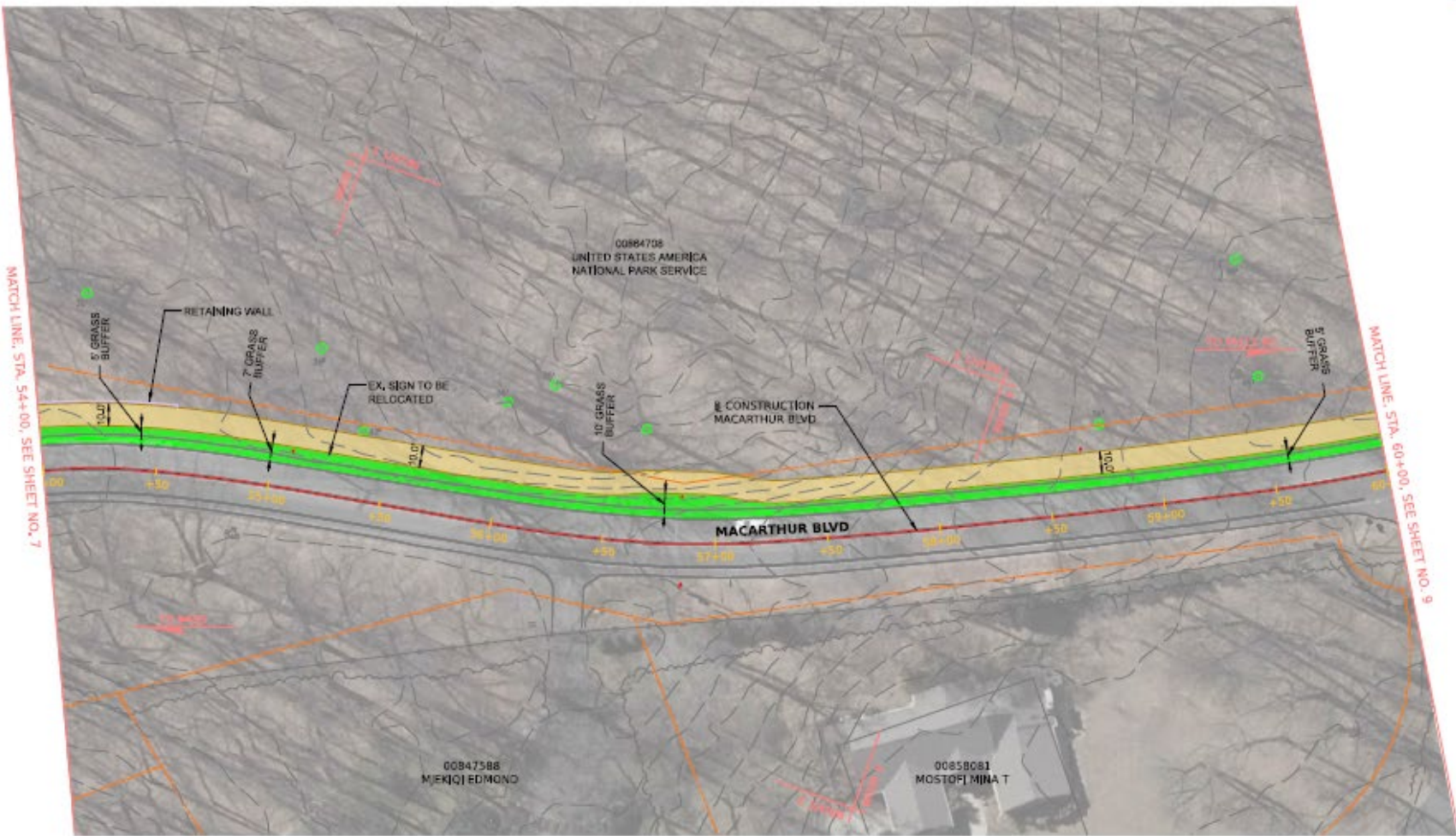
MC  
MACA  
C  
GRE  
SCALE :



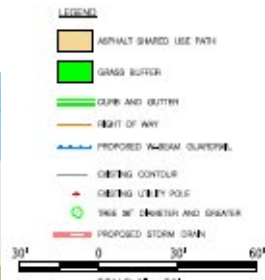


# Conceptual Plan

## Option 2

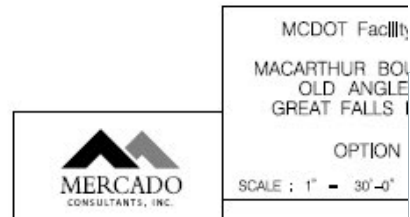
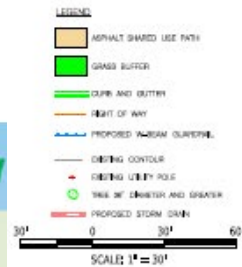


Sheet 8





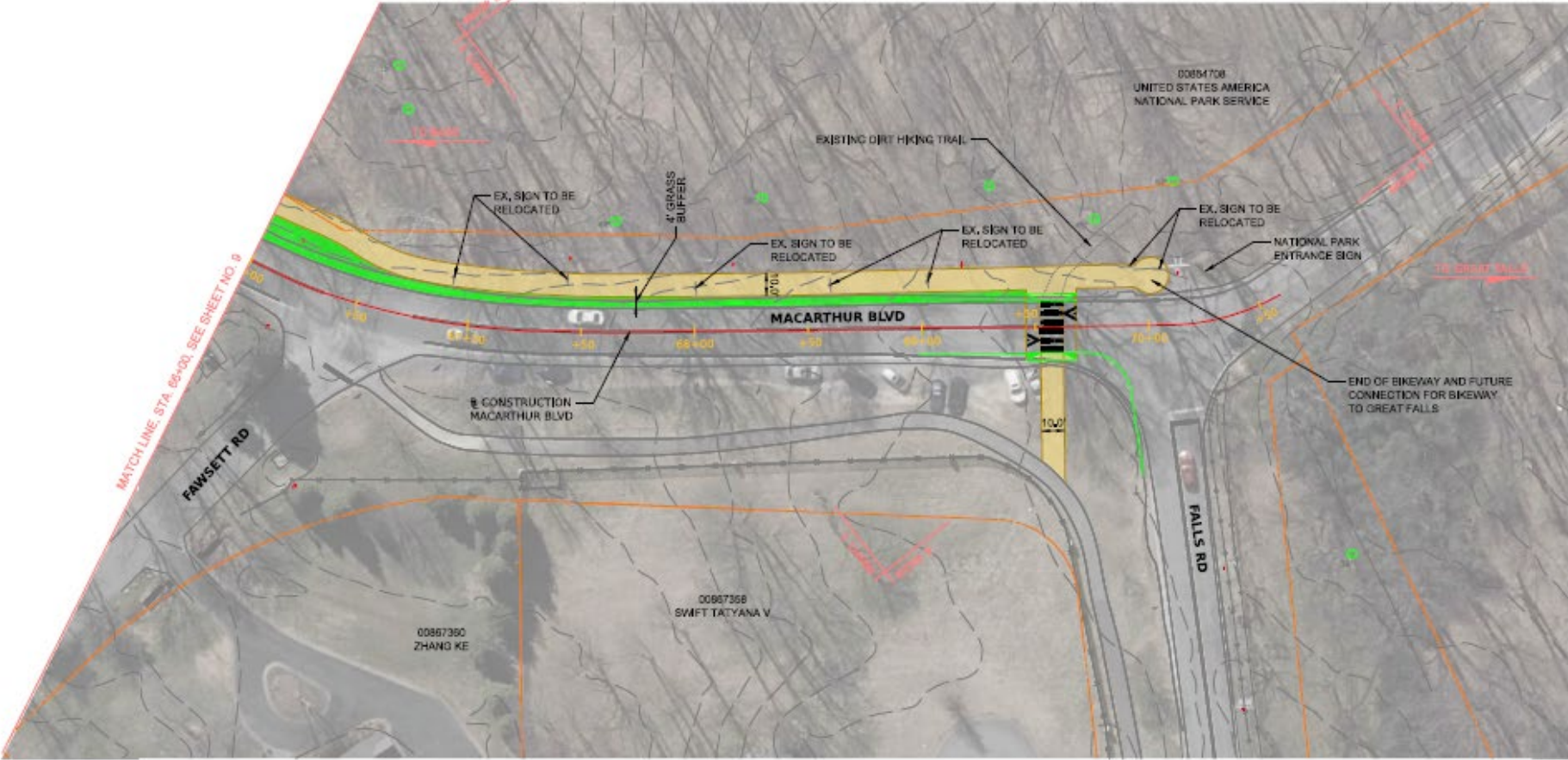
## Sheet 9





# Conceptual Plan

## Option 2



Sheet 10





# Next Steps

We Are Here!

Facility Planning Phase I

Summer 2026

- Collect data, obtain public input, develop preferred alternatives.
- Planning Board Briefing, and presentation to the Transportation and Environment Committee (T&E).

Facility Planning Phase II

- Develop preliminary (35% level of completion) design plans, and cost estimates. (Not Funded)
- Host second Public Meeting and Mandatory Referral hearing.

Final Design

- Begin Construction Drawings Development/Design (Not Funded)

Construction

- Design Completion & Construction (Not Funded)





# Project Cost Estimate

Option 1 – Shared Use Path on the East Side	Option 2 – Shared Use Path on West Side (NPS Property)
Planning, Design, & Supervision Cost = \$700K	Planning, Design, & Supervision Cost = \$700K
Land Acquisition Cost = \$500K	Land Acquisition Cost = \$400K
Utility Relocation = \$50K	Utility Relocation = \$50K
Construction Cost = \$1.7M	Construction Cost = \$2.8M
Approx. Total = \$3M	Approx. Total = \$4M





# Questions & Comments

Cameron McAllister

➤ [Cameron.McAllister@montgomerycountymd.gov](mailto:Cameron.McAllister@montgomerycountymd.gov)

➤ **Project Website**

➤ <https://www.montgomerycountymd.gov/dot-dte/projects/MacArthurBlvdBikeway/index.html>

➤ **Comment here**

➤ <https://forms.office.com/g/Yc6G6q5ddk?origin=prLink>

COMMENT FORM



PROJECT WEBSITE

