

N:\3168-010\CADD\Phase 2\2-3168101012-98_2.dwg No. 1.dgn
3/4/2025

MOT LEGEND

SINGLE POST SIGN

DOUBLE POST SIGN

TYPE III BARRICADE

PLASTIC DRUM

DIRECTION OF TRAVEL

TEMPORARY PAVEMENT MARKING

ARROW PANEL

PRECAST TEMPORARY 32 INCH F SHAPE CONCRETE TRAFFIC BARRIER

SAND-FILLED PLASTIC BARRELS (40 MPH DESIGN SPEED)

SAND-FILLED PLASTIC BARRELS (25 MPH DESIGN SPEED)

TYPE E END TREATMENT (30 MPH DESIGN SPEED)

A

5" SOLID WHITE PAVEMENT MARKING PAINT

B

5" SOLID YELLOW PAVEMENT MARKING PAINT

C

5" SOLID WHITE PAVEMENT MARKING PAINT (3' LINE 9' GAP)

D

REMOVABLE PREFORMED SYMBOLS

E

15" SOLID WHITE PAVEMENT MARKING PAINT

F

5" SOLID WHITE PAVEMENT MARKING PAINT (3' LINE, 3' GAP)

G

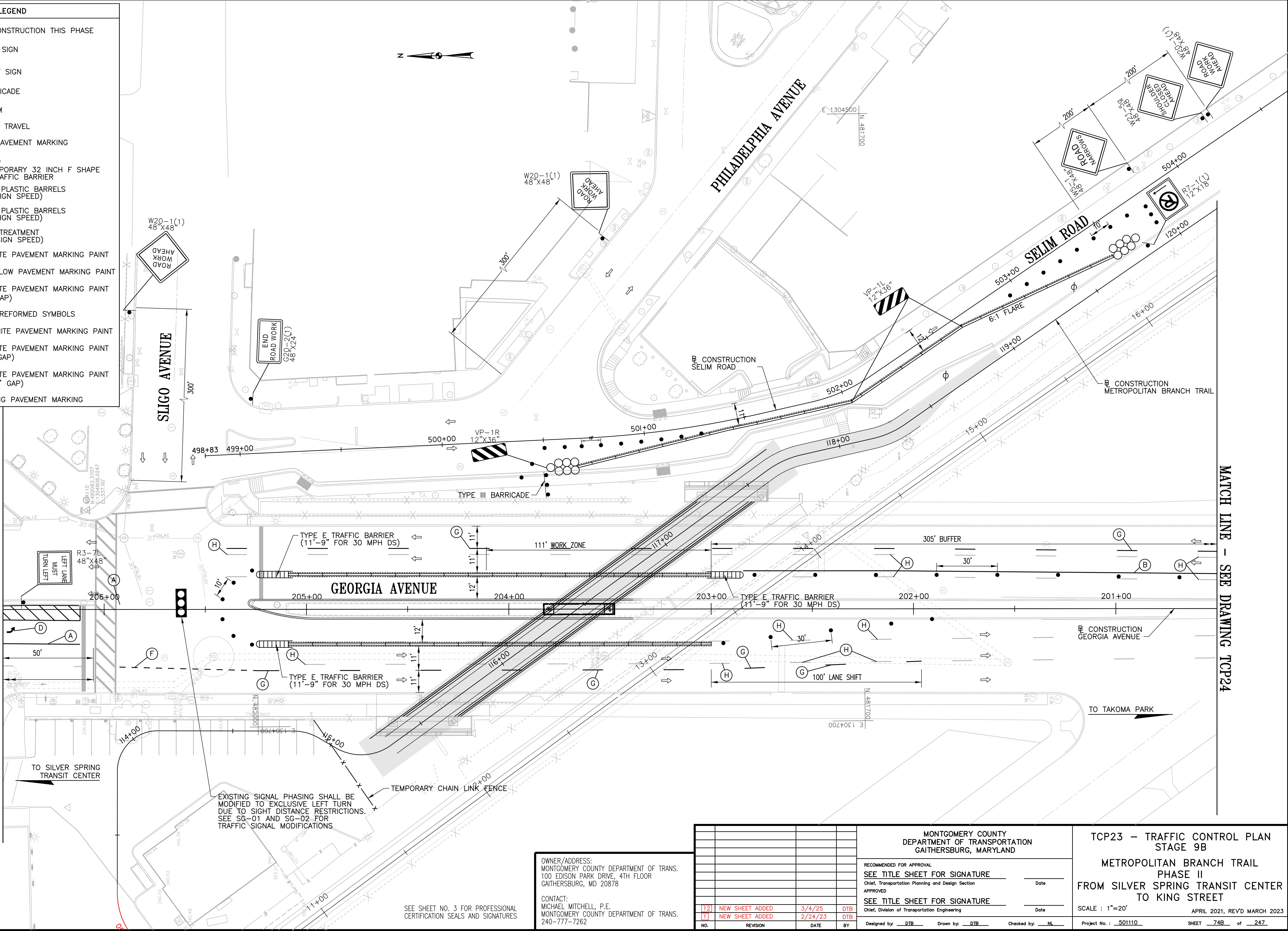
5" SOLID WHITE PAVEMENT MARKING PAINT (10' LINE, 30' GAP)

H

GRIND EXISTING PAVEMENT MARKING

MATCH LINE - SEE DRAWING TCP22

MATCH LINE - SEE DRAWING TCP24



OWNER/ADDRESS:
MONTGOMERY COUNTY DEPARTMENT OF TRANS.
100 EDISON PARK DRIVE, 4TH FLOOR
GAITHERSBURG, MD 20878

CONTACT:
MICHAEL MITCHELL, P.E.
MONTGOMERY COUNTY DEPARTMENT OF TRANS.
240-777-7262

SEE SHEET NO. 3 FOR PROFESSIONAL
CERTIFICATION SEALS AND SIGNATURES

NO.	REVISION	DATE	BY
[12]	NEW SHEET ADDED	3/4/25	DTB
[1]	NEW SHEET ADDED	2/24/23	DTB

MONTGOMERY COUNTY
DEPARTMENT OF TRANSPORTATION
GAITHERSBURG, MARYLAND

RECOMMENDED FOR APPROVAL

SEE TITLE SHEET FOR SIGNATURE

Chief, Transportation Planning and Design Section

APPROVED

SEE TITLE SHEET FOR SIGNATURE

Chief, Division of Transportation Engineering

Date

Date

Designed by: DTB

Drawn by: DTB

Checked by: NL

TCP23 - TRAFFIC CONTROL PLAN
STAGE 9B

METROPOLITAN BRANCH TRAIL
PHASE II
FROM SILVER SPRING TRANSIT CENTER
TO KING STREET

SCALE : 1"=20'

APRIL 2021, REV'D MARCH 2023

Project No. : 501110

SHEET 74B of 247

