

# NORTH HIGH STREET EXTENSION – FACILITY PLANNING STUDY

VIRTUAL PUBLIC MEETING

SEPTEMBER 30, 2020







# Welcome to the virtual public meeting!

- We are all learning how to conduct virtual community meetings, please bear with us
- We are going to go over some basic controls to help you use the Zoom meeting format before we start the presentation.
- Please note that this meeting is being recorded.
  - The video will be posted on the project website after the meeting
  - If you do not wish to have your voice or likeness recorded, please keep your camera off, and refrain from asking questions using the audio option. Instead, you can send your questions via the chat option.



# Using Zoom

## ➤ Muting

- Everyone is on mute. You cannot unmute yourself. We can unmute you during the Q&A time.
- To request to speak, you will need to use the **raise hand** feature. Once we unmute you, you may still need to click a pop-up menu to unmute yourself.
- If you have called in by phone, you can unmute yourself by dialing \*6 once we unmute you.





# Using Zoom

## ➤ Video

- Your camera is off by default. To ensure adequate bandwidth for this meeting, we request that you please keep your camera off during the meeting.







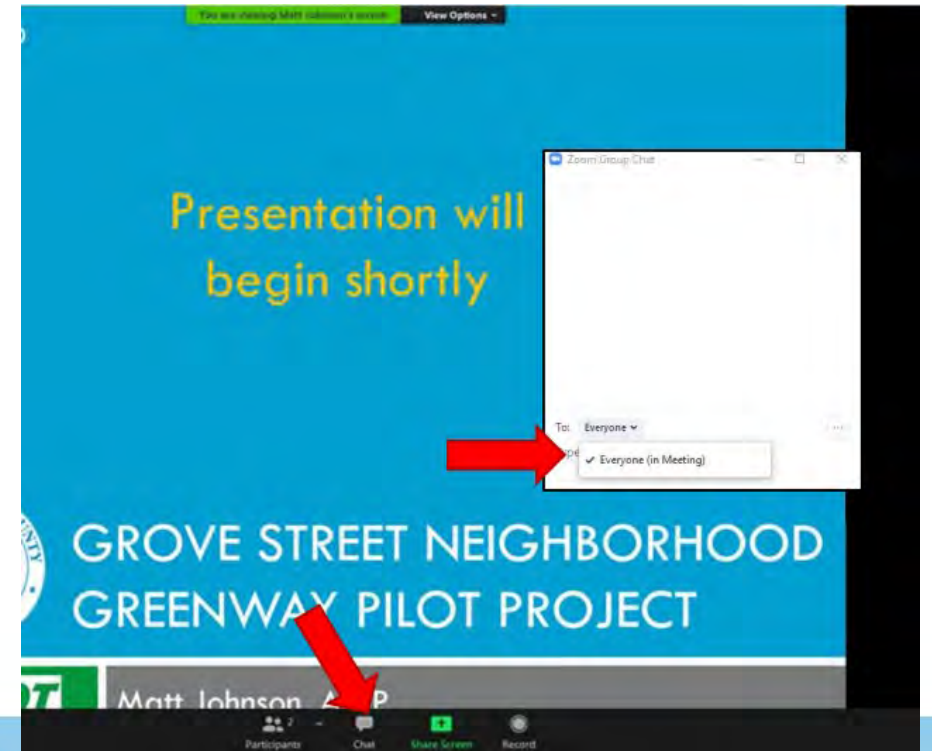
# Using Zoom

## ➤ Ask a question (text)

- If you have a questions during the presentation, please sent it via **chat**.

### To send a chat:

- ❑ Click “chat” at the bottom of the menu
- ❑ In the “to” field, change the drop down to “Corey Pitts”
- ❑ Type your question and send it







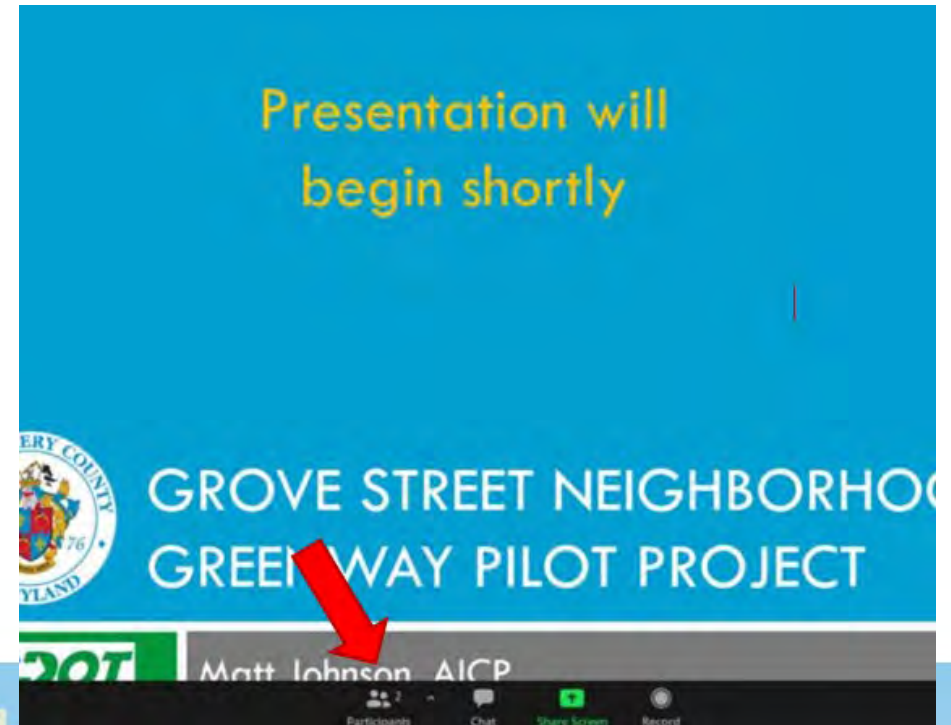
# Using Zoom

## ➤ Ask a question (raise your hand)

- If you'd like to speak to ask a question or make a comment, please **raise your hand**.

### To raise your hand:

- ❑ Click “participants” at the bottom menu
- ❑ Click the blue “raise hand” button
- ❑ If you’ve dialed in by phone, dial \*9



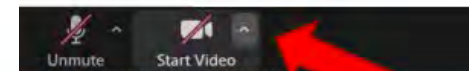
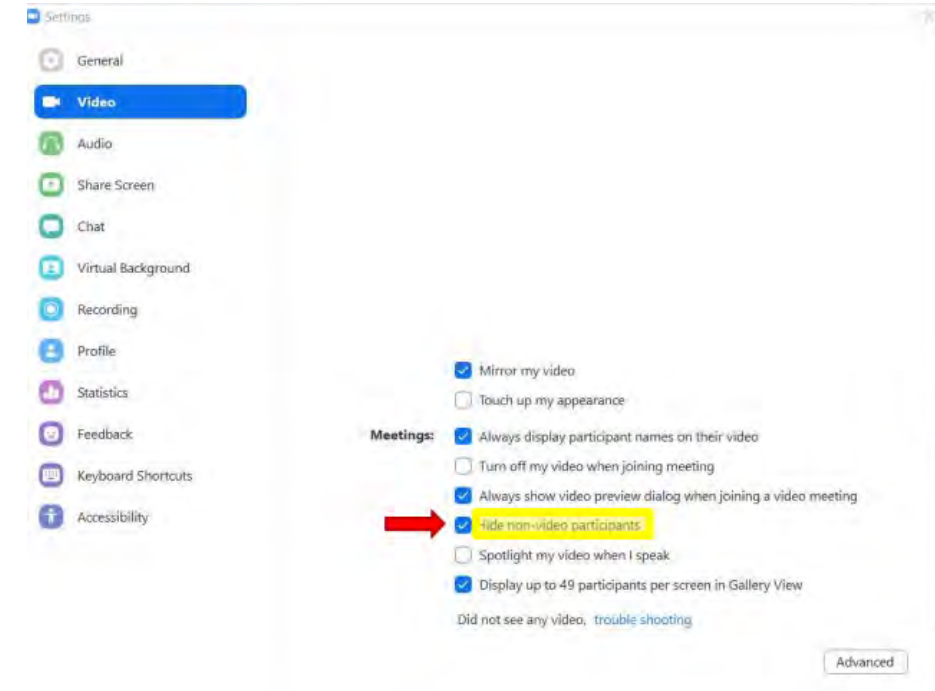


# Using Zoom

## ➤ View

To change your view so that you only see people with cameras on:

- ❑ Click the up arrow next to “start video”
- ❑ Select “video settings”
- ❑ Make sure “Hide non-video participants” is checked





# Introduction





# Outline

- Project Overview
- Design Considerations
- Conceptual Alternatives
- Alternative Analysis
- Next Steps
- Questions / Comments





# Meeting Outcomes

- Share the conceptual alternatives with the community
- Collect feedback from the community
- Answer questions from the community





# Project Overview

## Project Limit – North High Street from Morningwood Drive to Georgia Avenue

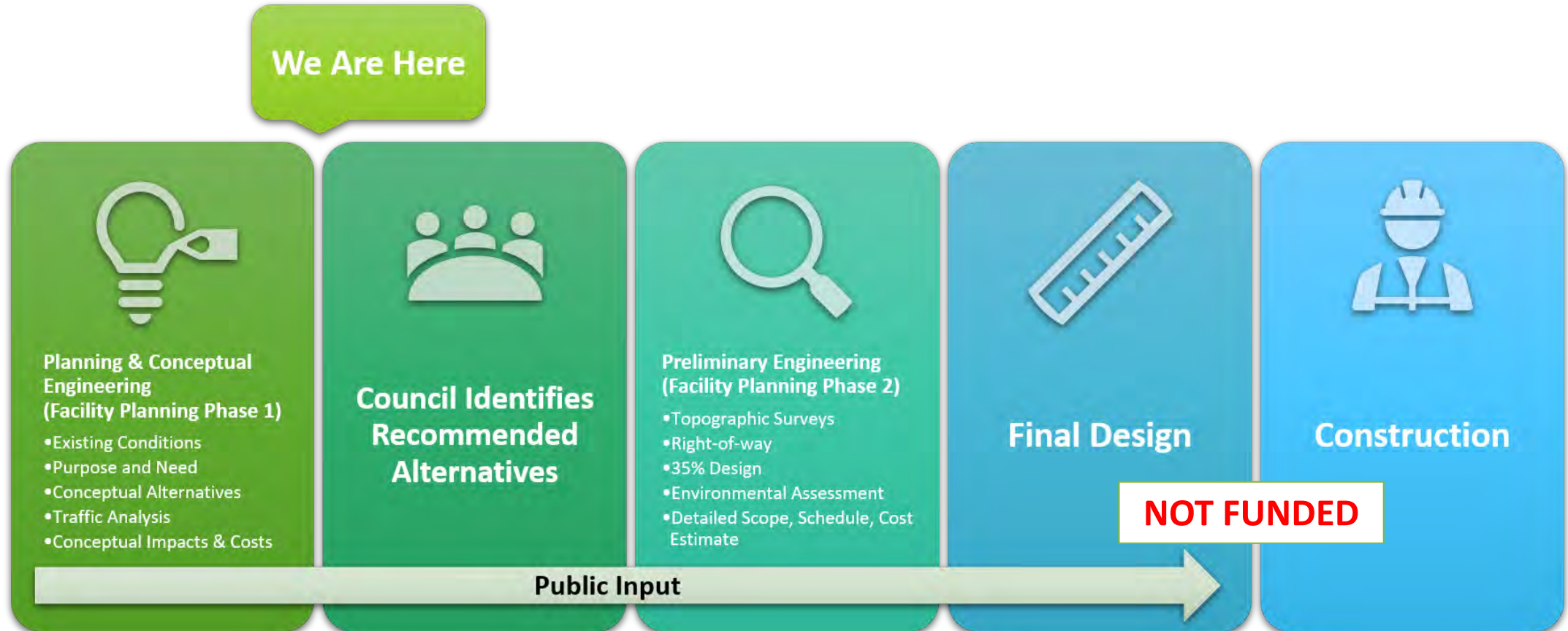
- Scope of study:
  - Extending North High Street to Morningwood Drive
  - Provide pedestrians & cyclists access from Morningwood Drive
  - Identify additional safety improvement needs
- Master Plan recommendation – Olney Master Plan (2005)
- FY20 MCDOT Facility Planning Program
- NOT funded for final design or construction





# Project Overview

## Current Project Milestone Schedule





# Design Considerations

- Safety – All users (Peds, cyclists, drivers)
- Right of Way
- Traffic patterns
- Utility poles and fire hydrant
- Trees
- Drainage & Stormwater Management
- Pavement usage (parking)
- Additional spot improvements within the vicinity of North High Street





# Traffic Impact Analysis

- Existing traffic patterns
  - Traffic movement counts & volume
  - Peak hours: 8-9am and 4-5pm
  - Level of Services (LOS) analysis
- Projected traffic patterns with extension
  - Local network reviews on trip destinations
  - Avg. of 50 vehicles to be diverted onto North High Street during peak hours
  - Minor reduction on turning volume at MD 97/Morningwood intersection
  - No change to volume at MD 97/MD 108 intersection

Intersections	Approach	Existing			
		AM		PM	
		LOS	Delay	LOS	Delay
MD 97 & MD 108	Overall	D	48.7	D	52.2
	EB	D	44.1	D	47.2
	WB	D	37.9	D	51.0
	NB	D	54.4	D	54.1
	Signalized SB	E	59.4	E	59.2
MD 97 & N High Street/ Beuhler Road	Overall	-	-	-	-
	EB	D	25.4	B	12.8
	WB	B	10.6	B	12.5
	NB	A	1.3	A	0.4
	Unsignalized SB	A	0.0	A	0.1
MD 97 & Morningwood Drive/ Spartan Road	Overall	C	33.2	D	49.7
	EB	F	80.8	F	80.9
	WB	E	67.4	E	79.9
	NB	C	21.2	D	44.7
	Signalized SB	C	25.8	D	35.3

**Left: Existing LOS Analysis Summary**

Intersections	Approach	Existing with Diversion			
		AM		PM	
		LOS	Delay	LOS	Delay
MD 97 & MD 108	Overall	D	48.8	D	52.1
	EB	D	44.1	D	47.2
	WB	D	37.9	D	51.0
	NB	D	54.6	D	53.8
	Signalized SB	E	59.4	E	59.2
MD 97 & N High Street/ Beuhler Road	Overall	-	-	-	-
	EB	D	26.7	B	13.5
	WB	B	10.6	B	12.6
	NB	A	1.4	A	0.4
	Unsignalized SB	A	0.0	A	0.1
MD 97 & Morningwood Drive/ Spartan Road	Overall	C	32.0	D	49.9
	EB	E	79.6	F	80.8
	WB	E	67.4	E	79.0
	NB	C	20.8	D	45.7
	Signalized SB	C	24.7	C	34.9
Morningwood Drive & N High Street	Overall	-	-	-	-
	EB	-	-	-	-
	WB	A	10.0	B	10.3
	NB	A	0.0	A	0.0
	Unsignalized SB	A	0.5	A	1.0

**Right: Projected LOS Analysis Summary**





# Traffic Impact Analysis

- Crash Analysis
  - 28 reported crashes in 5 years on Georgia Avenue within project limits
  - 25% of crashes at the intersection with North High Street/Buehler Road
- Sight Distance Analysis
  - Lower speed limits to 25mph
  - Narrower lanes on Morningwood Dr
  - Right-in, right-out control
  - Stop control





# Existing Conditions

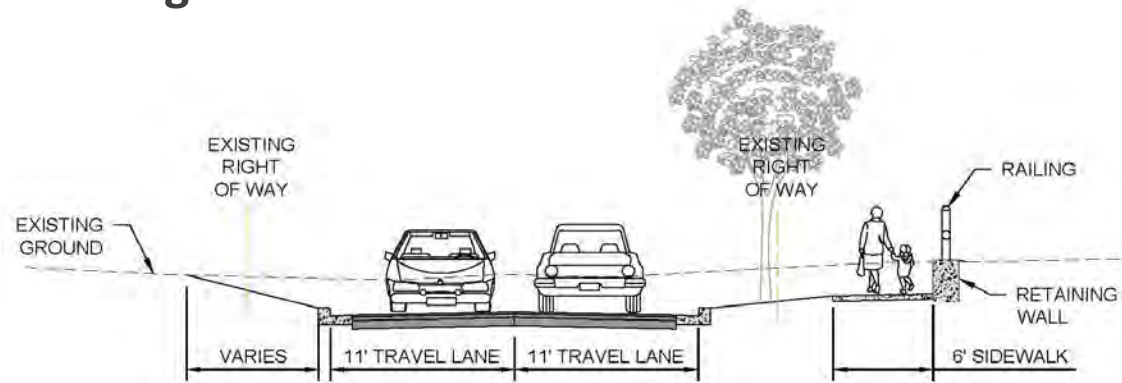
- Roadway width: varies 12' to 40'
- Right of Way width: varies 30' to 80'
- Access from Morningwood Drive
  - Pedestrians – stairs, not ADA-compliant
  - Cyclists – none
  - Drivers – none
- Street parking on both side
- Intermittent sidewalk on south side
- Zoning: Mixed use



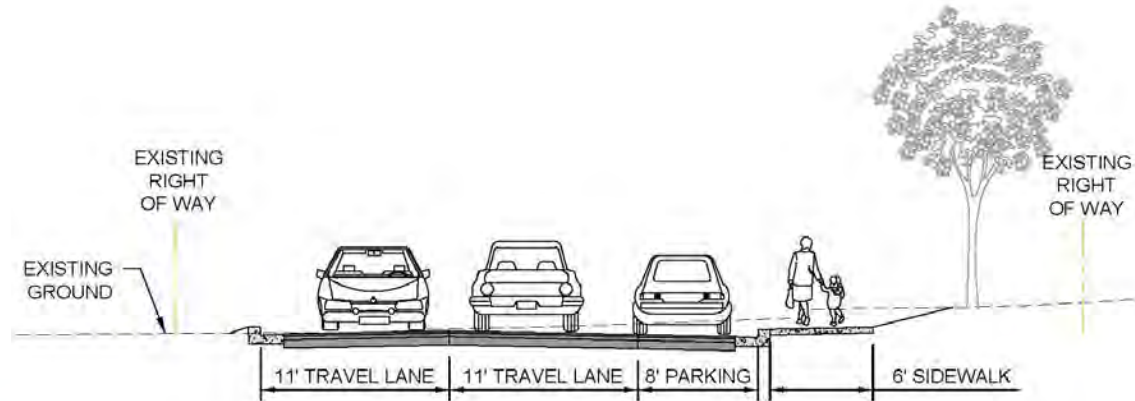


# Conceptual Alternative 1

## Typical Sections on North High Street



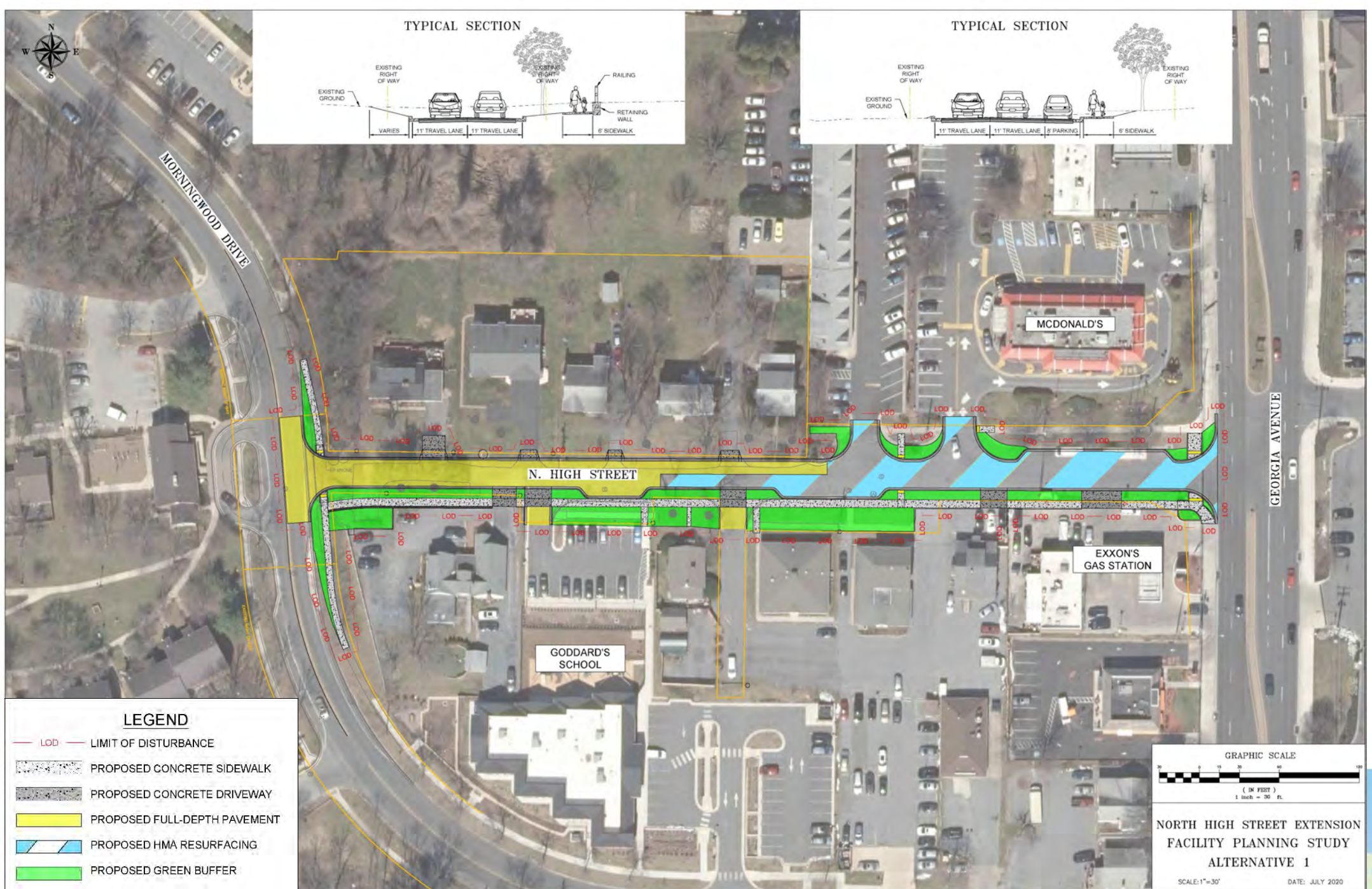
North High Street near Morningwood Drive



North High Street near Olney Center



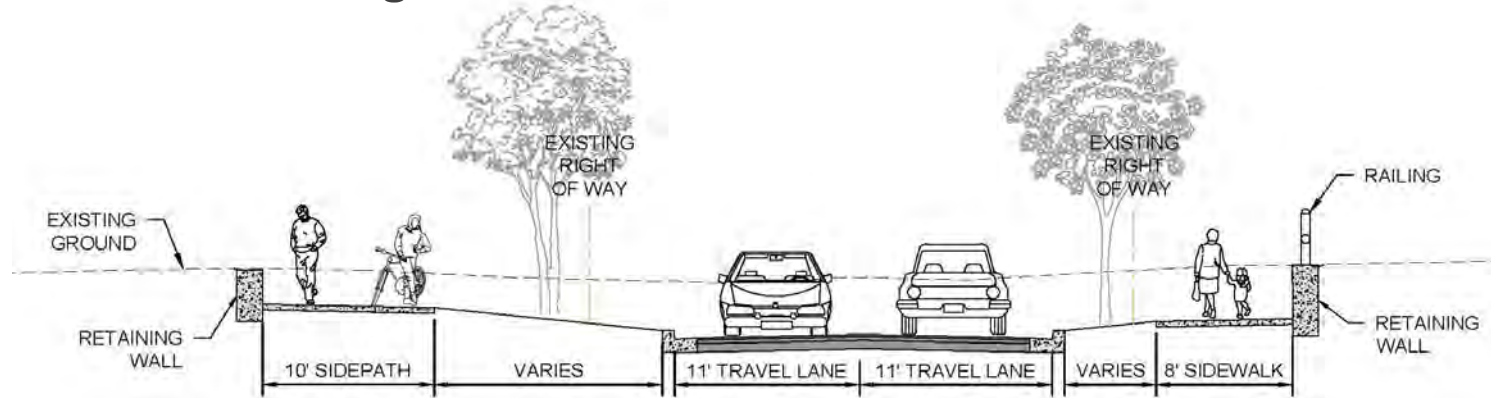




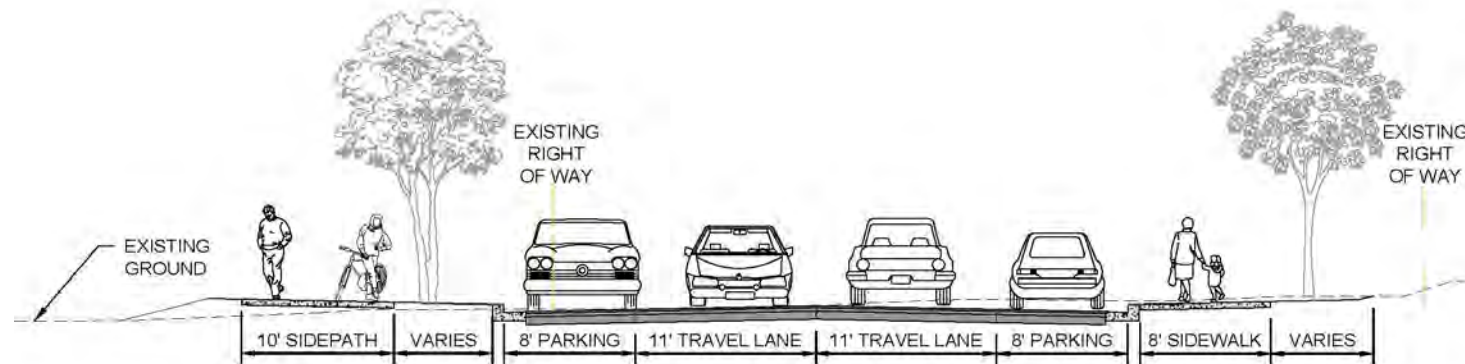


# Conceptual Alternative 2

## Typical Sections on North High Street



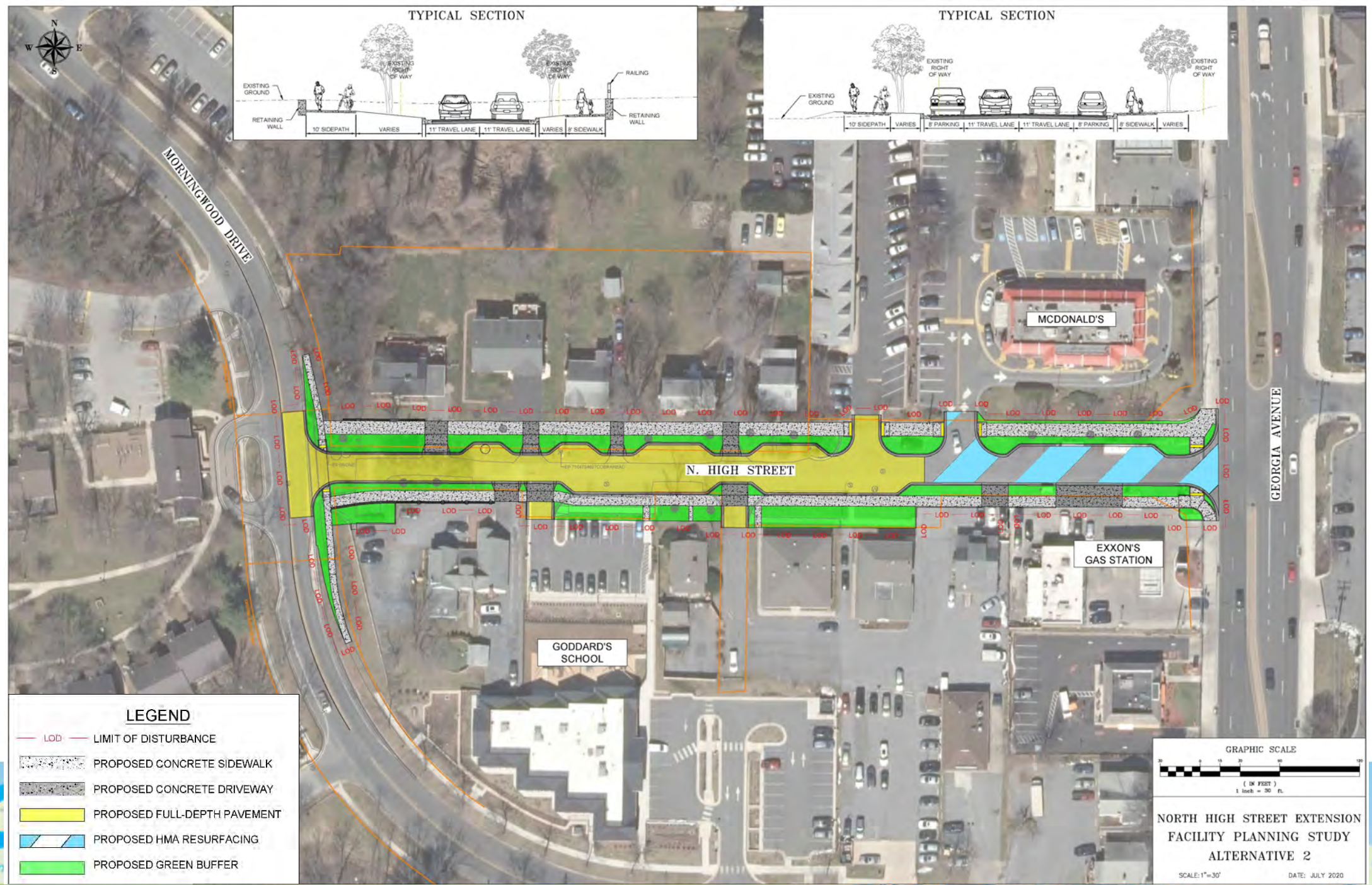
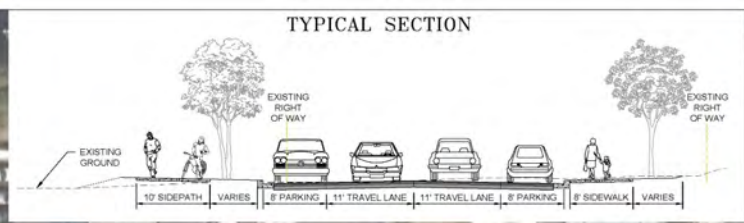
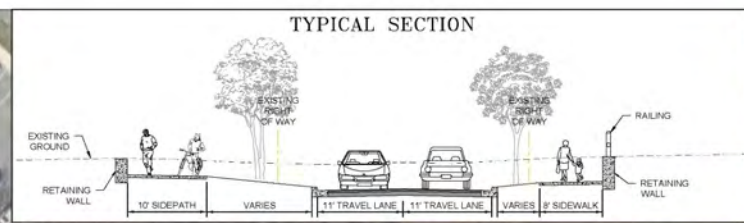
North High Street near Morningwood Drive



North High Street near Olney Center

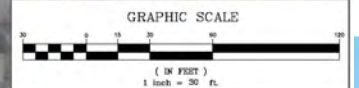






**LEGEND**

- LOD — LIMIT OF DISTURBANCE
- PROPOSED CONCRETE SIDEWALK
- PROPOSED CONCRETE DRIVEWAY
- PROPOSED FULL-DEPTH PAVEMENT
- PROPOSED HMA RESURFACING
- PROPOSED GREEN BUFFER



**NORTH HIGH STREET EXTENSION  
FACILITY PLANNING STUDY  
ALTERNATIVE 2**

SCALE: 1"=30'      DATE: JULY 2020



# Alternative Analysis Summary

	No-Build (Existing Conditions)	Alternative 1	Alternative 2
<b>Description</b>	Intermittent sidewalk on the south side, non-ADA compliant; no vehicular connection to Morningwood Drive.	11-foot travel lane in both directions which extends through to Morningwood Drive. A continuous sidewalk on the south side of the street.	11-foot travel lane in both directions which extends through to Morningwood Drive. Pedestrian facilities and parking spaces on both sides of the street.
<b>Utility Impacts</b>	None	8 Electric poles 3 Light poles	11 Electric Poles 3 Light poles
<b>On-Street Parking</b>	Approx. 11 spaces	9 spaces	16 spaces
<b>Tree Impacts</b>	None	5 Trees	15 Trees
<b>Number of Properties with Potential Impacts</b>	None	7 Properties	12 Properties
<b>Construction Easement Cost (Estimated)</b>	\$0	\$287k	\$557k
<b>Construction Cost (Estimated)</b>	\$0	\$593k	\$986k





# Next Steps

- Collect feedback from the community through 10/31/20
  - Online comment form
  - Email to: [angel.cheng@montgomerycountymd.gov](mailto:angel.cheng@montgomerycountymd.gov)
  - Traditional mail to:  
*MCDOT – Division of Transportation Engineering*  
*100 Edison Park Drive, 4<sup>th</sup> Floor*  
*Gaithersburg, MD 20878*
- Planning Board Briefing
- T&E Committee Briefing
- Additional design pending feedback



# Contact Information



Angel Cheng, P.E.  
Project Manager



240-777-7274\*



angel.cheng@montgomerycountymd.gov



<https://montgomerycountymd.gov/dot-dte/projects/NorthHighSt/Index.html>

\* Due to COVID-19, County staff has been teleworking from home, and email would be the preferred form of communication.







## Questions / Comments

