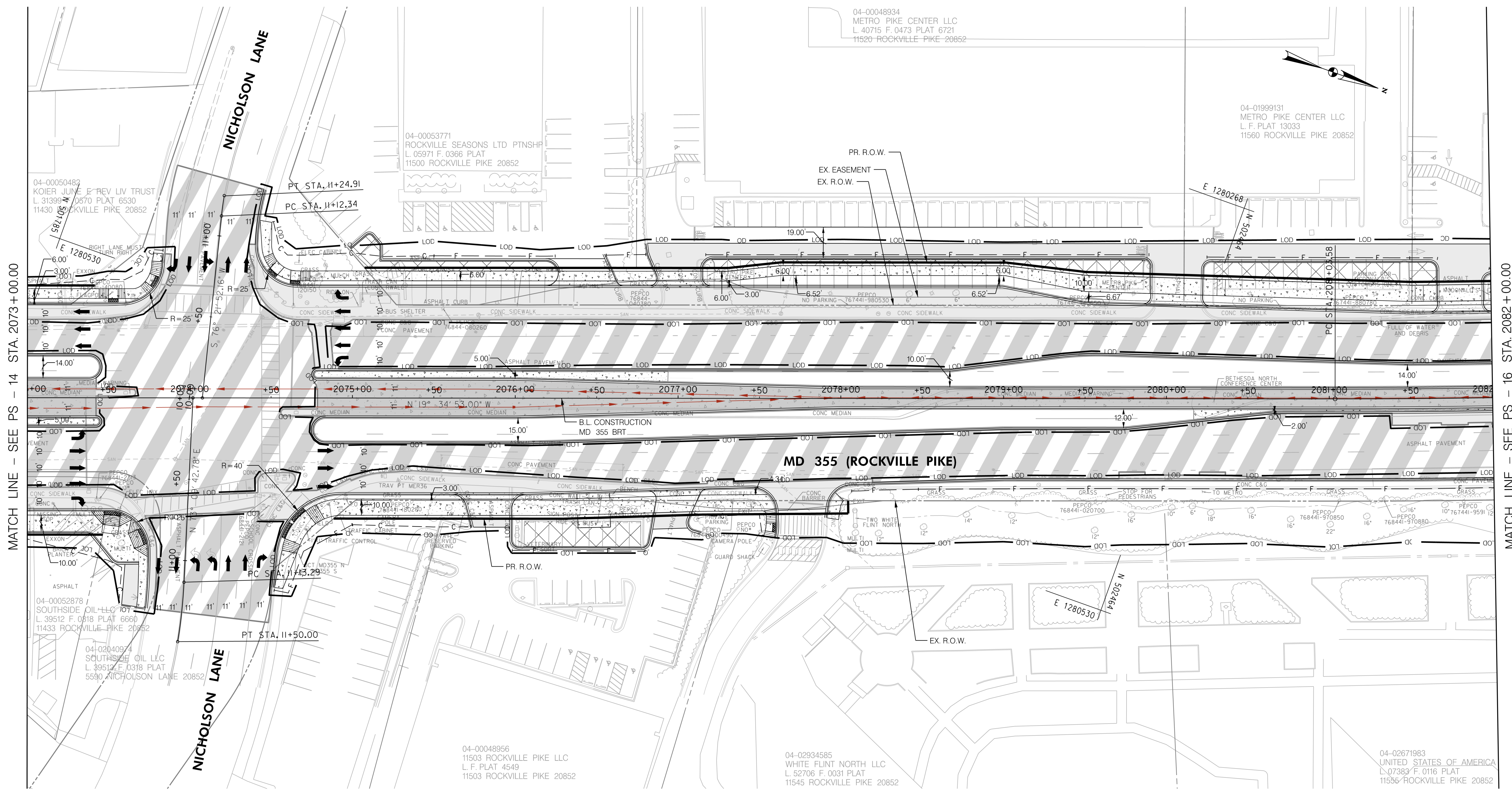


I:\11\2022\pw\stantec-sc-pw-bentley.com\stantec-sc-pw-02\Documents\2022\1306\700 CADD\702 Civil\35\Plans\PHD-0015\_MD355BRT.dgn



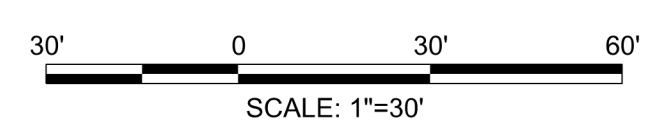
MATCH LINE - SEE PS - 14 STA. 2073 + 00.00

MATCH LINE - SEE PS - 16 STA. 2082 + 00.00

**LEGEND**

— C —	CUT
— F —	FILL
— LOD —	LIMIT OF DISTURBANCE
— EX. R.O.W. —	EX. RIGHT OF WAY
— PR. R.O.W. —	PR. RIGHT OF WAY
— P —	PARK BOUNDARY
— H —	HISTORICAL BOUNDARY
— BRT PATH —	BRT PATH

	FULL DEPTH CONCRETE
	FULL DEPTH ASPHALT
	MILL / OVERLAY
	CONC. SIDEWALK, MEDIAN, SHARED USE PATH
	CYCLE TRACK
	PAVEMENT REMOVAL
	RESIDENTIAL DISPLACEMENT
	BUSINESS DISPLACEMENT



PROFESSIONAL CERTIFICATION:  
 I HEREBY CERTIFY THAT THESE DOCUMENTS WERE PREPARED OR APPROVED BY ME AND THAT I AM A DULY LICENSED PROFESSIONAL ENGINEER UNDER THE LAWS OF THE STATE OF MARYLAND.  
 LICENSE NO: \_\_\_\_\_ EXPIRATION DATE: \_\_\_\_\_

NO.	REVISION	DATE	BY

MONTGOMERY COUNTY DEPARTMENT OF TRANSPORTATION  
 DIVISION OF TRANSPORTATION ENGINEERING  
 GAITHERSBURG, MARYLAND

RECOMMENDED FOR APPROVAL  
 SEE TITLE SHEET FOR SIGNATURES \_\_\_\_\_ Date \_\_\_\_\_  
 Chief, Design Section  
 APPROVED  
 SEE TITLE SHEET FOR SIGNATURES \_\_\_\_\_ Date \_\_\_\_\_  
 Chief, Division of Transportation Engineering  
 Designed by: \_\_\_\_\_ Drawn by: \_\_\_\_\_ Checked by: \_\_\_\_\_

**MD 355 BUS RAPID TRANSIT (BRT)**  
**ROADWAY PLAN**  
**SEGMENT 2**  
 SCALE : 1" = 30' DATE : DECEMBER 2022  
 Project No. : 502005 SHEET 106 of 887

PS-15