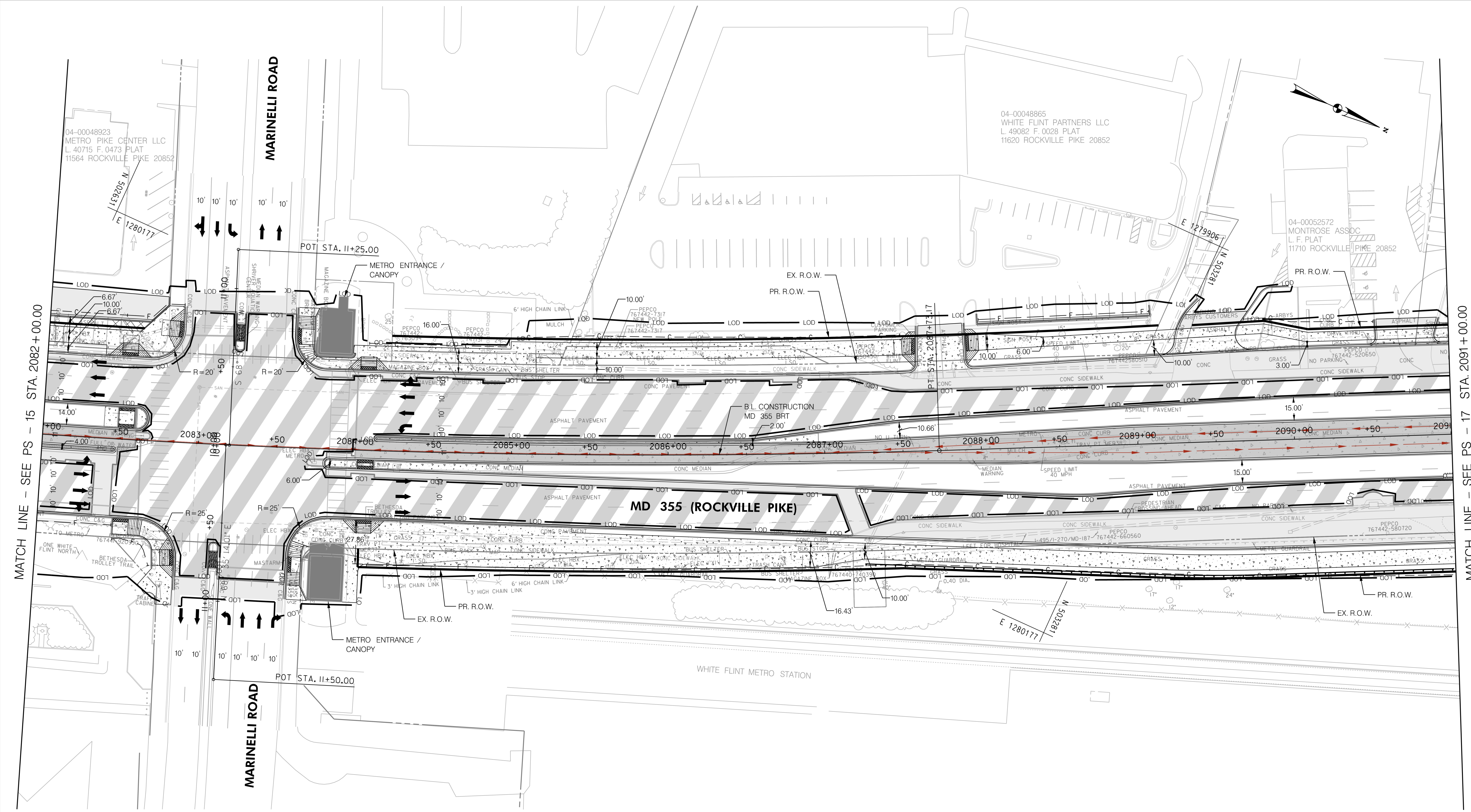


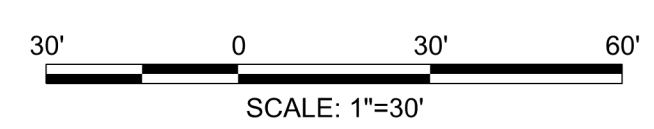
I:\11\2022\pw\stantec-sc-pw-bentley.com\stntec-sc-pw-02\Documents\202621306\700 CADD\702 Civil\35\ Plans\PHD-0016_MD355BRT.dgn



LEGEND

— C —	CUT
— F —	FILL
— LOD —	LIMIT OF DISTURBANCE
— EX. R.O.W. —	EX. RIGHT OF WAY
— PR. R.O.W. —	PR. RIGHT OF WAY
— P —	PARK BOUNDARY
— H —	HISTORICAL BOUNDARY
— BRT PATH —	BRT PATH

	FULL DEPTH CONCRETE
	FULL DEPTH ASPHALT
	MILL /OVERLAY
	CONC. SIDEWALK, MEDIAN, SHARED USE PATH
	CYCLE TRACK
	PAVEMENT REMOVAL
	RESIDENTIAL DISPLACEMENT
	BUSINESS DISPLACEMENT



PROFESSIONAL CERTIFICATION:
 I HEREBY CERTIFY THAT THESE DOCUMENTS WERE PREPARED OR APPROVED BY ME AND THAT I AM A DULY LICENSED PROFESSIONAL ENGINEER UNDER THE LAWS OF THE STATE OF MARYLAND.
 LICENSE NO: _____ EXPIRATION DATE: _____

NO.	REVISION	DATE	BY

MONTGOMERY COUNTY DEPARTMENT OF TRANSPORTATION
 DIVISION OF TRANSPORTATION ENGINEERING
 GAITHERSBURG, MARYLAND

RECOMMENDED FOR APPROVAL
 SEE TITLE SHEET FOR SIGNATURES _____ Date _____
 Chief, Design Section
 APPROVED
 SEE TITLE SHEET FOR SIGNATURES _____ Date _____
 Chief, Division of Transportation Engineering
 Designed by: _____ Drawn by: _____ Checked by: _____

PS-16

MD 355 BUS RAPID TRANSIT (BRT)
ROADWAY PLAN
SEGMENT 2

SCALE : 1" = 30' DATE : DECEMBER 2022
 Project No. : 502005 SHEET 107 of 887