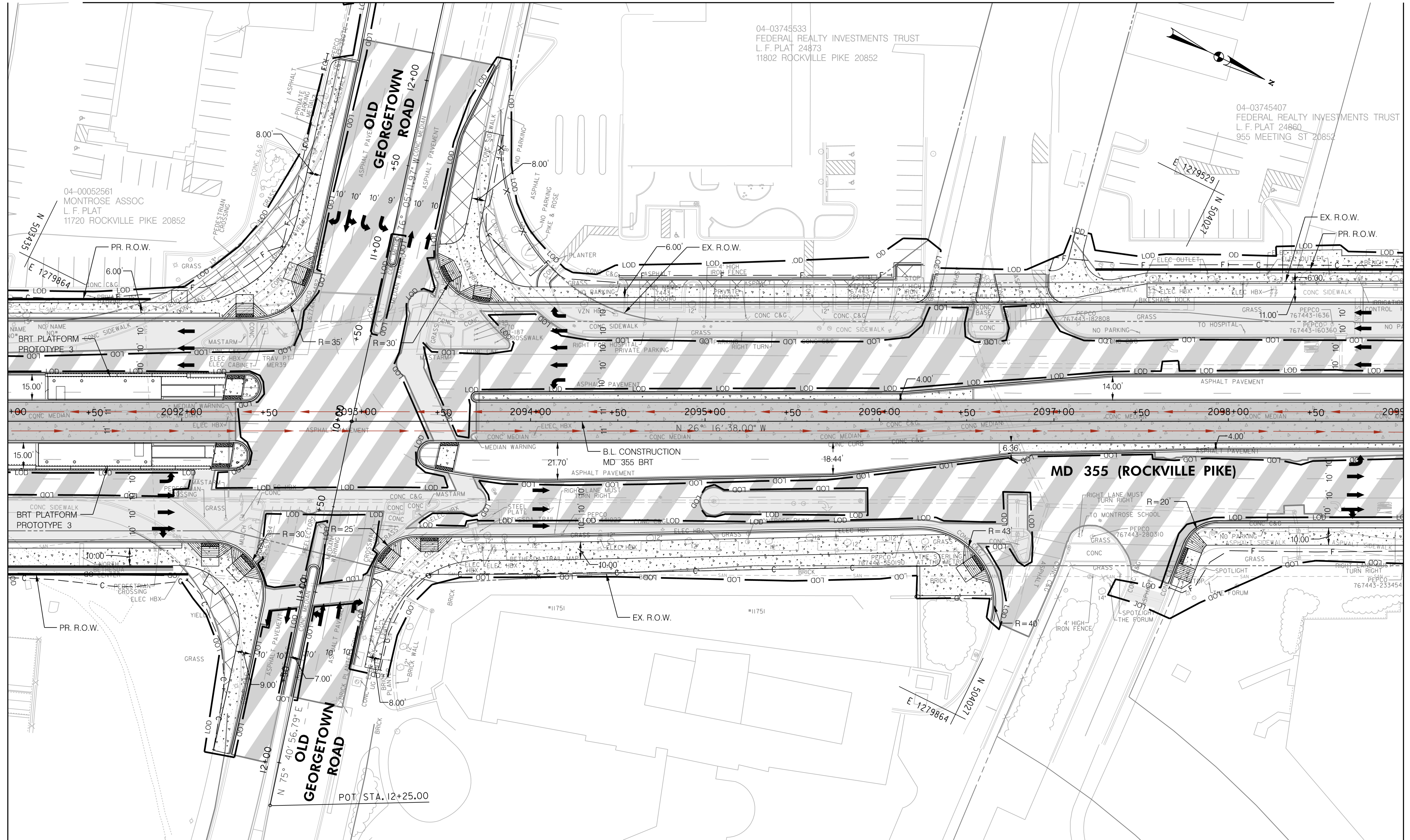


MATCH LINE - SEE PS - 17A

MATCH LINE - SEE PS - 16 STA. 2091+00.00

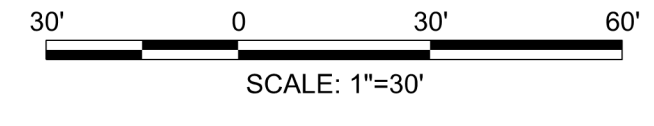
MATCH LINE - SEE PS - 18 STA. 2099+00.00



**LEGEND**

--- C ---	CUT
--- F ---	FILL
---	LIMIT OF DISTURBANCE
---	EX. RIGHT OF WAY
---	PR. RIGHT OF WAY
P	PARK BOUNDARY
H	HISTORICAL BOUNDARY
→	BRT PATH

[Pattern]	FULL DEPTH CONCRETE
[Pattern]	FULL DEPTH ASPHALT
[Pattern]	MILL / OVERLAY
[Pattern]	CONC. SIDEWALK, MEDIAN, SHARED USE PATH
[Pattern]	CYCLE TRACK
[Pattern]	PAVEMENT REMOVAL
R	RESIDENTIAL DISPLACEMENT
B	BUSINESS DISPLACEMENT



PROFESSIONAL CERTIFICATION:  
 I HEREBY CERTIFY THAT THESE DOCUMENTS WERE PREPARED OR APPROVED BY ME AND THAT I AM A DULY LICENSED PROFESSIONAL ENGINEER UNDER THE LAWS OF THE STATE OF MARYLAND.  
 LICENSE NO. \_\_\_\_\_ EXPIRATION DATE: \_\_\_\_\_

NO.	REVISION	DATE	BY

MONTGOMERY COUNTY DEPARTMENT OF TRANSPORTATION  
 DIVISION OF TRANSPORTATION ENGINEERING  
 GAITHERSBURG, MARYLAND

RECOMMENDED FOR APPROVAL  
 SEE TITLE SHEET FOR SIGNATURES  
 Chief, Design Section  
 APPROVED  
 SEE TITLE SHEET FOR SIGNATURES  
 Chief, Division of Transportation Engineering  
 Designed by: \_\_\_\_\_ Drawn by: \_\_\_\_\_ Checked by: \_\_\_\_\_

PS-17

MD 355 BUS RAPID TRANSIT (BRT)

ROADWAY PLAN  
 SEGMENT 2

SCALE : 1" = 30' DATE : DECEMBER 2022

Project No. : 502005 SHEET 108 of 887

I:\11\2022\pw\stntec-sc-pw-bentley.com\stntec-sc-pw-02\Documents\202621306\700 CADD\702 Civil\355\Plans\PHD-0017\_MD355BRT.dgn