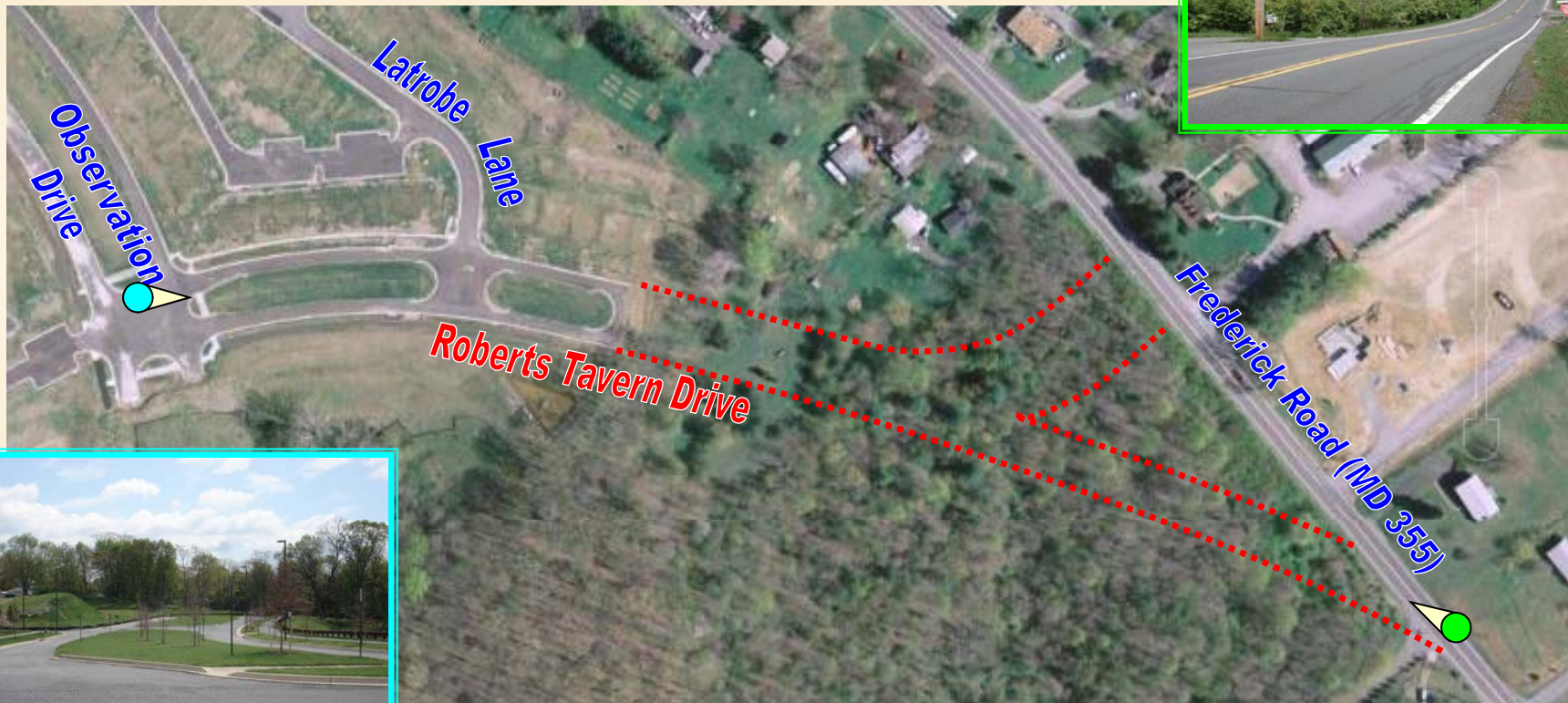


FACILITY PLANNING STUDY – PHASE I

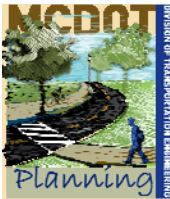
ROBERTS TAVERN DRIVE EXTENDED

Montgomery County Department of Transportation · Division of Transportation Engineering · Planning & Design Section

Presentation to the Montgomery County Council's T&E Committee
December 9, 2010

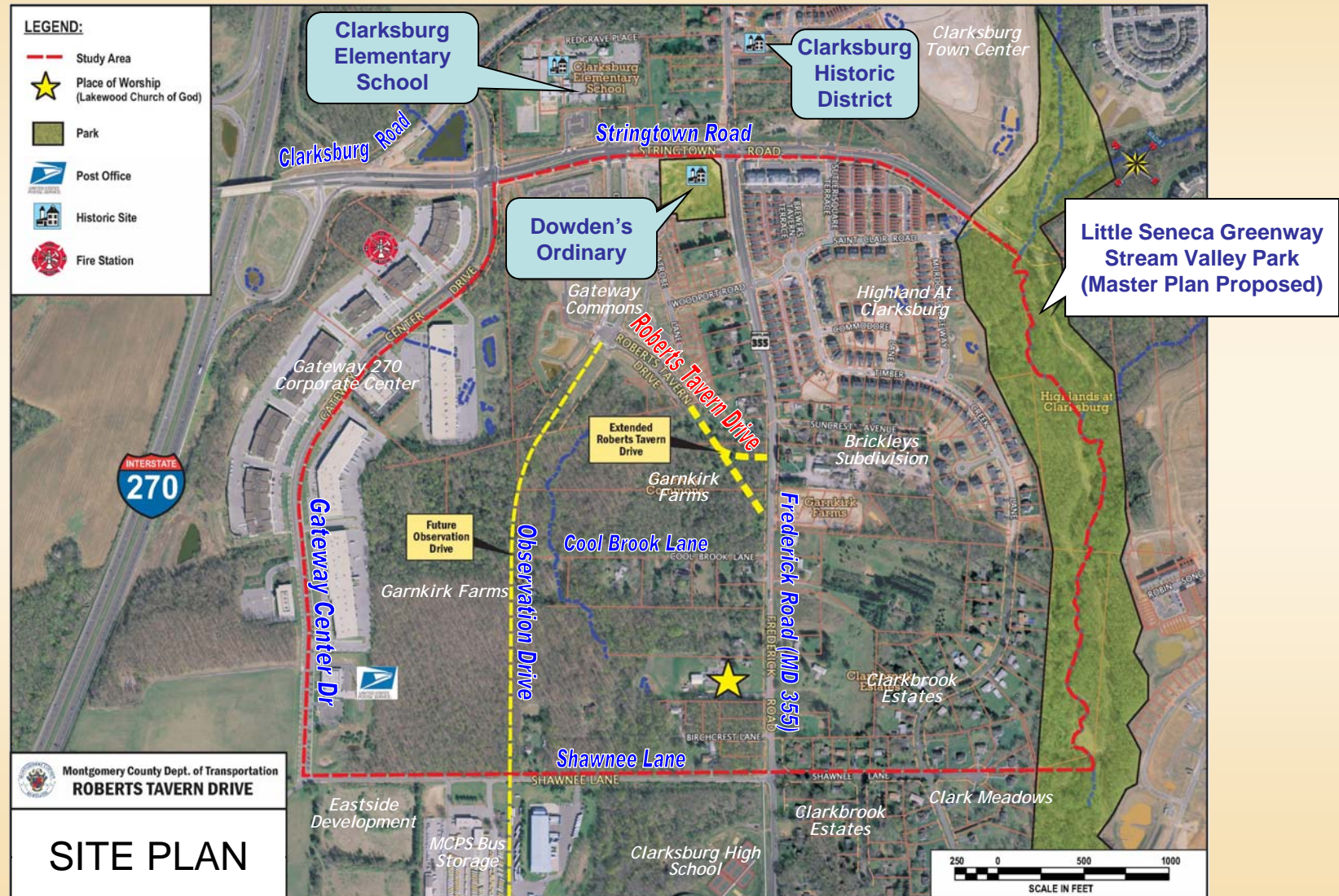


<http://www2.montgomerycountymd.gov/DOT-DTE/Common/home.aspx>



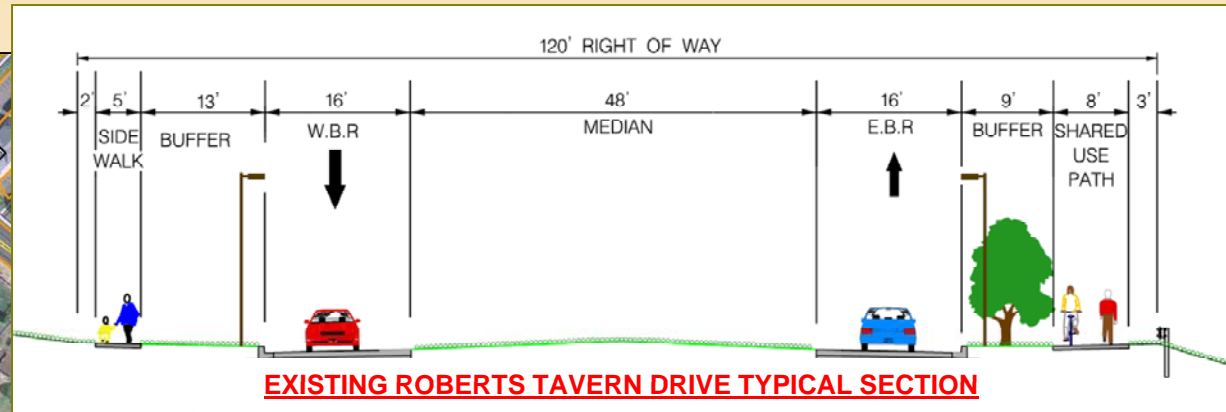
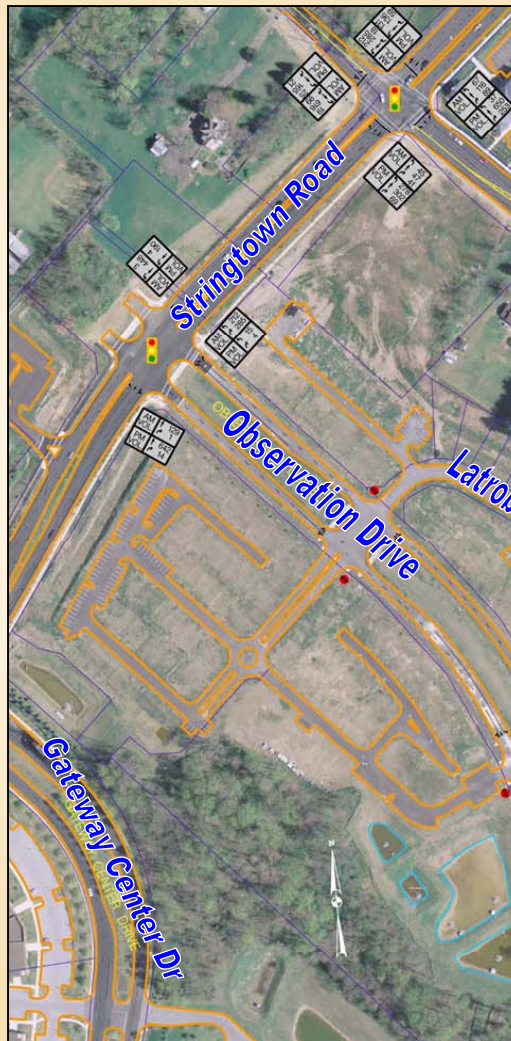
ROBERTS TAVERN DRIVE EXTENDED, FACILITY PLANNING STUDY – PHASE I SITE PLAN

Montgomery County Department of Transportation · Division of Transportation Engineering · Planning & Design Section



ROBERTS TAVERN DRIVE EXTENDED, FACILITY PLANNING STUDY – PHASE I EXISTING CONDITIONS

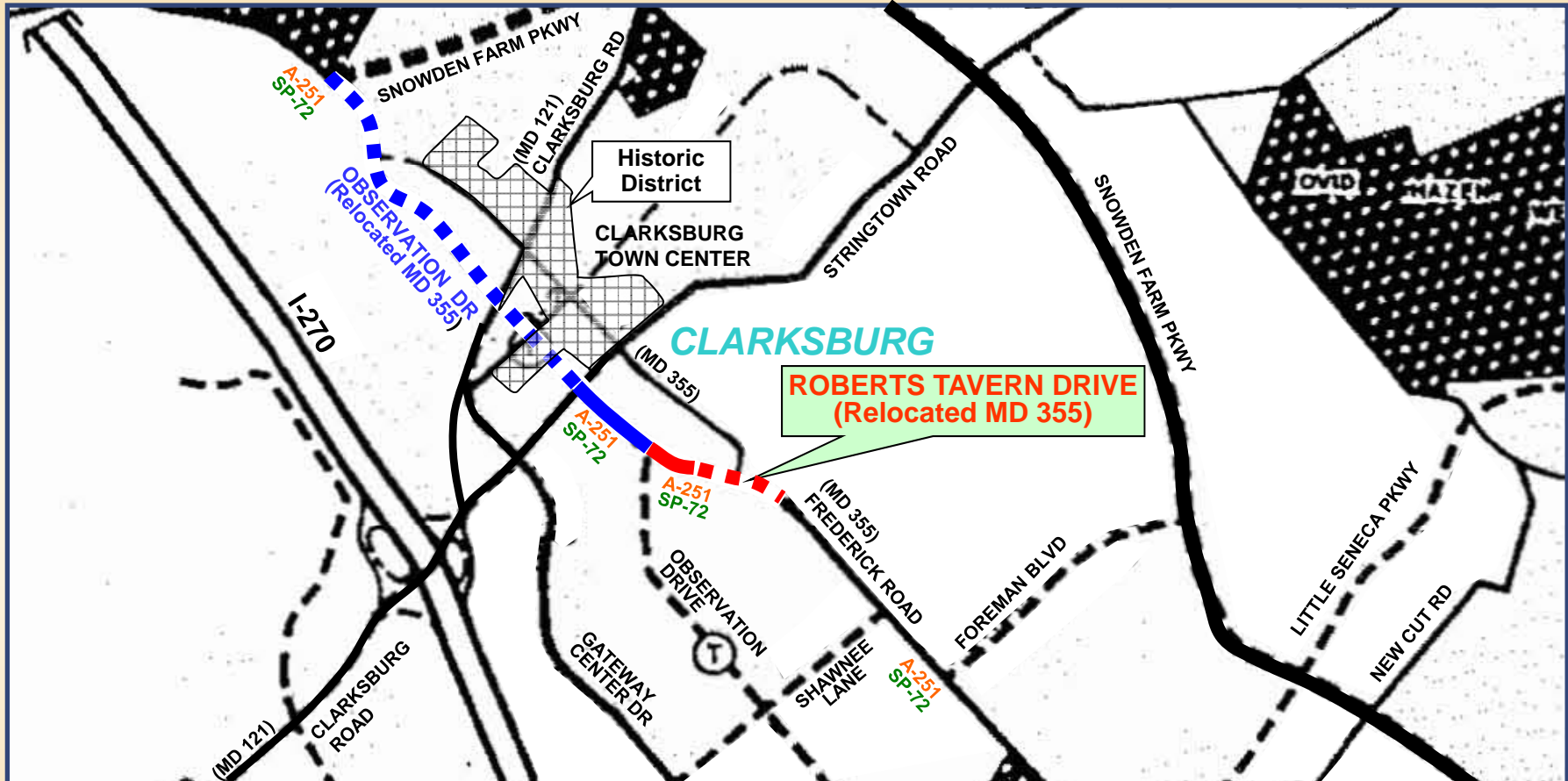
Montgomery County Department of Transportation · Division of Transportation Engineering · Planning & Design Section



LEGEND	
	PROPERTY LINES
	CURB /EDGE OF PAVEMENT
	STORMWATER MANAGEMENT POND
	SIGNALIZED INTERSECTION
	STOP SIGN
	EXISTING LARGE TREE

ROBERTS TAVERN DRIVE EXTENDED, FACILITY PLANNING STUDY – PHASE I MASTER PLANS

Montgomery County Department of Transportation · Division of Transportation Engineering · Planning & Design Section



1994 Clarksburg Master Plan & Hyattstown Special Study Area

2005 Countywide Bikeways Functional Master Plan

- **A-251** : Part of Relocated MD 355, classified as 4-lane divided arterial road w/ 120' min. R.O.W.
- **SP-72** : Shared Use Bike Path Class I



ROBERTS TAVERN DRIVE EXTENDED, FACILITY PLANNING STUDY – PHASE I

PURPOSE AND NEED

Montgomery County Department of Transportation · Division of Transportation Engineering · Planning & Design Section

PURPOSE OF PROJECT

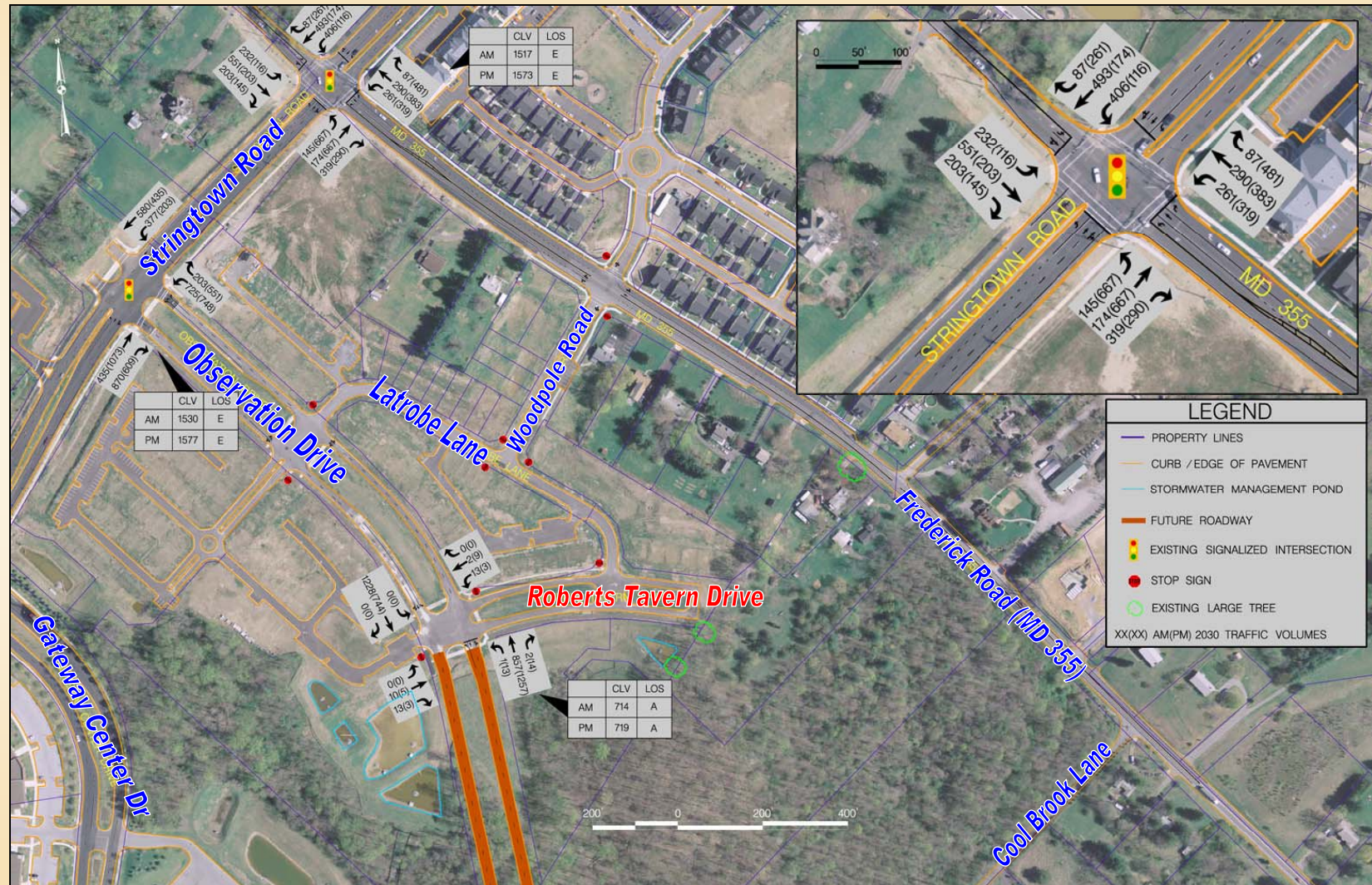
- **Divert regional through traffic around the Clarksburg Town Center and its historic district**
- **Improve mobility and access for people and goods that use MD 355 and the surrounding roadway network**
- **Improve travel efficiency, provide congestion relief, expand neighborhood connections, and enhance multimodal access**

NEED FOR PROJECT

- **Accommodate planned land use**
- **Reduce future traffic congestion**
- **Improve network efficiency**
- **Provide local neighborhood connection**
- **Enhance bicycle and pedestrian connections**

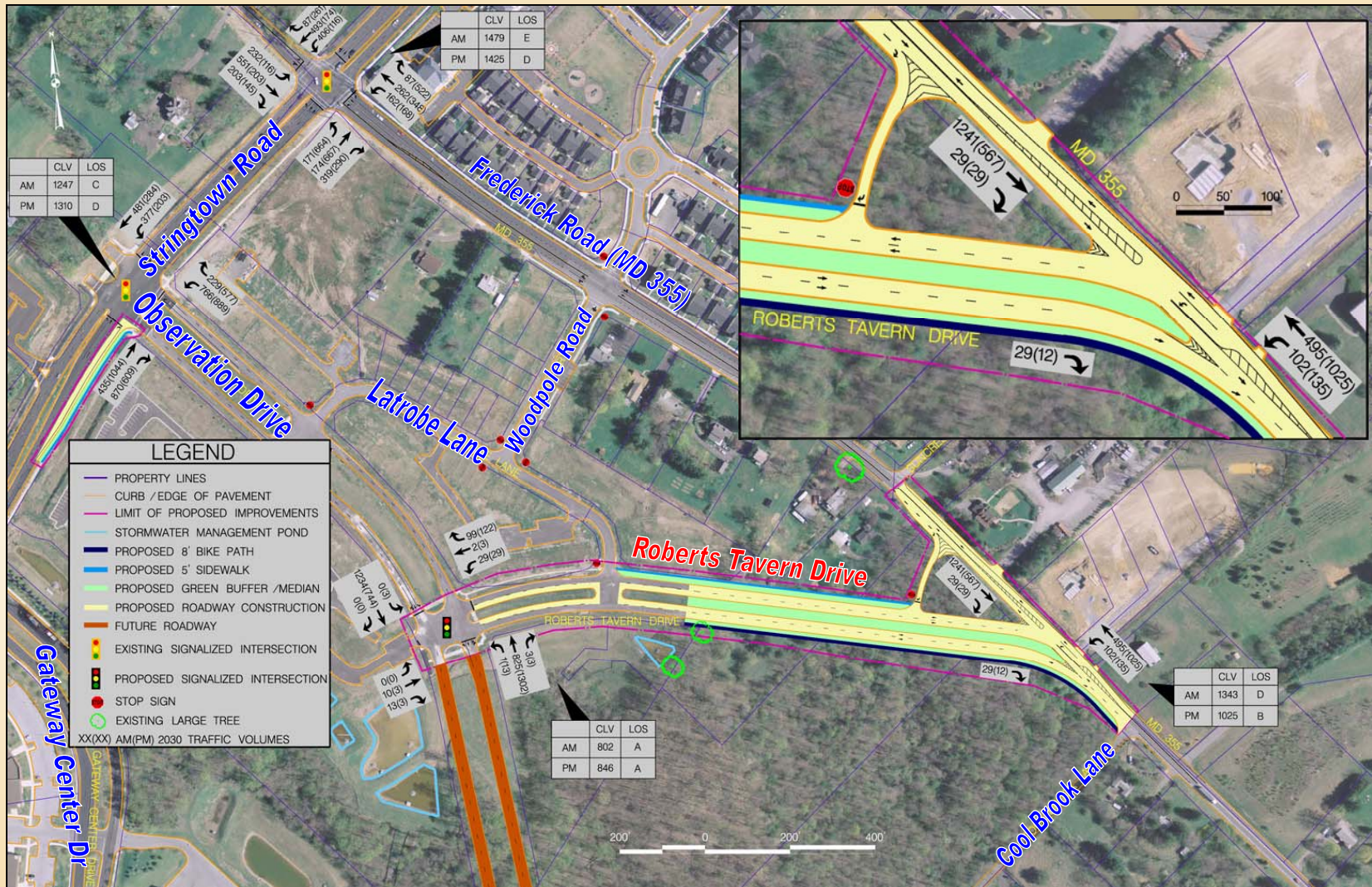
ROBERTS TAVERN DRIVE EXTENDED, FACILITY PLANNING STUDY – PHASE I ALTERNATIVE 1 – NO BUILD

Montgomery County Department of Transportation · Division of Transportation Engineering · Planning & Design Section



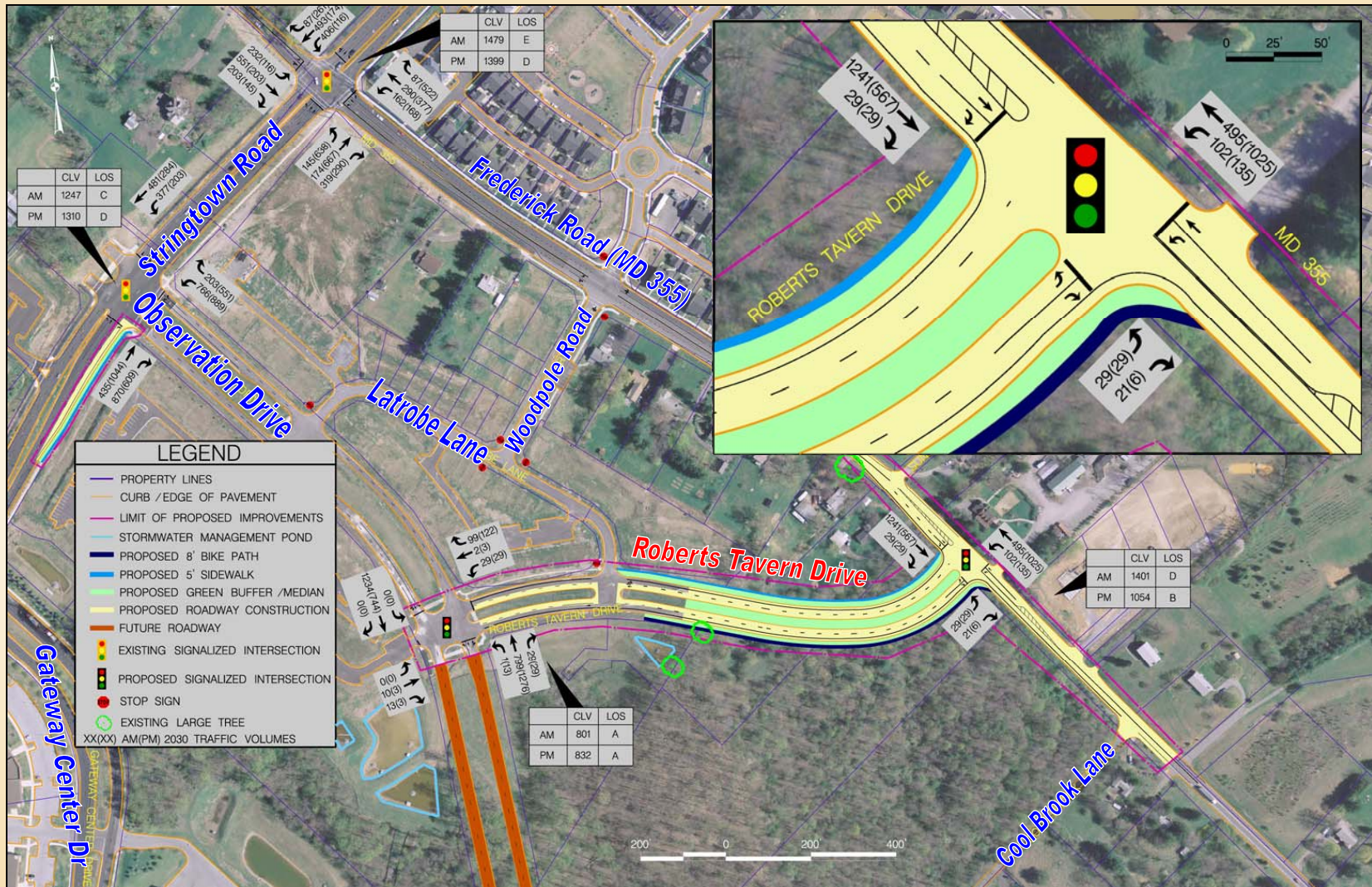
ROBERTS TAVERN DRIVE EXTENDED, FACILITY PLANNING STUDY – PHASE I ALTERNATIVE 2 – MASTER PLAN

Montgomery County Department of Transportation · Division of Transportation Engineering · Planning & Design Section



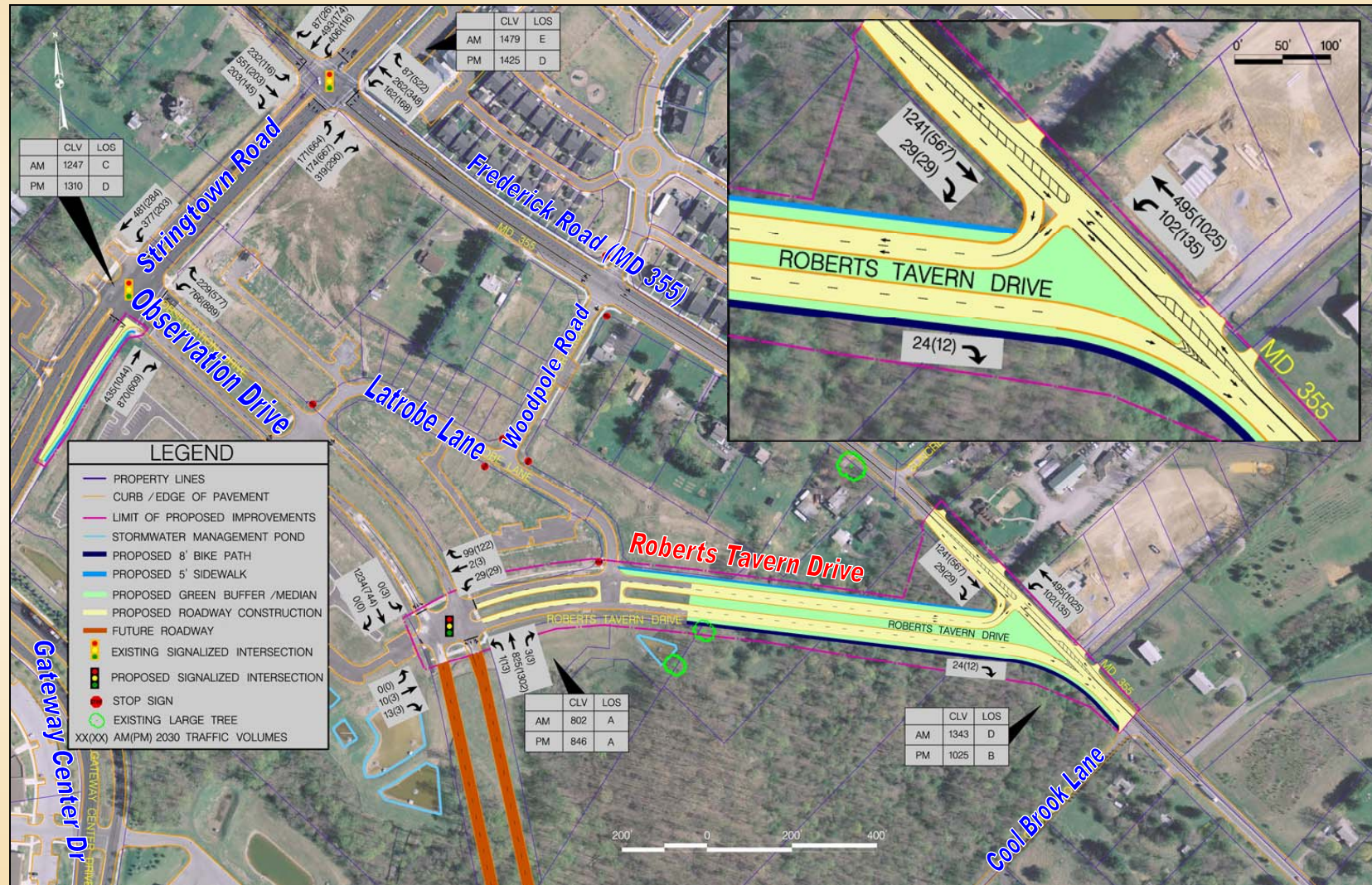
ROBERTS TAVERN DRIVE EXTENDED, FACILITY PLANNING STUDY – PHASE I ALTERNATIVE 3 – “T” INTERSECTION

Montgomery County Department of Transportation · Division of Transportation Engineering · Planning & Design Section



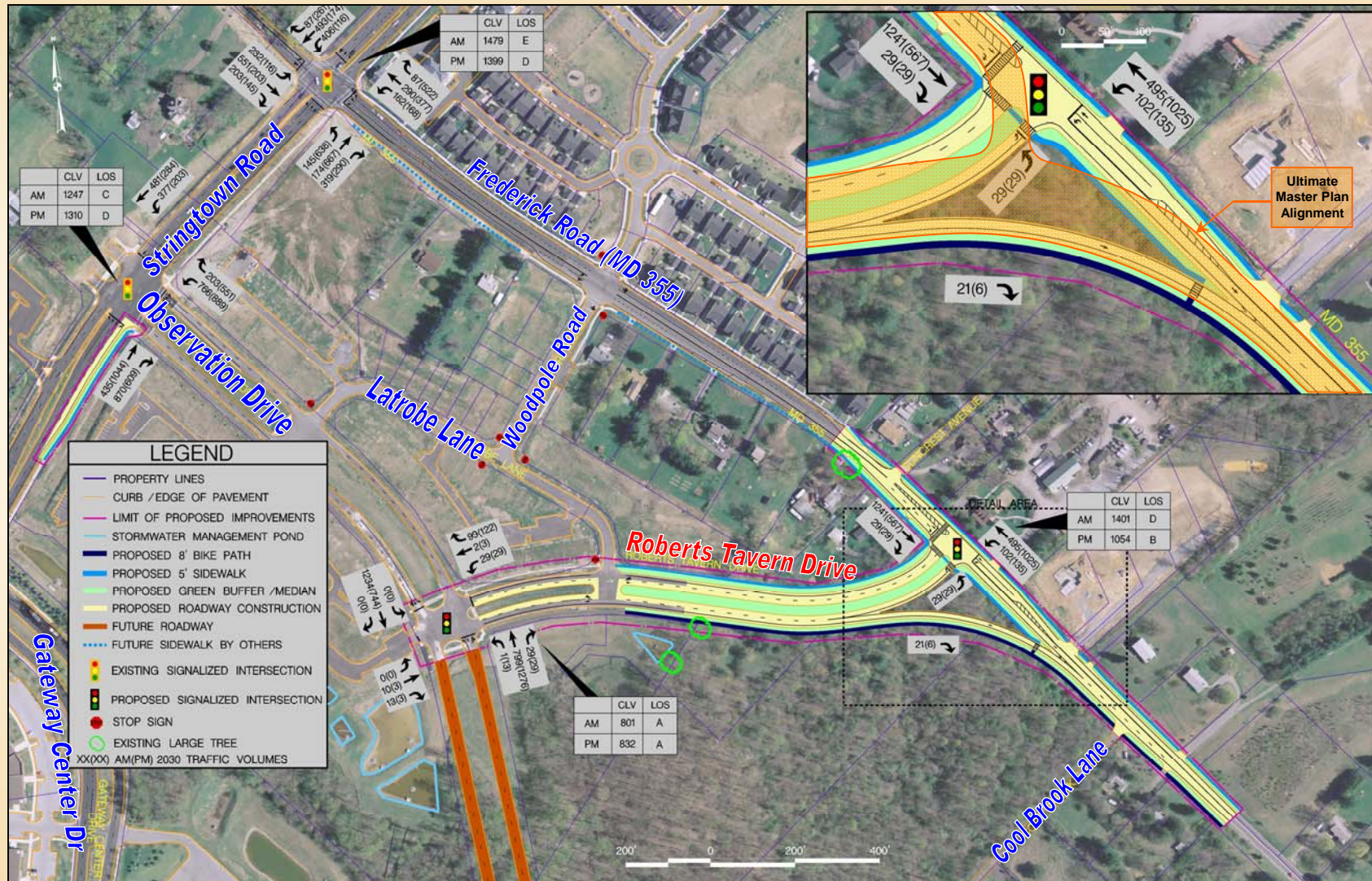
ROBERTS TAVERN DRIVE EXTENDED ALTERNATIVE 4 – MASTER PLAN MODIFIED

Montgomery County Department of Transportation · Division of Transportation Engineering · Planning & Design Section



ROBERTS TAVERN DRIVE EXTENDED, FACILITY PLANNING STUDY – PHASE I RECOMMENDED ALTERNATIVE

Montgomery County Department of Transportation · Division of Transportation Engineering · Planning & Design Section



ROBERTS TAVERN DRIVE EXTENDED, FACILITY PLANNING STUDY – PHASE I PROPOSED TYPICAL SECTIONS

Montgomery County Department of Transportation · Division of Transportation Engineering · Planning & Design Section

