

November 12, 2009



Facility Planning Study – Phase I

ROBERTS TAVERN DRIVE EXTENDED

From Existing Roberts Tavern Drive East Terminus
To Frederick Road (MD 355)

Isiah Leggett

Montgomery County Executive

Arthur Holmes, Jr. – Director
Department of Transportation

Division of
Transportation Engineering
100 Edison Park Drive, 4th Flr
Gaithersburg, MD 20878
Phone: 240-777-7223
Fax: 240-777-7277

Bruce Johnston, P.E.
Division Chief

Holger Serrano, P.E.
Deputy

Sogand Seirafi, P.E.
Planning & Design

Tom M. Reise
Property Acquisition

Tim H. Cupples, P.E.
Construction



PUBLIC MEETING

**Thursday, November 12, 2009
7:00PM – 9:00PM**

**Clarksburg High School
22500 Wims Road
Clarksburg, MD 20871**



Isiah Leggett
Montgomery County Executive

Facility Planning Study – Phase I
ROBERTS TAVERN DRIVE EXTENDED
From Existing Roberts Tavern Drive East Terminus
To Frederick Road (MD 355)

PURPOSE OF PUBLIC MEETING

- **Introduce project team**
- **Explain project procedure and schedule**
- **Provide project overview**
- **Share the background data**
- **Present alternatives and draft concepts**
- **Listen to community's concerns and gather feedback.**



Isiah Leggett
Montgomery County Executive

Facility Planning Study – Phase I
ROBERTS TAVERN DRIVE EXTENDED
 From Existing Roberts Tavern Drive East Terminus
 To Frederick Road (MD 355)

PROJECT PROCEDURE & SCHEDULE





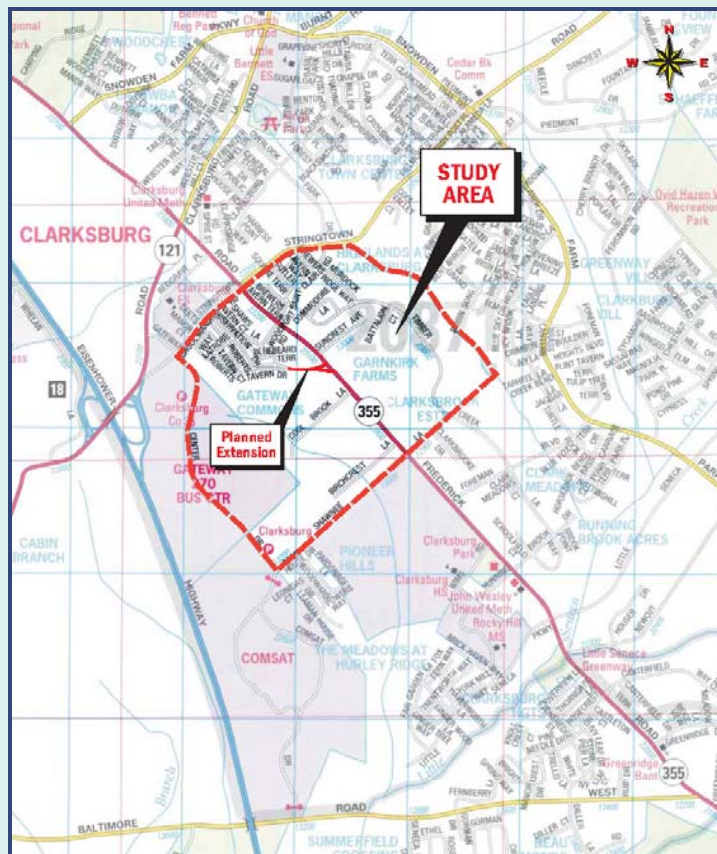
Isiah Leggett
Montgomery County Executive

Facility Planning Study – Phase I

ROBERTS TAVERN DRIVE EXTENDED

From Existing Roberts Tavern Drive East Terminus
To Frederick Road (MD 355)

PROJECT STUDY AREA & LIMITS





Isiah Leggett

Montgomery County Executive

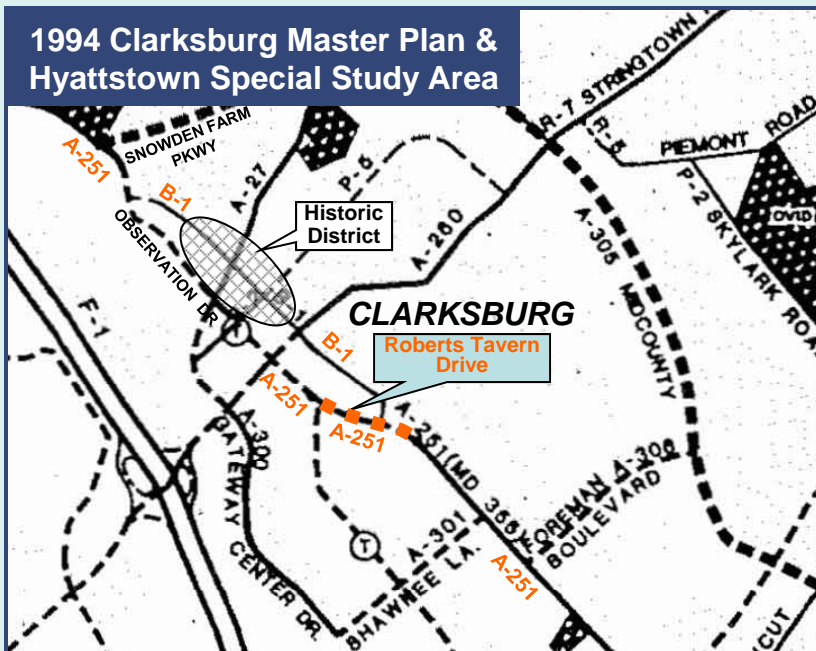
Facility Planning Study - Phase I

ROBERTS TAVERN DRIVE EXTENDED

From Existing Roberts Tavern Drive East Terminus
To Frederick Road (MD 355)

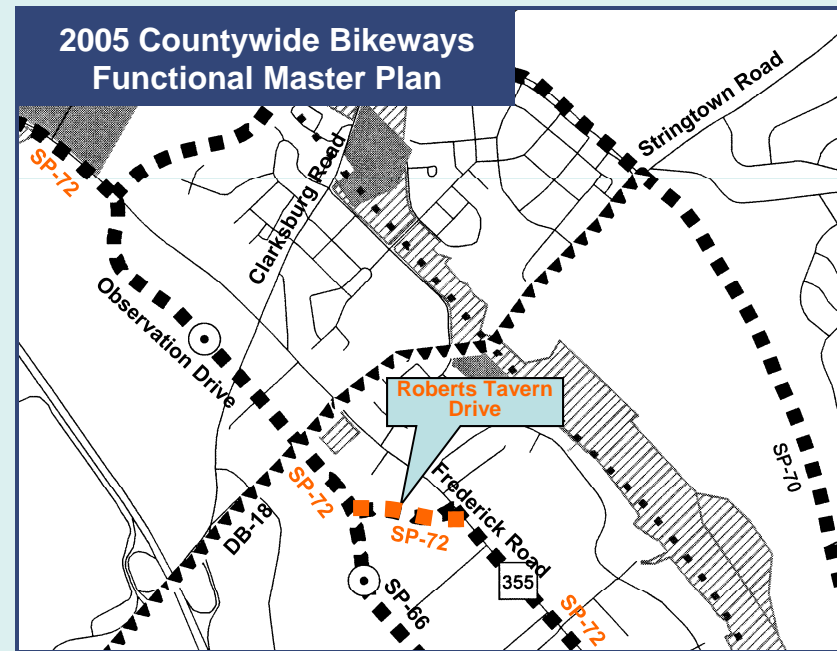
MASTER PLAN RECOMMENDATIONS

1994 Clarksburg Master Plan & Hyattstown Special Study Area



- **A-251** : Frederick Road (MD 355) be relocated approximately 500' west to bypass the Clarksburg Historic District and be classified as Arterial Road w/ 4 lanes divided
- **B-1**: The old MD 355 be reclassified from Major Highway to Business Street w/ 2 lanes

2005 Countywide Bikeways Functional Master Plan



- **SP-72**: Shared Use Bike Path Class I



Isiah Leggett
Montgomery County Executive

Facility Planning Study – Phase I
ROBERTS TAVERN DRIVE EXTENDED
From Existing Roberts Tavern Drive East Terminus
To Frederick Road (MD 355)

PURPOSE OF PROJECT

- **Improve mobility and access for people and goods that use MD 355 and the surrounding roadway network**
- **Divert regional through traffic around the Clarksburg Town Center and its historic district**
- **Improve travel efficiency, provide congestion relief, expand neighborhood connections, and enhance multimodal access.**



Isiah Leggett

Montgomery County Executive

Facility Planning Study – Phase I
ROBERTS TAVERN DRIVE EXTENDED
From Existing Roberts Tavern Drive East Terminus
To Frederick Road (MD 355)

NEED FOR PROJECT

- **Accommodate land use**
- **Reduce future traffic congestion**
- **Improve network efficiency**
- **Provide local neighborhood connection**
- **Enhance bicycle and pedestrian connections.**



Isiah Leggett
Montgomery County Executive

Facility Planning Study – Phase I
ROBERTS TAVERN DRIVE EXTENDED
From Existing Roberts Tavern Drive East Terminus
To Frederick Road (MD 355)

COMPLETED TO DATE

- **Environmental Assessment**
- **Traffic Analysis**
- **Purpose and Need**
- **Alternatives and Draft Concepts.**



Isiah Leggett

Montgomery County Executive

Facility Planning Study – Phase I
ROBERTS TAVERN DRIVE EXTENDED
From Existing Roberts Tavern Drive East Terminus
To Frederick Road (MD 355)

NEXT STEP FOR PHASE I STUDY

- Obtain community input
- Refine concepts per public input
- Select Recommended Alternative
- Brief Maryland-National Capital Park and Planning Commission (M-NCPPC)
- Obtain approval from Montgomery County Council's Transportation, Infrastructure, Energy and Environment Committee (T&E) and DOT Director.



Isiah Leggett
Montgomery County Executive

Facility Planning Study - Phase I
ROBERTS TAVERN DRIVE EXTENDED
From Existing Roberts Tavern Drive East Terminus
To Frederick Road (MD 355)

CONTACT PROJECT MANAGER

Project Manager: Greg Hwang

Mailing Address: Division of Transportation Engineering (DTE)
100 Edison Park Drive, 4th Floor
Gaithersburg, Maryland 20878

Phone: 240-777-7279

Fax: 240-777-7277

e-mail: Greg.Hwang@montgomerycountymd.gov

DTE Home Page:

<http://www2.montgomerycountymd.gov/DOT-DTE/Common/home.aspx>



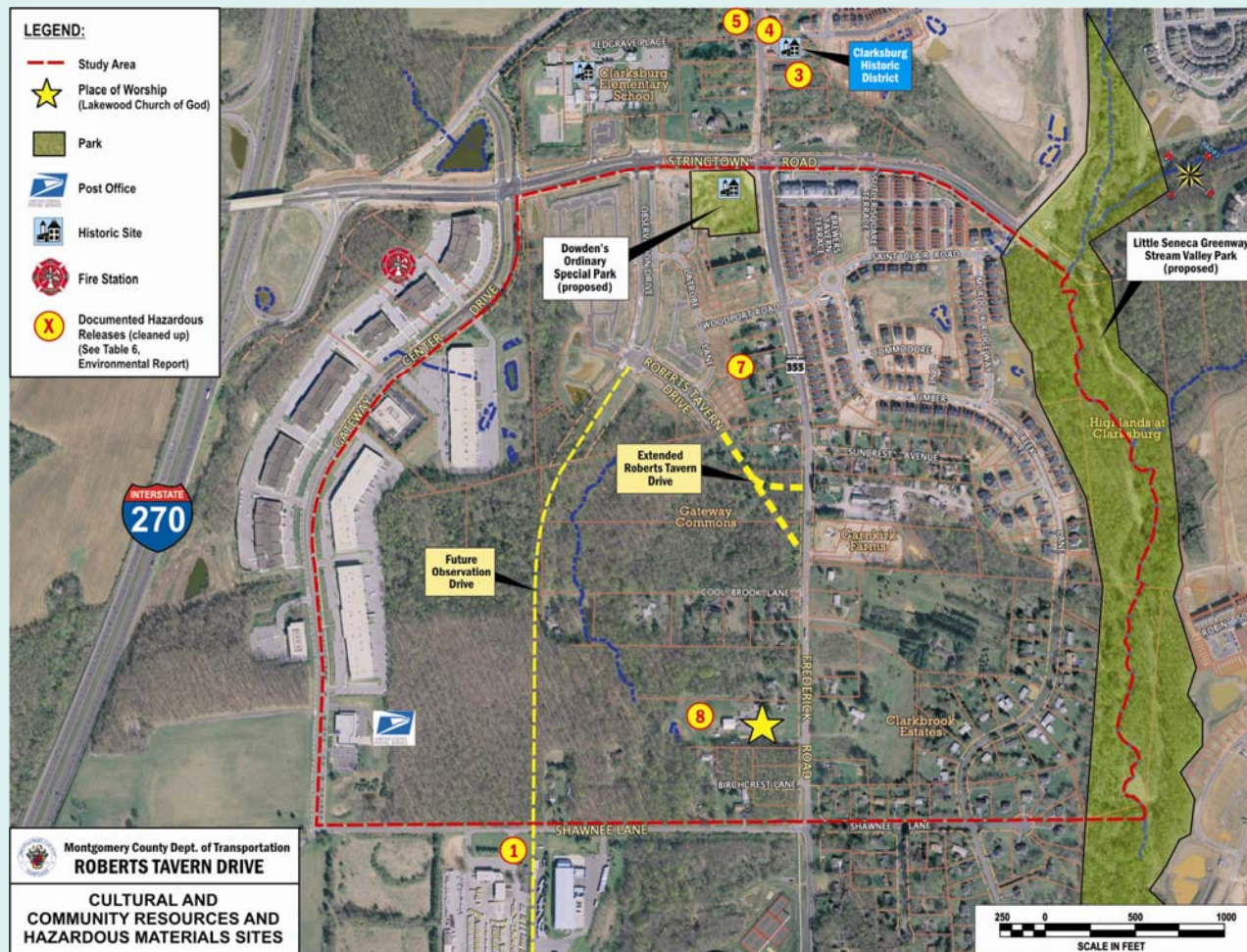
Isiah Leggett
Montgomery County Executive

Facility Planning Study - Phase I

ROBERTS TAVERN DRIVE EXTENDED

From Existing Roberts Tavern Drive East Terminus
To Frederick Road (MD 355)

EXISTING SITE CONDITIONS





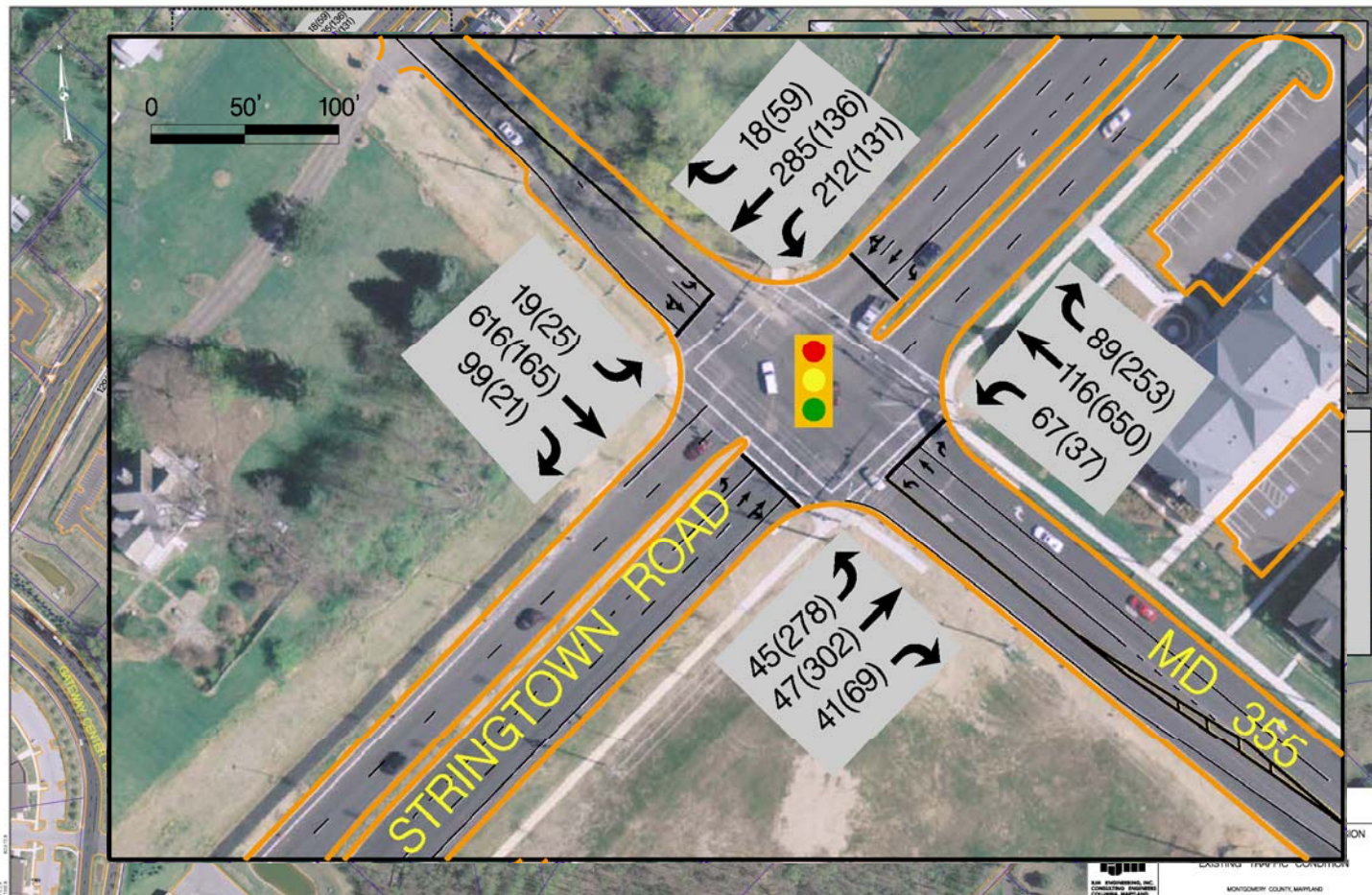
Isiah Leggett
Montgomery County Executive

Facility Planning Study - Phase I

ROBERTS TAVERN DRIVE EXTENDED

From Existing Roberts Tavern Drive East Terminus
To Frederick Road (MD 355)

EXISTING TRAFFIC CONDITION





Isiah Leggett

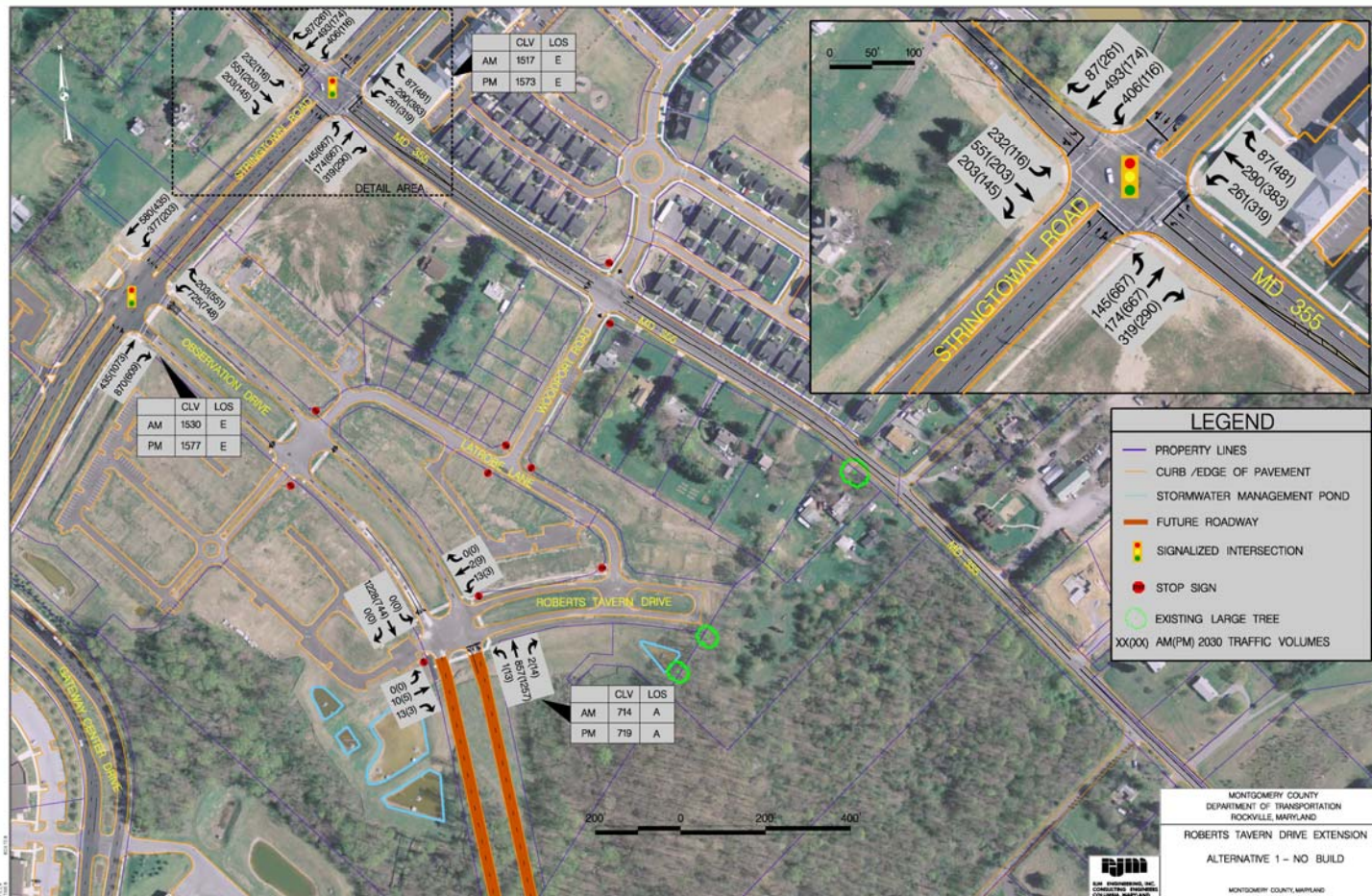
Montgomery County Executive

Facility Planning Study - Phase I

ROBERTS TAVERN DRIVE EXTENDED

From Existing Roberts Tavern Drive East Terminus
To Frederick Road (MD 355)

ALTERNATIVE 1 – NO BUILD





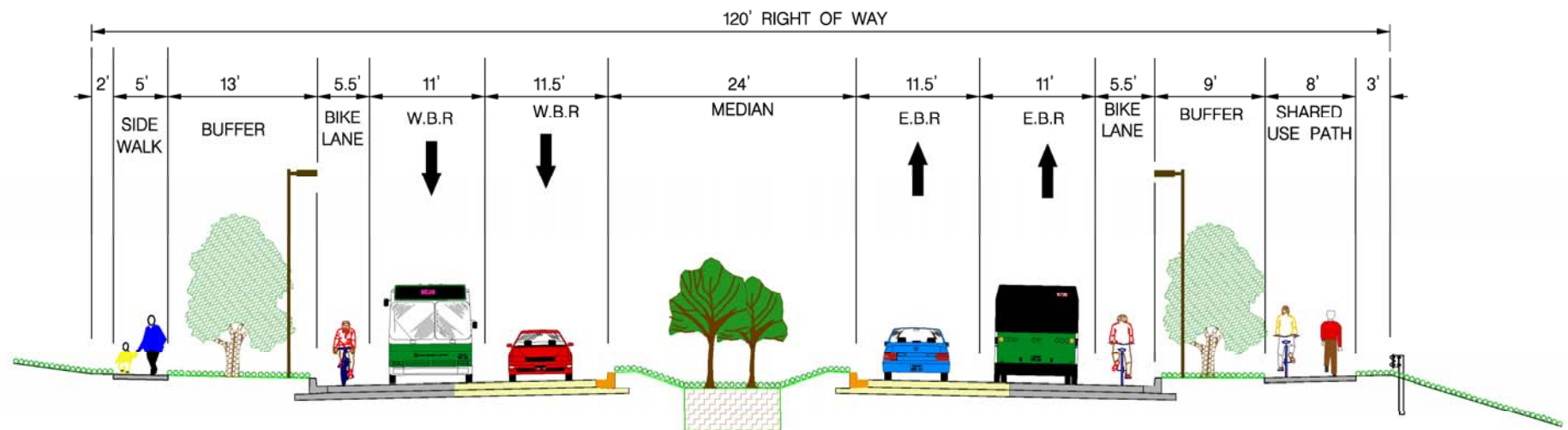
Isiah Leggett
Montgomery County Executive

Facility Planning Study - Phase I

ROBERTS TAVERN DRIVE EXTENDED

From Existing Roberts Tavern Drive East Terminus
To Frederick Road (MD 355)

TYPICAL SECTION – OBSERVATION TO LATROBE



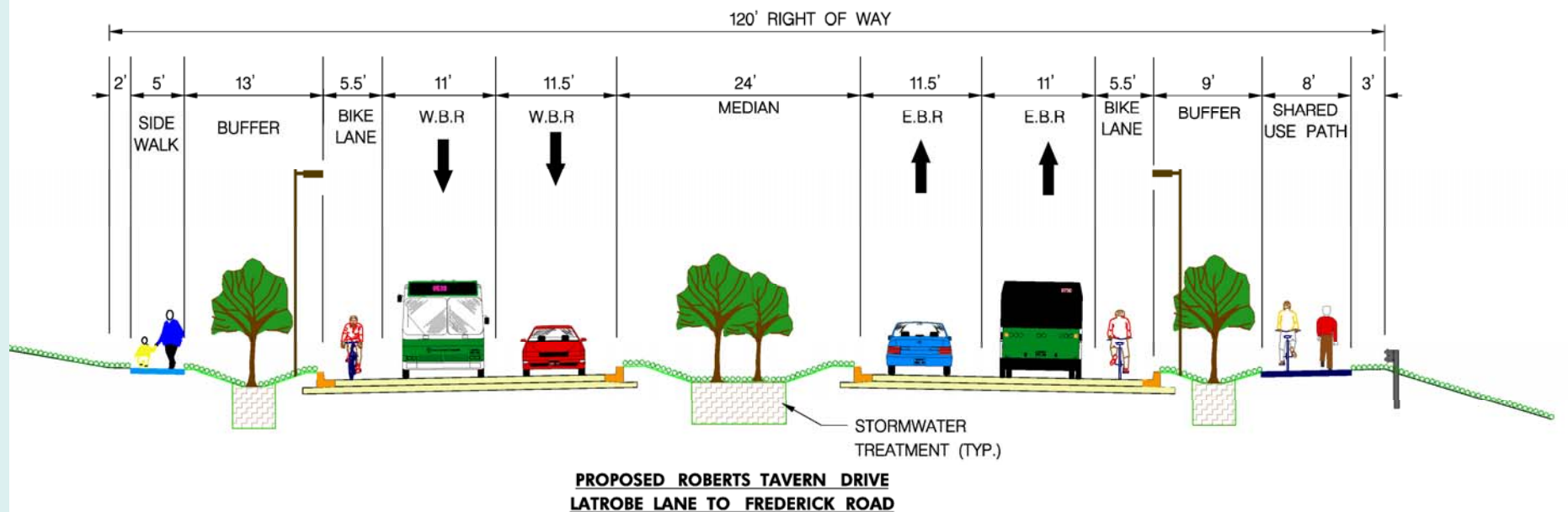
PROPOSED ROBERTS TAVERN DRIVE
OBSERVATION DRIVE TO LATROBE LANE



Isiah Leggett
Montgomery County Executive

Facility Planning Study – Phase I
ROBERTS TAVERN DRIVE EXTENDED
From Existing Roberts Tavern Drive East Terminus
To Frederick Road (MD 355)

TYPICAL SECTION – LATROBE TO MD 355





Isiah Leggett

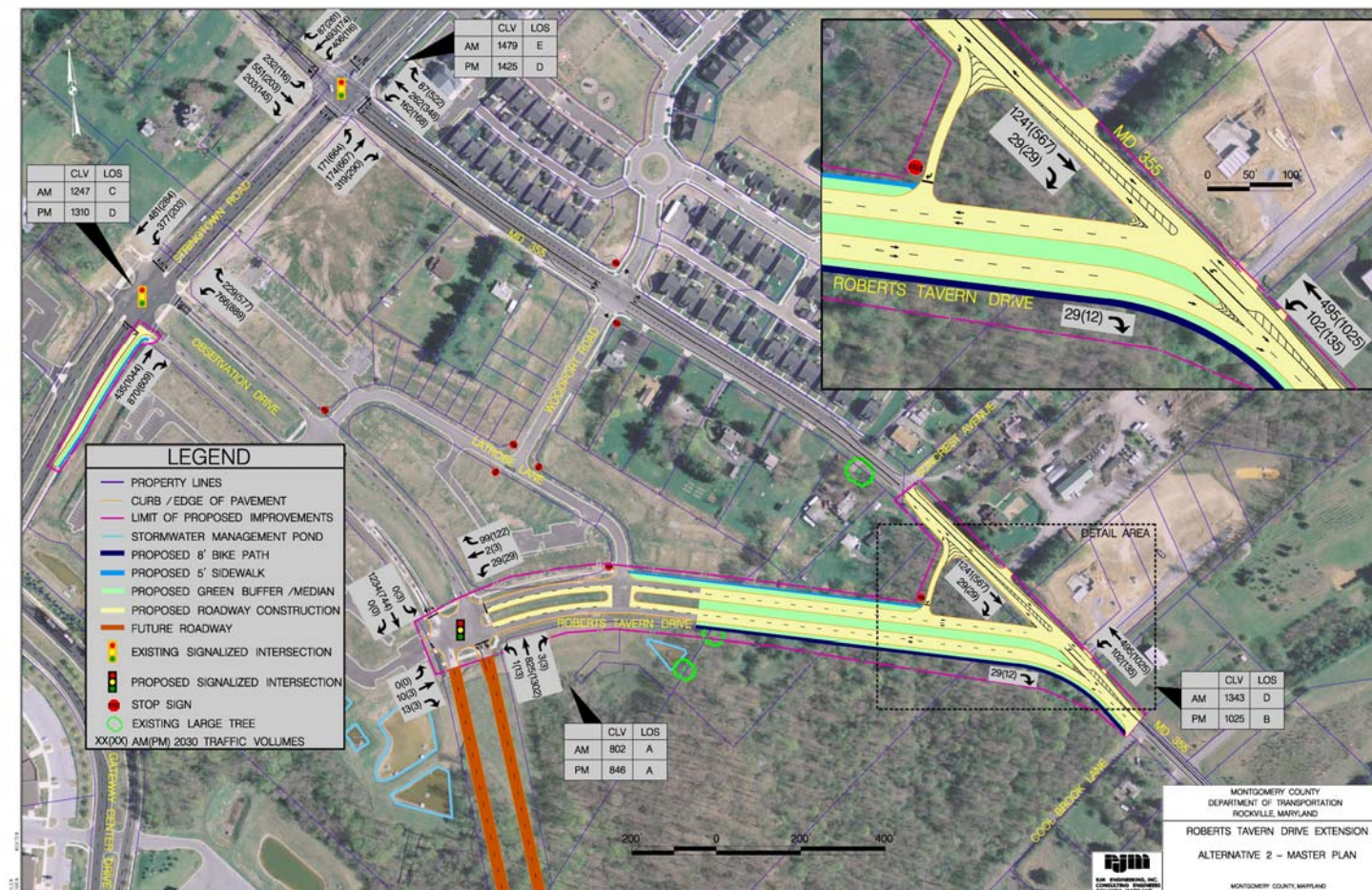
Montgomery County Executive

Facility Planning Study - Phase I

ROBERTS TAVERN DRIVE EXTENDED

From Existing Roberts Tavern Drive East Terminus
To Frederick Road (MD 355)

ALTERNATIVE 2 – Master Plan



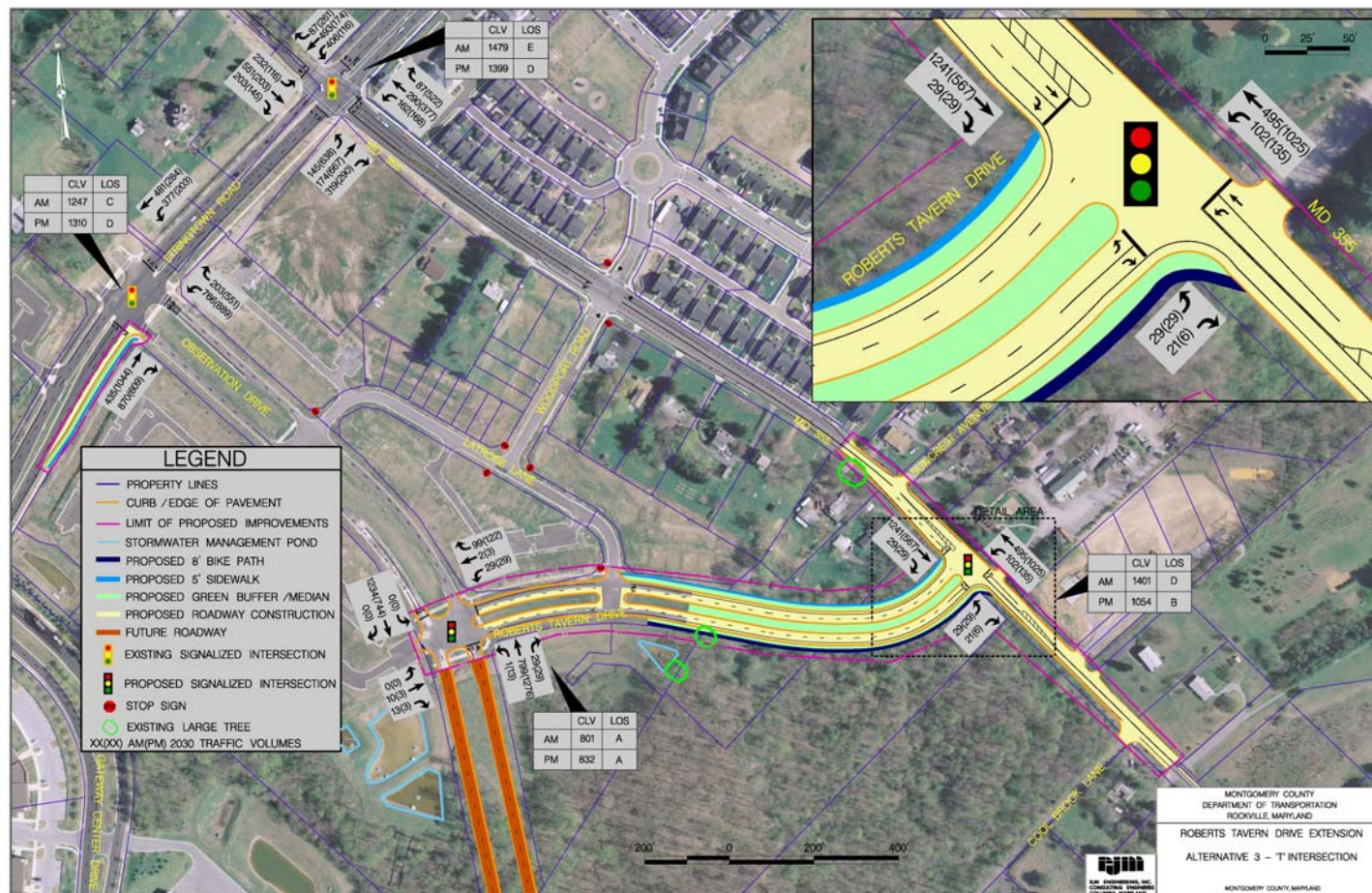


Isiah Leggett

Montgomery County Executive

Facility Planning Study - Phase I **ROBERTS TAVERN DRIVE EXTENDED** From Existing Roberts Tavern Drive East Terminus To Frederick Road (MD 355)

ALTERNATIVE 3 – 'T' Intersection





Isiah Leggett

Montgomery County Executive

Facility Planning Study - Phase I

ROBERTS TAVERN DRIVE EXTENDED

From Existing Roberts Tavern Drive East Terminus
To Frederick Road (MD 355)

ALTERNATIVE 4 – Master Plan (Mod)

