

WELCOME

MONTGOMERY COUNTY
DEPARTMENT OF TRANSPORTATION

REDLAND ROAD BRIDGE REPLACEMENT

VIRTUAL PUBLIC HEARING

JUNE 7, 2023

We will begin shortly. The Public Hearing will be recorded.

The logo for the Montgomery County Department of Transportation (MCDOT) is displayed in a bold, blue, sans-serif font. The letters 'M', 'C', and 'D' are connected, and the 'O' is a solid circle. The 'T' is also connected to the 'D'. The logo is set against a light blue background that features a stylized city skyline and various transportation modes like a bus, a person walking, a person on a bicycle, a pickup truck, a car, a person pushing a stroller, another person on a bicycle, and a van.

WELCOME

MONTGOMERY COUNTY
DEPARTMENT OF TRANSPORTATION

REDLAND ROAD BRIDGE REPLACEMENT

VIRTUAL PUBLIC HEARING

JUNE 7, 2023

The Public Hearing is being recorded.

The logo for Montgomery County Department of Transportation (MCDOT) is displayed in blue and green text.

PUBLIC HEARING FORMAT

- Cameras and microphones have been turned off to reduce the bandwidth of the meeting
- Verbal Testimony
 - Those who wish to testify will be asked to “raise hand” and unmuted when it is their turn to speak
 - “Raise hand” icon is located at the bottom of the screen under the “Reactions” button
- Written Testimony
 - May be submitted and will be considered with the same weight as oral testimony
- Questions and Answers will follow the Testimony Portion of the Hearing
 - “Raise hand” to ask a question or type it into the Chat Box by clicking “Chat” button on the bottom of screen



PURPOSE OF PUBLIC HEARING

Hearing held pursuant to Section 49-53 of the Montgomery County Code

- Obtain testimony regarding the potential project
- Comments/testimony should be focused entirely on the Redland Road Bridge Replacement project
- All interested persons are entitled to be heard at this hearing; however, the testimony portion of this hearing is not a forum for dialogue, questions and answers, or cross-examination

The logo for Montgomery County Department of Transportation (MCDOT) is displayed in the bottom right corner. It consists of the letters 'MCDOT' in a bold, sans-serif font. The 'M' and 'C' are blue, while the 'D', 'O', and 'T' are green. The letters are slightly shadowed to give a 3D effect.

MCDOT



PUBLIC HEARING RECORD

The Public Hearing Record will remain open for two weeks to allow any person an opportunity to have their comments included.

Official Closing Date for Comments and Testimony
Friday, July 7, 2023
At 6:30 PM

Submissions can be made via:

E-mail

Angel.Cheng@montgomerycountymd.gov

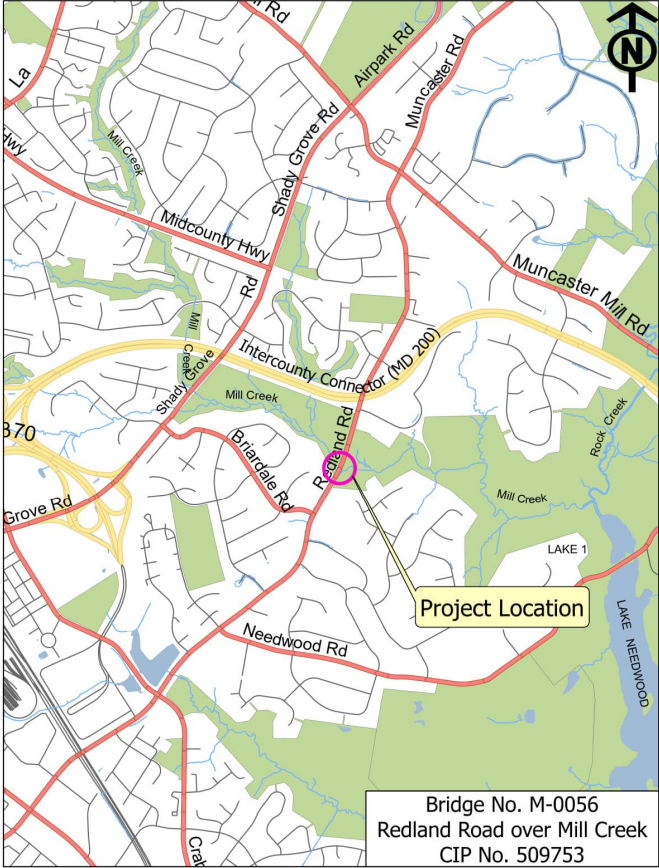
OR

Online comment form on the project website
<https://tinyurl.com/Redland-Bridge-Comments>

The logo for Montgomery County Department of Transportation (MCDOT) is displayed in a bold, blue, sans-serif font.

Bridge Replacement on Redland Road

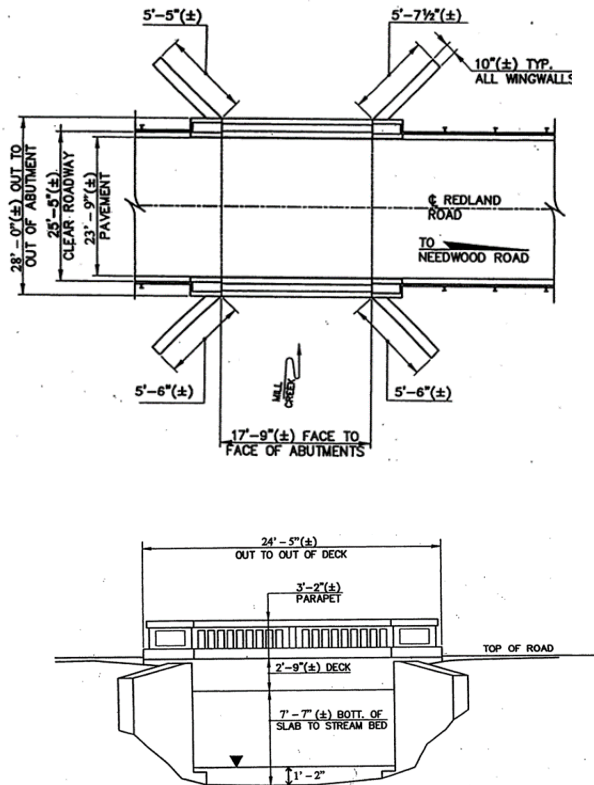
Over Mill Creek



DISPLAY A – Project Location



EXISTING BRIDGE



- Constructed in 1925
- 24'-5" +/- long single-span reinforced concrete slab with asphalt wearing surface
- 2-lane 23'-9" +/- clear roadway
- 1'-4" architectural concrete parapet on both sides

DISPLAY B – Existing Bridge

MCDOT



EXISTING BRIDGE DETERIORATION

Delaminated Concrete



Spalled Concrete Railing



Undersized Bridge Opening

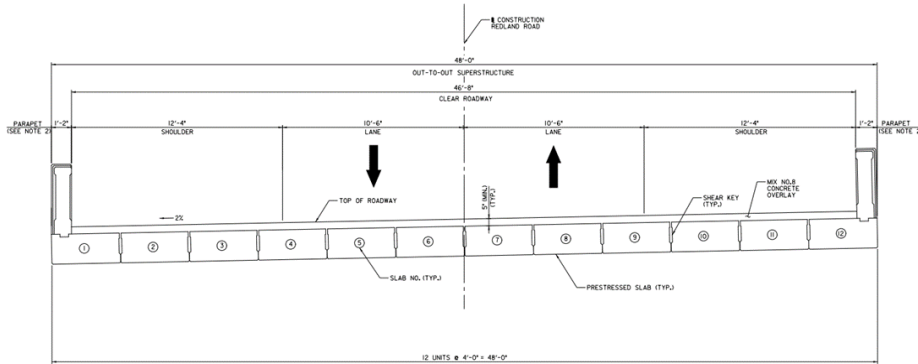
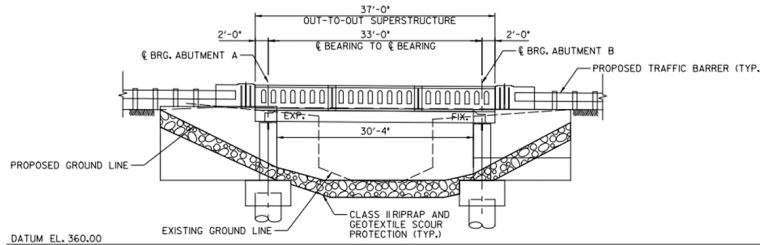


DISPLAY C – Existing Bridge Deterioration

MCDOT



SCOPE OF WORK



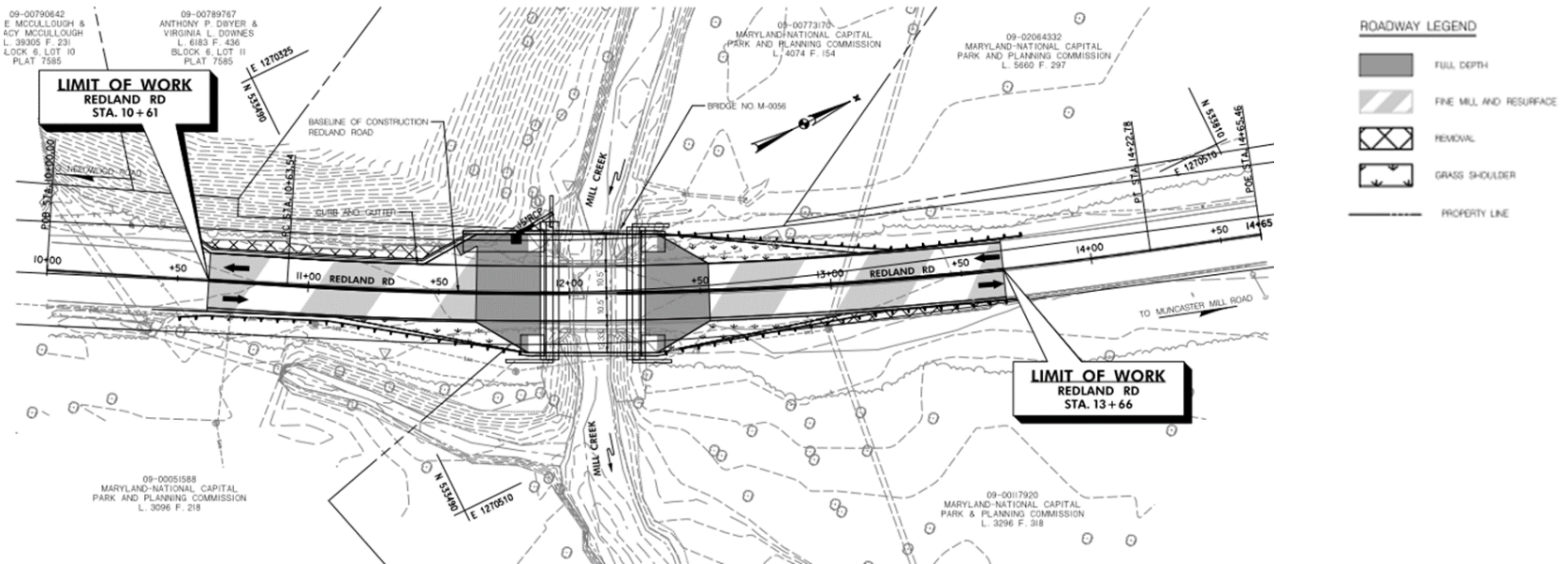
1. Install proposed structure
 - 37'-0" +/- long single-span prestressed concrete solid slab beams with concrete wearing surface structure
 - 2-lane 46-foot clear roadway with shoulders to accommodate future 14'-0" shared use path
 - 1'-1" ornamental concrete parapet on both sides

DISPLAY D-1 – Scope of Work



SCOPE OF WORK

2. Resurface/repave asphalt roadway approaches

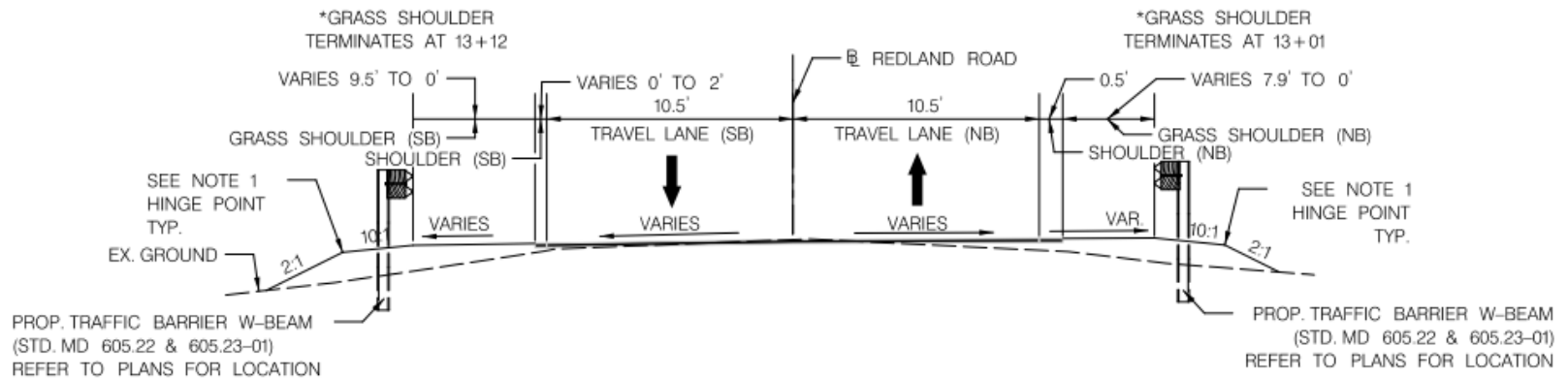


DISPLAY D-2a – Scope of Work



SCOPE OF WORK

2. Resurface/repave asphalt roadway approaches

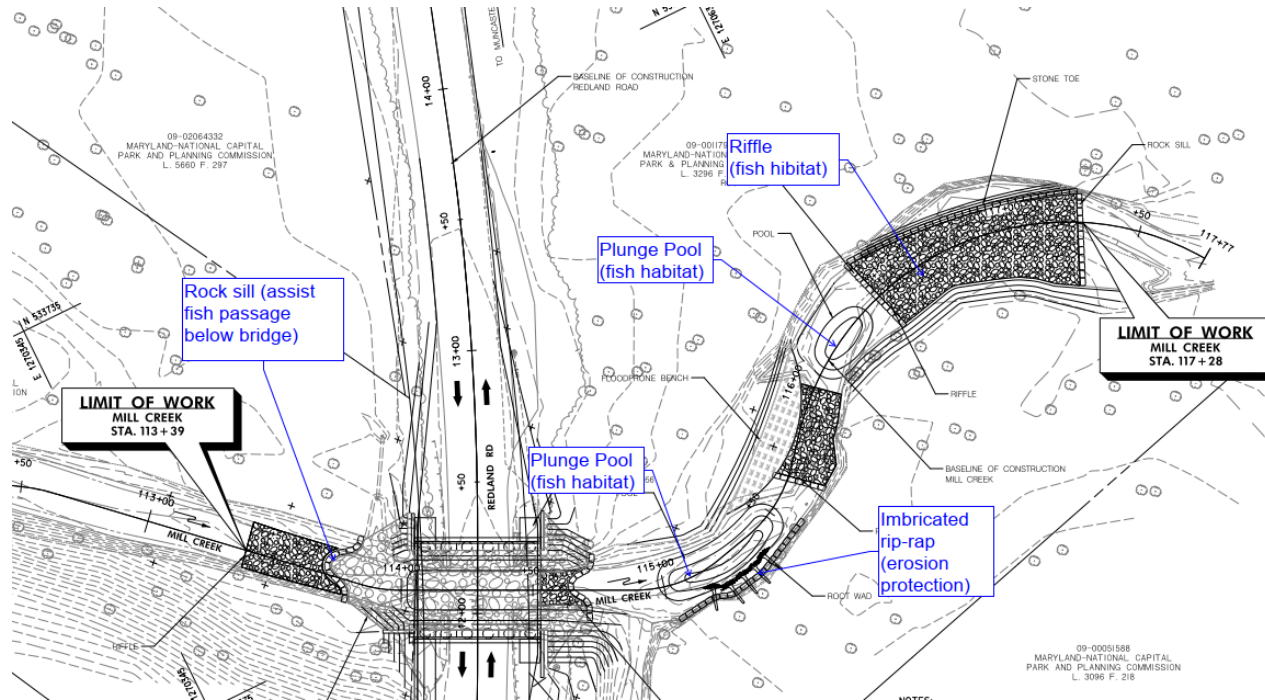


DISPLAY D-2b – Scope of Work



SCOPE OF WORK

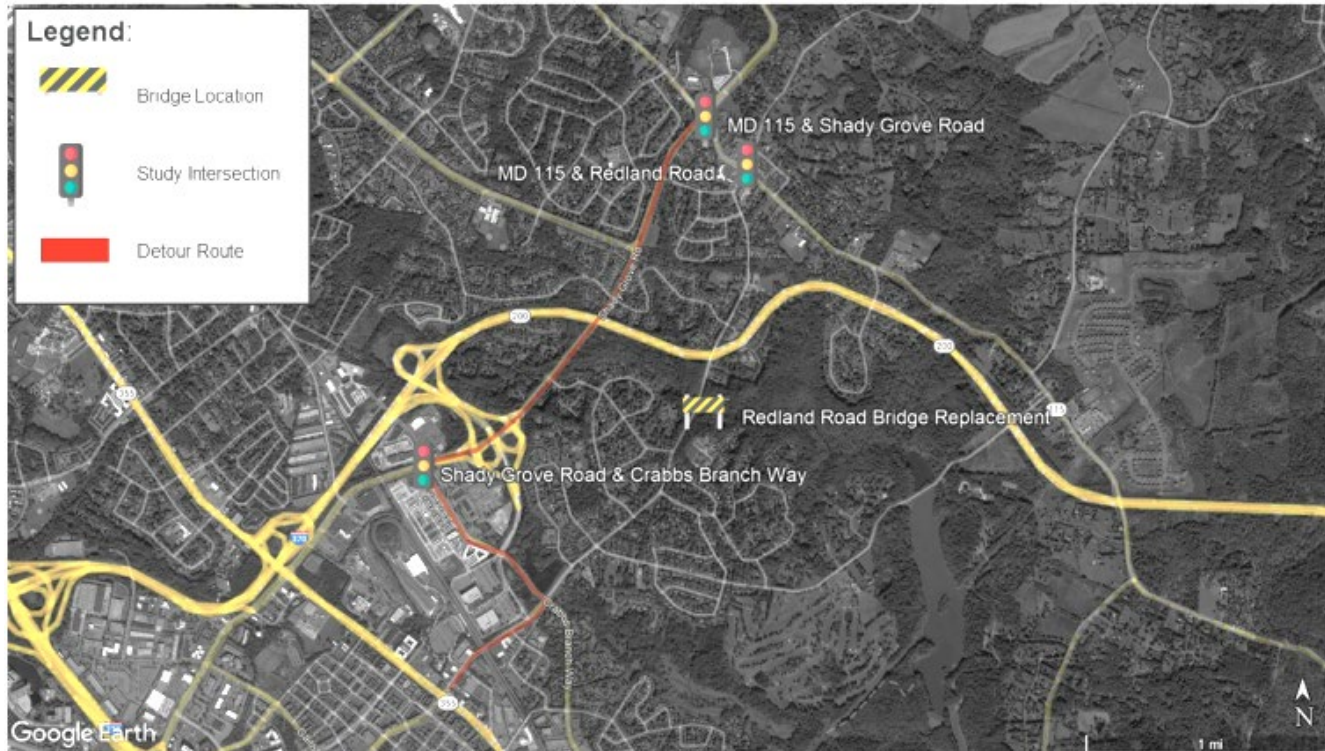
3. Stream Restoration



DISPLAY D-3 – Scope of Work



MAINTENANCE OF TRAFFIC



DISPLAY E – Maintenance of Traffic During Construction

MCDOT



COST AND ASSESSMENTS

- Total project cost currently estimated at \$3.5M
- Project Cost includes:
 - Engineering
 - Land Acquisition (Permanent and Temporary Construction Easements)
 - Site Improvements
 - Utility Relocations
 - Construction
- No properties are considered to be specially benefitted by the proposed improvement
- Project Schedule
 - Design Fall 2021 – Summer 2024
 - Construction Summer 2025



PUBLIC RECORD

- Exhibits included in the Public Record Binder:
 1. Office of Management & Budget; Redland Road Bridge M-0056 Replacement
 2. Replacement of Bridge M-0056 Redland Road Over Mill Creek 60% Design Plans
 3. The 2019 Biennial Bridge Inspection Report
 4. Written Testimony regarding the Redland Road Bridge Replacement proposal provided prior to and after this Public Hearing
 5. Washington Times newspaper and online advertisement proof
 6. List of Attendees, to be added following this Public Hearing
 7. Hearing Transcript; to be added following this Public Hearing
- Project-related data and files will be available on project website



MC DOT

PUBLIC TESTIMONY

- Cameras and microphones have been turned off to reduce the bandwidth of the meeting
- Verbal Testimony
 - Those who wish to testify will be asked to “raise hand” and called on in the order their hands are raised.
 - You will be unmuted when it is your turn to speak
 - **Once given speaking rights, please clearly provide your name and address for the record prior to beginning your testimony**
- Written Testimony
 - Will be considered with the same weight as oral testimony and can be submitted via:
 - E-mail: Angel.Cheng@montgomerycountymd.gov
 - Online comment form on the project website:
<https://www.montgomerycountymd.gov/dot-dte/projects/RedlandRoadBridge>

The logo for Montgomery County Department of Transportation (MCDOT) is displayed in the bottom right corner. It consists of the letters 'MCDOT' in a bold, sans-serif font. The 'M' and 'C' are blue, while the 'D' and 'O' are green, and the 'T' is blue. The background of the slide features a stylized illustration of a city skyline in light green and blue, with various modes of transportation including a bus, a person walking, a person on a bicycle, a pickup truck, a car, a person pushing a stroller, another person on a bicycle, and a van.

QUESTION AND ANSWER

- Cameras and microphones have been turned off to reduce the bandwidth of the meeting
- To ask a Question
 - Click on the status icon on the top menu bar that looks like a person with their hand raised or;
 - Type your question into the chat box on the bottom right corner of the screen

The logo for Michigan Center for Design and Operations (MCDOT) is displayed in a bold, blue, sans-serif font. The letters 'M', 'C', and 'D' are connected, and the 'O' is a solid circle. The logo is positioned in the upper right corner of a blue horizontal band that spans the width of the slide.

MCDOT



THANK YOU FOR ATTENDING

The Public Hearing Record will remain open for two weeks to allow any person an opportunity to have their comments included.

Official Closing Date for Comments and Testimony
Friday, July 7, 2023
At 6:30 PM

Submissions can be made via:

E-mail

Angel.Cheng@montgomerycountymd.gov

OR

Online comment form on the project website
<https://tinyurl.com/Redland-Bridge-Comments>

The logo for Montgomery County Department of Transportation (MCDOT) is displayed in a bold, blue, sans-serif font. The letters 'M', 'C', and 'D' are connected, and the 'O' is a solid circle. The logo is positioned in the upper right corner of a decorative blue banner at the bottom of the slide.

MCDOT

