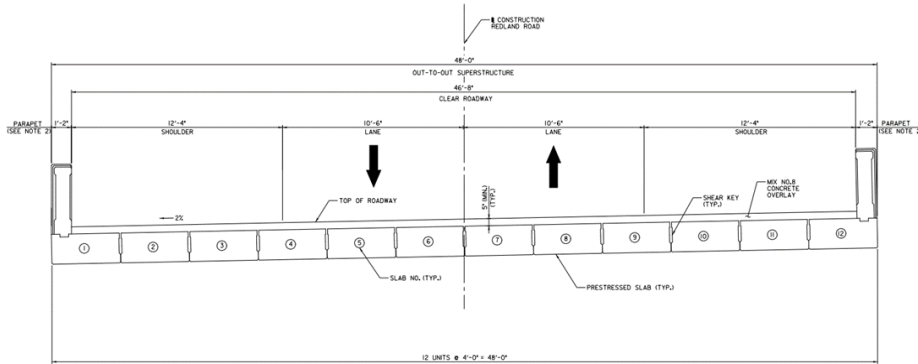
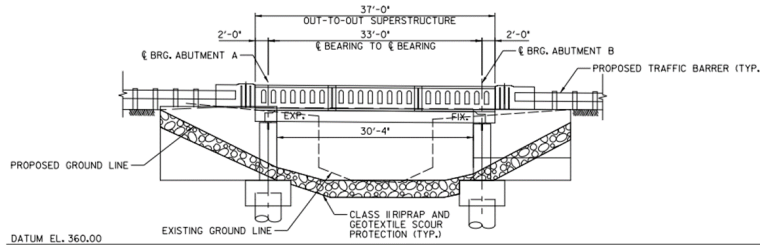


SCOPE OF WORK



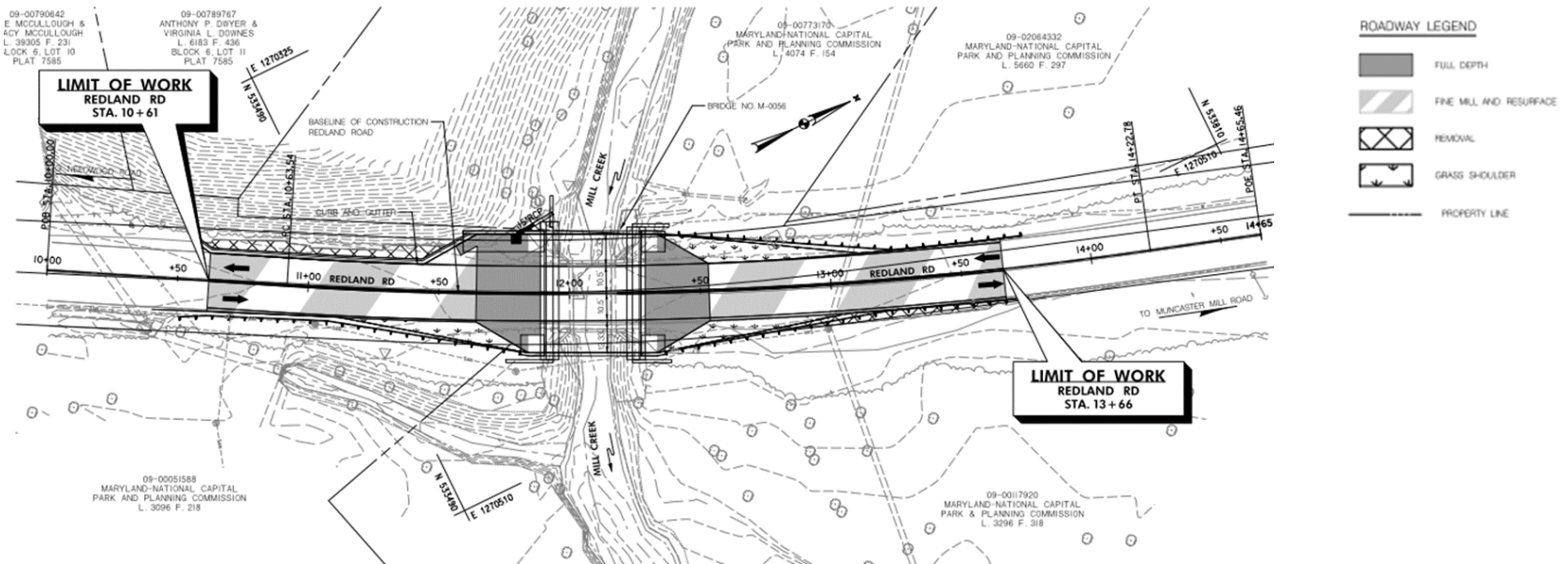
1. Install proposed structure
 - 37'-0" +/- long single-span prestressed concrete solid slab beams with concrete wearing surface structure
 - 2-lane 46-foot clear roadway with shoulders to accommodate future 14'-0" shared use path
 - 1'-1" ornamental concrete parapet on both sides

DISPLAY D-1 – Scope of Work



SCOPE OF WORK

2. Resurface/repave asphalt roadway approaches

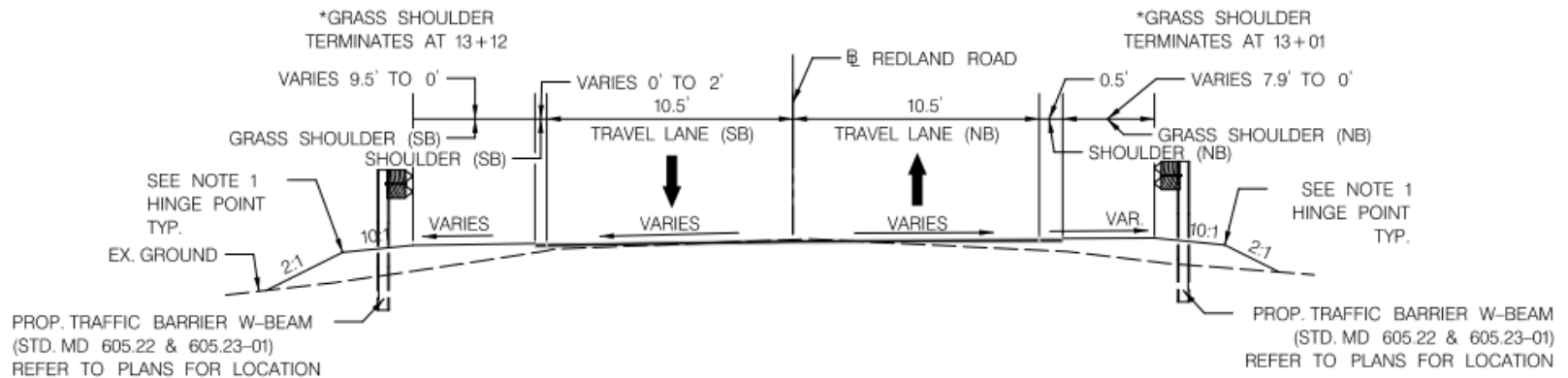


DISPLAY D-2a – Scope of Work



SCOPE OF WORK

2. Resurface/repave asphalt roadway approaches

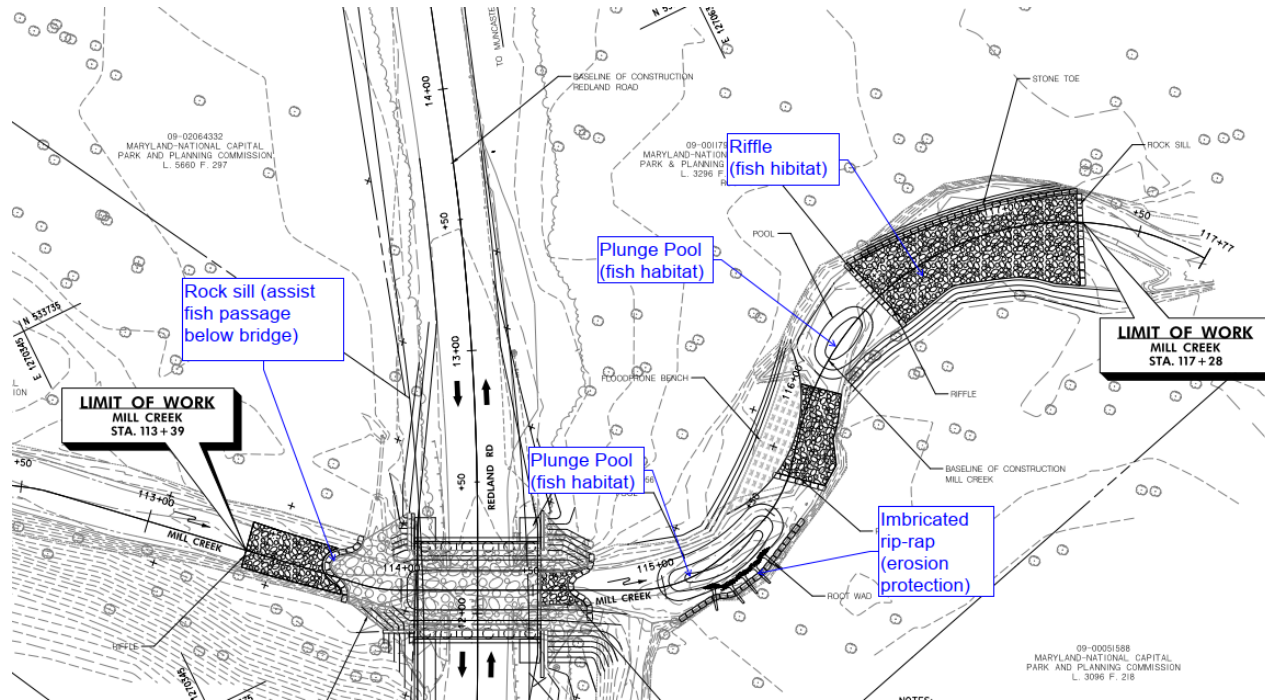


DISPLAY D-2b – Scope of Work



SCOPE OF WORK

3. Stream Restoration



DISPLAY D-3 – Scope of Work

