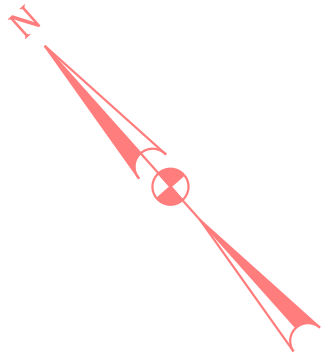


11/27/2024 P:\Projects\1908\1908.16 Sidewalks Countywide\04 Piney Branch\10 CADD\Civil\CARROLL AVE\pdpd-POOL LONG BRANCH PKWY AND CARROLL AVE.dgn



LEGEND

- |  |  |  |                |
|--|--|--|----------------|
|  | 5 INCH CONCRETE SIDEWALK                 |  | NEW CURB       |
|  | CONCRETE REMOVAL                         |  | RIGHT OF WAY   |
|  | 8 INCH PORTLAND CEMENT CONCRETE DRIVEWAY |  | ADA RAMP       |
|  | DETECTABLE WARNING SURFACE               |  | RETAINING WALL |

NOTE: SIDEWALKS SHOWN ARE FOR CONCEPT LOCATIONS ONLY. SIDEWALK BUFFERS MAY VARY AND CURB RADII MAY BE REDUCED TO MEET MONTGOMERY COUNTY COMPLETE STREETS DESIGN GUIDELINES. HAND EXCAVATION IS REQUIRED WHERE FLEXIBLE CONCRETE IS PROPOSED TO PROTECT THE ADJACENT TREE ROOTS.



NO.	REVISION	DATE	BY

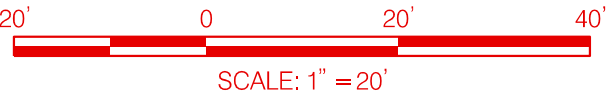
TAKOMA-LANGLEY  
PURPLE LINE STATION  
SIDEWALK IMPROVEMENTS  
LONG BRANCH PKWY  
AND  
CARROLL AVE

SCALE : 1" = 20'-0"      DATE : NOVEMBER, 2024

SHEET 01 of 07



11/27/2024 P:\Projects\1508\1508.16 Sidewalks Countywide\04 Piney Branch\10 CAD\DWG\10 CARROLL AVE\PHD-P002\_PROSPECT STREET.dgn



LEGEND

- |  |  |  |                |
|--|--|--|----------------|
|  | 5 INCH CONCRETE SIDEWALK                 |  | NEW CURB       |
|  | CONCRETE REMOVAL                         |  | RIGHT OF WAY   |
|  | 8 INCH PORTLAND CEMENT CONCRETE DRIVEWAY |  | ADA RAMP       |
|  | DETECTABLE WARNING SURFACE               |  | RETAINING WALL |

MATCH LINE- SEE SHEET 3

NOTE: SIDEWALKS SHOWN ARE FOR CONCEPT LOCATIONS ONLY. SIDEWALK BUFFERS MAY VARY AND CURB RADII MAY BE REDUCED TO MEET MONTGOMERY COUNTY COMPLETE STREETS DESIGN GUIDELINES. HAND EXCAVATION IS REQUIRED WHERE FLEXIBLE CONCRETE IS PROPOSED TO PROTECT THE ADJACENT TREE ROOTS.



NO.	REVISION	DATE	BY

TAKOMA-LANGLEY  
PURPLE LINE STATION  
SIDEWALK IMPROVEMENTS

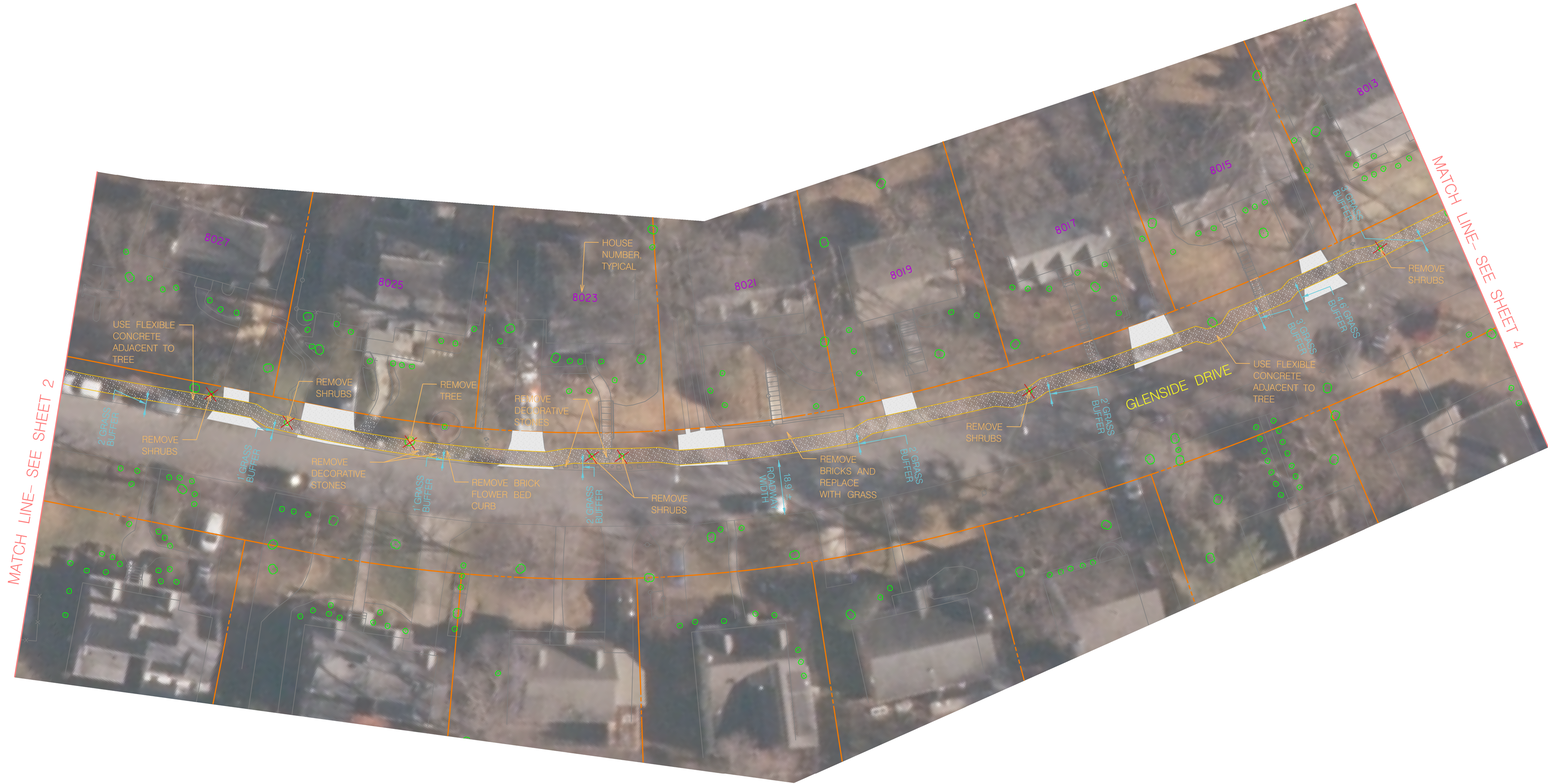
PROSPECT STREET

SCALE : 1" = 20'-0" DATE : NOVEMBER, 2024

SHEET 02 of 07



11/27/2024 P:\Projects\1908\1908.16 Sidewalks Countywide\04 Piney Branch\10 CADD\Civil\CARROLL AVE\pdp-P003\_GLENSIDE DRIVE.dgn



LEGEND

- 5 INCH CONCRETE SIDEWALK
- CONCRETE REMOVAL
- 8 INCH PORTLAND CEMENT CONCRETE DRIVEWAY
- DETECTABLE WARNING SURFACE
- NEW CURB
- RIGHT OF WAY
- ADA RAMP
- RETAINING WALL



NO.	REVISION	DATE	BY

NOTE: SIDEWALKS SHOWN ARE FOR CONCEPT LOCATIONS ONLY. SIDEWALK BUFFERS MAY VARY AND CURB RADII MAY BE REDUCED TO MEET MONTGOMERY COUNTY COMPLETE STREETS DESIGN GUIDELINES. HAND EXCAVATION IS REQUIRED WHERE FLEXIBLE CONCRETE IS PROPOSED TO PROTECT THE ADJACENT TREE ROOTS.

TAKOMA-LANGLEY  
PURPLE LINE STATION  
SIDEWALK IMPROVEMENTS

GLENSIDE DRIVE

SCALE : 1" = 20'-0"      DATE : NOVEMBER, 2024

SHEET 03 of 07



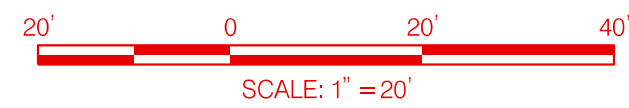
11/27/2024 P:\Projects\1508\1508.16 Sidewalks Countywide\04 Piney Branch\10 CADD\Civil\CARROLL AVE\p04-P004\_GLENSIDE DRIVE AND CARROLL AVE.dgn



LEGEND

- |  |  |  |                |
|--|--|--|----------------|
|  | 5 INCH CONCRETE SIDEWALK                 |  | NEW CURB       |
|  | CONCRETE REMOVAL                         |  | RIGHT OF WAY   |
|  | 8 INCH PORTLAND CEMENT CONCRETE DRIVEWAY |  | ADA RAMP       |
|  | DETECTABLE WARNING SURFACE               |  | RETAINING WALL |

NOTE: SIDEWALKS SHOWN ARE FOR CONCEPT LOCATIONS ONLY. SIDEWALK BUFFERS MAY VARY AND CURB RADII MAY BE REDUCED TO MEET MONTGOMERY COUNTY COMPLETE STREETS DESIGN GUIDELINES. HAND EXCAVATION IS REQUIRED WHERE FLEXIBLE CONCRETE IS PROPOSED TO PROTECT THE ADJACENT TREE ROOTS.



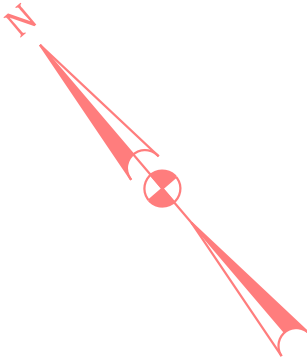
NO.	REVISION	DATE	BY

TAKOMA-LANGLEY PURPLE LINE STATION SIDEWALK IMPROVEMENTS	
GLENSIDE DRIVE AND CARROLL AVE	
SCALE : 1" = 20'-0"	DATE : NOVEMBER, 2024
SHEET 04 of 07	



11/27/2024 P:\Projects\1908\1908.16 Sidewalks Countywide\04 Piney Branch\10 CADD\Civil\CARROLL AVE\pdp-P005- BARRON STREET.dgn

MAATCH LINE- SEE SHEET 2



MATCH LINE- SEE SHEET 6

LEGEND

- 5 INCH CONCRETE SIDEWALK
- CONCRETE REMOVAL
- 8 INCH PORTLAND CEMENT CONCRETE DRIVEWAY
- DETECTABLE WARNING SURFACE
- NEW CURB
- RIGHT OF WAY
- ADA RAMP
- RETAINING WALL

NOTE: SIDEWALKS SHOWN ARE FOR CONCEPT LOCATIONS ONLY. SIDEWALK BUFFERS MAY VARY AND CURB RADII MAY BE REDUCED TO MEET MONTGOMERY COUNTY COMPLETE STREETS DESIGN GUIDELINES. HAND EXCAVATION IS REQUIRED WHERE FLEXIBLE CONCRETE IS PROPOSED TO PROTECT THE ADJACENT TREE ROOTS.



NO.	REVISION	DATE	BY

TAKOMA-LANGLEY  
PURPLE LINE STATION  
SIDEWALK IMPROVEMENTS

BARRON STREET

SCALE : 1" = 20'-0"      DATE : NOVEMBER, 2024

SHEET 05 of 07





LEGEND

- |  |  |  |                |
|--|--|--|----------------|
|  | 5 INCH CONCRETE SIDEWALK                 |  | NEW CURB       |
|  | CONCRETE REMOVAL                         |  | RIGHT OF WAY   |
|  | 8 INCH PORTLAND CEMENT CONCRETE DRIVEWAY |  | ADA RAMP       |
|  | DETECTABLE WARNING SURFACE               |  | RETAINING WALL |

NOTE: SIDEWALKS SHOWN ARE FOR CONCEPT LOCATIONS ONLY. SIDEWALK BUFFERS MAY VARY AND CURB RADII MAY BE REDUCED TO MEET MONTGOMERY COUNTY COMPLETE STREETS DESIGN GUIDELINES. HAND EXCAVATION IS REQUIRED WHERE FLEXIBLE CONCRETE IS PROPOSED TO PROTECT THE ADJACENT TREE ROOTS.



NO.	REVISION	DATE	BY

TAKOMA-LANGLEY  
PURPLE LINE STATION  
SIDEWALK IMPROVEMENTS

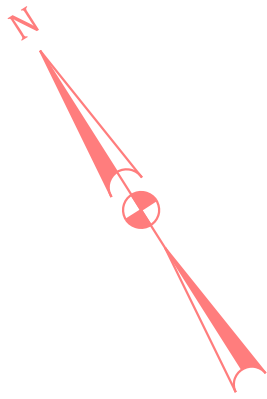
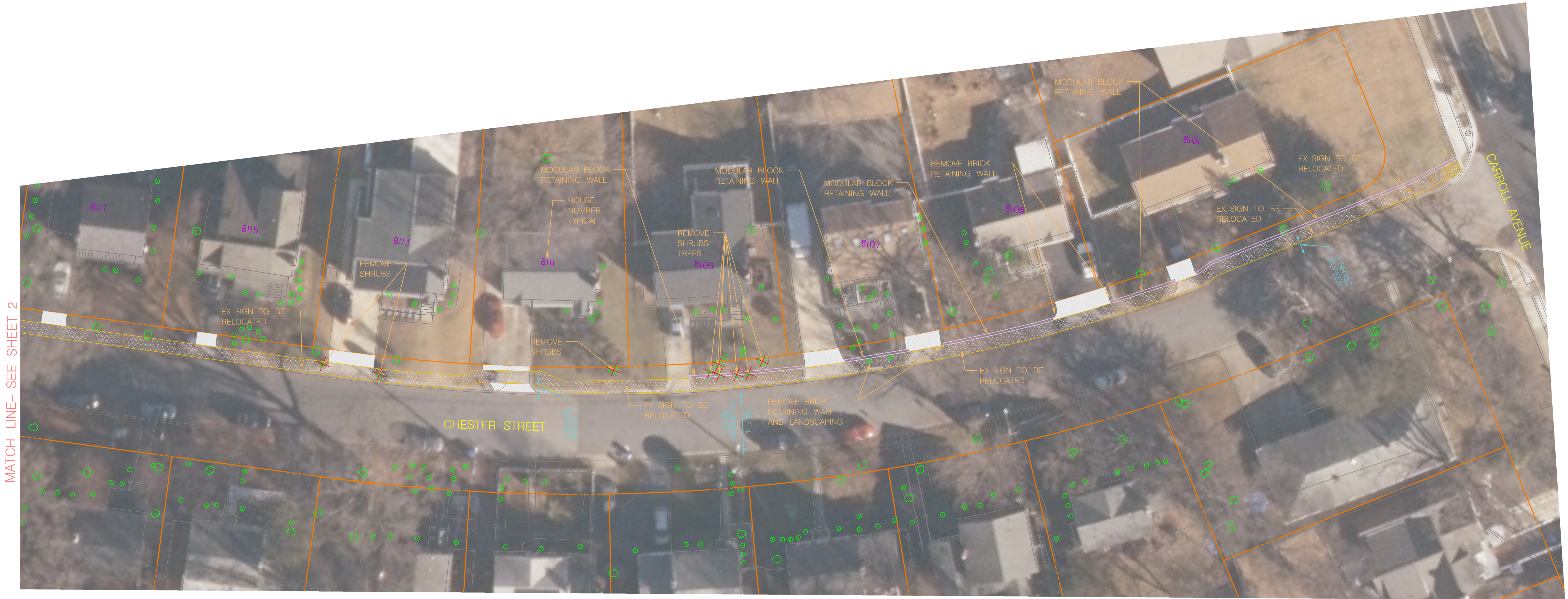
BARRON STREET AND CARROLL AVE

SCALE : 1" = 20'-0"      DATE : NOVEMBER, 2024

SHEET 06 of 07



11/27/2024 P:\Projects\1508\1508.6 Sidewalks Countywide\04 Piney Branch\10 CADD\Civil\CARROLL AVE\pdp-P007 - CHESTER STREET.dgn



LEGEND

- |  |  |  |                |
|--|--|--|----------------|
|  | 5 INCH CONCRETE SIDEWALK                 |  | NEW CURB       |
|  | CONCRETE REMOVAL                         |  | RIGHT OF WAY   |
|  | 8 INCH PORTLAND CEMENT CONCRETE DRIVEWAY |  | ADA RAMP       |
|  | DETECTABLE WARNING SURFACE               |  | RETAINING WALL |

NOTE: SIDEWALKS SHOWN ARE FOR CONCEPT LOCATIONS ONLY. SIDEWALK BUFFERS MAY VARY AND CURB RADII MAY BE REDUCED TO MEET MONTGOMERY COUNTY COMPLETE STREETS DESIGN GUIDELINES. HAND EXCAVATION IS REQUIRED WHERE FLEXIBLE CONCRETE IS PROPOSED TO PROTECT THE ADJACENT TREE ROOTS.



NO.	REVISION	DATE	BY

TAKOMA-LANGLEY  
PURPLE LINE STATION  
SIDEWALK IMPROVEMENTS

CHESTER STREET

SCALE : 1" = 20'-0"      DATE : NOVEMBER, 2024

SHEET 07 of 07