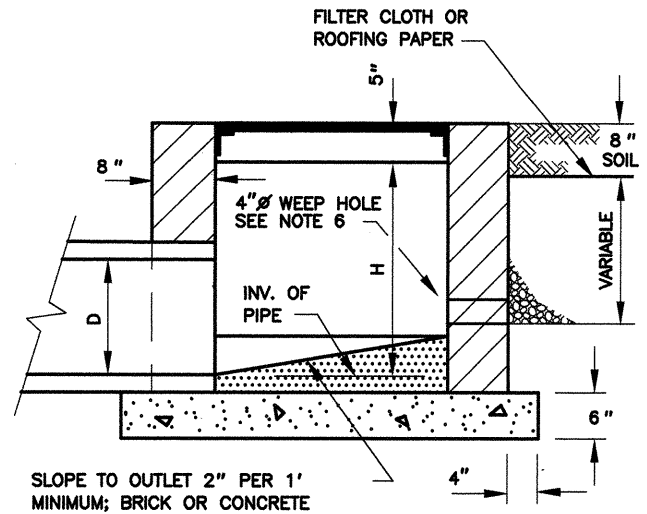
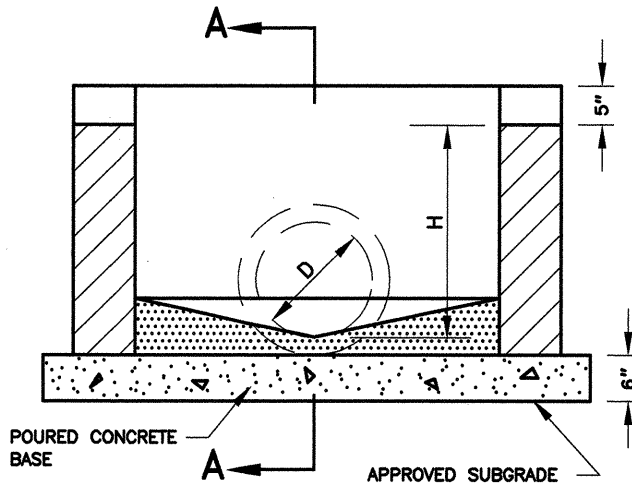


D	L	H
15"	4' - 0"	2' - 6"
18"	4' - 0"	2' - 9"
21"	4' - 6"	3' - 0"
24"	5' - 0"	3' - 3"
27"	5' - 6"	3' - 7"
30"	6' - 0"	3' - 10"
33"	6' - 0"	4' - 1"
36"	6' - 0"	4' - 4"



SECTION A-A

GENERAL NOTES

1. REFER TO MARYLAND STATE HIGHWAY ADMINISTRATION SPECIFICATIONS FOR MATERIALS AND METHODS OF CONSTRUCTION.
2. PROVIDE GRATE PER M.S.H.A. STD. NO. MD-377.02 MODIFIED WITH BARS 3" O.C.; TACK WELD IN PLACE.
3. CONSTRUCTION TO BE OF CONCRETE OR BRICK MASONRY.
4. STEEL VERTICAL 1/2" ϕ BARS, 6" C.C., HORIZONTAL 1/2" ϕ BARS, 6" C.C.; BOTTOM 1/2" ϕ BARS 6" C.C. EACH WALL, 2" MIN. COVER. (WITH CONCRETE CONSTRUCTION)
5. MORTAR SHALL CONFORM TO ASTM SPECIFICATION C270 TYPE M.
6. WEEP HOLES TO BE PLACED IN WALL OPPOSITE OUTLET PIPE 5" ABOVE PIPE INVERT. COVER OPENING WITH 1/2" HARDWARE CLOTH. INSTALL FOUNDATION DRAINAGE MATERIAL AROUND STRUCTURE FROM BOTTOM OF WEEP HOLES TO WITHIN 8" OF SURFACE FOR A THICKNESS OF 12" MINIMUM.
7. BRICK SHALL CONFORM TO AASHTO DESIGNATION M-114 GRADE SW.
8. $f'c = 3500$ PSI AT 28 DAYS.
9. PARGE OUTSIDE WALLS.

P:\ADT\STDA\MC506.02 6-24-94 9:42:37 a.m. EST

APPROVED <u>JAN 5 1995</u> DATE DIRECTOR, DEPT. OF TRANS. CHIEF, DIV. OF ENG. SERVICES	REVISED <hr/> <hr/> <hr/> <hr/> <hr/> <hr/> <hr/> <hr/>	MONTGOMERY COUNTY DEPARTMENT OF TRANSPORTATION "J" INLET AS A TERMINUS STANDARD NO. MC-506.02
---	--	---