



# MONTGOMERY COUNTY EXECUTIVE ORDER

Offices of the County Executive • 101 Monroe Street • Rockville, Maryland 20850

Subject Fire Lane Establishment Order for Village West	Executive Order No. 113-13	Subject Suffix
Originating Department Montgomery County Fire and Rescue Service	Department Number MCFRS 17-13	Effective Date 6/20/2013

### Fire Lane Establishment Order

Pursuant to Section 22 - 33, Montgomery County Code, 1971, as amended, you are hereby notified that a Fire Lane has been established as described in this order. You are hereby ordered to post fire lane signs and paint curbs/pavement (painting optional) as identified below. When signs and paint work (painting optional) have been completed, this order will authorize the enforcement of this Fire Lane by appropriate police and fire officials. Compliance with this order must be achieved within 30 days of receipt.

LOCATION: Vaughn Landing Dr., Tiber Falls Way, 19520 Waters Rd.  
\_\_\_\_\_  
\_\_\_\_\_

All areas where indicated by signs and paint.

- SIGNS - - (See attached diagram for location of sign placement)



\$250 FINE

FIRE LANE

Signs must be posted so that it is not possible to park a vehicle without being in sight of a sign. Signs may be no further apart than 100 feet

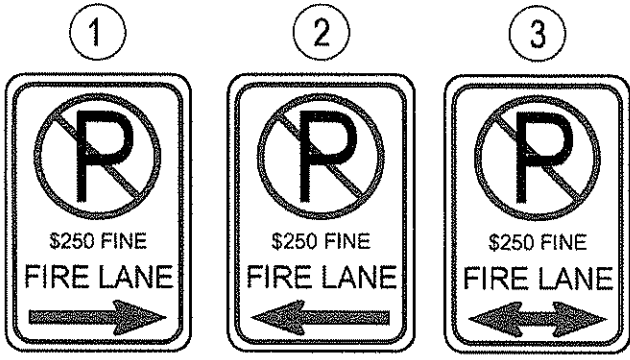
(Red letters on white background)

- PAINT - - (See attached diagram if painting).

Paint must be traffic yellow with lines of sufficient width to be readily identifiable/readable by motor vehicle operators.

\_\_\_\_\_  
Fire Chief, Montgomery County Fire and Rescue Service

The original of this drawing document was prepared by Loisderman Soltesz Associates, Inc. (LSA). If this document was not obtained directly from LSA and/or it was transmitted electronically, LSA cannot guarantee that unauthorized changes and / or alterations were not made by others. If verification of the information contained hereon is needed, contact should be made directly with LSA. LSA makes no warranties, express or implied, concerning the accuracy of any information that has been transmitted by electronic means.



**LEGEND**

-  FIRE HYDRANT LOCATIONS
-  NO PARKING/FIRE LANE SIGN
-  CURB PAINTING



MATCHLINE - SEE SHEET 2

MATCHLINE - SEE SHEET 3



**SOLTESZ**  
 2 Research Place, Suite 100  
 Rockville, MD 20850  
 P.301.948.2750 F.301.948.9067  
 www.solteszco.com

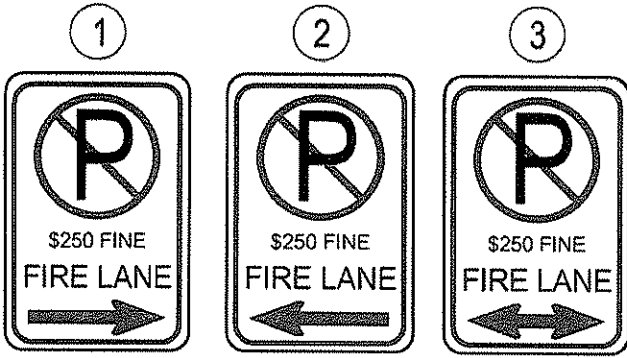
FIRE LANE SIGN PLAN  
**MARTENS PROPERTY**  
 GERMANTOWN (2nd) ELECTION DISTRICT  
 MONTGOMERY COUNTY, MARYLAND

SHEET 1  
 OF 8

JOB NO. 1896-0000 SCALE 1" = 80' DATE June 10, 2013

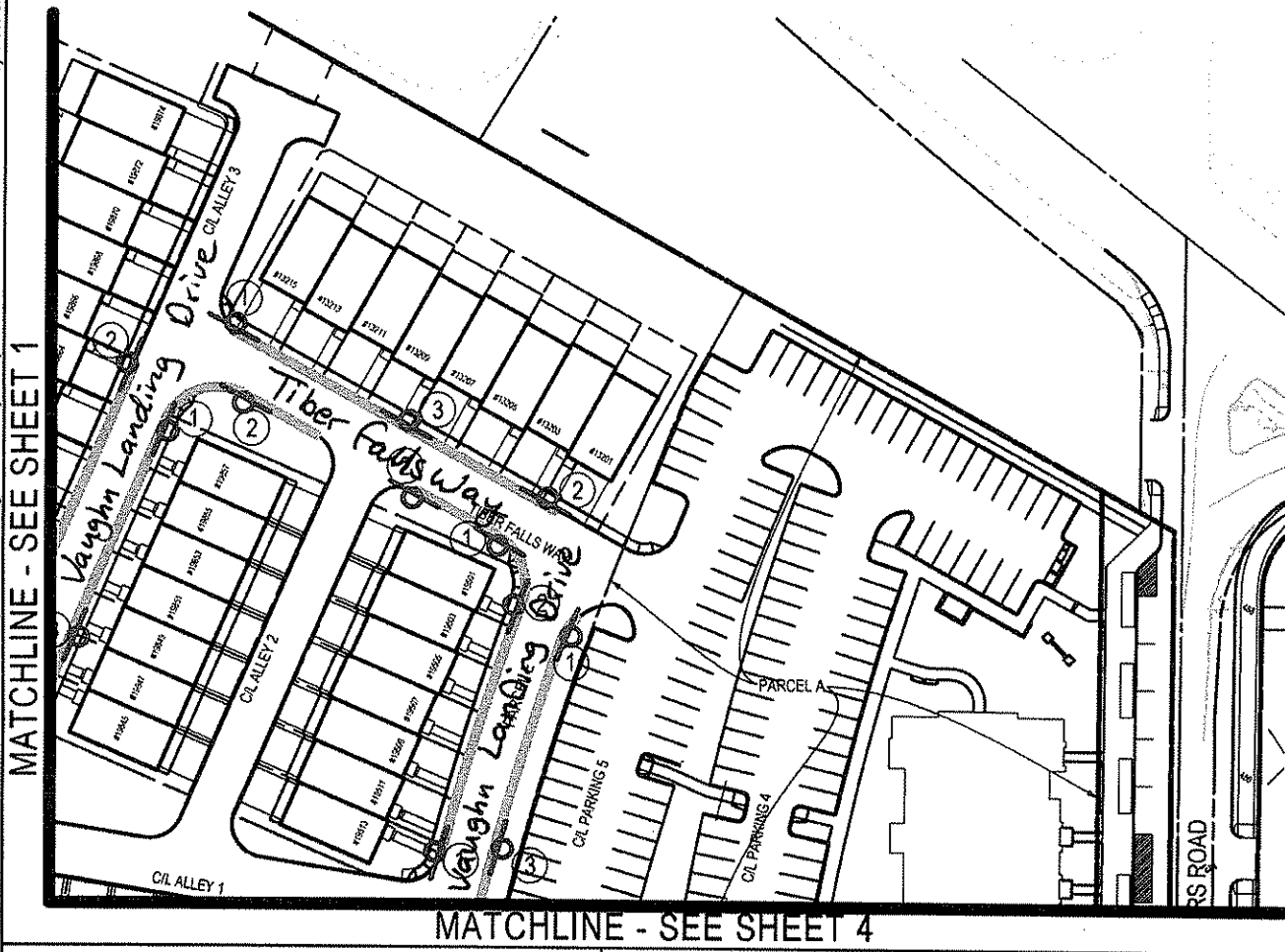
\$LSAPLOTCOMMENT\$

The original of this drawing document was prepared by Loiederman Soltesz Associates, Inc. (LSA). If this document was not obtained directly from LSA and/or it was transmitted electronically, LSA cannot guarantee that unauthorized changes and / or alterations were not made by others. If verification of the information contained hereon is needed, contact should be made directly with LSA. LSA makes no warranties, express or implied, concerning the accuracy of any information that has been transmitted by electronic means.



**LEGEND**

-  FIRE HYDRANT LOCATIONS
-  NO PARKING/FIRE LANE SIGN
-  CURB PAINTING



MATCHLINE - SEE SHEET 1

MATCHLINE - SEE SHEET 4



**SOLTESZ**  
 2 Research Place, Suite 100  
 Rockville, MD 20850  
 P.301.948.2750 F.301.948.9067  
 www.solteszco.com

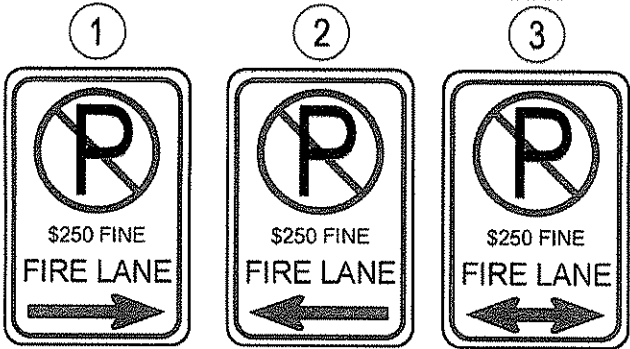
**FIRE LANE SIGN PLAN**  
**MARTENS PROPERTY**  
 GERMANTOWN (2nd) ELECTION DISTRICT  
 MONTGOMERY COUNTY, MARYLAND

SHEET 2  
 OF 8

JOB NO. 1896-0000      SCALE 1" = 80'      DATE June 10, 2013

\$1,500 PLOT COMMENTS

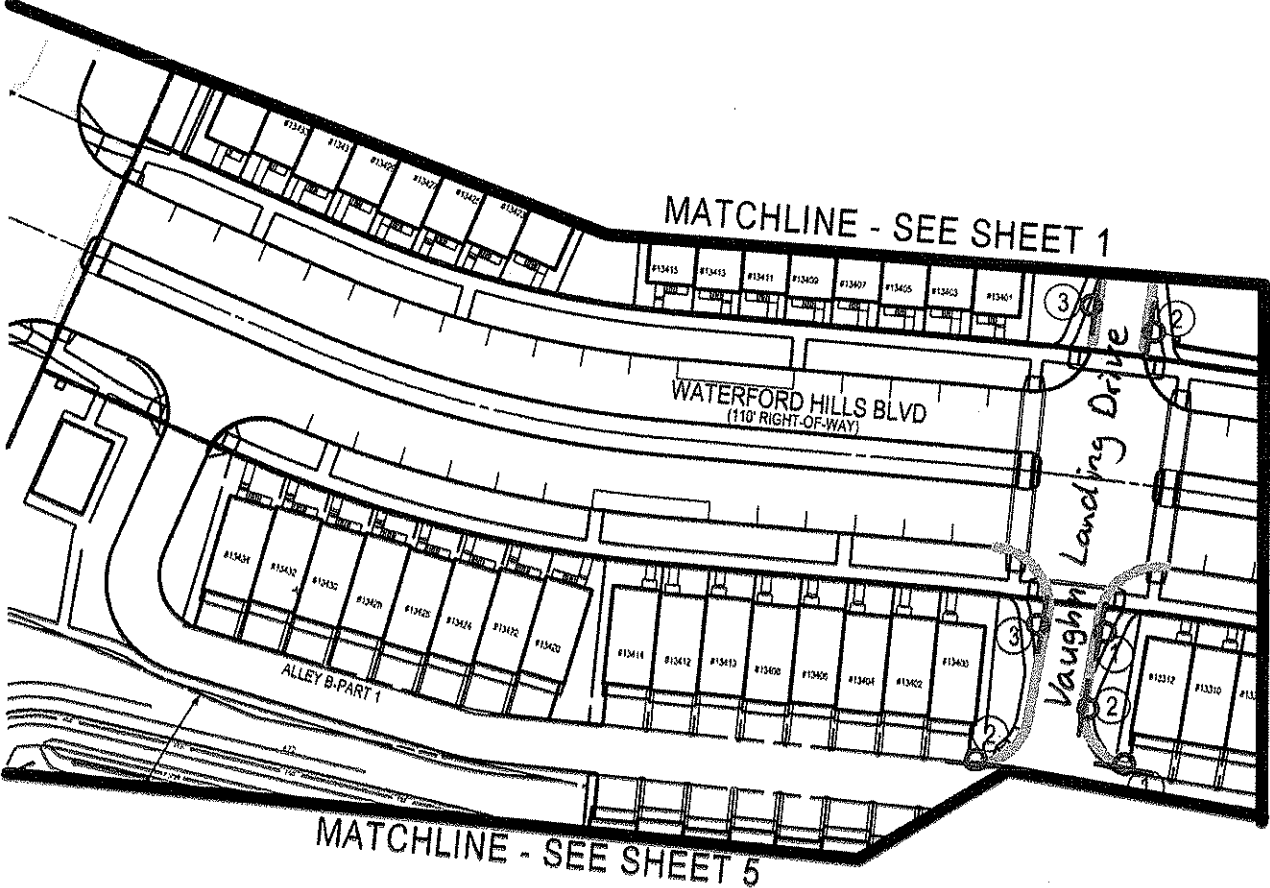
The original of this drawing document was prepared by Lovierman Soltesz Associates, Inc. (LSA). If this document was not obtained directly from LSA and/or it was transmitted electronically, LSA cannot guarantee that unauthorized changes and/or alterations were not made by others. If verification of the information contained hereon is needed, contact should be made directly with LSA. LSA makes no warranties, express or implied, concerning the accuracy of any information that has been transmitted by electronic means.



**LEGEND**

-  FIRE HYDRANT LOCATIONS
-  NO PARKING/FIRE LANE SIGN
-  CURB PAINTING

SCALE: 1" = 80'



**SOLTESZ**  
 2 Research Place, Suite 100  
 Rockville, MD 20850  
 P.301.948.2750 F.301.948.9067  
 www.solteszco.com

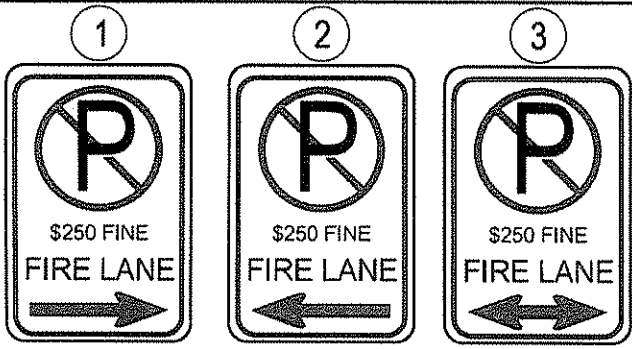
FIRE LANE SIGN PLAN  
**MARTENS PROPERTY**  
 GERMANTOWN (2nd) ELECTION DISTRICT  
 MONTGOMERY COUNTY, MARYLAND

SHEET 3  
 OF 6

JOB NO. 1896-0000 SCALE 1" = 80' DATE June 10, 2013

LSA PLOT COMMENTS

The original of this drawing document was prepared by Loiederman Soltesz Associates, Inc. (LSA). If this document was not obtained directly from LSA and/or it was transmitted electronically, LSA cannot guarantee that unauthorized changes and / or alterations were not made by others. If verification of the information contained hereon is needed, contact should be made directly with LSA. LSA makes no warranties, express or implied, concerning the accuracy of any information that has been transmitted by electronic means.



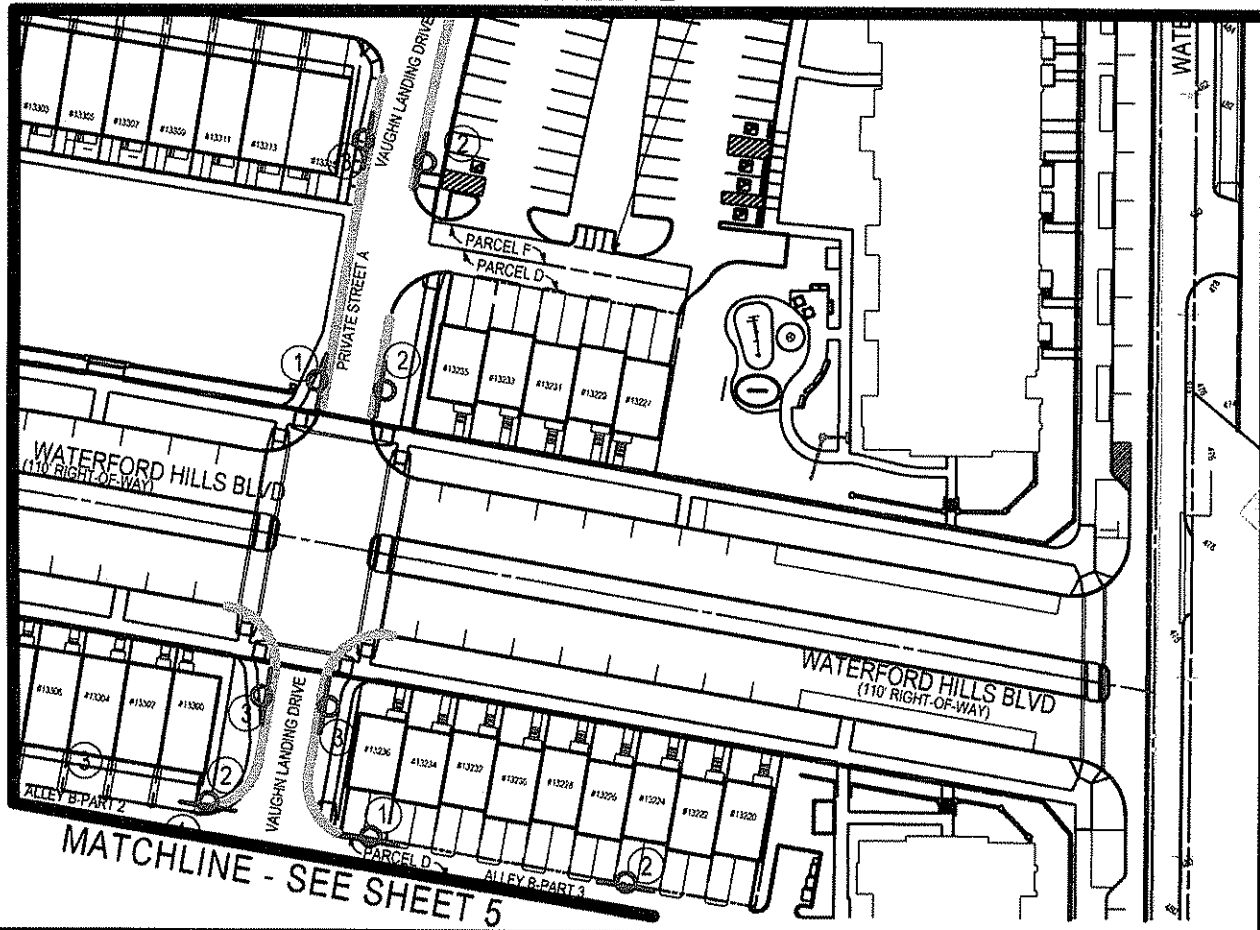
**LEGEND**

- FIRE HYDRANT LOCATIONS
- NO PARKING/FIRE LANE SIGN
- CURB PAINTING



MATCHLINE - SEE SHEET 2

MATCHLINE - SEE SHEET 3



MATCHLINE - SEE SHEET 5



**SOLTESZ**  
 2 Research Place, Suite 100  
 Rockville, MD 20850  
 P.301.948.2750 F.301.948.9067  
 www.solteszco.com

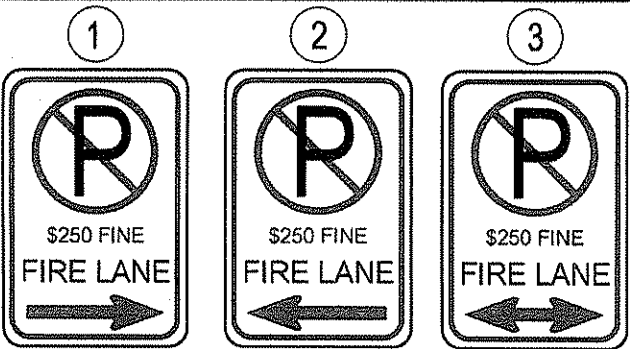
FIRE LANE SIGN PLAN  
**MARTENS PROPERTY**  
 GERMANTOWN (2nd) ELECTION DISTRICT  
 MONTGOMERY COUNTY, MARYLAND

SHEET 4  
 OF 8

JOB NO. 1896-0000 SCALE 1" = 80' DATE June 10, 2013

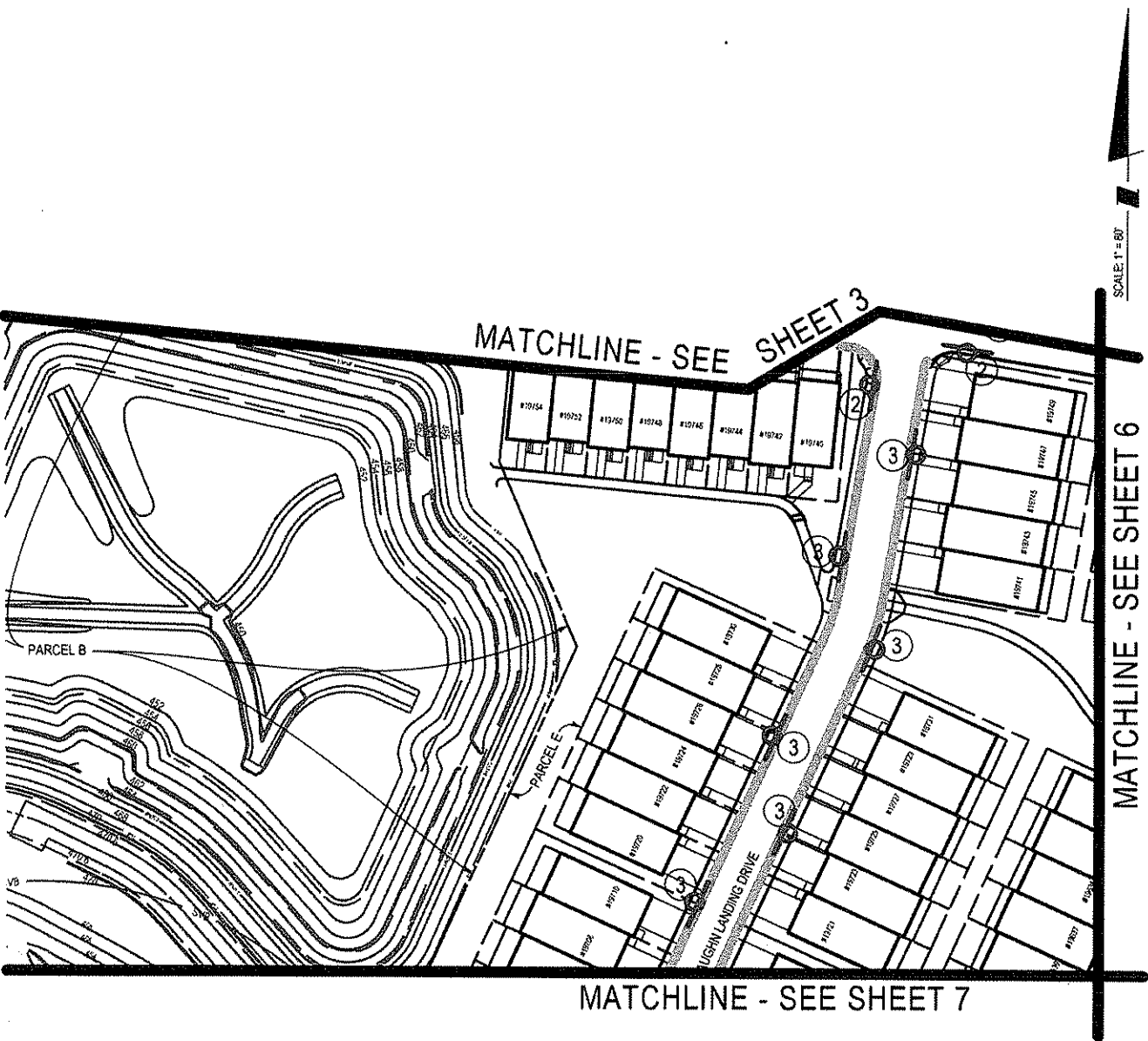
LSA PLOT COMMENTS

The original of this drawing document was prepared by Loiederman Soltesz Associates, Inc. (LSA), if this document was not obtained directly from LSA and/or it was transmitted electronically, LSA cannot guarantee that unauthorized changes and / or alterations were not made by others. If verification of the information contained hereon is needed, contact should be made directly with LSA. LSA makes no warranties, express or implied, concerning the accuracy of any information that has been transmitted by electronic means.



**LEGEND**

-  FIRE HYDRANT LOCATIONS
-  NO PARKING/FIRE LANE SIGN
-  CURB PAINTING



**SOLTESZ**  
 2 Research Place, Suite 100  
 Rockville, MD 20850  
 P.301.948.2750 F.301.948.9067  
 www.solteszco.com

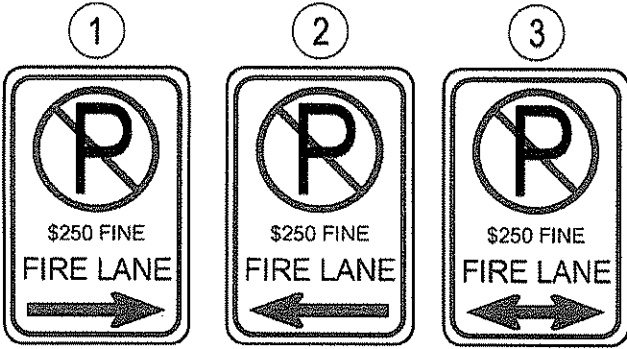
FIRE LANE SIGN PLAN  
**MARTENS PROPERTY**  
 GERMANTOWN (2nd) ELECTION DISTRICT  
 MONTGOMERY COUNTY, MARYLAND

SHEET 5  
 OF 8

JOB NO. 1896-0000      SCALE 1" = 80'      DATE June 10, 2013

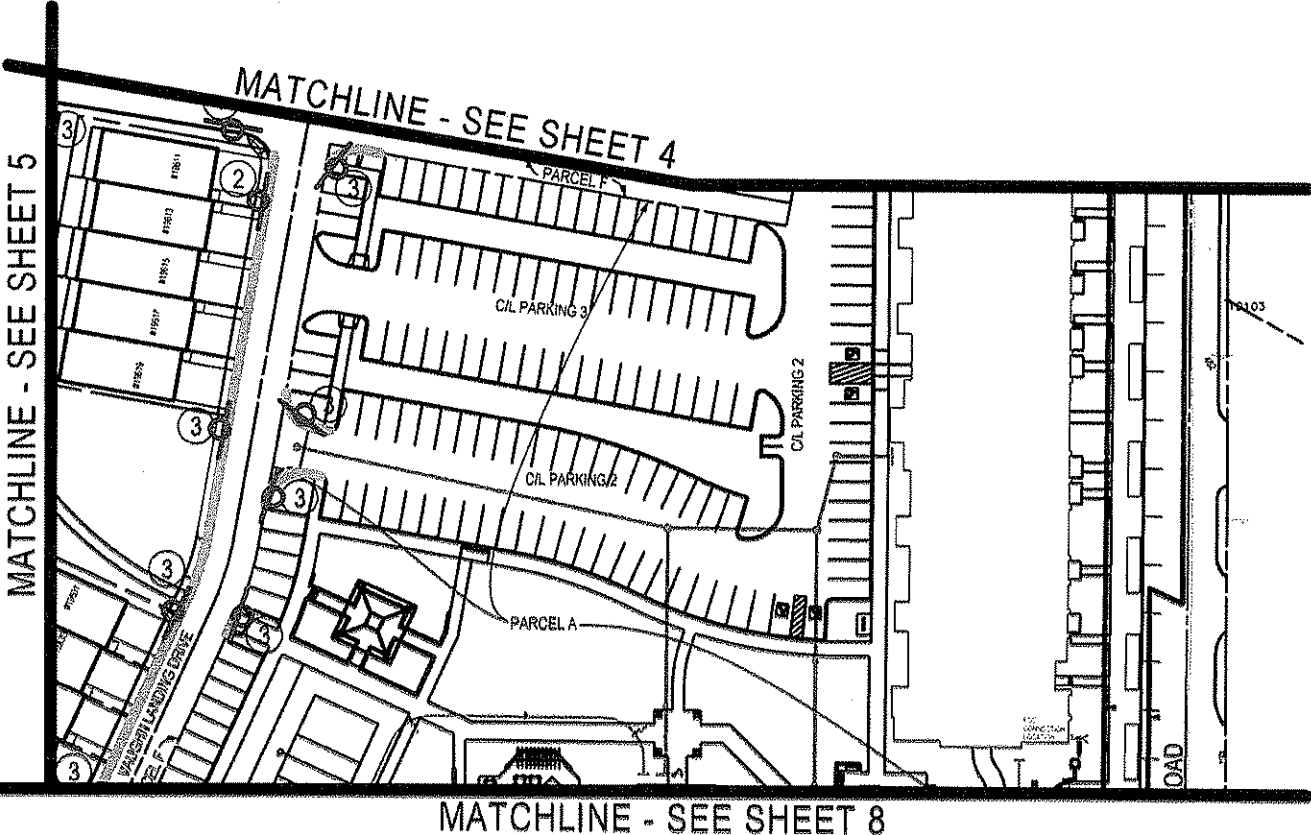
\$LSAPLOT COMMENTS\$

The original of this drawing document was prepared by Loiederman Soltesz Associates, Inc. (LSA). If this document was not obtained directly from LSA and/or it was transmitted electronically, LSA cannot guarantee that unauthorized changes and/or alterations were not made by others. If verification of the information contained hereon is needed, contact should be made directly with LSA. LSA makes no warranties, express or implied, concerning the accuracy of any information that has been transmitted by electronic means.



**LEGEND**

-  FIRE HYDRANT LOCATIONS
-  NO PARKING/FIRE LANE SIGN
-  CURB PAINTING



 **SOLTESZ**  
 2 Research Place, Suite 100  
 Rockville, MD 20850  
 P.301.948.2750 F.301.948.9067  
 www.solteszco.com

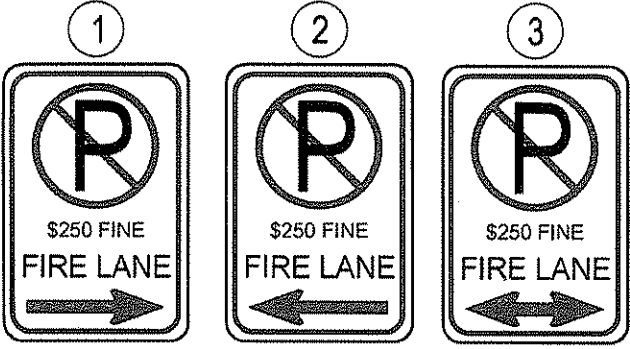
**FIRE LANE SIGN PLAN**  
**MARTENS PROPERTY**  
 GERMANTOWN (2nd) ELECTION DISTRICT  
 MONTGOMERY COUNTY, MARYLAND

SHEET 6  
 OF 6

JOB NO. 1896-0000      SCALE 1" = 80'      DATE June 10, 2013

LSA PLOT COMMENTS

The original of this drawing document was prepared by Loleiderman Soltesz Associates, Inc. (LSA). If this document was not obtained directly from LSA and/or it was transmitted electronically, LSA cannot guarantee that unauthorized changes and/or alterations were not made by others. If verification of the information contained hereon is needed, contact should be made directly with LSA. LSA makes no warranties, express or implied, concerning the accuracy of any information that has been transmitted by electronic means.

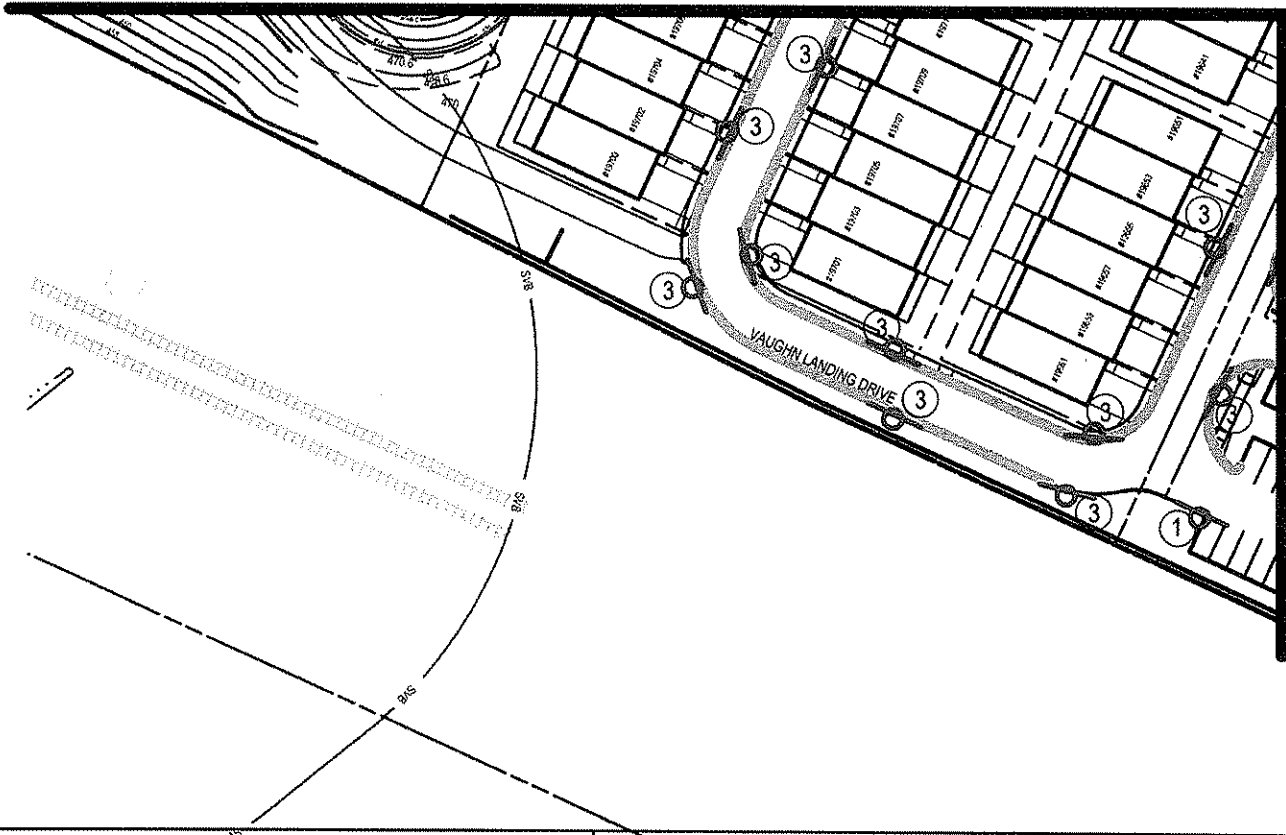


**LEGEND**

-  FIRE HYDRANT LOCATIONS
-  NO PARKING/FIRE LANE SIGN
-  CURB PAINTING



MATCHLINE - SEE SHEET 5



MATCHLINE - SEE SHEET 8



**SOLTESZ**  
 2 Research Place, Suite 100  
 Rockville, MD 20850  
 P.301.948.2750 F.301.948.9067  
 www.solteszco.com

FIRE LANE SIGN PLAN  
**MARTENS PROPERTY**  
 GERMANTOWN (2nd) ELECTION DISTRICT  
 MONTGOMERY COUNTY, MARYLAND

SHEET 7  
 OF 8

JOB NO. 1896-0000 SCALE 1" = 80' DATE June 10, 2013

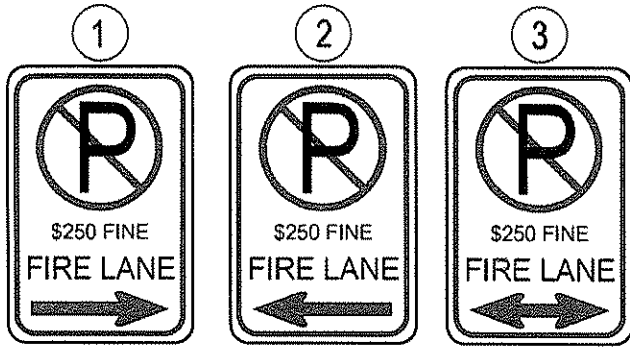
LSA PLOT COMMENT \$



The original of this drawing document was prepared by Loiederman Soltesz Associates, Inc. (LSA). If this document was not obtained directly from LSA and/or it was transmitted electronically, LSA cannot guarantee that unauthorized changes and/or alterations were not made by others. If verification of the information contained hereon is needed, contact should be made directly with LSA. LSA makes no warranties, express or implied, concerning the accuracy of any information that has been transmitted by electronic means.

MATCHLINE - SEE SHEET 7

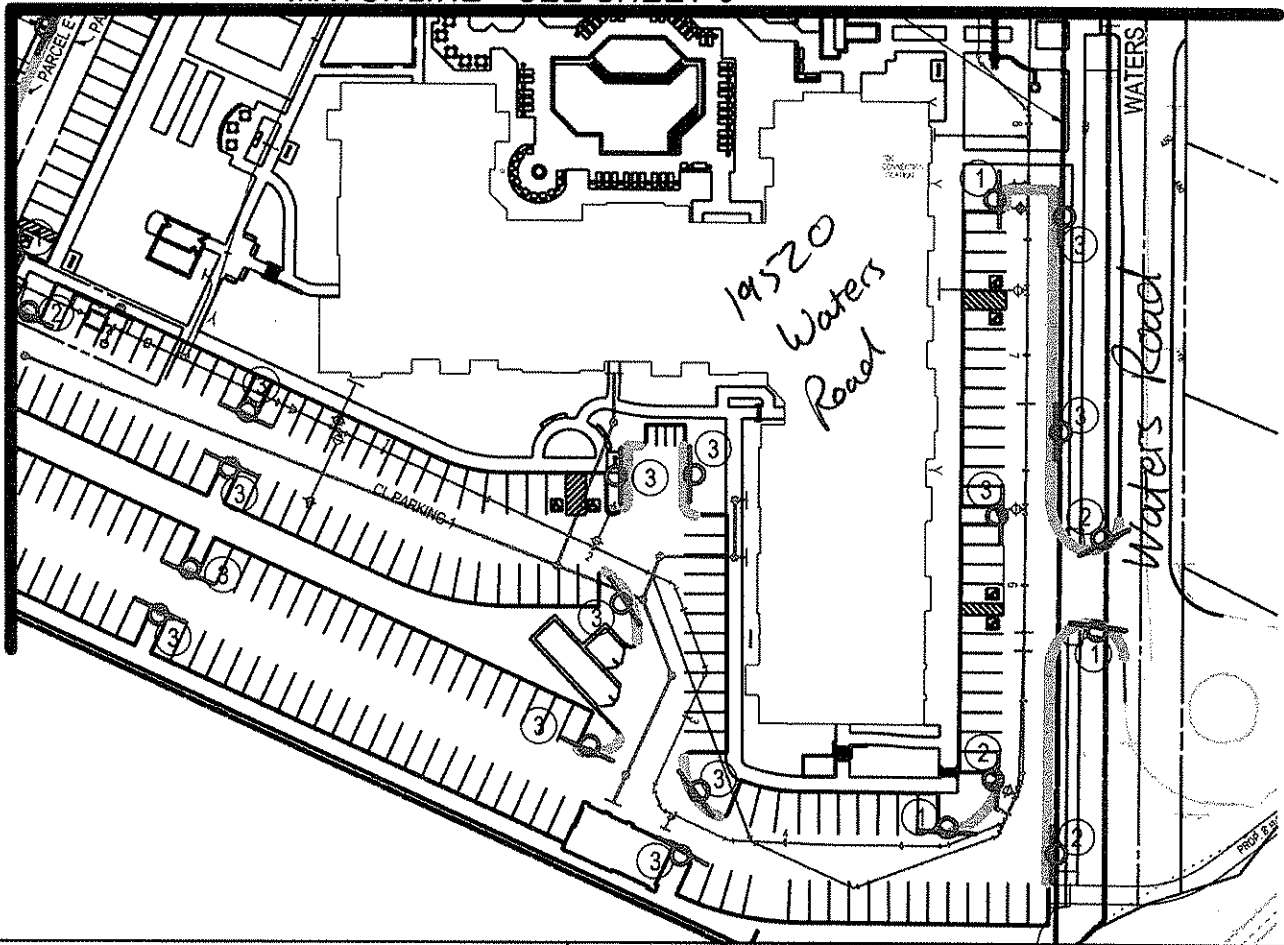
MATCHLINE - SEE SHEET 6



**LEGEND**

- FIRE HYDRANT LOCATIONS
- NO PARKING/FIRE LANE SIGN
- CURB PAINTING

SCALE: 1" = 80'



**SOLTESZ**  
 2 Research Place, Suite 100  
 Rockville, MD 20850  
 P.301.948.2750 F.301.948.9067  
 www.solteszco.com

FIRE LANE SIGN PLAN  
**MARTENS PROPERTY**  
 GERMANTOWN (2nd) ELECTION DISTRICT  
 MONTGOMERY COUNTY, MARYLAND

SHEET 8  
 OF 8

JOB NO. 1896-0000

SCALE 1" = 80'

DATE June 10, 2013

SLSAPLOTCOMMENT\$