



# MONTGOMERY COUNTY EXECUTIVE ORDER

Offices of the County Executive • 101 Monroe Street • Rockville, Maryland 20850

Subject Fire Lane Establishment Order for The Home Depot	Executive Order No. 167-13	Subject Suffix
Originating Department Montgomery County Fire and Rescue Service	Department Number MCFRS 30-13	Effective Date 11/13/2013

### Fire Lane Establishment Order

Pursuant to Section 22 - 33, Montgomery County Code, 1971, as amended, you are hereby notified that a Fire Lane has been established as described in this order. You are hereby ordered to post fire lane signs and paint curbs/pavement (painting optional) as identified below. When signs and paint work (painting optional) have been completed, this order will authorize the enforcement of this Fire Lane by appropriate police and fire officials. Compliance with this order must be achieved within 30 days of receipt.

LOCATION: The Home Depot  
NW quadrant, intersection of Georgia Ave., and Connecticut Ave.  
14000 Georgia Ave.

All areas where indicated by signs and paint.

SIGNS - - (See attached diagram for location of sign placement)



\$250 FINE

FIRE LANE

Signs must be posted so that it is not possible to park a vehicle without being in sight of a sign. Signs may be no further apart than 100 feet

(Red letters on white background)

PAINT - - (See attached diagram if painting).

Paint must be traffic yellow with lines of sufficient width to be readily identifiable/readable by motor vehicle operators.

Fire Chief, Montgomery County Fire and Rescue Service

The original of this drawing document was prepared by Loiderman Soltesz Associates, Inc. (L.S.A.). If this document was not obtained directly from L.S.A. and/or it was transmitted electronically, L.S.A. cannot guarantee that unauthorized changes and/or alterations were not made by others. If verification of the information contained hereon is needed, contact should be made directly with L.S.A. L.S.A. makes no warranties, express or implied, concerning the accuracy of any information that has been transmitted by electronic means.

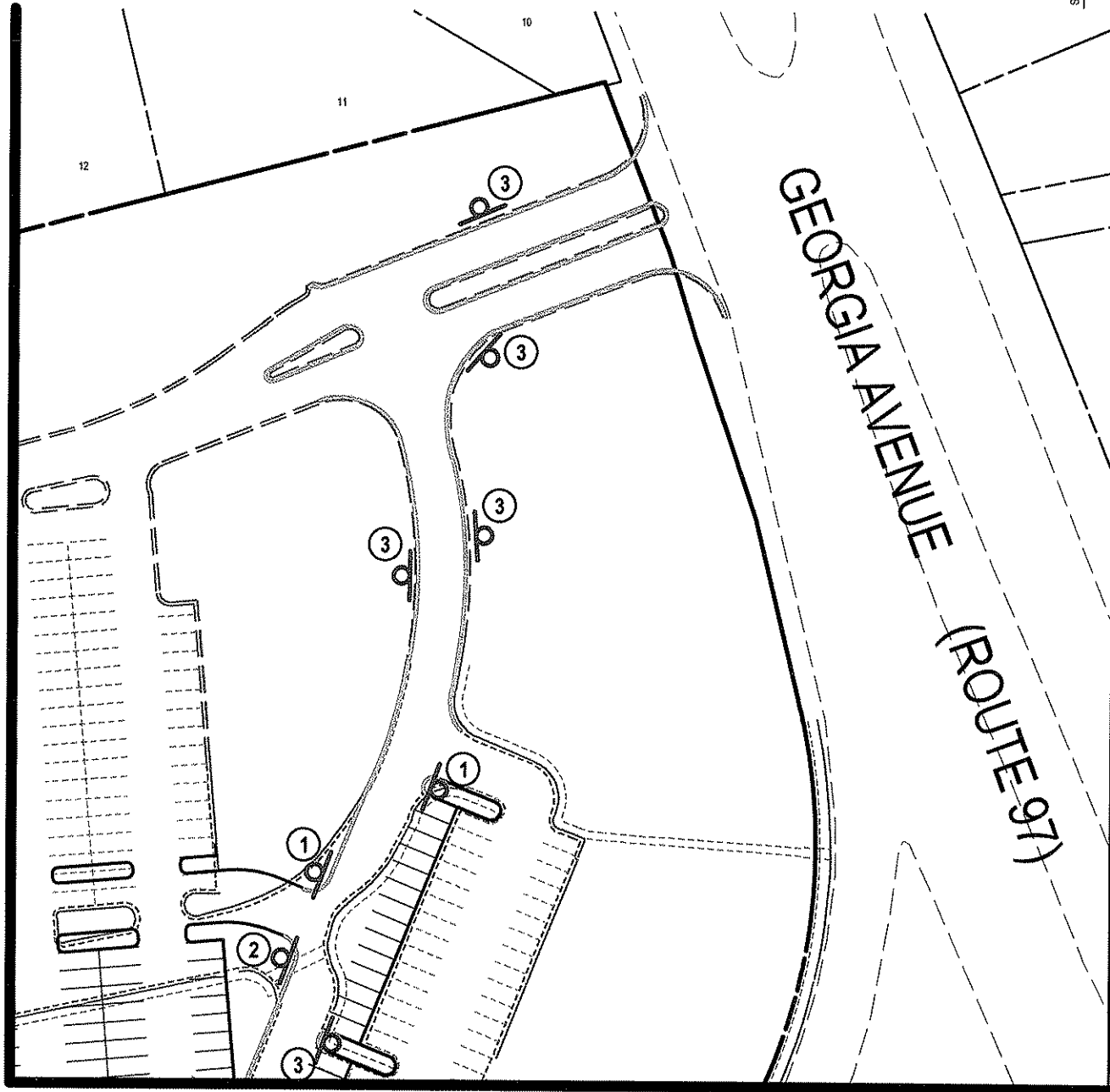
MATCHLINE - SEE SHEET 2



**LEGEND**

- FIRE HYDRANT LOCATIONS
- NO PARKING/FIRE LANE SIGN
- CURB PAINTING

SCALE: 1" = 80'



MATCHLINE - SEE SHEET 6



**SOLTESZ**  
 2 Research Place, Suite 100  
 Rockville, MD 20850  
 P.301.948.2750 F.301.948.9067  
 www.solteszco.com

**FIRE LANE SIGN PLAN**  
**THE HOME DEPOT - ASPEN HILL**  
 RESIDUE OF PARCEL A  
 VITRO CORPORATION PROPERTY  
 14000 GEORGIA AVENUE, ASPEN HILL, MD 20906  
P.B. 58 P. 4689  
 WHEATON (13th) ELECTION DISTRICT, MONTGOMERY COUNTY, MARYLAND

JOB NO. 3376-0000      SCALE 1" = 80'      DATE September 16, 2013

SHEET 1  
 OF 6

\$LSAPLOT COMMENTS

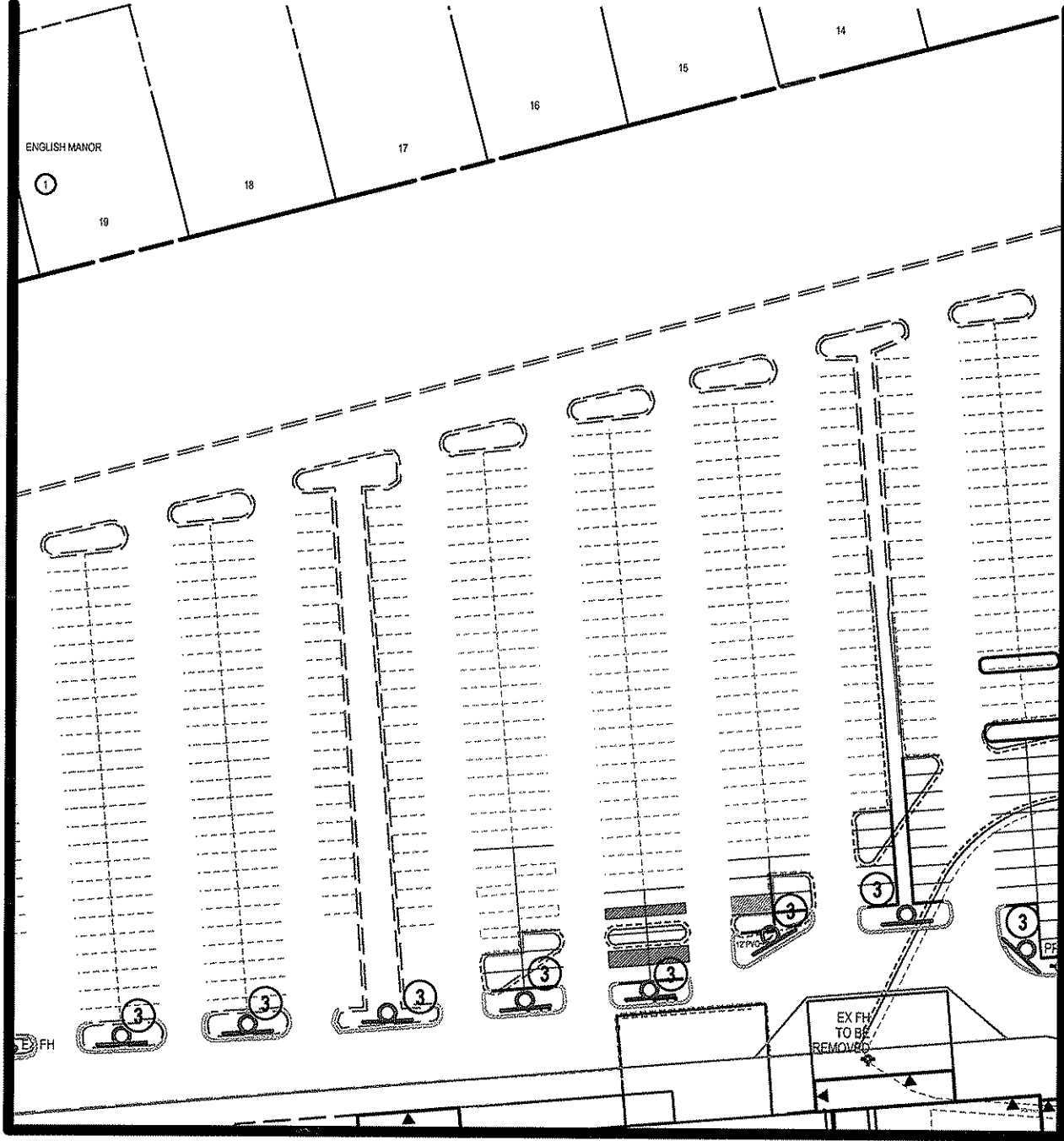
The original of this drawing document was prepared by Loiderman Soltesz Associates, Inc. (LSA). If this document was not obtained directly from LSA and/or it was transmitted electronically, LSA cannot guarantee that unauthorized changes and/or alterations were not made by others. If verification of the information contained hereon is needed, contact should be made directly with LSA. LSA makes no warranties, express or implied, concerning the accuracy of any information that has been transmitted by electronic means.

MATCHLINE - SEE SHEET 3

MATCHLINE - SEE SHEET 1

MATCHLINE - SEE SHEET 6

MATCHLINE - SEE SHEET 5



**SOLTESZ**  
 2 Research Place, Suite 100  
 Rockville, MD 20850  
 P.301.948.2750 F.301.948.9067  
 www.solteszco.com

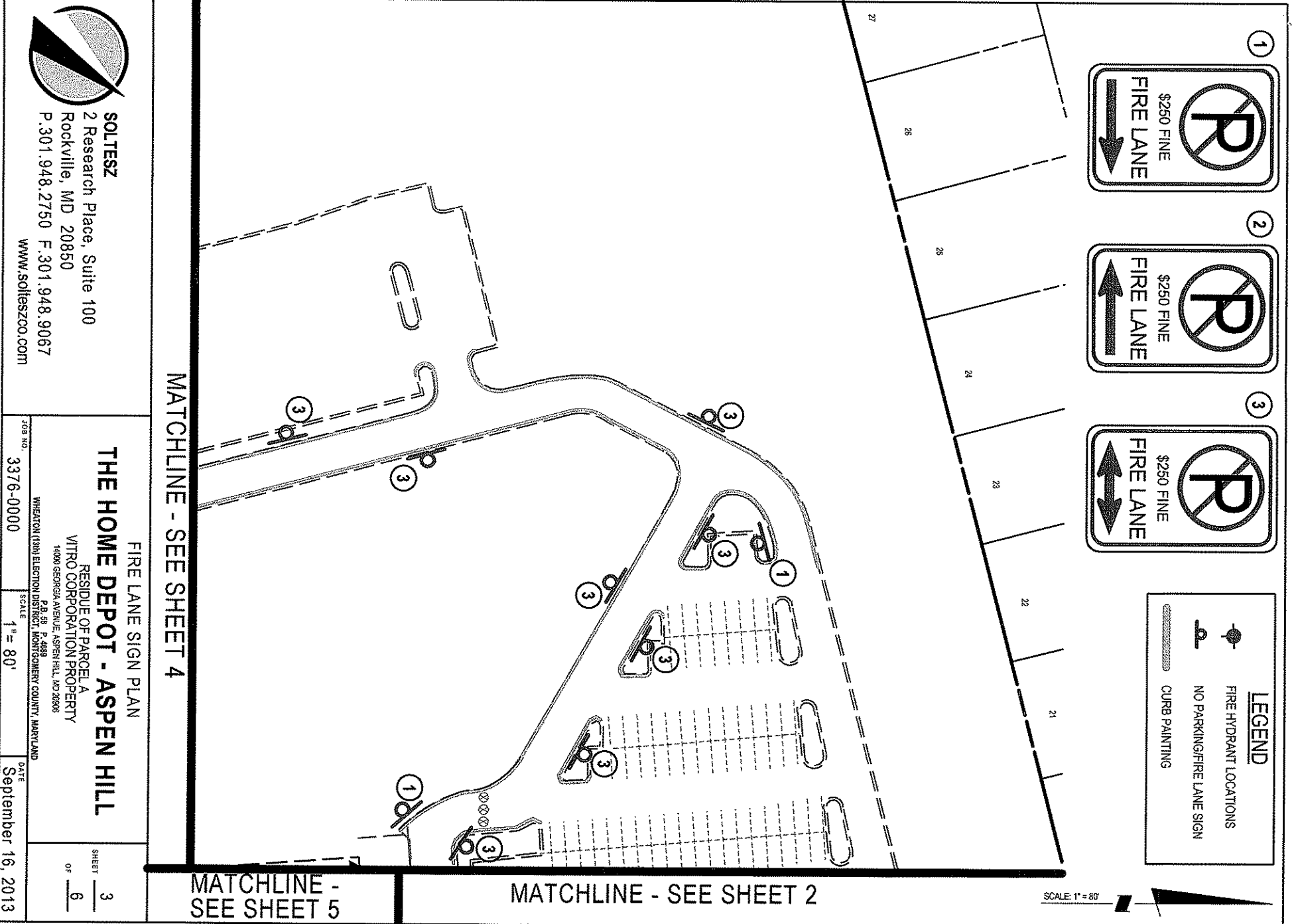
FIRE LANE SIGN PLAN  
**THE HOME DEPOT - ASPEN HILL**  
 RESIDUE OF PARCEL A  
 VITRO CORPORATION PROPERTY  
 14000 GEORGIA AVENUE, ASPEN HILL, MD 20906  
P.B. 98 P. 4889  
 WHEATON (13th) ELECTION DISTRICT, MONTGOMERY COUNTY, MARYLAND

SHEET 2  
 OF 6

JOB NO. 3376-0000 SCALE 1" = 80' DATE September 16, 2013

LSA PLOT COMMENT \$

The original of this drawing document was prepared by Loiederman Soltesz Associates, Inc. (LSA). If this document was not obtained directly from LSA and/or it was transmitted electronically, LSA cannot guarantee that unauthorized changes and / or alterations were not made by others. If verification of the information contained hereon is needed, contact should be made directly with LSA. LSA makes no warranties, express or implied, concerning the accuracy of any information that has been transmitted by electronic means.



**SOLTESZ**  
 2 Research Place, Suite 100  
 Rockville, MD 20850  
 P. 301.948.2750 F. 301.948.9067  
 www.solteszco.com

MATCHLINE - SEE SHEET 4

**THE HOME DEPOT - ASPEN HILL**  
 FIRE LANE SIGN PLAN  
 RESIDUE OF PARCEL A  
 VITRO CORPORATION PROPERTY  
 14000 GEORGIA AVENUE, ASPEN HILL, MD 20806  
 P. 8, 98 P. 4689  
 WHEATON (12th) ELECTION DISTRICT, MONTGOMERY COUNTY, MARYLAND

JOB NO. 3376-0000

SCALE 1" = 80'

DATE September 16, 2013

SHEET 3 OF 6

MATCHLINE - SEE SHEET 5

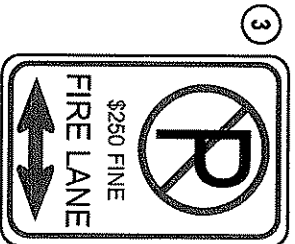
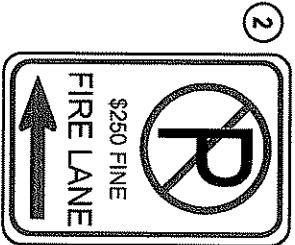
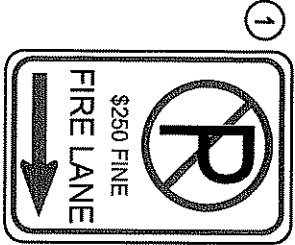
MATCHLINE - SEE SHEET 2

SCALE: 1" = 80'



\$LSAPLOTCOMMENTS\$

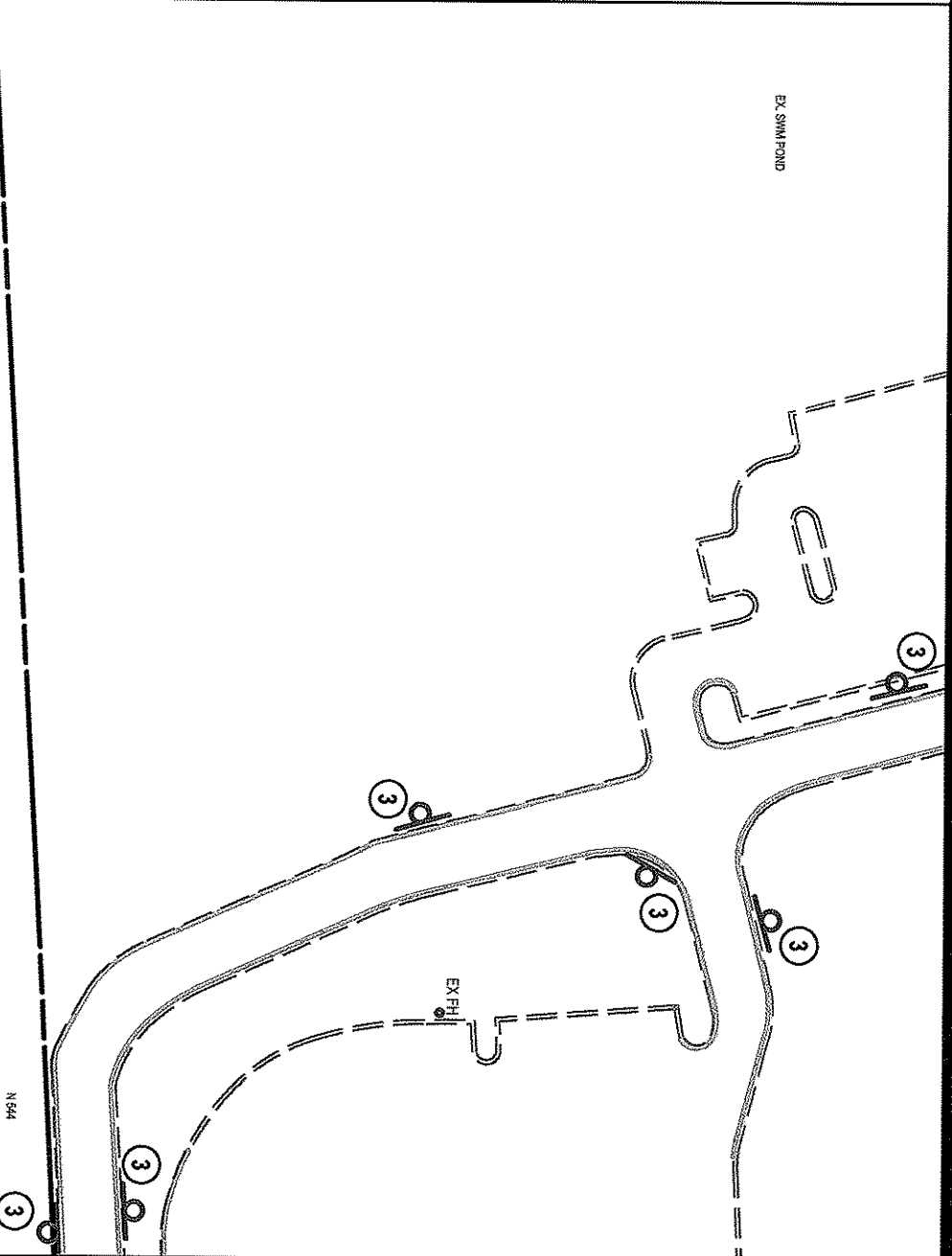
The original of this drawing document was prepared by Loiederman Soltesz Associates, Inc. (LSA). If this document was not obtained directly from LSA and/or it was transmitted electronically, LSA cannot guarantee that unauthorized changes and / or alterations were not made by others. If verification of the information contained hereon is needed, contact should be made directly with LSA. LSA makes no warranties, express or implied, concerning the accuracy of any information that has been transmitted by electronic means.



**LEGEND**

-  FIRE HYDRANT LOCATIONS
-  NO PARKING/FIRE LANE SIGN
-  CURB PAINTING

MATCHLINE - SEE SHEET 3



MATCHLINE - SEE SHEET 5

SCALE: 1" = 80'



**SOLTESZ**  
 2 Research Place, Suite 100  
 Rockville, MD 20850  
 P: 301.948.2750 F: 301.948.9067  
 www.solteszco.com

**FIRE LANE SIGN PLAN**  
**THE HOME DEPOT - ASPEN HILL**

RESIDUE OF PARCEL A  
 VITRO CORPORATION PROPERTY  
 1400 GEORGIA AVENUE, ASPEN HILL, MD 20905

WHEATON (12M) ELECTION DISTRICT, MONTGOMERY COUNTY, MARYLAND

JOB NO. 3376-0000

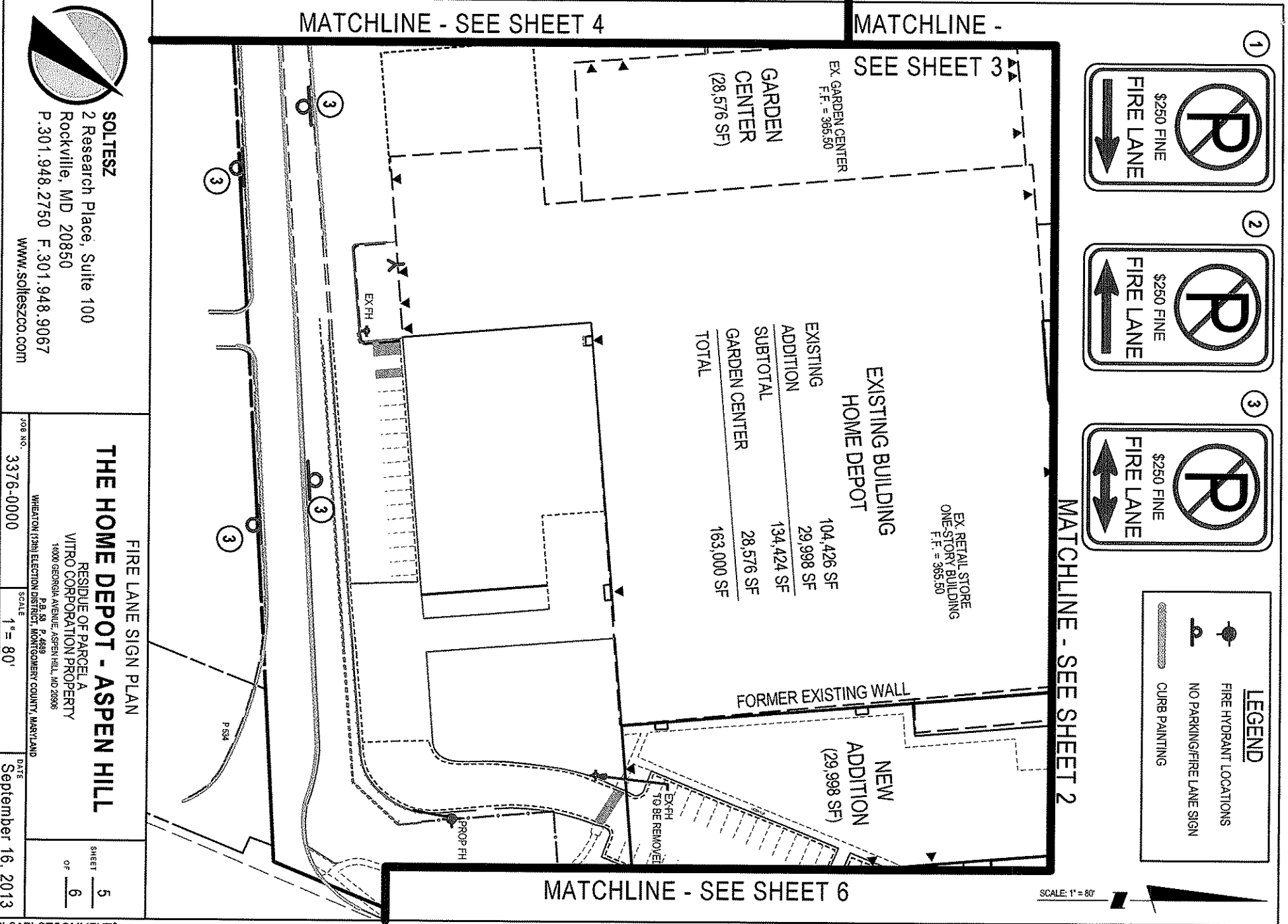
SCALE 1" = 80'

DATE September 16, 2013

SHEET 4  
 OF 6

\$LSAPLOTCOMMENT\$

The original of this drawing document was prepared by Loiederman Soltesz Associates, Inc. (LSA). If this document was not obtained directly from LSA and/or it was transmitted electronically, LSA cannot guarantee that unauthorized changes and / or alterations were not made by others. If verification of the information contained hereon is needed, contact should be made directly with LSA. LSA makes no warranties, express or implied, concerning the accuracy of any information that has been transmitted by electronic means.



**SOLTESZ**  
2 Research Place, Suite 100  
Rockville, MD 20850  
P. 301.948.2750 F. 301.948.9067  
www.solteszco.com

**FIRE LANE SIGN PLAN**

**THE HOME DEPOT - ASPEN HILL**

RESIDUE OF PARCEL A  
VITRO CORPORATION PROPERTY  
1400 GEORGIA AVENUE, ASPEN HILL, MD 20806  
P.A. 50 P. 4620  
WHEATON (13th) ELECTION DISTRICT, MONTGOMERY COUNTY, MARYLAND

JOB NO. 3376-0000

SCALE 1" = 80'

DATE September 16, 2013

SHEET 5 OF 6

\$LSAPLOTCOMMENTS\$

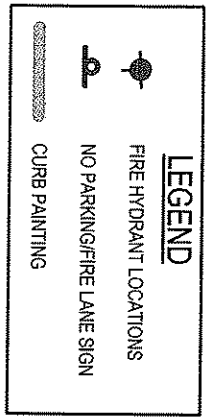
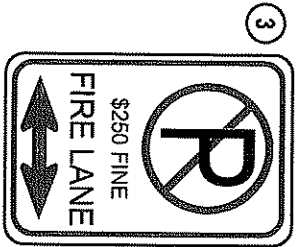
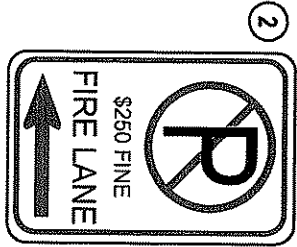
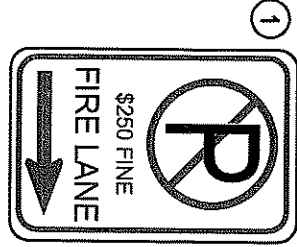
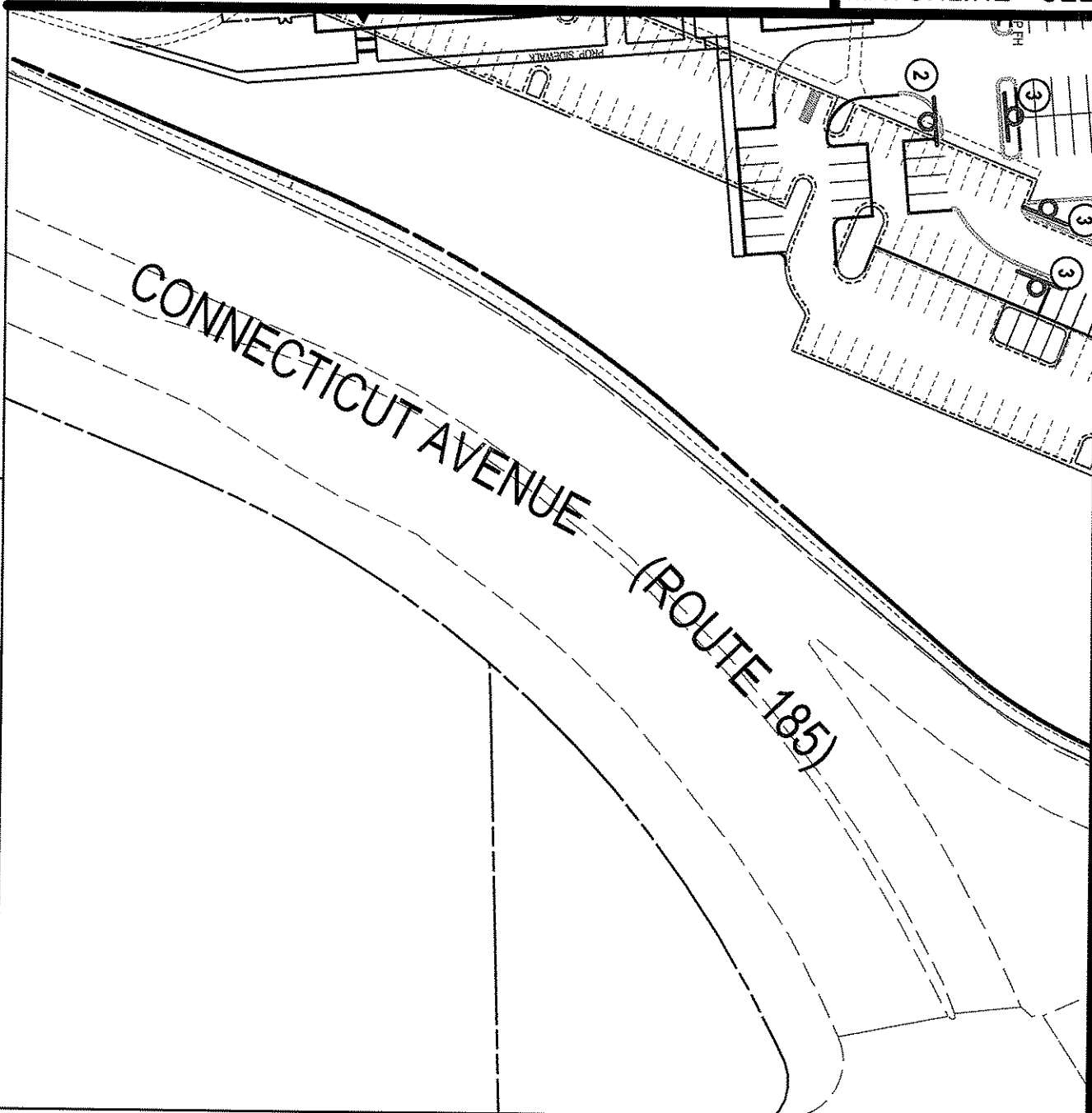
The original of this drawing document was prepared by Loiederman Soltesz Associates, Inc. (LSA). If this document was not obtained directly from LSA and/or it was transmitted electronically, LSA cannot guarantee that unauthorized changes and / or alterations were not made by others. If verification of the information contained hereon is needed, contact should be made directly with LSA. LSA makes no warranties, express or implied, concerning the accuracy of any information that has been transmitted by electronic means.

MATCHLINE - SEE SHEET 5

MATCHLINE - SEE SHEET 2



**SOLTESZ**  
 2 Research Place, Suite 100  
 Rockville, MD 20850  
 P. 301.948.2750 F. 301.948.9067  
 www.solteszco.com



MATCHLINE - SEE SHEET 1

SCALE: 1" = 80'



**FIRE LANE SIGN PLAN**  
**THE HOME DEPOT - ASPEN HILL**

RESIDUE OF PARCEL A  
 VITRO CORPORATION PROPERTY  
 14000 GEORGIA AVENUE, ASPEN HILL, MD 20895

WHEATON (FIRM) ELECTION DISTRICT, MONTGOMERY COUNTY, MARYLAND

TOR NO. 3376-0000

SCALE 1" = 80'

DATE September 16, 2013

SHEET 6  
 OF 6