



Restructure



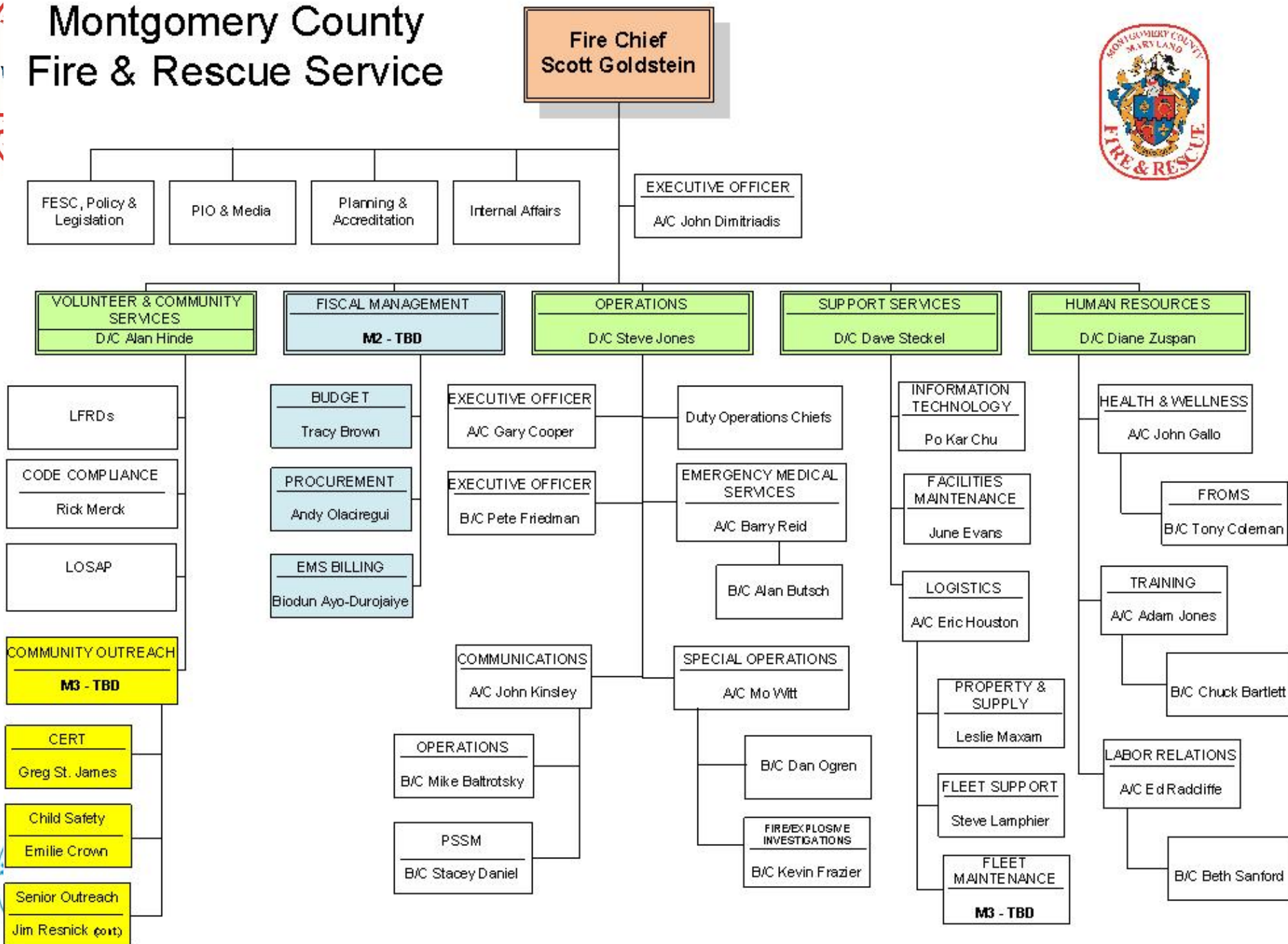


Scope

- Aligning elements together
 - Personnel (hiring, health, safety, training, and labor relations) under the Human Resources Division.
 - Support service responsibilities (logistics, fleet/apparatus, IT, and facilities) under a Support Services Division.
 - All facets pertaining to financial aspects into a Fiscal Management Division
 - Community outreach responsibilities (outreach, code compliance, and volunteer services) into the Volunteer and Community Services Division.



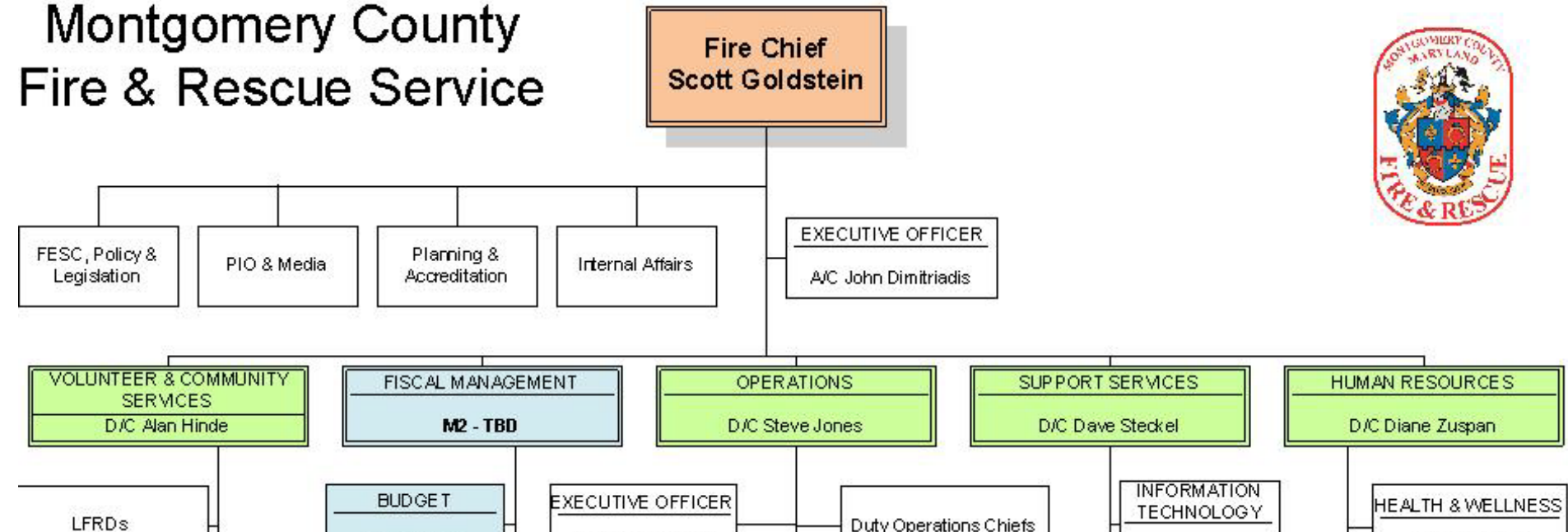
Montgomery County Fire & Rescue Service





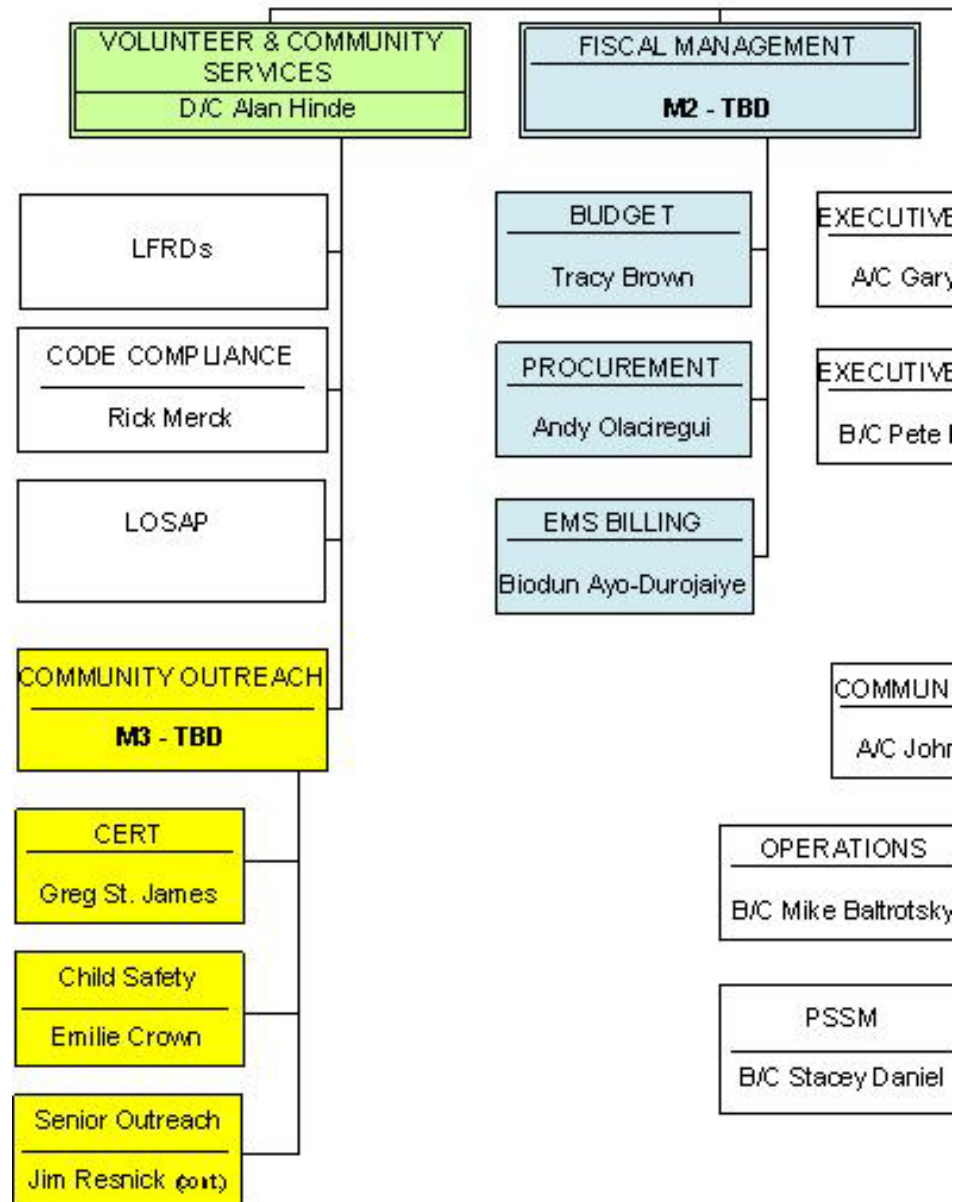
Division's

Montgomery County Fire & Rescue Service



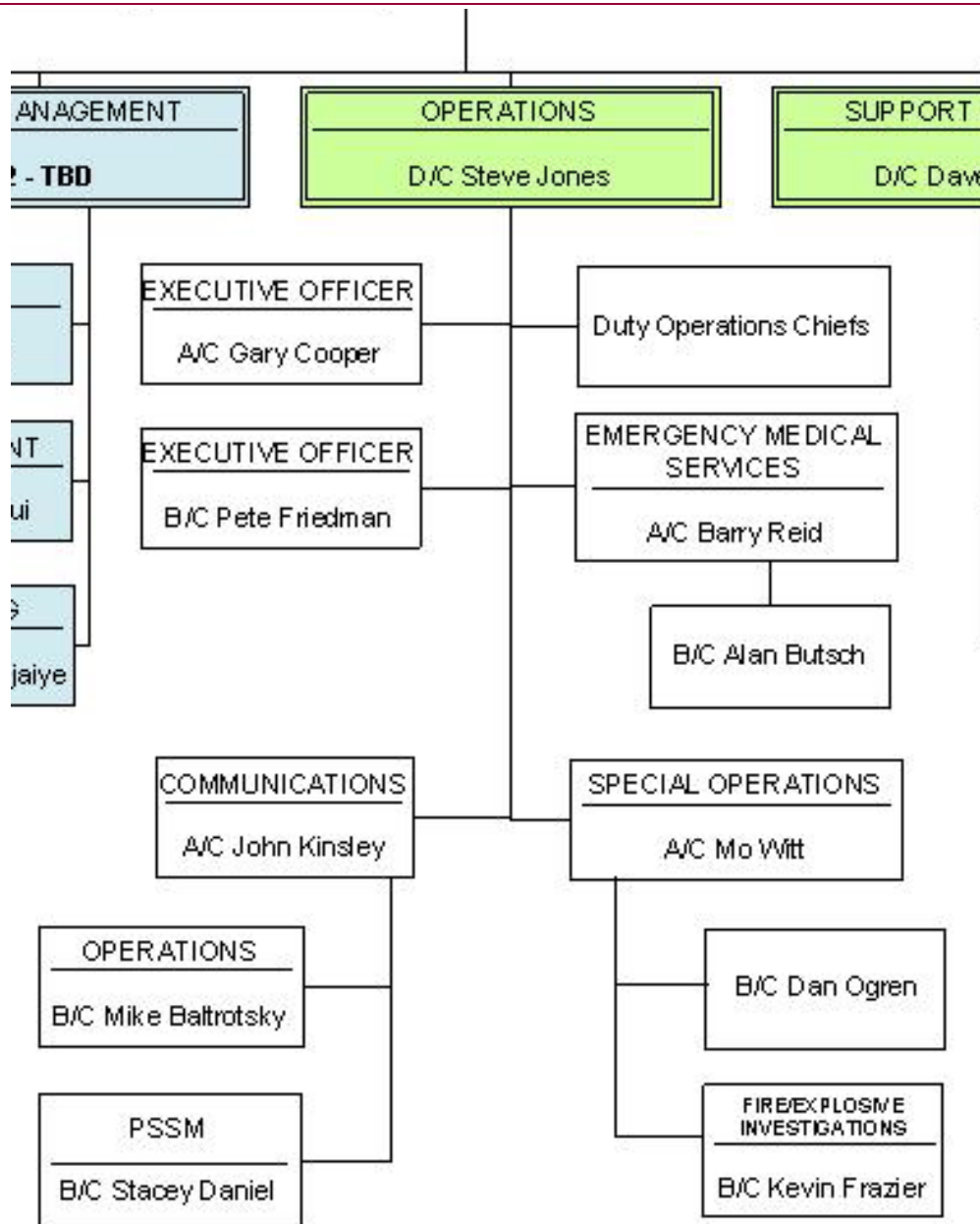


Vol & Community Services Fiscal Management



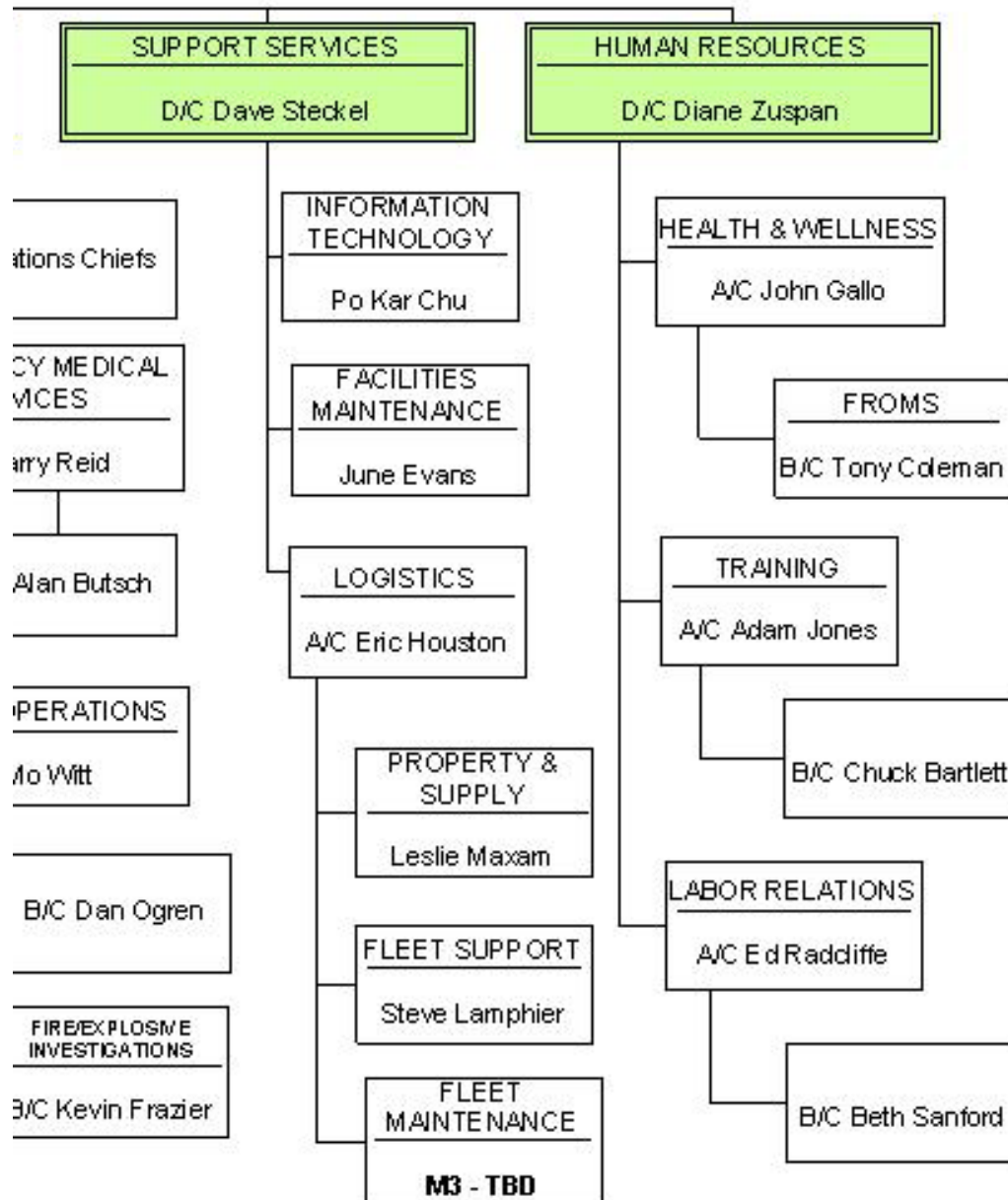


Operations





Support Services & Human Resources





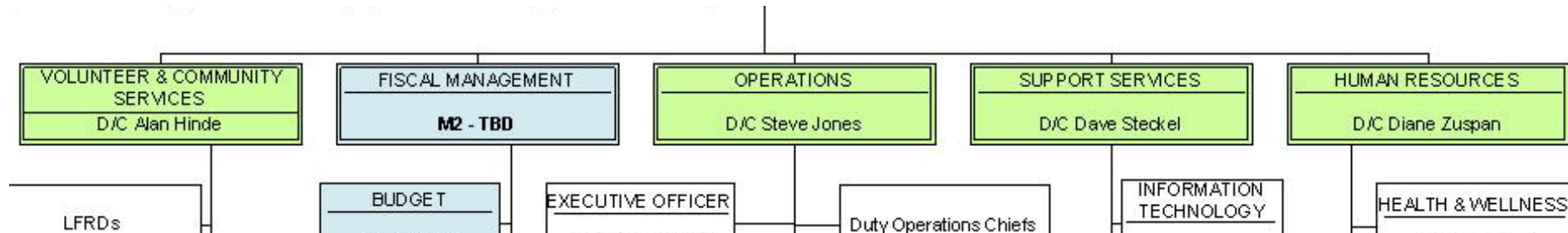
Code Compliance

- 1995 – move of plan reviewers to DPS
- 2012 – move of new construction to DPS
- Dialog/planning on move of FCC to DPS
 - Consolidate all services in DPS
 - Timeline - TBD
 - Expand Customer Service
 - Continue Customer Service





Timing



- Final approval receive this week
- Next steps to advertise / rate / interview / select
- Late December to early January for positions
- Organization changes – likely January 3rd 2016





Restructure

Montgomery County Fire & Rescue Service

