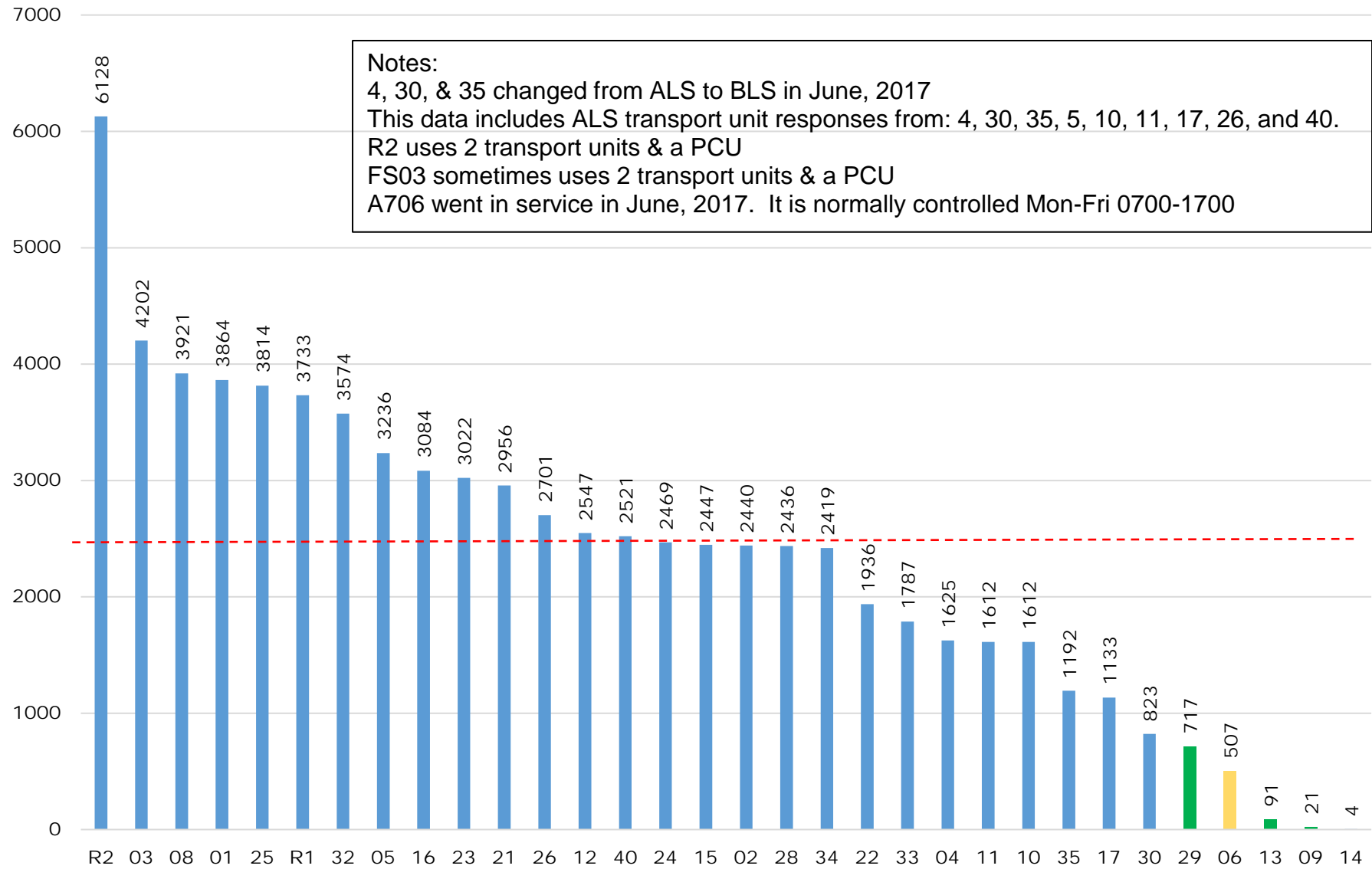
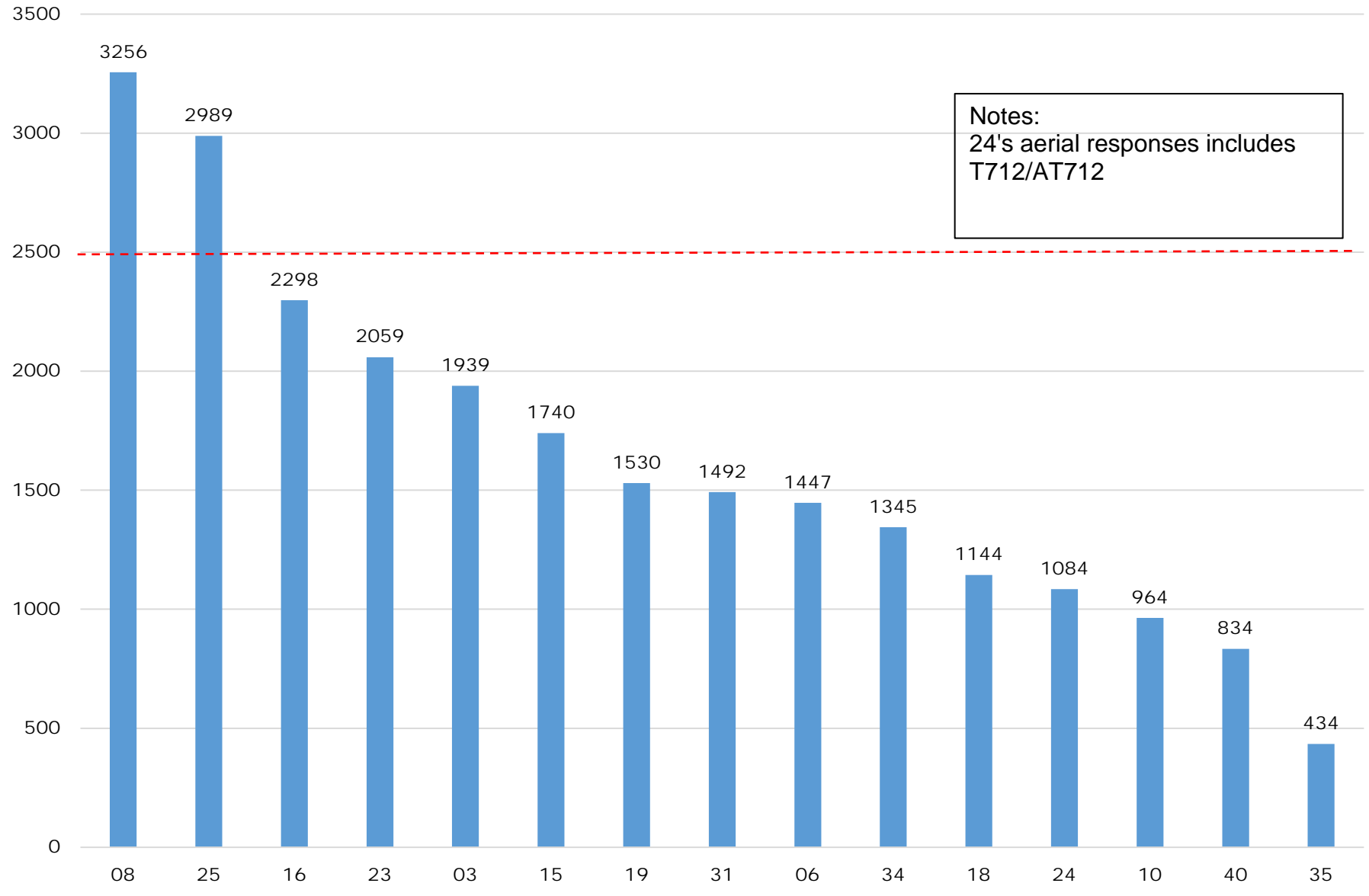


# CY2017 Ambulance Responses (Includes all BLS transport unit responses)



# CY2017 Aerial Responses

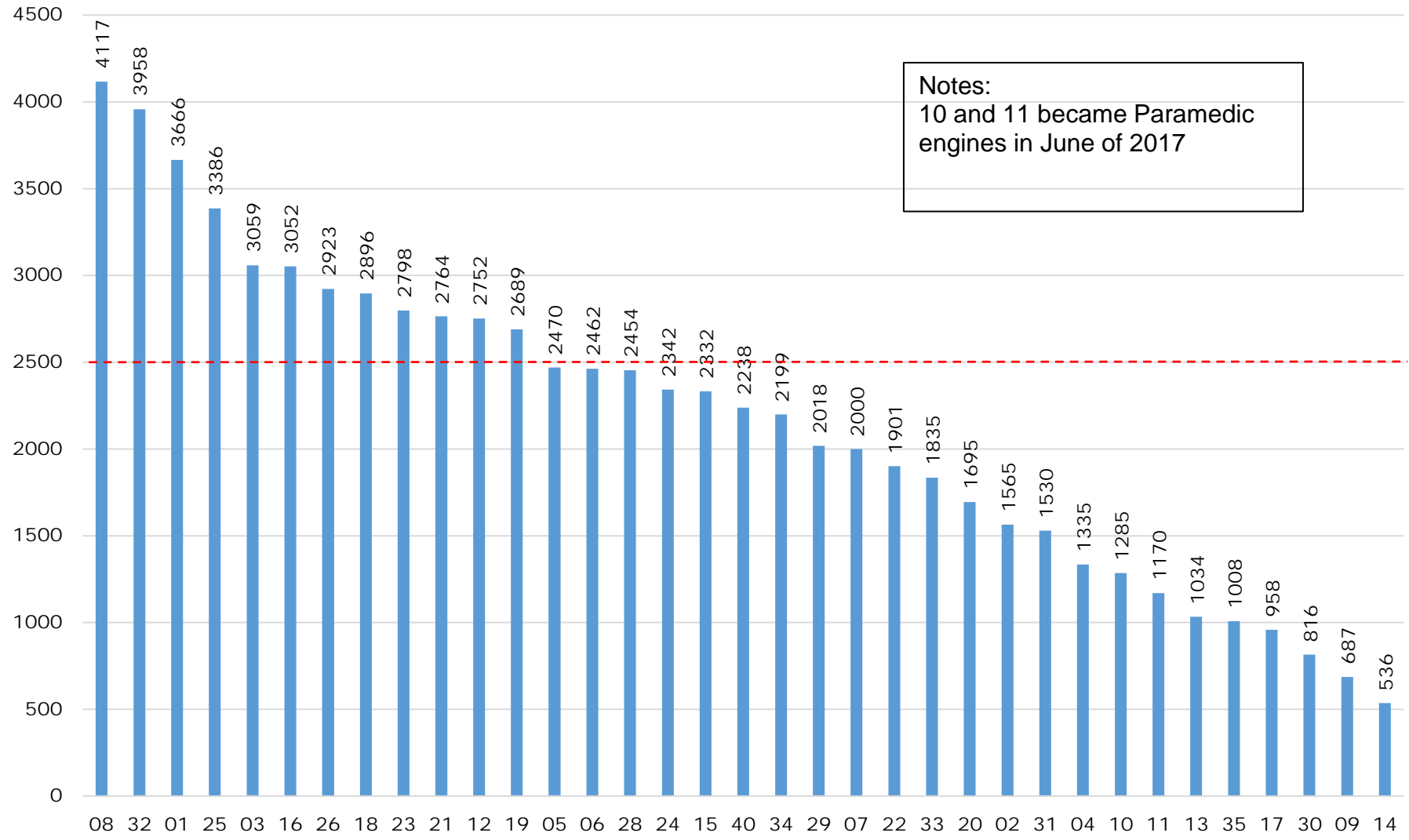
(Includes all aerial types: Truck, Tower, Paramedic Truck, etc)



# CY2017 Engine Responses

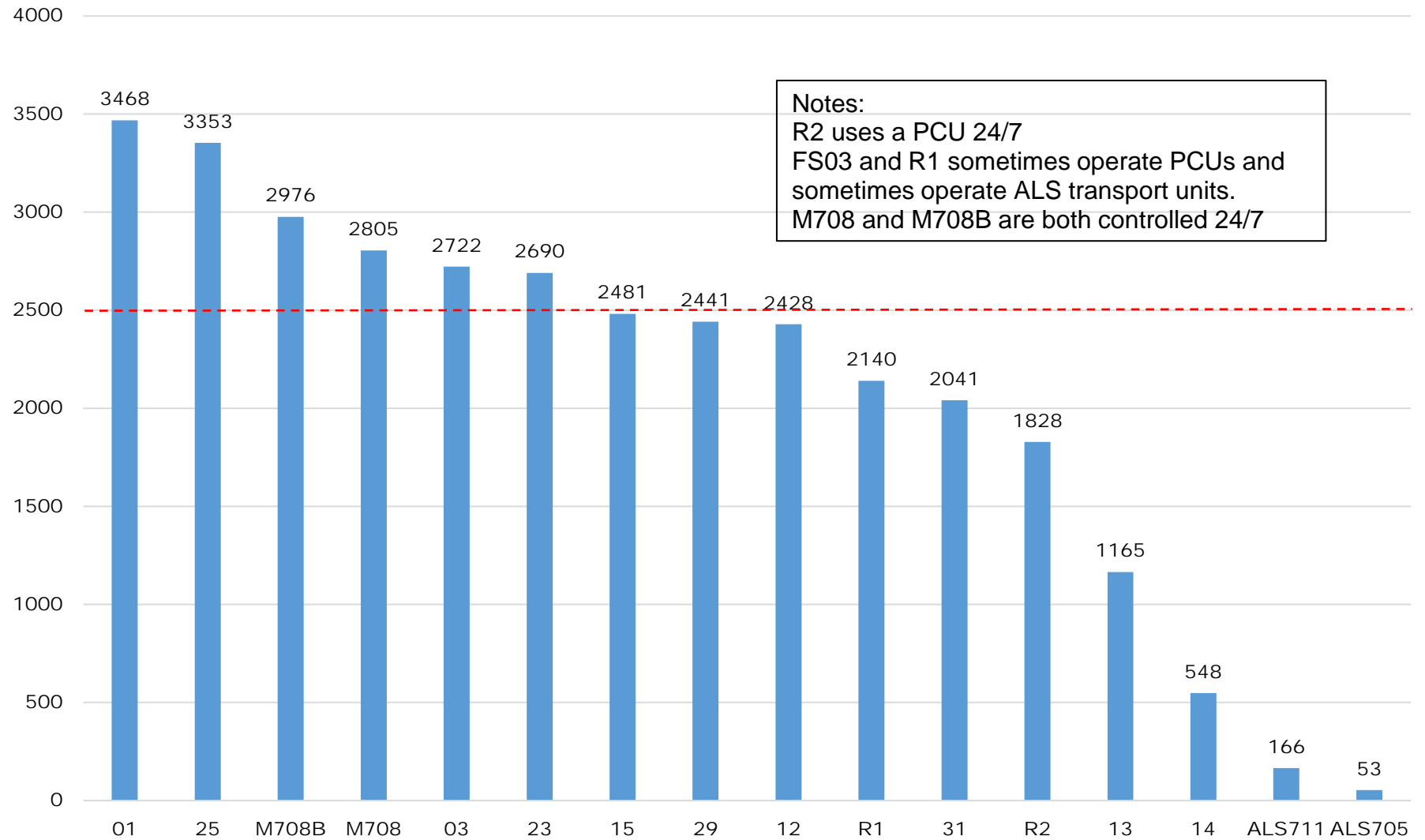
(Includes all engine types: Rescue, Paramedic, Brush Engine, etc)

**Notes:**  
10 and 11 became Paramedic engines in June of 2017

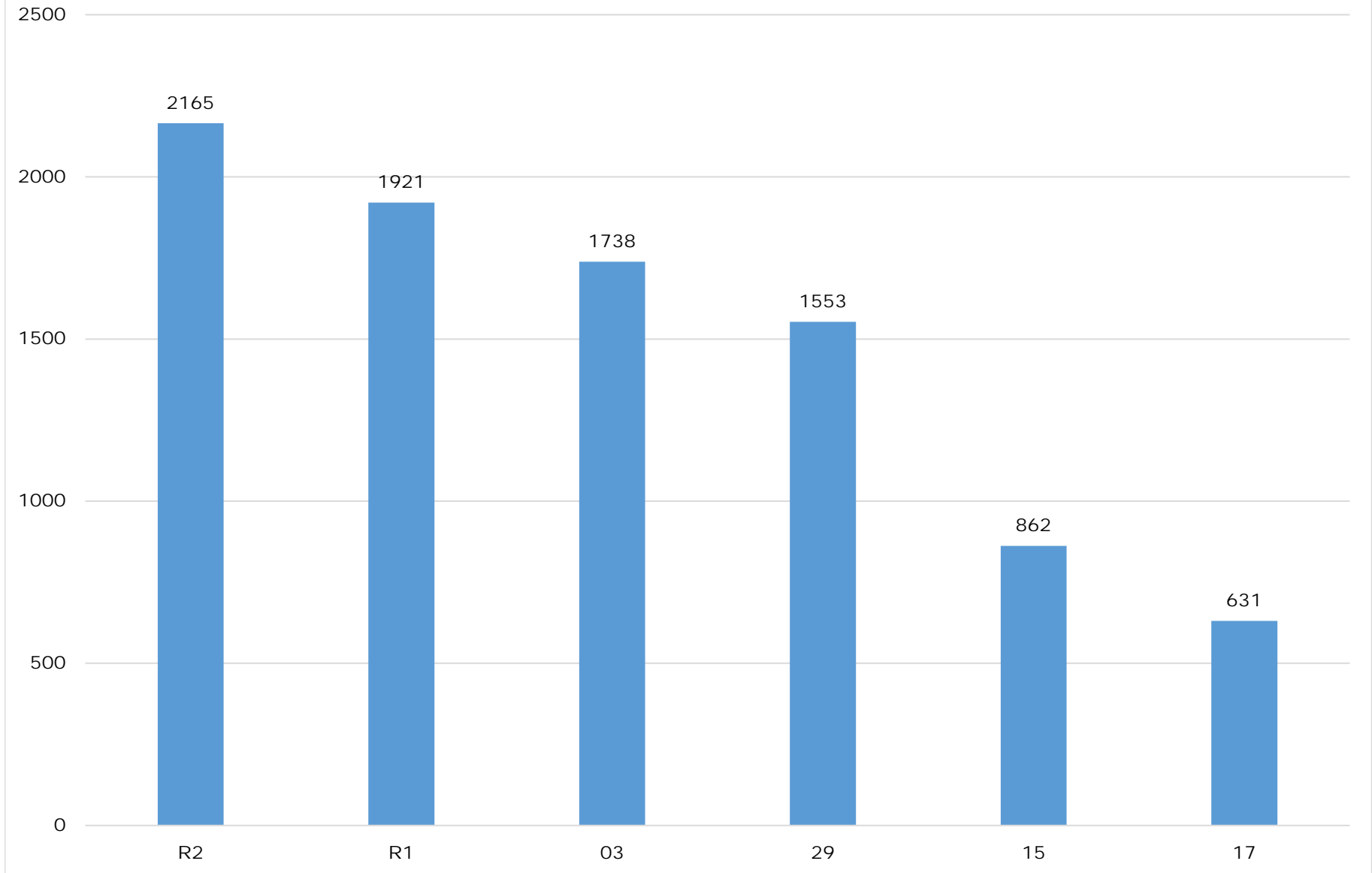


# CY2017 Medic Unit Responses

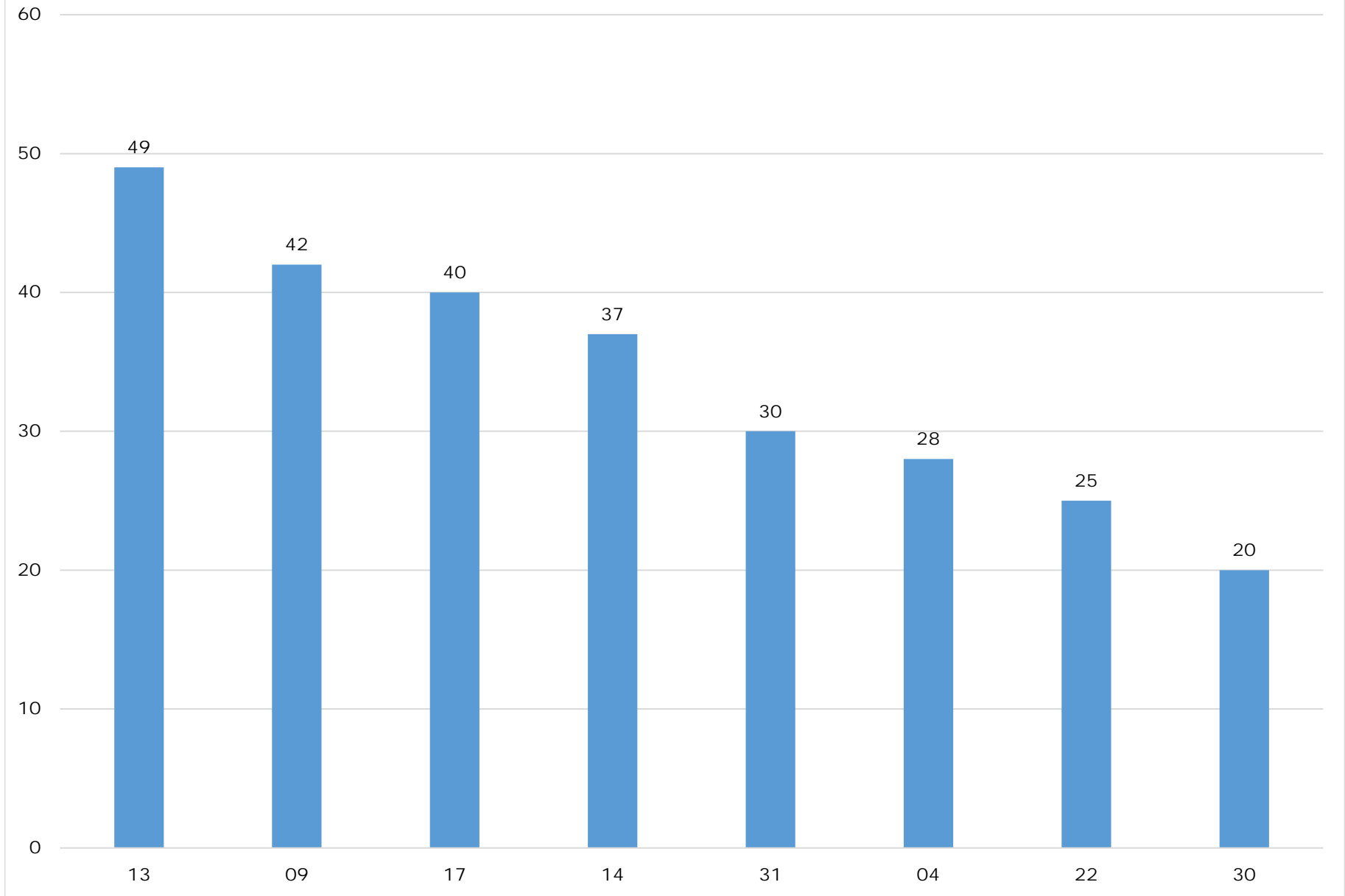
(Includes all ALS transport unit and Paramedic Chase Car responses)



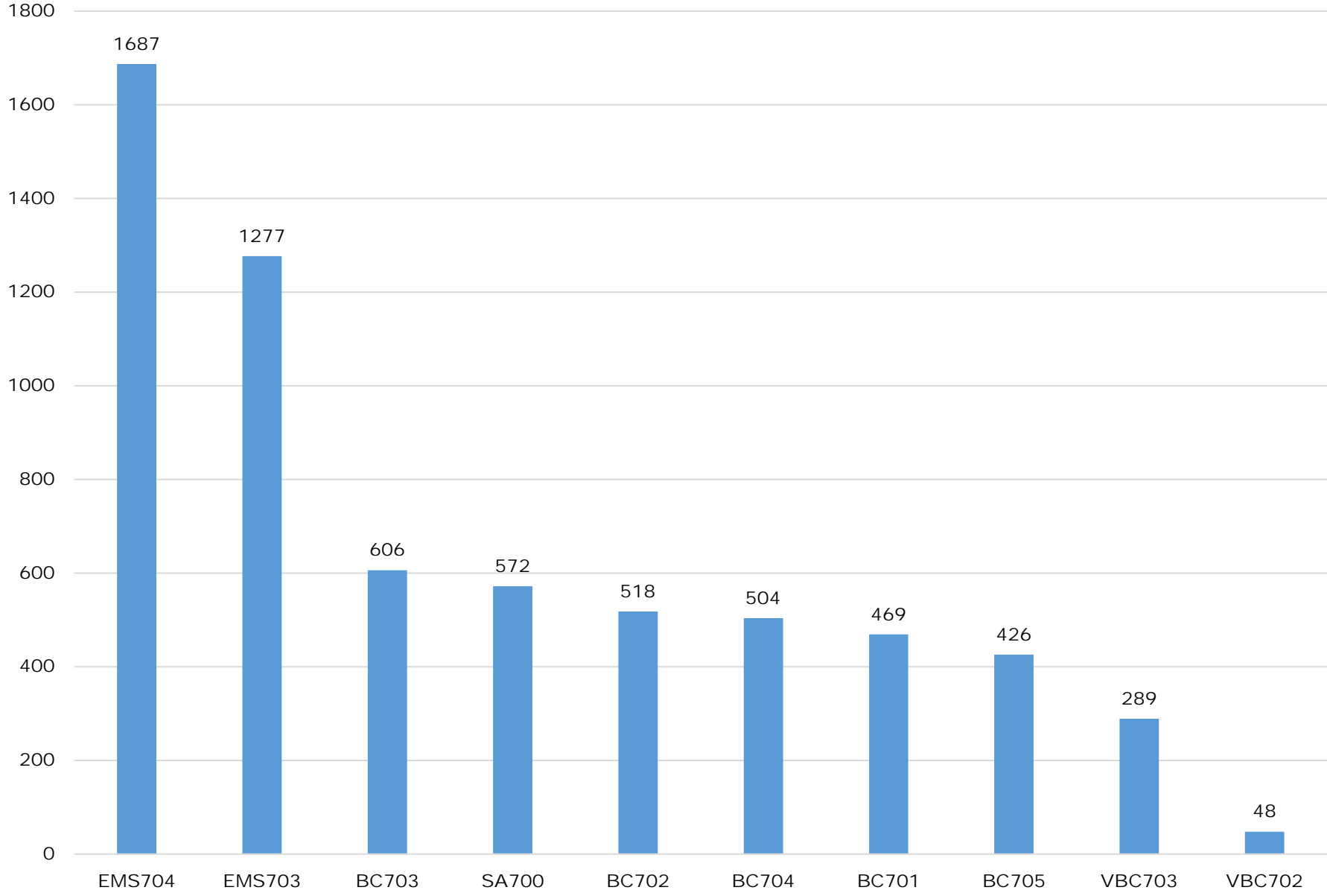
## CY2017 Rescue Squad Responses



# CY2017 Tanker Responses



# CY2017 Command Staff Responses



# CY2017 Federal Unit Responses

