

Heat damage

2-3



WARNING Excessive heat from fire, brake malfunction, wheel bearing failure, tire failure or other sources may weaken the metal and cause the wheel/tire assembly to separate explosively.

Exploding wheel/tire assembly can cause serious injury or death.

Immediately and permanently remove from service any wheel that has been exposed to excessive heat.

Inspect for exposure to excessive heat. A wheel that has been subjected to excessive heat may appear charred or burned. A wheel that has been exposed to excessive heat may appear to be in good condition if it has been cleaned. Do not use any wheel that has been overheated regardless of appearance. Even if a wheel does not appear to be obviously burned, inspect the labels, tire bead, brake drum and high temperature nylon spacer for evidence of charring, melting, blistering or burning.

A wheel may discolor from excessive heat. It can appear a dull grayish color and will not polish to a bright finish as a typical wheel would.

Any wheel run with a flat tire longer than the time necessary to immediately pull off the road should be checked for excessive heat damage.

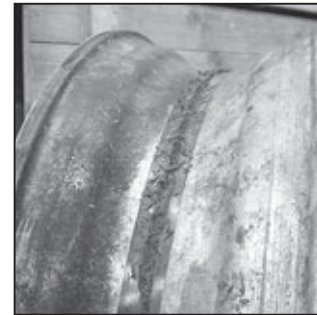


Charred Sticker (prior to 2009)

After January 2009 the new Alcoa Logo may not show heat damage.

A blistered, charred, blackened or cracked-looking logo decal on an Alcoa wheel may indicate that the wheel has been exposed to excessive heat as shown in picture to the left, or discoloration as shown in picture to the right

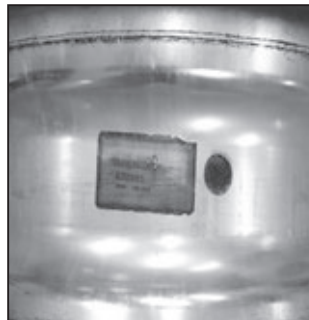
Inspect all axle end components for signs of exposure to excessive heat. Pay particular attention to brake drums (or discs), high temperature nylon spacer wheel liners and tire beads. If these components show signs of overheating, the entire assembly, including the wheel, should be replaced.



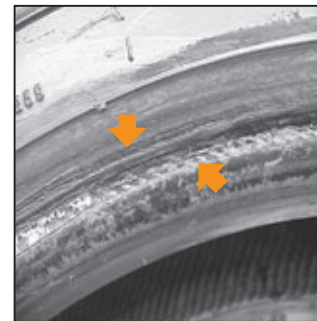
Discoloration of Wheel



Charred High Temperature Nylon Spacer



Charred Heat Indicator Drop Center (2009 and after)



Charred Rubber



Charred Heat Indicator (2009 and after)

Wheels manufactured starting in January 2009 will have a 1 inch clear round heat indicator located next to the roll stamp on the inside shown on the left and right, along with the same 1 inch clear round heat indicator located on the tire side drop well as shown in the photo above.

If either of these round labels show signs of blistering, or have a charred, blackened, or cracked look, this may indicate that wheel has been exposed to excessive heat.



Charred Heat Indicator (2009 and after)

IF ANY OF THE ABOVE CONDITIONS ARE SEEN, REMOVE THE WHEEL FROM SERVICE IMMEDIATELY. THIS INCLUDES ANY HEAT DAMAGE TO THE TIRE, DISCOLORATION TO THE WHEEL, AND OR BRAKE DRUM, AND ANY BURNT OR CHARRED LABELS.

2