

Wheaton Arts and Cultural Center

WUDAC Meeting

February 14, 2023



Montgomery County DEPARTMENT OF GENERAL SERVICES



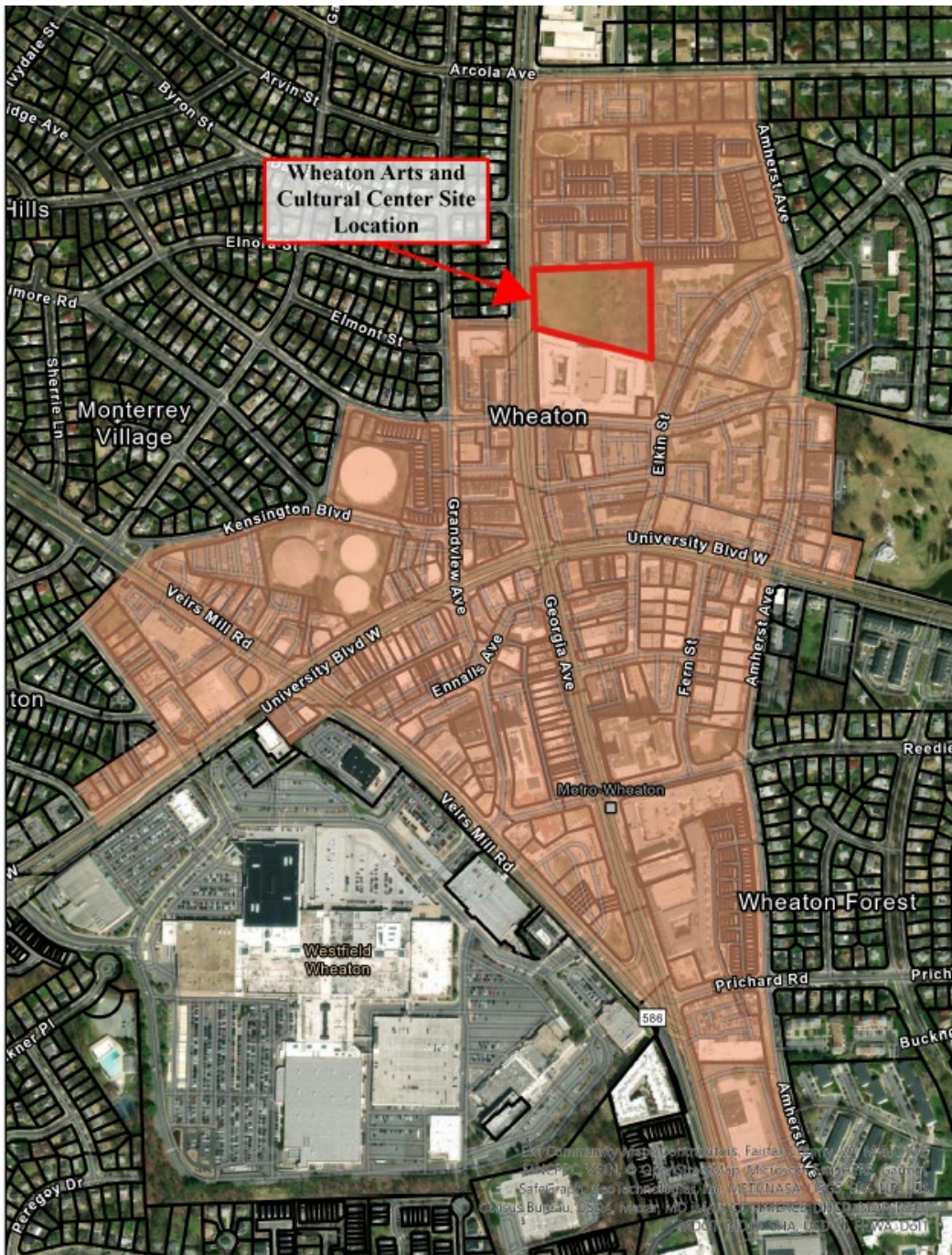
Montgomery County Department of General Services
Office of Planning and Development
101 Monroe Street, 9th Floor
Rockville, MD 20850
240-777-6071
OPD.DGS@montgomerycountymd.gov

Project History

- **Preliminary Program Plan and Business Plan – Completed Summer 2019**
- **Program of Requirements – Completed Spring 2020**
- **Test Fits / Sites Reviewed**
 - Lot 13 Remnant
 - Wheaton HQ Retail
 - Wheaton Gateway
 - Westfield Wheaton Mall
 - Lot 14
 - Lot 17
 - Former WMATA Georgia Avenue Parcel
- **CE Included Project Funding in Recommended FY24 Capital Budget – January 2023**



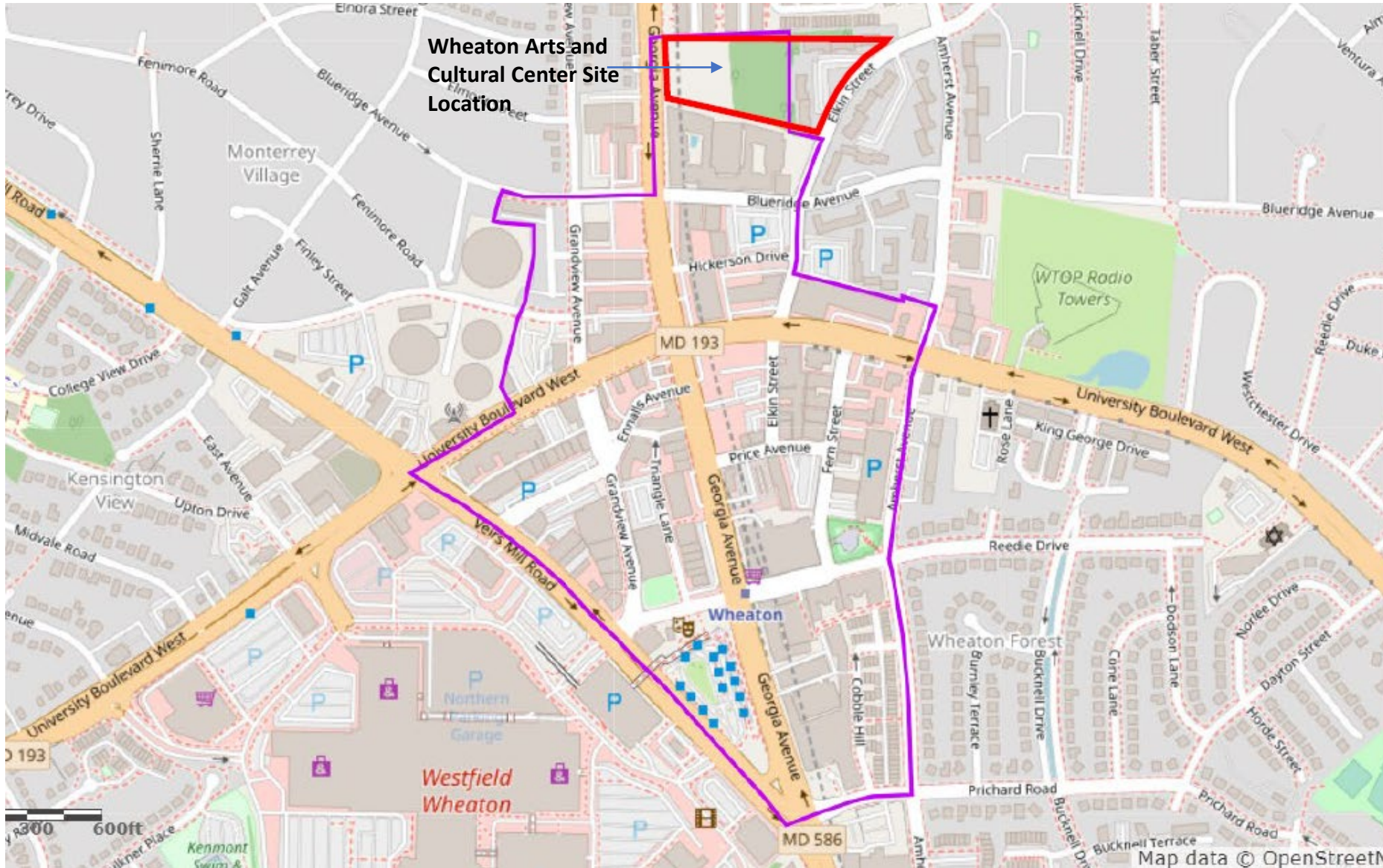
Wheaton Arts and Entertainment District



Montgomery County DEPARTMENT OF GENERAL SERVICES



Wheaton Central Business District



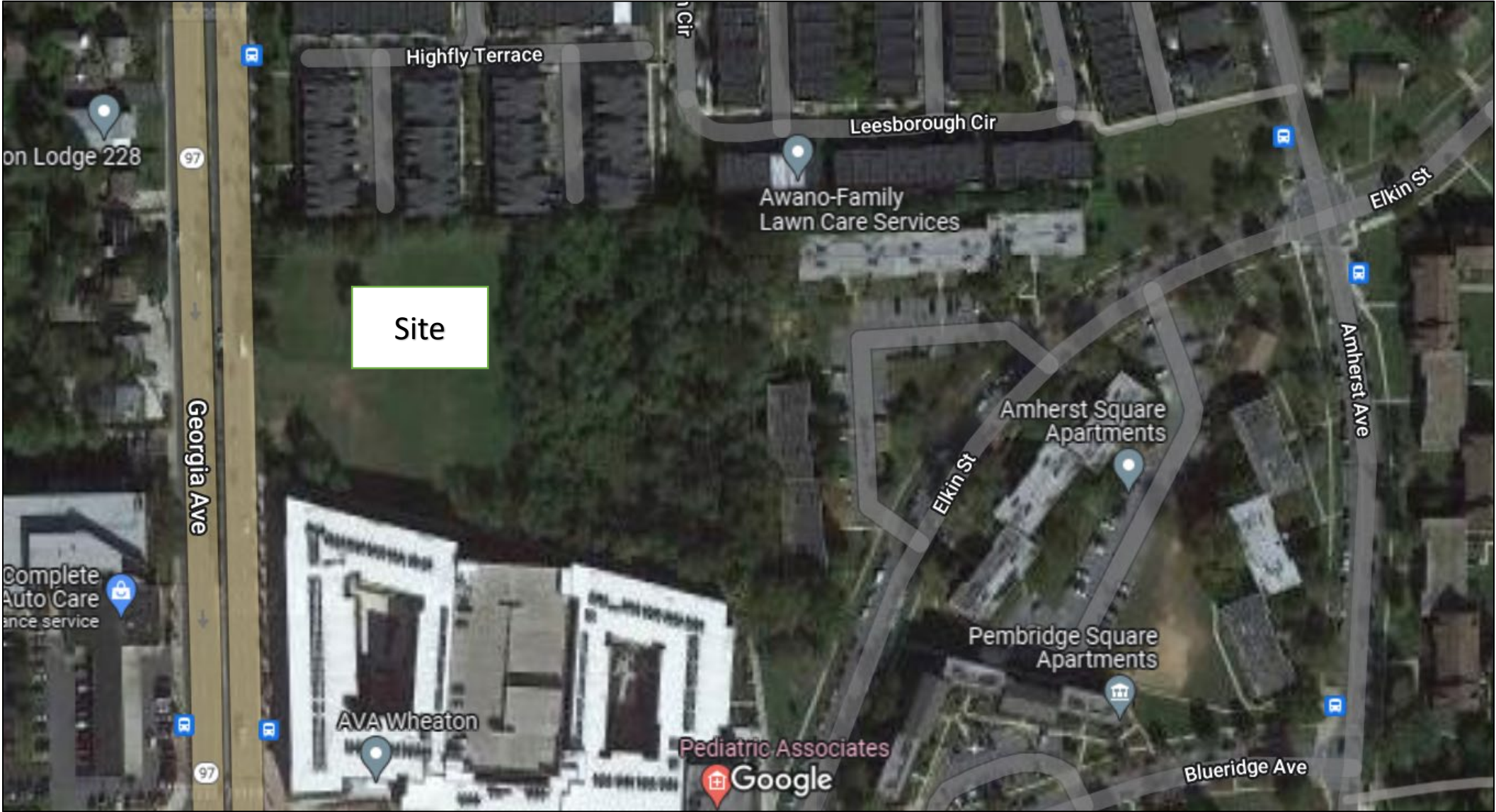
Montgomery County DEPARTMENT OF GENERAL SERVICES



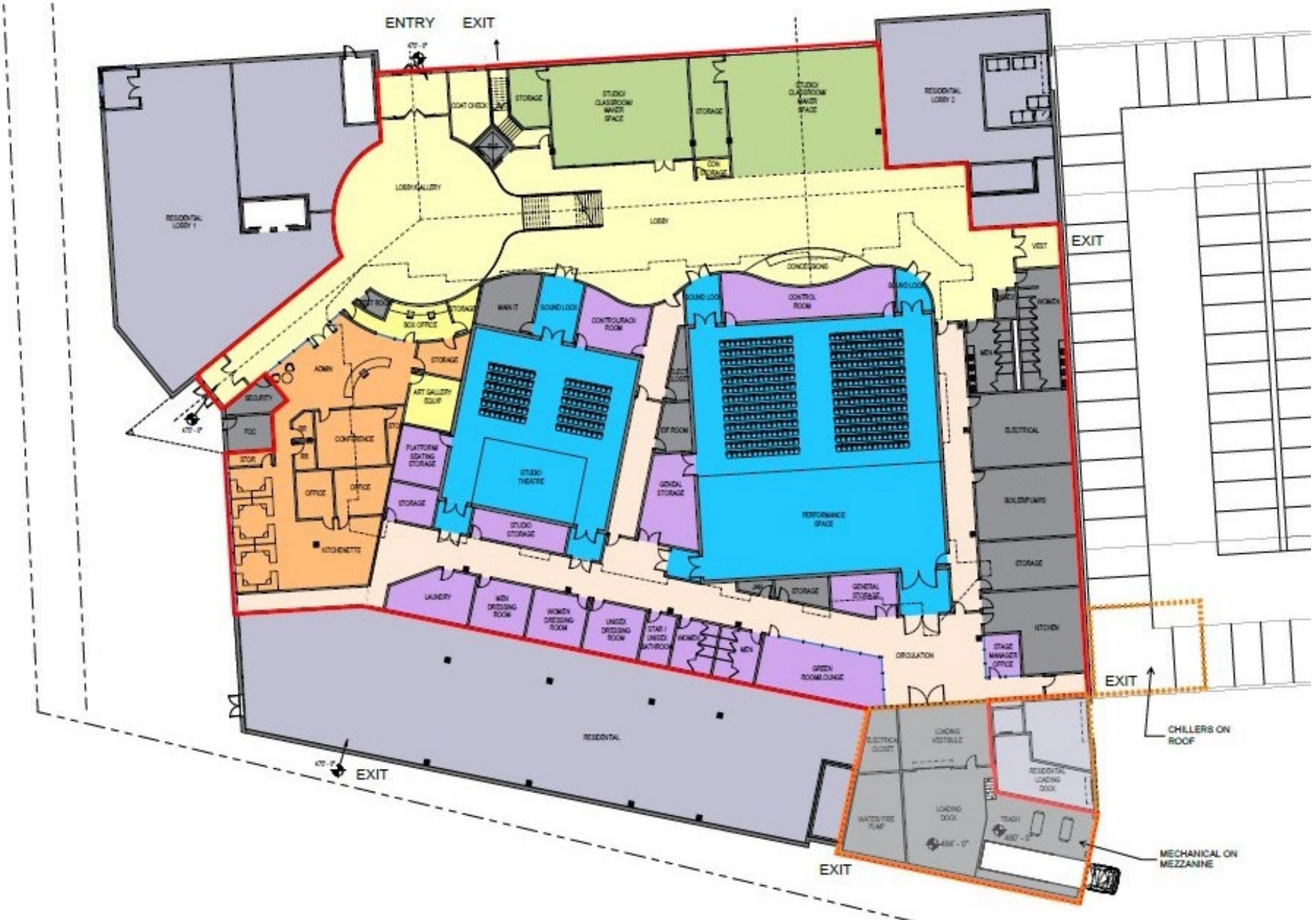
Delivering Great Service!

Map data © OpenStreetM...

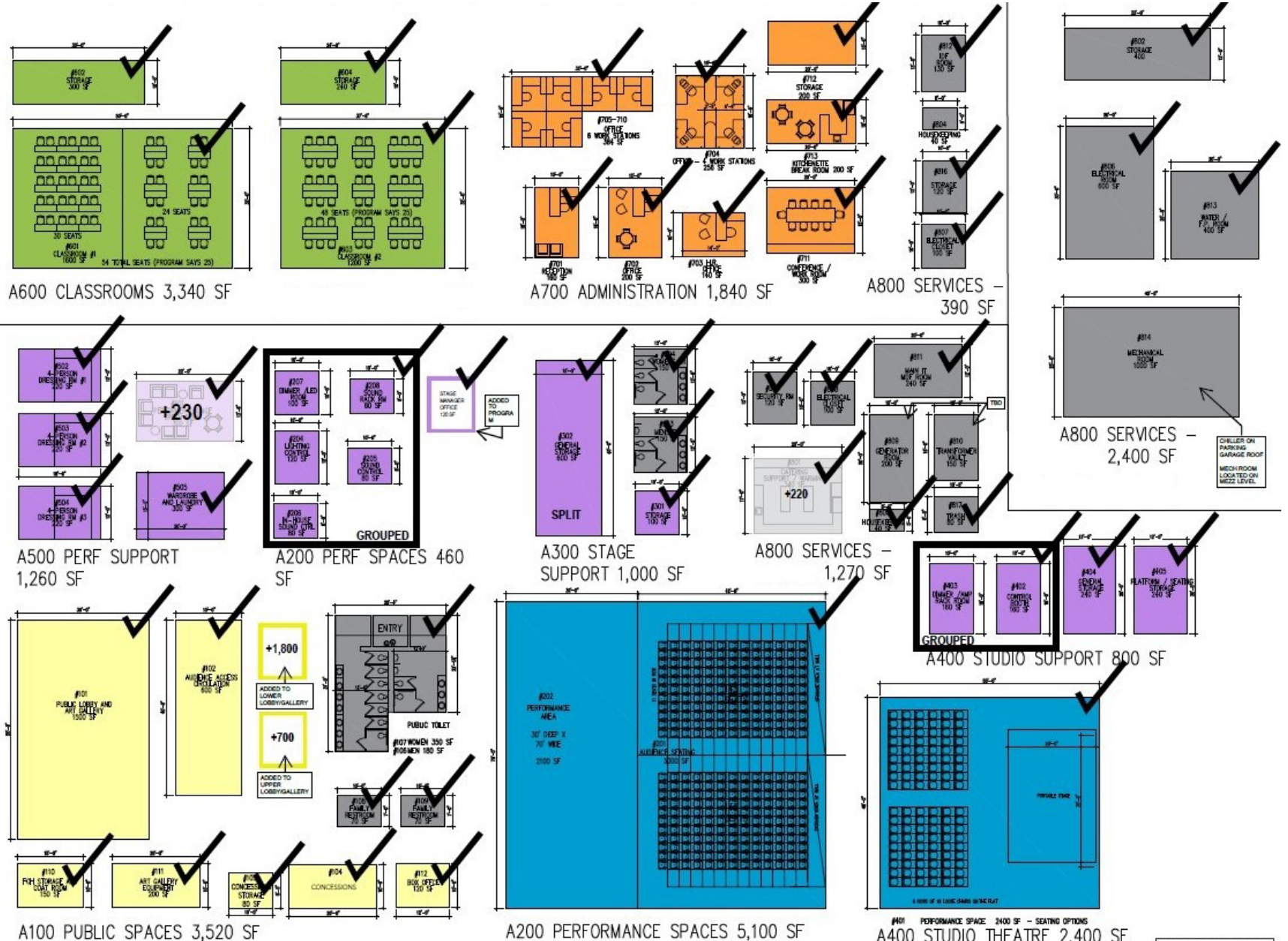
Site Aerial



Arts and Cultural Center Layout

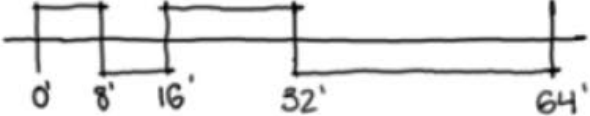
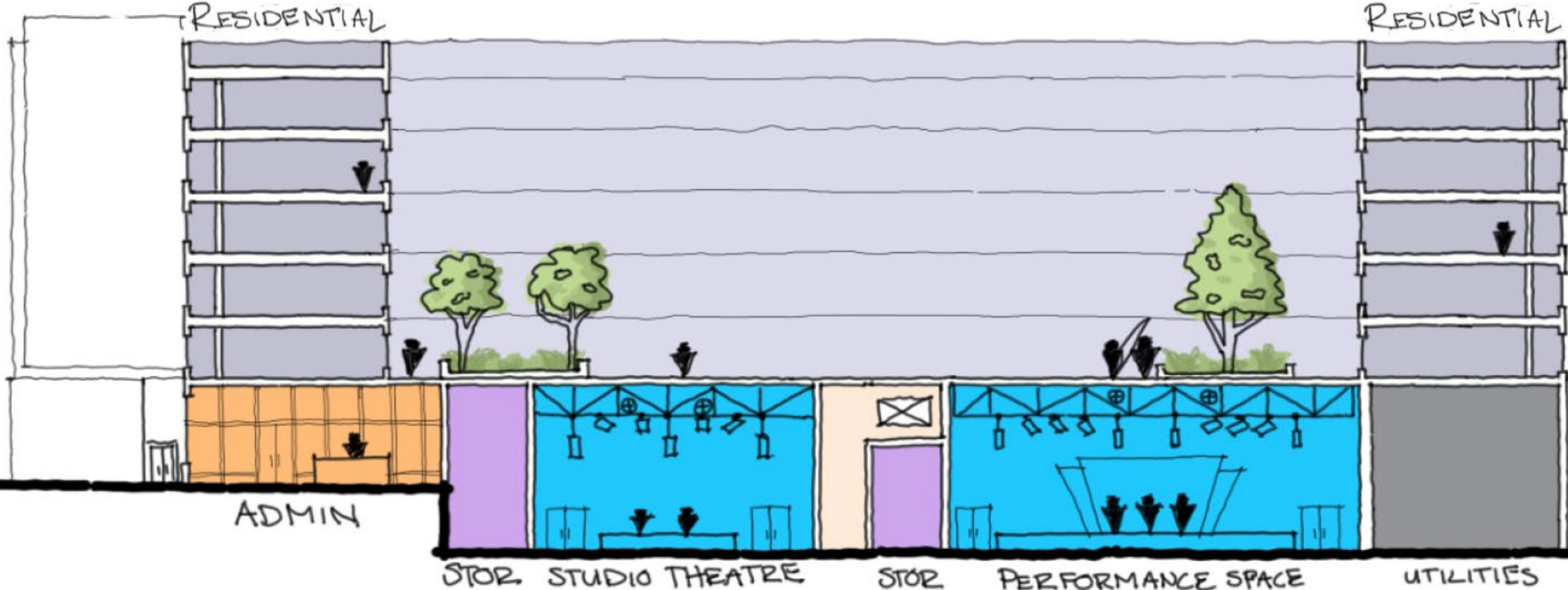


Arts and Cultural Center POR Components

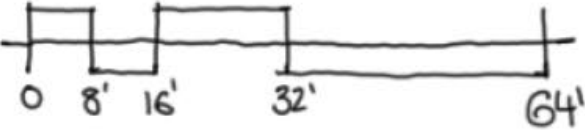
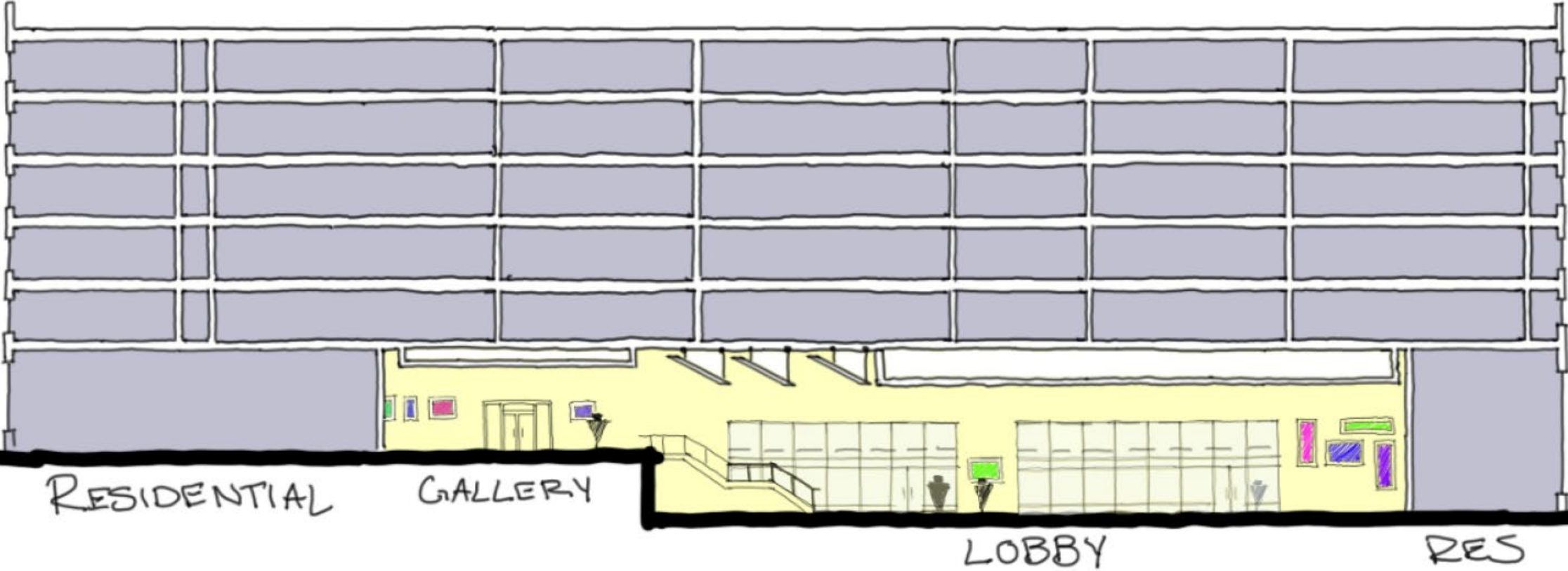


TOTAL : 39,600 GSF
NOT INCLUDING
MEZZ MECH SPACE.

Art and Cultural Center Section



Art and Cultural Center Section



Next Steps

- **Funding Approval**
 - Council approval Spring 2023
- **Design, Entitlements and Permitting**
 - **FY24-FY26**
- **Construction and Interior Fit Out**
 - **FY27-FY29**

