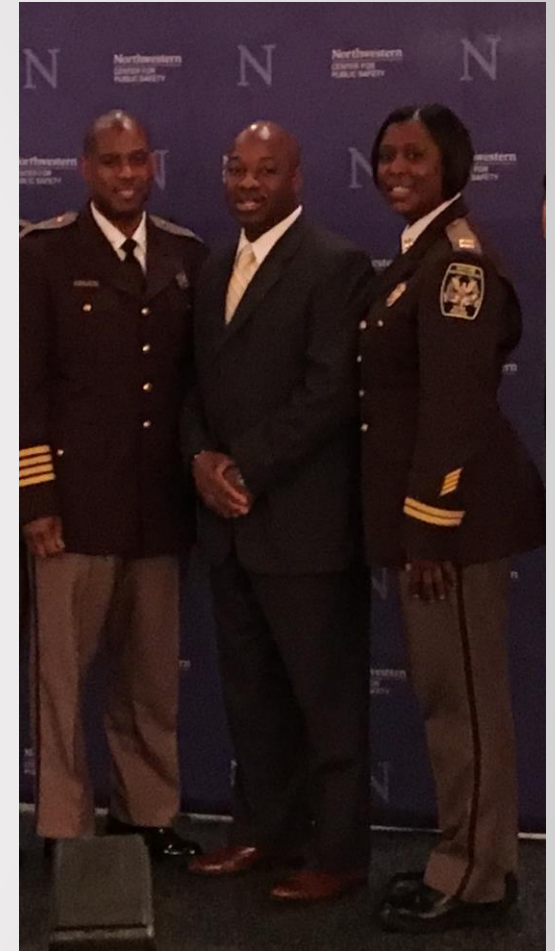


Maryland-  
National Capital  
Park Police  
Montgomery  
County Division

Chief Darryl W. McSwain

# Montgomery County Division

- The Maryland-National Capital Park Police was **founded in 1954** by the Maryland-National Capital Park and Planning Commission (M-NCPPC).
- **116 positions** – 94 sworn and 22 civilian personnel.
- Operate **24-hours** per day/7 days per week





- Jurisdiction – Spread across **496 square miles** & over **36,000 acres** of land
- Welcomes **14 million** visitors each year
- M-NCPPC property includes **422 parks**, **235 miles** of trails, 282 playgrounds, swimming pools, campgrounds, golf courses, horse stables, soccer stadiums, and stream valleys.

# Maryland-National Capital Park Police - Montgomery County Division



Our highly-visible patrol units police parkland 24 hours a day by car, foot, ATV, or bicycle. Our Special Operations Section Officers are cross-trained in **horse-mounted, motorcycle, and marine** patrols.



# Crime Statistics

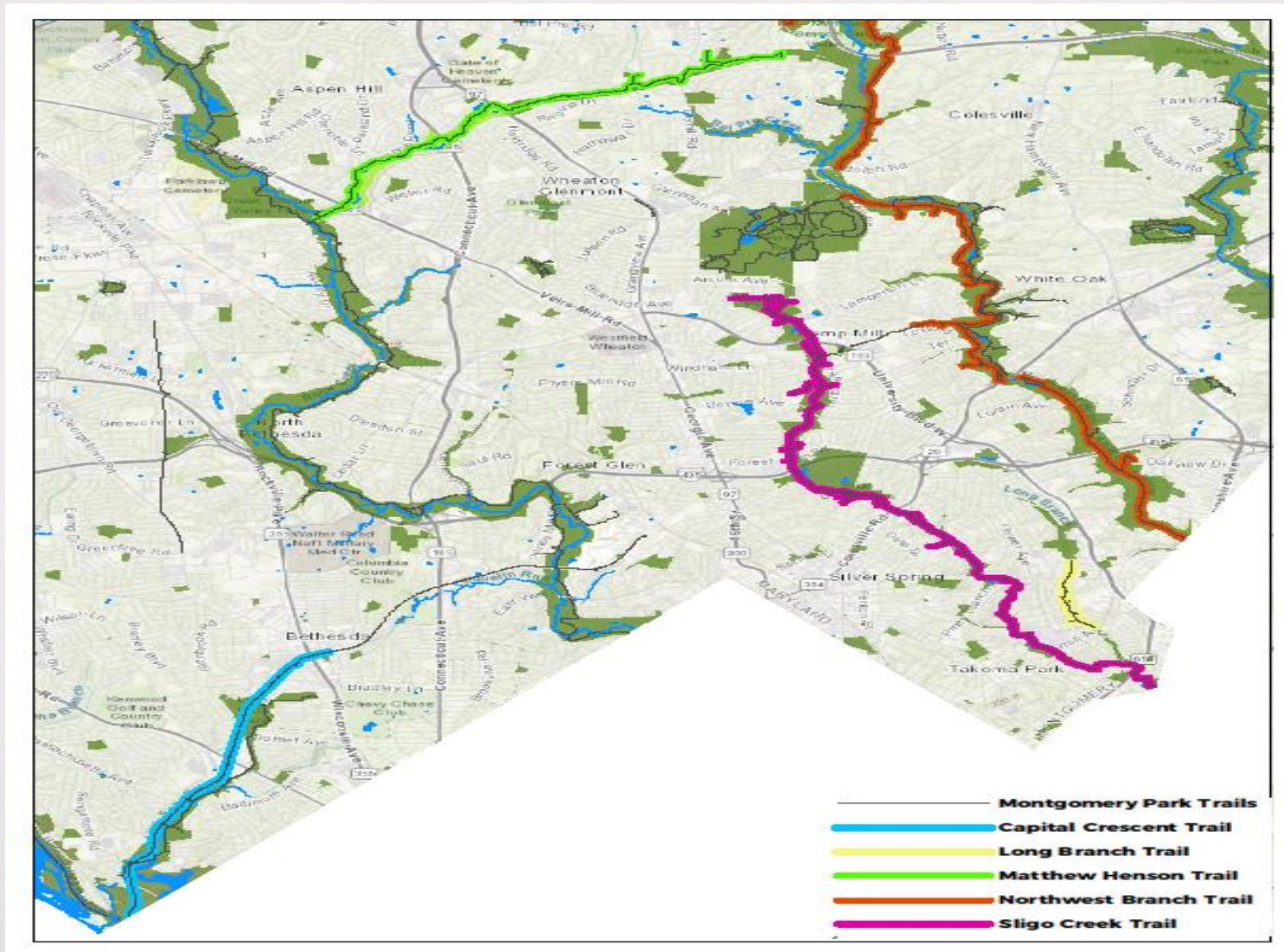
CRIME	01/01/17 - 12/31/17	01/01/18 - 12/31/18	PERCENTAGE CHANGE (+, -)
HOMICIDE	2	0	-100%
RAPE	1	5	400%
ROBBERY	12	4	-67%
AGGRAVATED ASSAULT	4	7	75%
BURGLARY	9	6	-33%
THEFT	99	110	11.11%
AUTO THEFT	2	3	50%
SIMPLE ASSAULTS	22	22	0.00%
VANDALISMS	162	136	-16.04%
WEAPONS	8	10	25.00%
SEX OFFENSES	12	10	-16.66%
<b>TOTALS</b>	<b>333</b>	<b>313</b>	<b>-6.00%</b>

\*\* There is no indication that any of the reported rapes are related, nor is there evidence that they were random. Two were closed by arrest and two other cases have been suspended because the victims have refused to cooperate in the investigation; one case remains active as MCP and Park Police work with the State's Attorney's Office. The sex offenses generally involved instances of indecent exposure or unwanted touching.

# Five Trails of Emphasis

- Capital Crescent Trail
- Longbranch Stream Valley Trails #1-2
  - Matthew Henson Trail
- Northwest Branch Stream Valley Trail #3
- Sligo Creek Stream Valley Trails #1-3

# Montgomery Park Trails





# Why the Five Trails?

- Reported Crimes
- Population Density
- Trail Usage
- Previous Gang Activity
- People in Transition/Encampments
- Perception of Crime (Community)

Our park system remains very safe, however we are utilizing the criteria above to increase our presence on certain sections of trails as a proactive measure to deter unlawful acts, help those in need of mental illness/substance abuse referrals, and continue to maintain a peaceful environment for pedestrians and bicyclist alike.

# Deployment Strategies

- Foot Patrol
- Motorcycle
- Patrol Vehicle
- All-Terrain Vehicle (ATV)
- Horse
- Park Rangers/ Volunteers
- Bicycle
  - ❖ Electric Bikes

# Proposed Initiatives

Seeking to leverage technology to enhance safety:

- Drones – critical missing persons/encampments
- Park PD App - closures, safety alerts, etc.
- Wi-Fi in the Parks
- Project Lifesaver
- Expansion of Call Boxes (with blue lights)
- Crime Mapping Software

# Community Outreach Efforts

- Create Multi-Lingual Pamphlets
- ADA Compliant Website/Facilities
- On-line Payment options
- Social Media ( Facebook, Twitter, Instagram)
- Strategic Planning
- Ability to Report Crimes Anonymously
- Park Police Sponsored Community Events
- Annual Park Police Community Report

# Training

**Maryland-National Capital Park Police routinely conducts internal training for staff in the areas of:**

- ADA Compliance
- Intellectual and Developmental Disabilities
- Victim Services
- Human Trafficking
- Crisis Intervention and De-Escalation
- EEO
- Cultural Sensitivity

# Montgomery County Division Park Police Volunteers



- November 2018 marked the **25th Anniversary** of the Park Police Volunteer Unit.
- **46 volunteers** help augment our patrol services.
- Patrol parks via horse, bike and vehicle.
- Contributed **27,865 service hours** – the equivalent of 13.5 years.

# Montgomery County Division Park Police Volunteers



# Montgomery County Division Park Police Volunteers





# Park Police: Women's History Month Celebration-March 2018



# Montgomery County Division: National Night Out 2018



# Contact Information

**Maryland-National Capital Park Police- Montgomery County Division**

**Communications Section:**

**Non-Emergency 301-949-8010**

**Emergency 911**

# Contact Information

Chief Darryl W. McSwain 301-929-2701  
Darryl.Mcswain@mncparkpolice.org

Captain Nicole Adams 301-929-2719  
Nicole.Adams@mncparkpolice.org

Lieutenant Jeff Coe 301-929-2722  
Jeffrey.Coe@mncparkpolice.org



Questions?