

# MD 97 Montgomery Hills

from MD 192 (Forest Glen Road)  
to MD 390 (16th Street)



STATE HIGHWAY  
ADMINISTRATION



## Project History

- Project Initiated – 2012
- Purpose and Need Open House – March 2012
- Alternatives Public Workshop – June 2013
- Stakeholder Group Formed – 2013
- Business Owner/Community Survey – Summer 2015
- Public Hearing – December 2015
- Value Engineering Completed – April 2016
- Refined Design/Engineering to Reduce Costs & Impacts – 2017 to 2018
- Additional Traffic Analyses – 2017 to 2018
- Coordination with MNCPPC on Sector Plan/Project – 2018 to Present

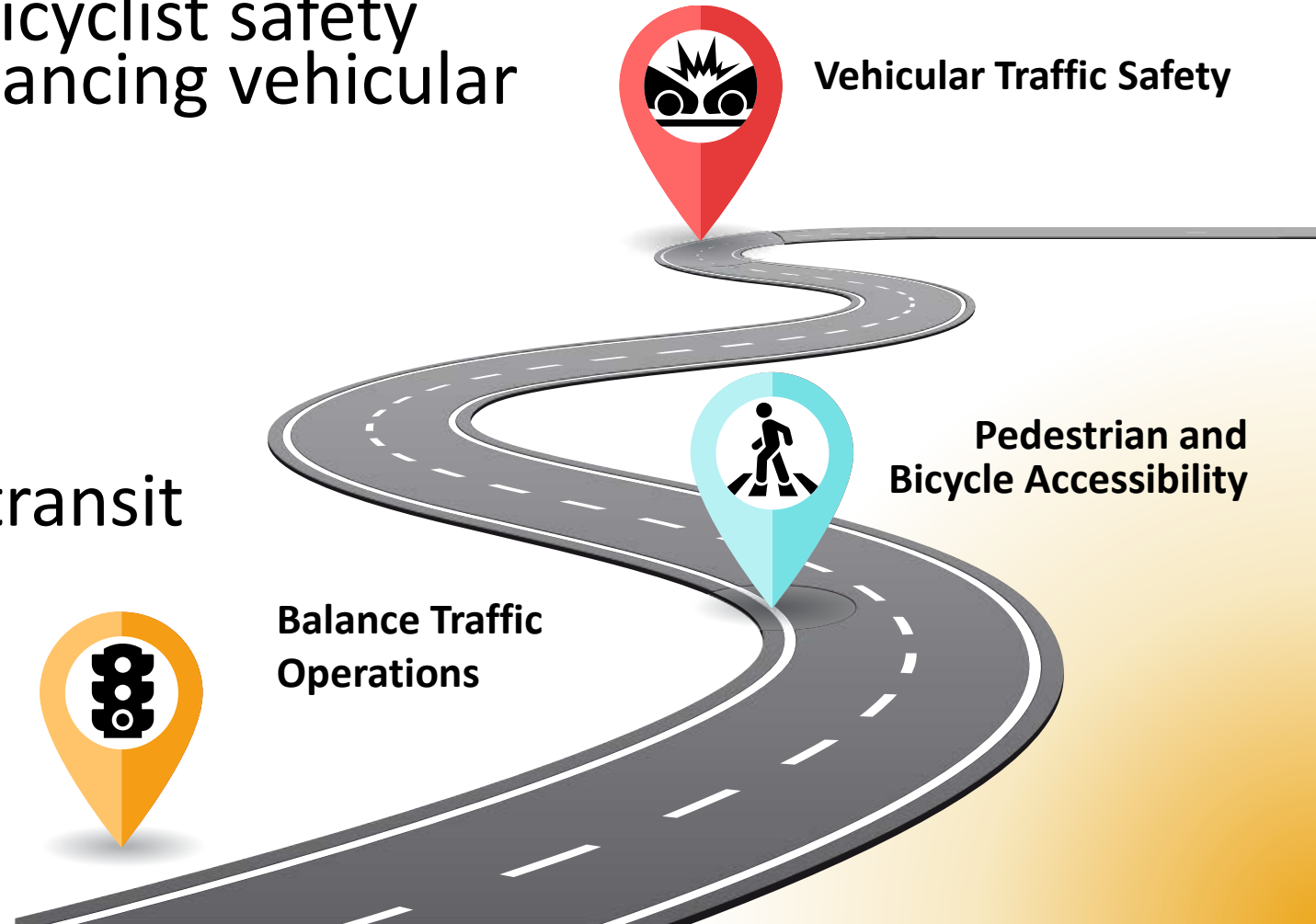
# MD 97 Montgomery Hills

from MD 192 (Forest Glen Road) to MD 390 (16th Street)



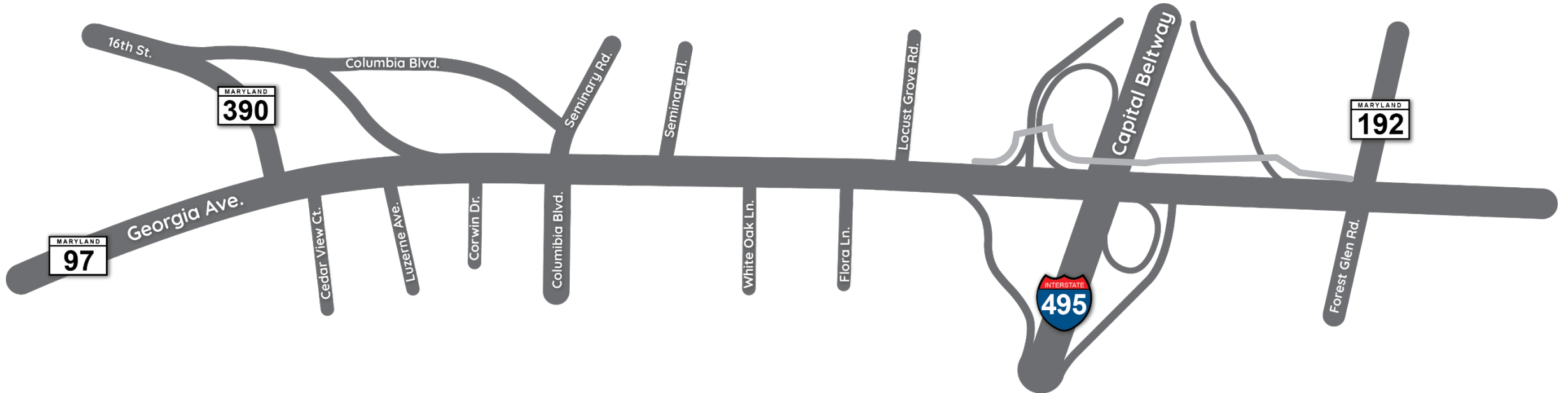
## Purpose and Need

- Improve pedestrian and bicyclist safety and accessibility while balancing vehicular mobility
- Improve vehicular safety
- Accommodate proposed transit enhancements
- Establish a sense of place within the corridor



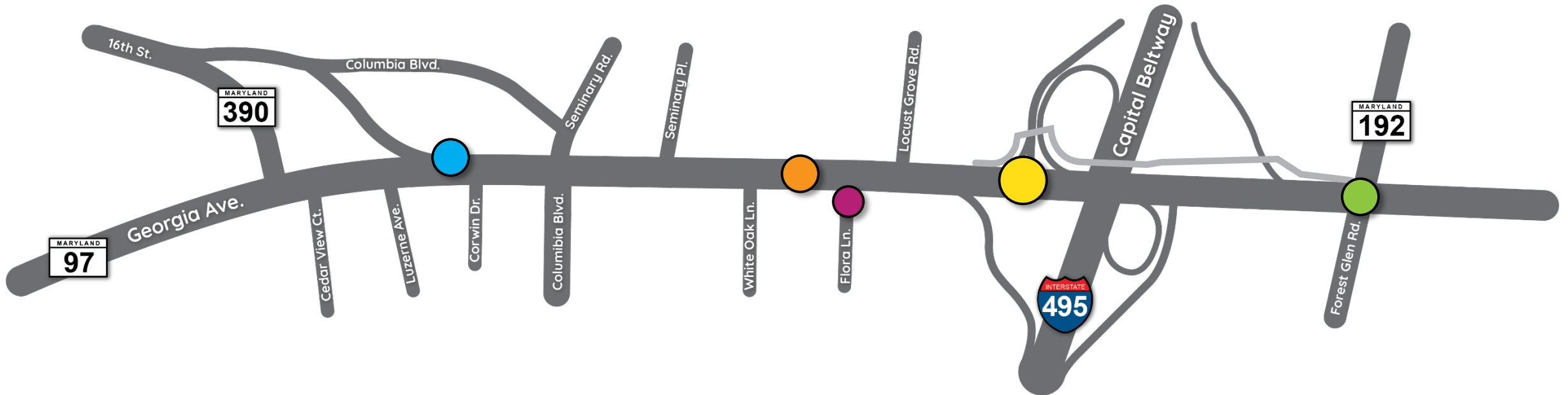
# MD 97 Montgomery Hills

from MD 192 (Forest Glen Road) to MD 390 (16th Street)



# MD 97 Montgomery Hills

from MD 192 (Forest Glen Road) to MD 390 (16th Street)

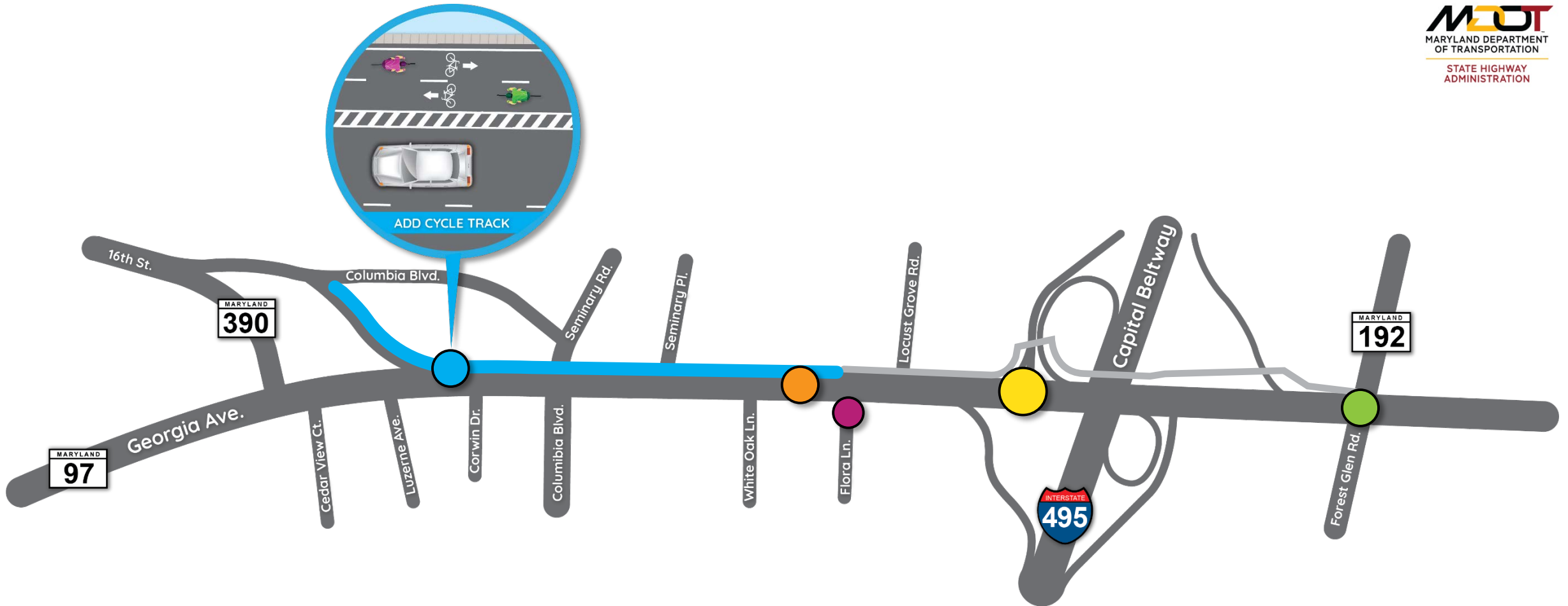


## Key Improvements – Alternative 5B Modified



# MD 97 Montgomery Hills

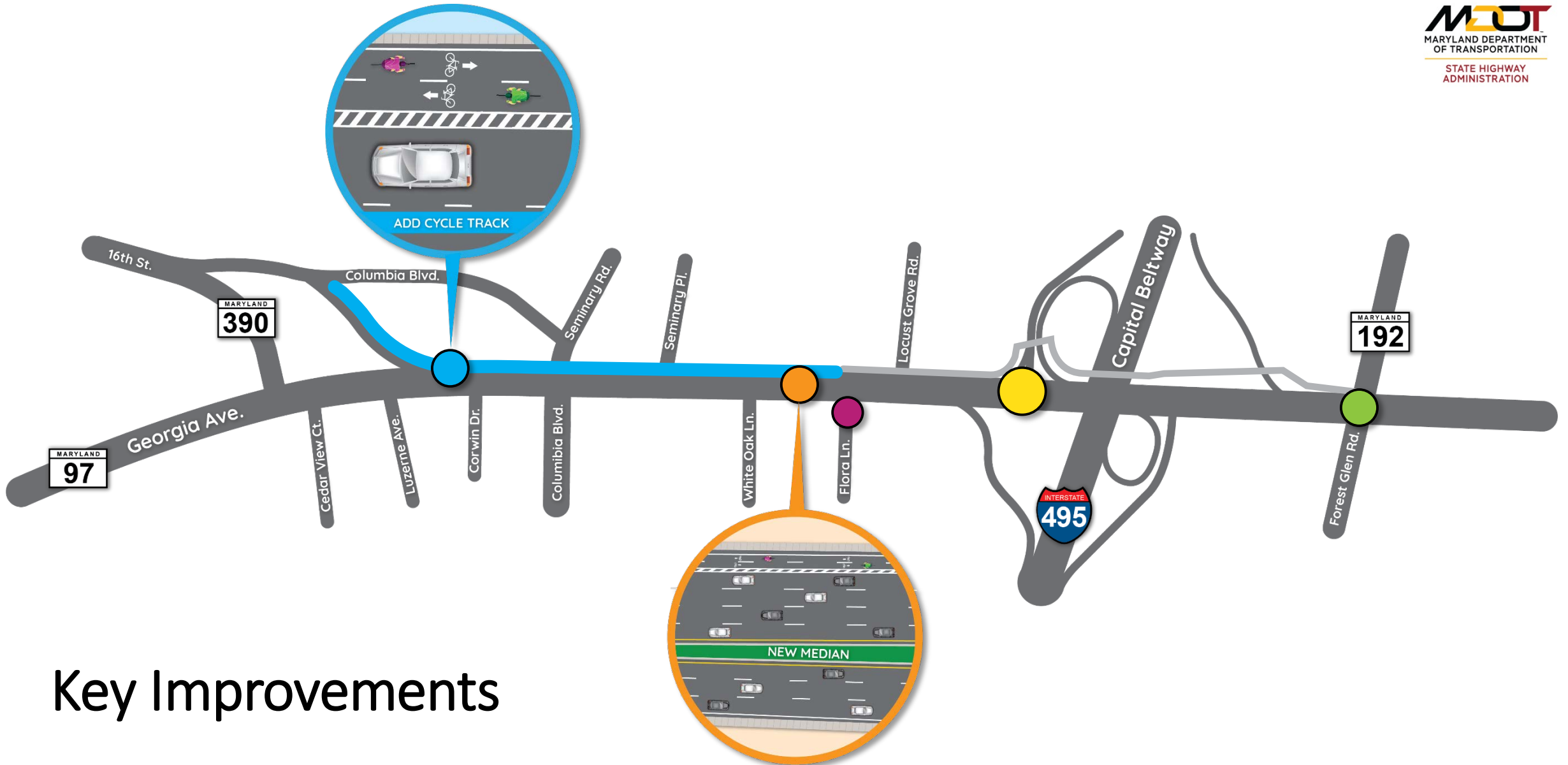
from MD 192 (Forest Glen Road) to MD 390 (16th Street)



## Key Improvements

# MD 97 Montgomery Hills

from MD 192 (Forest Glen Road) to MD 390 (16th Street)



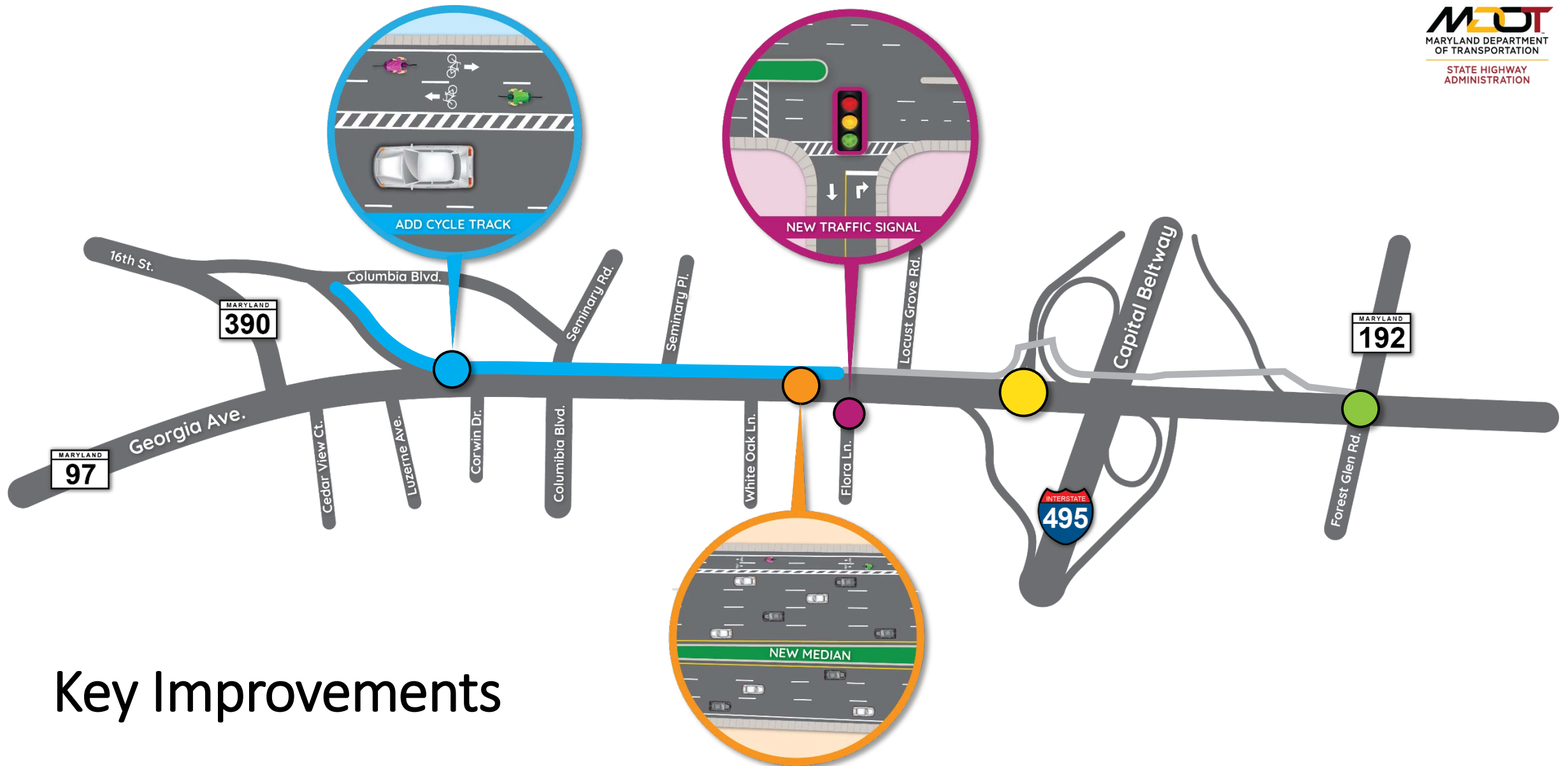
## Key Improvements

# MD 97 Montgomery Hills

from MD 192 (Forest Glen Road) to MD 390 (16th Street)

MARYLAND  
97

**MDOT**  
MARYLAND DEPARTMENT  
OF TRANSPORTATION  
STATE HIGHWAY  
ADMINISTRATION



## Key Improvements

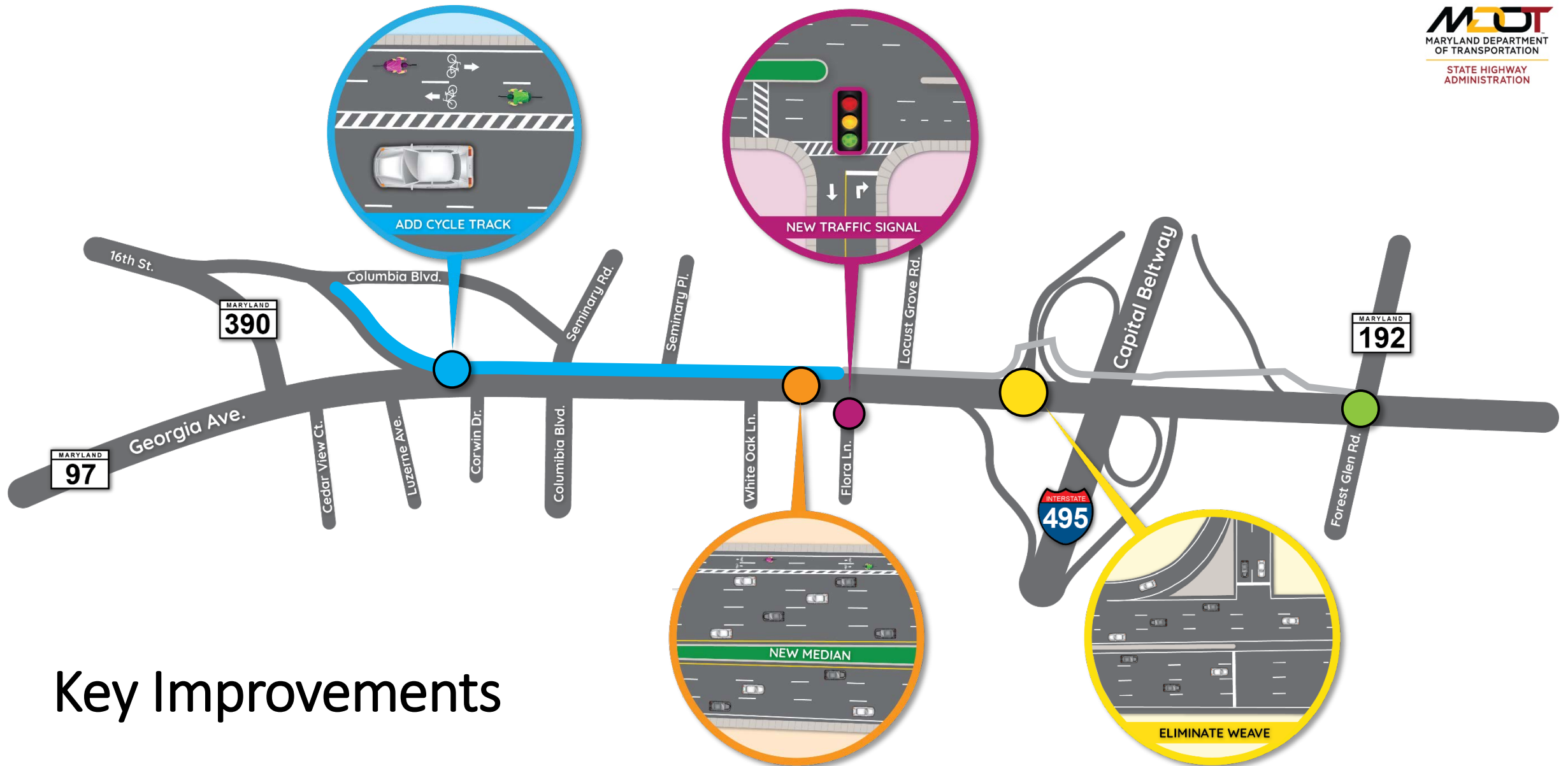


# MD 97 Montgomery Hills

from MD 192 (Forest Glen Road) to MD 390 (16th Street)

MARYLAND  
97

**MDOT**  
MARYLAND DEPARTMENT  
OF TRANSPORTATION  
STATE HIGHWAY  
ADMINISTRATION



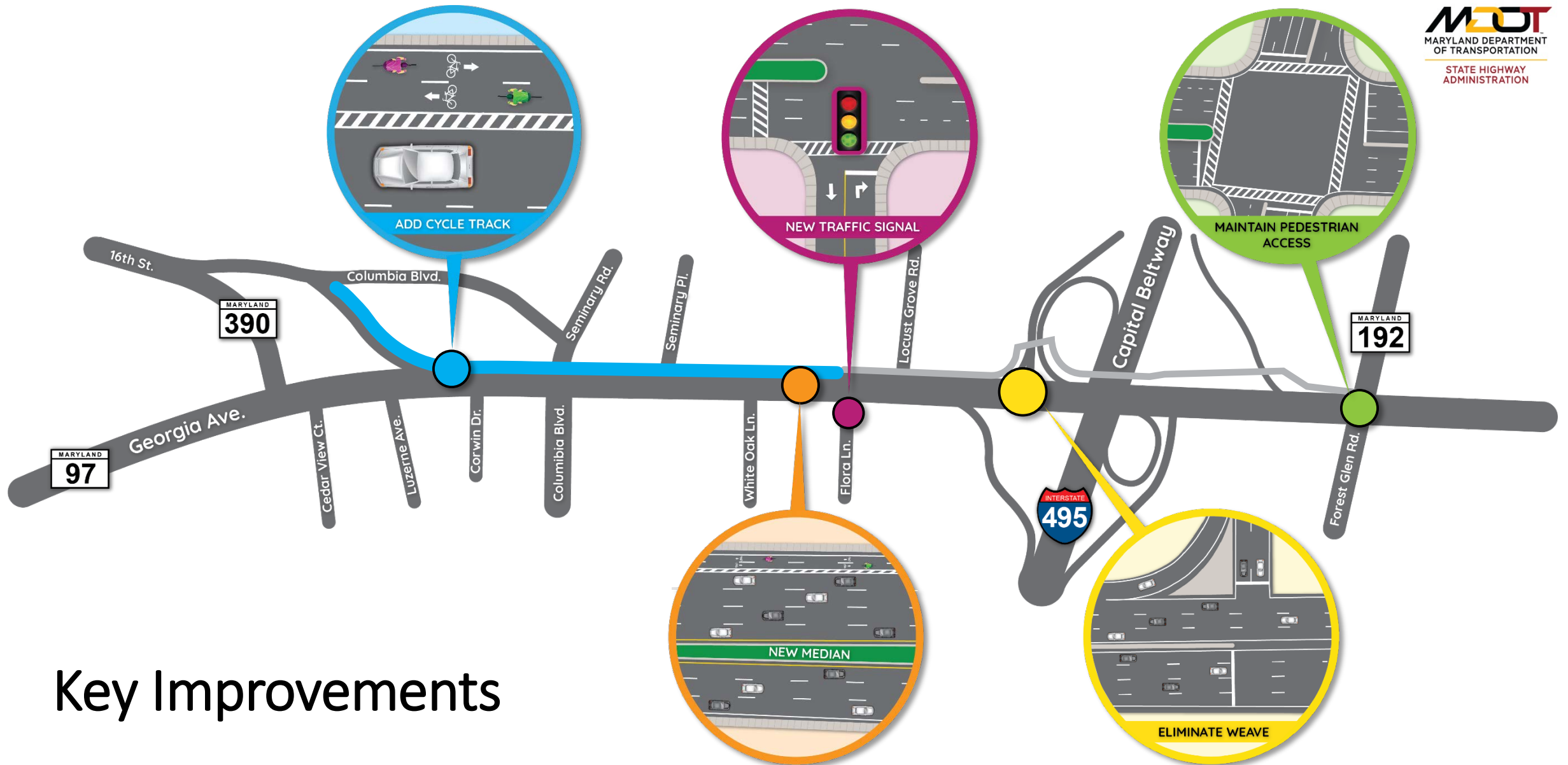
## Key Improvements

# MD 97 Montgomery Hills

from MD 192 (Forest Glen Road) to MD 390 (16th Street)

MARYLAND  
97

**MDOT**  
MARYLAND DEPARTMENT  
OF TRANSPORTATION  
STATE HIGHWAY  
ADMINISTRATION



## Key Improvements

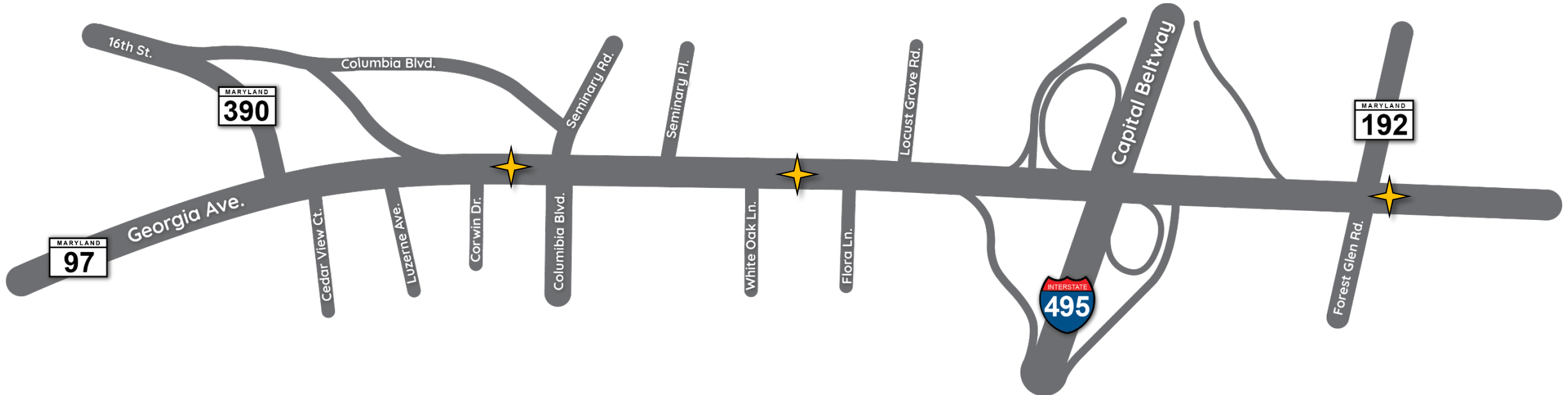


# MD 97 Montgomery Hills

from MD 192 (Forest Glen Road) to MD 390 (16th Street)



## Cross-Section Snapshots

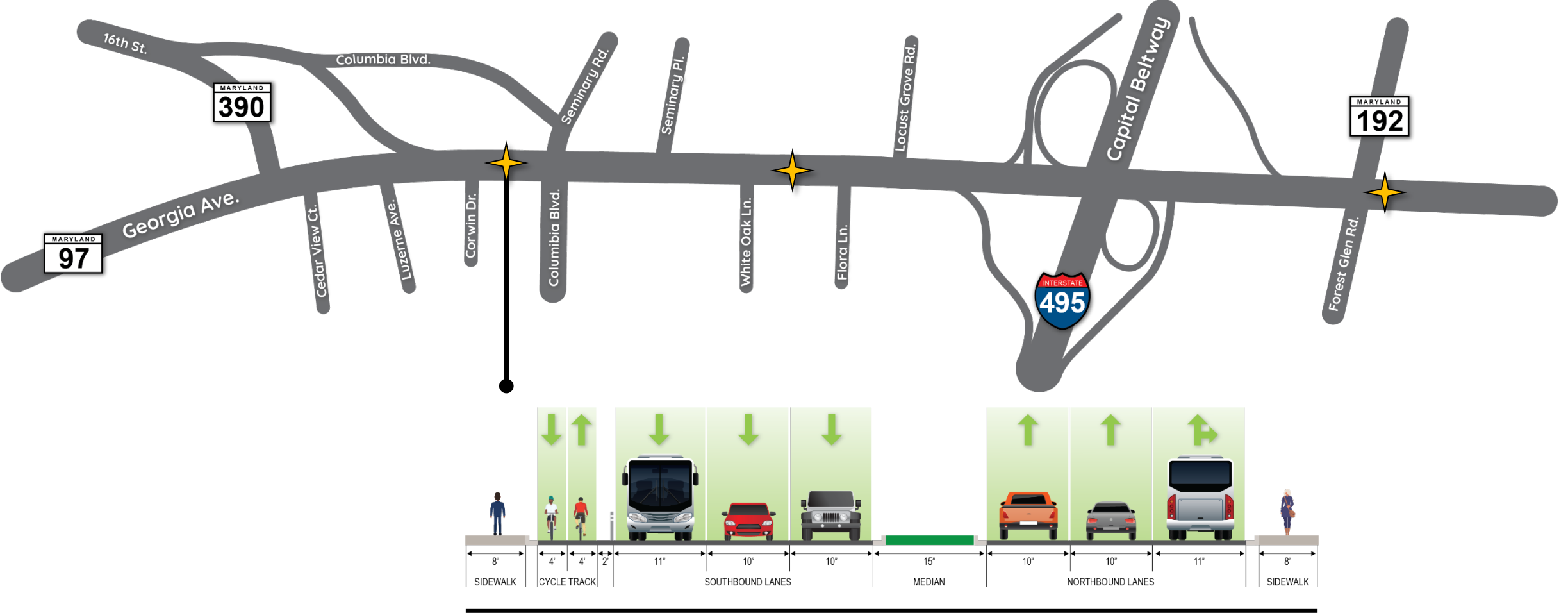


# MD 97 Montgomery Hills

from MD 192 (Forest Glen Road) to MD 390 (16th Street)



## Cross-Section Snapshots



MD 97 (GEORGIA AVE.) LOOKING NORTH - LUZERNE AVE. TO SEMINARY RD.

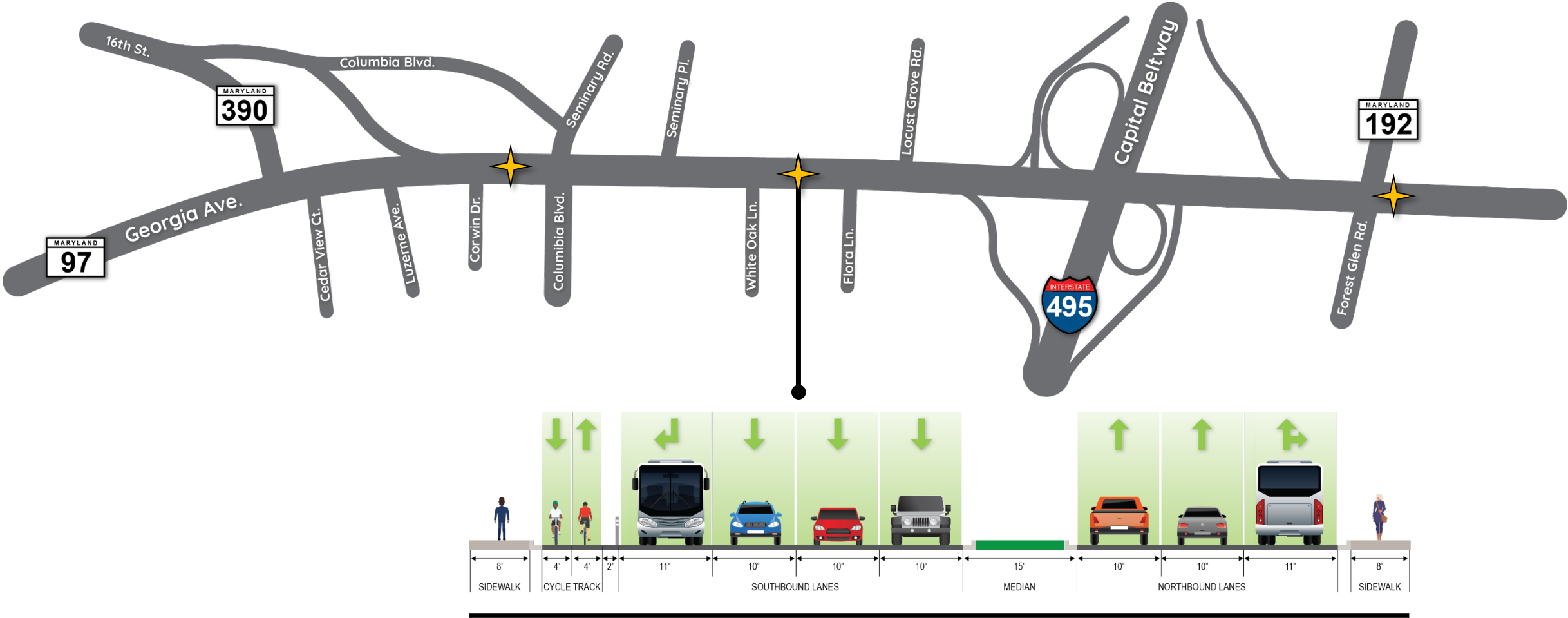


# MD 97 Montgomery Hills

from MD 192 (Forest Glen Road) to MD 390 (16th Street)



## Cross-Section Snapshots



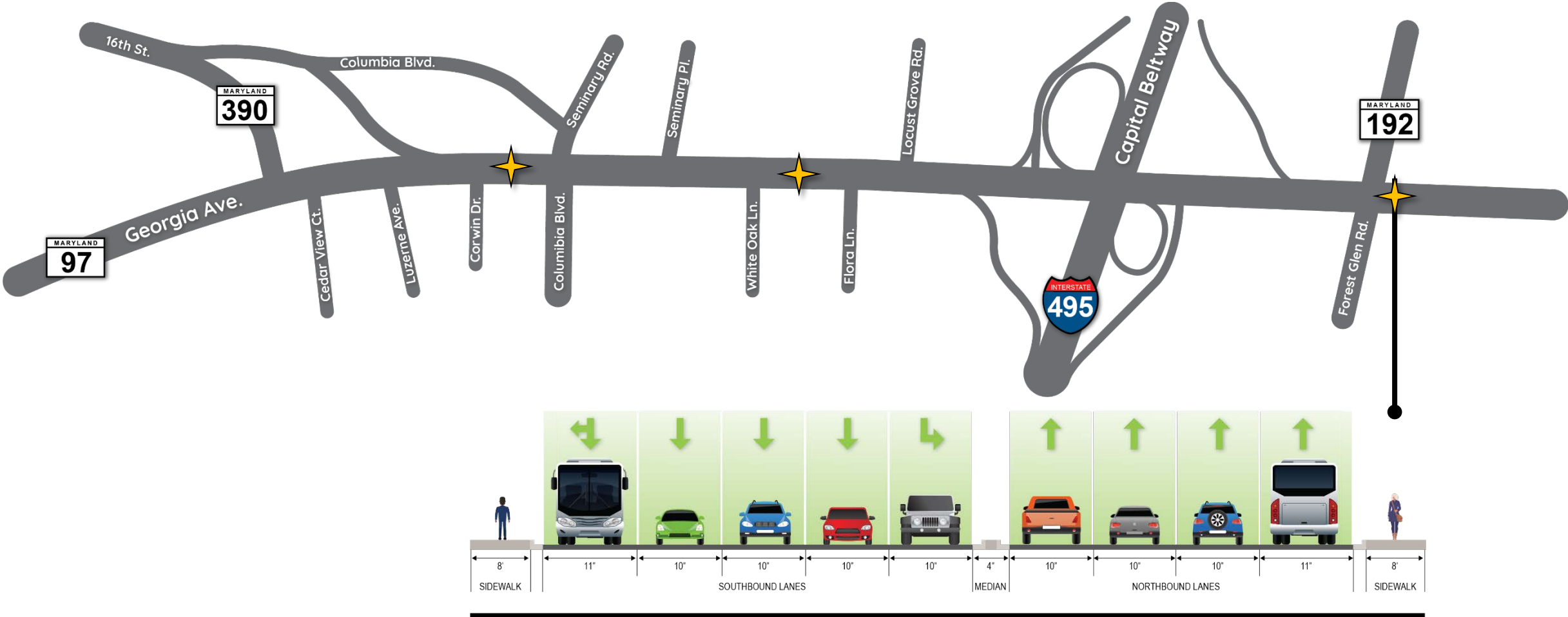
MD 97 (GEORGIA AVE.) LOOKING NORTH - SEMINARY PL. TO FLORA LN.

# MD 97 Montgomery Hills

from MD 192 (Forest Glen Road) to MD 390 (16th Street)



## Cross-Section Snapshots



MD 97 (GEORGIA AVE.) LOOKING NORTH - FOREST GLEN RD. TO END OF PROJECT



## Alternative 5B Modified--Key Takeaways

- Remove center reversible lane, provide new raised median
- 10-foot wide lanes, 11-foot wide outside lanes where needed for bus operations
- Two-way protected cycletrack on west side of MD 97, sidewalks on both sides
- Pedestrian crossing and new signal at Flora Lane
- Adds left-turn lanes on MD 97 at Forest Glen Road (SB), Flora Lane (SB), and Seminary Place (NB)
- Remove southeast loop ramp at I-495 to eliminate weave movements
- Consolidates movements at 16<sup>th</sup> Street eliminating high-speed slip ramp