

# VISION ZERO

Update to Civic Federation | December 8, 2025

# What is Vision Zero?

Building Layers of Safety to Prevent Serious and Fatal Injuries on Our Roadways







# Implementing Vision Zero

---

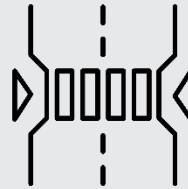
FY25 Wrap Up and FY26 Work Plan

# FY25 by the Numbers – part 1

**Continued advancement of HIN and bikeway projects. Two HIN corridors, Montgomery Village Avenue (County) and New Hampshire Avenue (State) under construction.**



29% decrease in serious and fatal crashes on high injury network (HIN) corridors compared to 2015-2019 average



18 high injury network corridors under study, design, or construction



7 pedestrian hybrid beacons and traffic signals installed.  
64 since Vision Zero began.



25 bikeway projects underway,  
4 under construction



5.9 miles of new sidewalk  
installed



189 resident engagement events

# FY25 by the Numbers – part 2

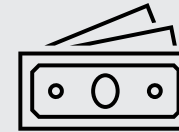
**Bills to expand automated speed enforcement to any high injury network corridor passed this session after three years of trying.**



7 safety bills supported and passed in Maryland General Assembly



89 intersections giving pedestrians a head start. 208 total as of 12/1/2025.



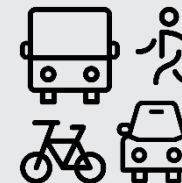
\$877,500 granted for addressing roadway departure crashes



15 walkability audits completed for Safe Routes to School



90 schools visited for safety education and project outreach




7 bikeway and sidewalk projects advancing to connect to Purple Line

# FY26 Work Plan

Find the current and past work plans on the [Vision Zero website](#).

An official website of [Montgomery County, Maryland](#) MC311




## Vision Zero

Translate 

Select Language

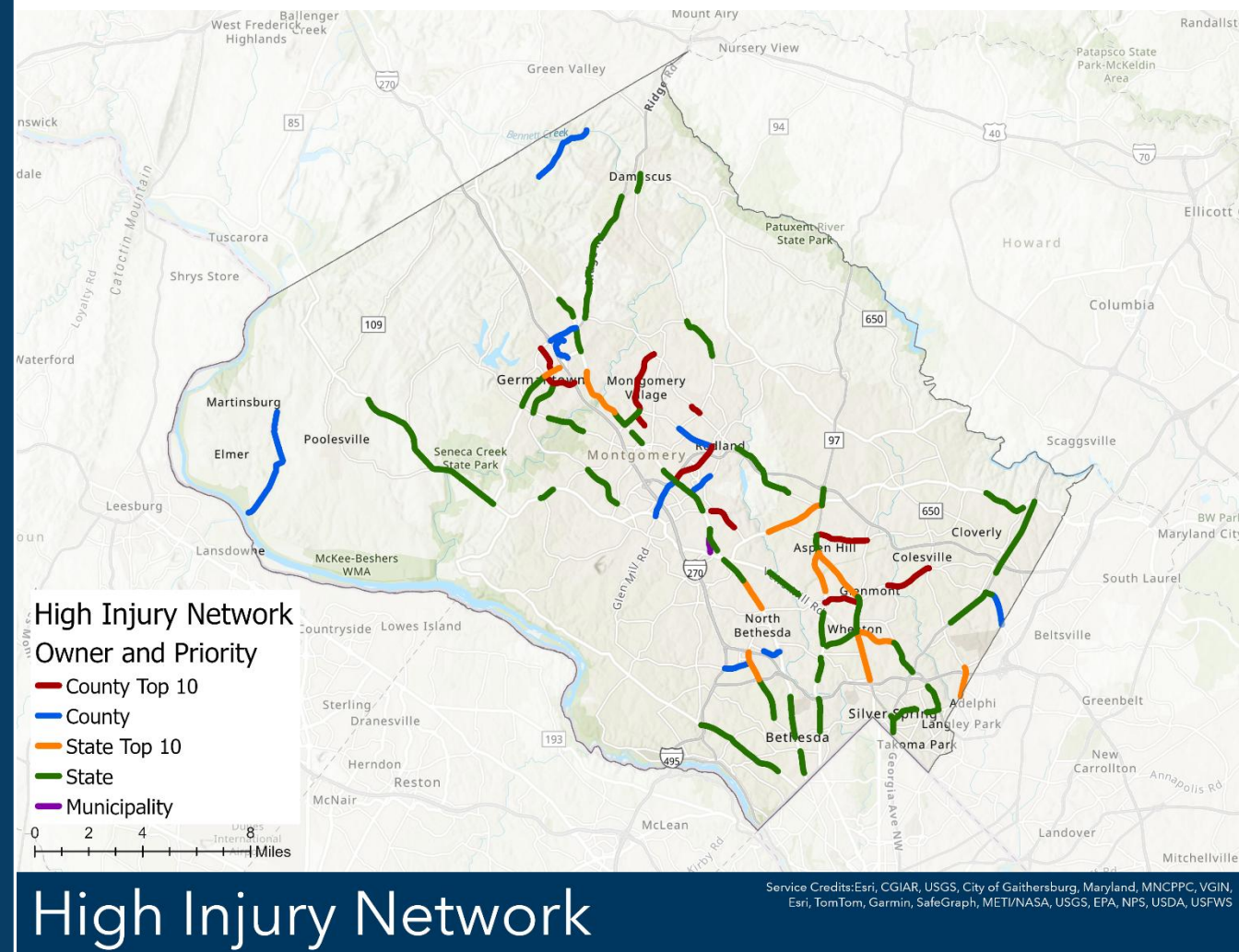
[Home](#) [About](#) [Plan and Reports](#) [Get Involved](#) [Updates](#) [Data](#) [Additional Resources](#) [Contact](#)

 **2026 Vision Zero Youth Ambassador Application**  
Applications will be accepted between November 17 and December 5. [Apply on the VZYA website](#).

# High Injury Network (HIN) Studies and Design

**Audits of top 10 County routes completed.**

- [Bel Pre Road](#) from Georgia Avenue to Layhill Road.
- [Cherry Hill Bikeway](#) from E Randolph Road to FDA Boulevard.
- Crystal Rock Drive from Father Hurley Blvd to Germantown Road
- [Montgomery Village Avenue and Midcounty Highway \(MD 124\)](#) (by SHA as part of Pedestrian Safety Action Plan)
- [Piney Branch Road](#) from Sligo Creek Trail at the western limits to New Hampshire Avenue (MD650)
- [Randolph Road from Connecticut Ave to Georgia Ave.](#)
- [University Blvd W](#) (by SHA as part of Pedestrian Safety Action Plan) from Georgia Avenue to Colesville Road.





# High Injury Network (HIN) Construction

## Advancing designed improvements.

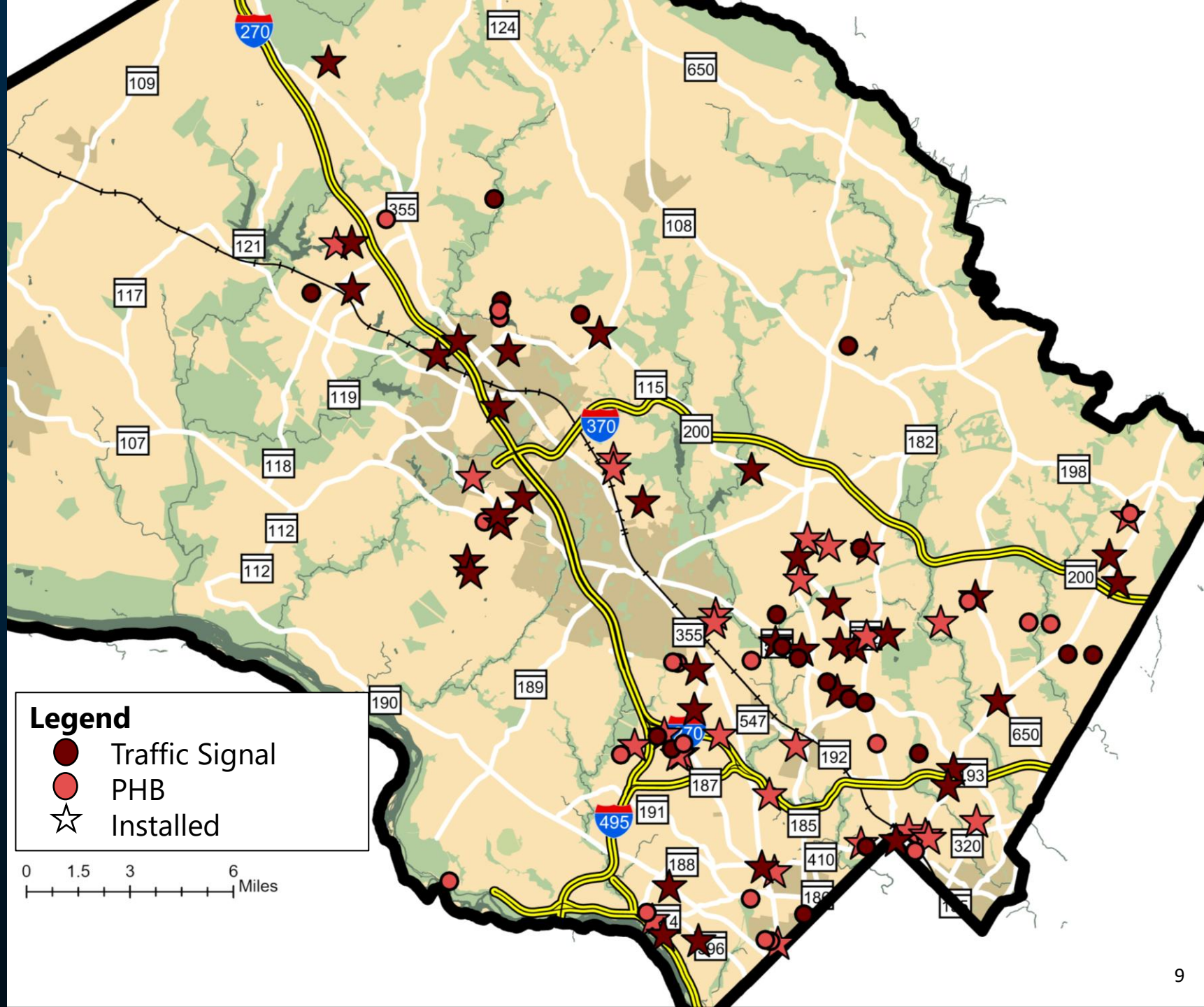
- [Montgomery Village Avenue](#) from Midcounty Highway (MD 124) to Wightman Road.
- [New Hampshire Avenue](#) from University Boulevard to Powder Mill Road (by SHA as part of Pedestrian Safety Action Plan)
- [Spencerville Road \(MD 198\)](#) – speed cushions to the west of Old Columbia Pike to address speeding where the road curves.
- [Veirs Mill Road Bicycle & Pedestrian Improvements](#) from Robindale Drive to Galt Avenue.





Over 64 new installations since Vision Zero started.

## NEW SIGNAL AND BEACON INSTALLATIONS





# Purple Line and Bikeway Projects

## Building connections in East County

### Purple Line Construction as of 7/31/25

- Overall, 82% complete with service starting winter 2027.
- Utility relocations 97% complete.

### Bikeways and Shared Use Path Connections

- Capital Crescent Trail 63% complete and opens spring 2026 while Purple Line is undergoing testing.
- Metropolitan Branch Trail Phase 2a under construction with final paving underway.
- Flower Ave Separated Bike Lanes advancing from 65% design.
- Carroll Ave Separated Bike Lanes at 65% design.
- Piney Branch Road Separated Bike Lanes passed 30% design and advancing.



Image by [Purple Line](#).



# Bus Rapid Transit and Bikeway Projects

**Building new transitways and better pedestrian/ bicycle connections.**

## **Dedicated Bus Lanes**

- University Boulevard – March 2024.
- Georgia Ave – pilot from June to December 2024.  
Lanes made permanent and operational during AM/PM rush hours.
- Shady Grove / Darnestown – September 2024.

## **Design of Bus Rapid Transit**

- Veirs Mill Road BRT and BiPPA – design finalized and now moving utilities and acquiring property.
- MD 355 Central – final design in 2026-2027 with construction 2028-2031.
- US29 Flash Phase 2 – completing 35% design.





# Walkability Studies

## Systematic Review of Walking Area

- 10 – 20 walkability studies completed each fiscal year. 15 are [planned for FY26](#).
- Through end of FY25, 58% of MCPS schools with walksheds and outside municipalities have a completed study. 100% of schools in Equity Emphasis Areas (EEAs) complete.
- Examine the designated walking area for sidewalks, curb ramps, crashes, conflicts at intersection, etc.
- Studies include intensive review of the existing infrastructure plus on-site review of operations during school arrival and dismissal.
- Coordination with school staff and crossing guards.
- Improvement recommendations developed for short-, medium-, and long-term.



# FY26 Walkability Studies

**10 Elementary, 3 Middle, and 2 High.**

## **Elementary Schools**

- Ashburton
- Bells Mill
- Cold Spring
- Dr. Charles R. Drew
- Flower Hill
- Glenallen
- Ronald McNair
- William B. Gibbs, Jr.
- William T. Page
- Wilson Wims

## **Middle Schools**

- Francis Scott Key
- Hallie Wells
- Parkland

## **High Schools**

- Walter Johnson
- Winston Churchill





# Completed School Project Examples

## Montgomery Village Ave at Hob Hill way/Apple Ridge Road

Median extension for  
pedestrian safety



## Dennis Avenue at Julep Road

Pedestrian Refuge Island and  
bump outs



## Bushey Drive & Elby Street

Extended curb to slow turning  
vehicles and update  
crosswalks to latest standard



## Astoria Road and Woodson Avenue

Marked all crossings with high-  
visibility crosswalk, full stop  
control





# School Engagement and Education

---



## Walking Wednesdays

Walking Wednesdays are designed to encourage students (and parents) to get to school by walking instead of by car - in conditions where it is safe to do so.



## Bike Rodeos

One-time or multi-day training to educate elementary school students on general bike safety, best practices, and transportation safety through interactive events.



## Guidance

Resources to empower school parents, students, and staff. For example, step-by-step guidance for starting and maintaining walking school bus.



## Youth Ambassadors

Five-month program emerging high school students in Vision Zero and the Safe System Approach with capstone project "Safety Day."

# Automated Enforcement Expansion Plan

## More sites and new technology

### Recent Expansions

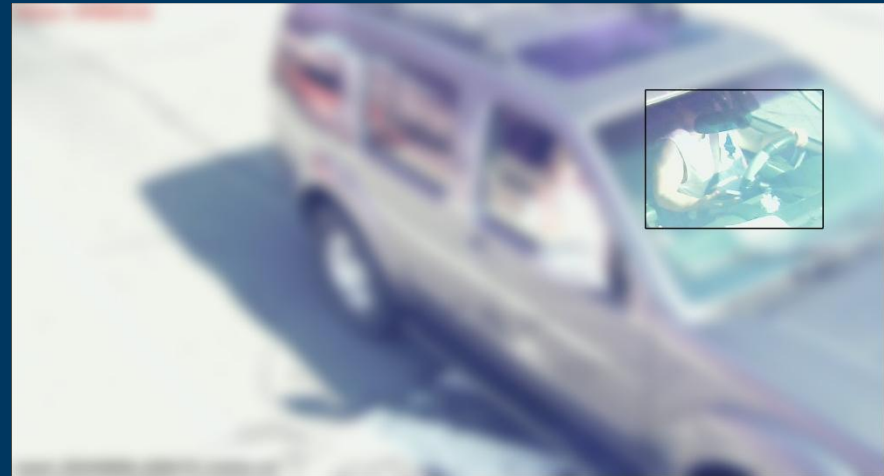
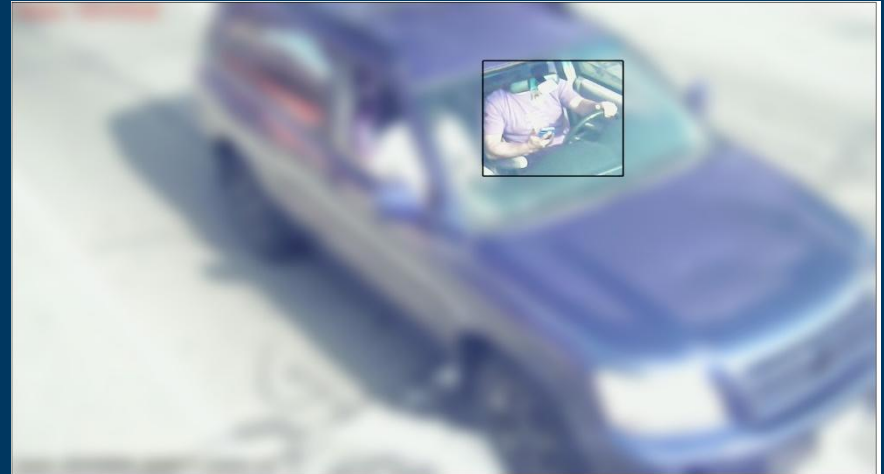
- New vendor coming online to provide 140 speed and 76 red-light cameras.
- Permitted to use bus lane cameras. Pilot started with WMATA.

### New laws active as of October 1, 2025

- Allowing speed cameras on High Injury Network.
- Graduated fine schedule for speed camera violations based on the violator's speed.

### Needing State Law changes

- Using new technology for enforcing seatbelts, mobile phone use, crosswalks, move over law, HOV.



Examples of mobile phone use captured by distracted driving cameras. At pilot sites, 20% of drivers were detected using a mobile phone.





# Education and Outreach Events

---

Recent Events and Upcoming Schedule







# Vision Zero Youth Ambassadors



# BIKE RODEOS AND LEARN TO RIDE CLASSES

---





# Holiday Alcohol Task Force

## Promoting Safe Rides Home

- Task force from November 26 – January 11. Made 393 traffic stops with 40 driving under the influence arrests in first two weeks.
- Outreach to bars and restaurants with safety messages.
- Promote [Safe Ride Home page](#) to provide one stop shop for finding sober ride options in Montgomery County.







# Crash Data

---

Data and dashboard  
resources



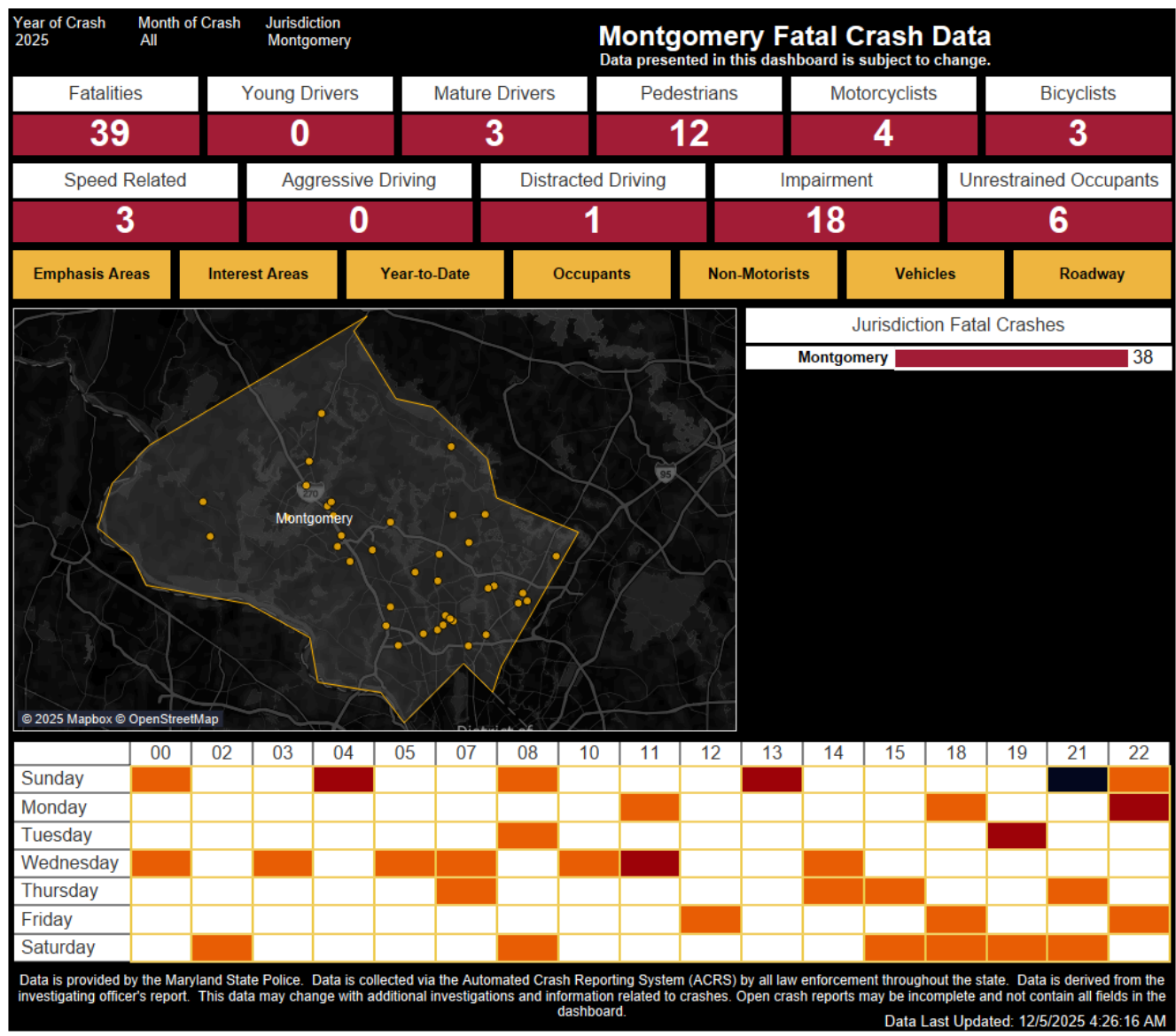
# Finding latest crash and fatality data

## County and State Resources

Highway Safety Office Fatal Crash Dashboard. Fatal crashes typically added within 24-48 hours.

County Monthly Crash Summary. Updated middle of each month for crashes through the prior month.

Crash open data. Raw version of crash data updated weekly.







**THANK YOU!**

Wade Holland, Vision Zero Coordinator

[Wade.Holland@MontgomeryCountyMD.gov](mailto:Wade.Holland@MontgomeryCountyMD.gov)