

## Executive Blvd and Old Georgetown Rd Construction Detour Effective March 22, 2021

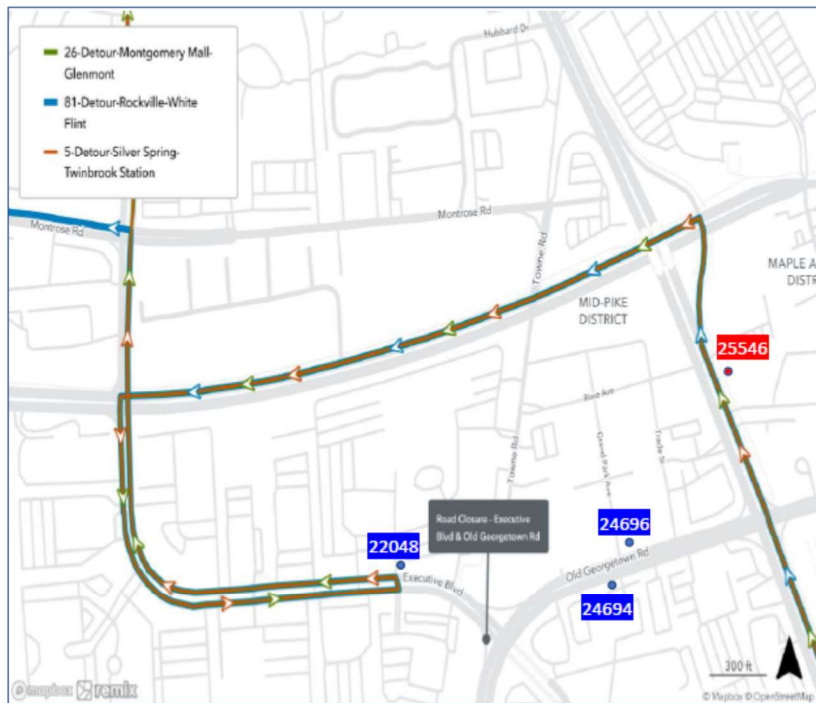
Because of construction, Ride On routes 5, 26 and 81 will detour for several months. See maps below for new routing. Also see the chart below to see what bus stop you can use instead of the stop that will be taken out of service.

Other details to note:

- Make sure you are boarding your bus for the correct direction as buses for both directions may be serving the same stop.
- Ride On Real Time will not reflect the status of these buses until they go back on their regular route so times may be inaccurate.

### Executive Blvd Connector Detour Routes: 5, 26, 81

Westbound



Eastbound



Bus Stop ID Deactivated

Bus Stop Alternatives

If Your Route Is	Going Toward	And Your Stop is	And the Stop ID is	Your Alternative Stop on Executive Blvd will be	Or Your Alternative Stop on Rockville Pike Will Be	
5	Twinbrook	Executive & Old Georgetown	22048	22050 – Twinbrook or Silver Spring	25606 – Silver Spring	25546 - Twinbrook
26	Glenmont	Executive & Old Georgetown	22048	22050 – Mont Mall or Glenmont	25606 – Mont Mall	25546 - Glenmont
81	Rockville	Executive & Old Georgetown	22048	22050 – Rockville or White Flint	25606 – White Flint	25546 - Rockville
5, 26, 81	Twinbrook, Glenmont or Rockville	Old Georgetown & Grand Park	24696	-		25546 – Twinbrook, Glenmont or Rockville
5, 26, 81	Silver Spring, Mont Mall or White Flint	Old Georgetown & Grand Park	24694	-	25606 – Silver Spring, Mont Mall or White Flint	